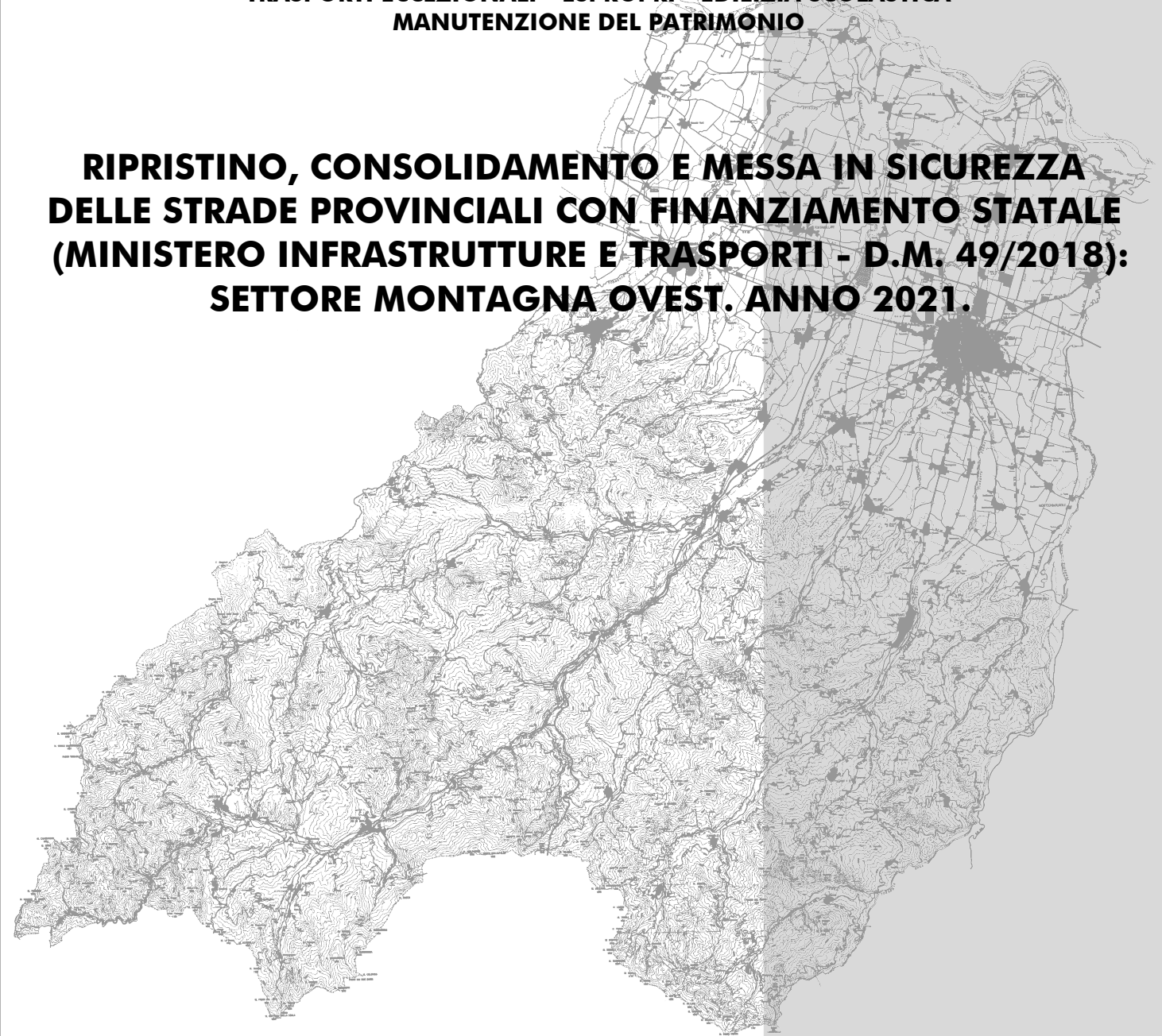


**PROVINCIA DI PARMA**  
**SERVIZIO VIABILITA' E INFRASTRUTTURE**  
**- TRASPORTI ECCEZIONALI - ESPROPRI - EDILIZIA SCOLASTICA -**  
**MANUTENZIONE DEL PATRIMONIO**

**RIPRISTINO, CONSOLIDAMENTO E MESSA IN SICUREZZA  
DELLE STRADE PROVINCIALI CON FINANZIAMENTO STATALE  
(MINISTERO INFRASTRUTTURE E TRASPORTI - D.M. 49/2018):  
SETTORE MONTAGNA OVEST. ANNO 2021.**



**PROGETTO DEFINITIVO-ESECUTIVO**

DESCRIZIONE	ELABORATO
<b>PLANIMETRIE: TRATTI DI INTERVENTO</b>	<b>7</b>

SCALA	DATA
-	<b>GENNAIO 2021</b>

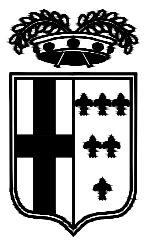
Il Responsabile del Servizio  
Ing. Gianpaolo Monteverdi

Il Responsabile del Procedimento  
Arch. Gloria Resteghini

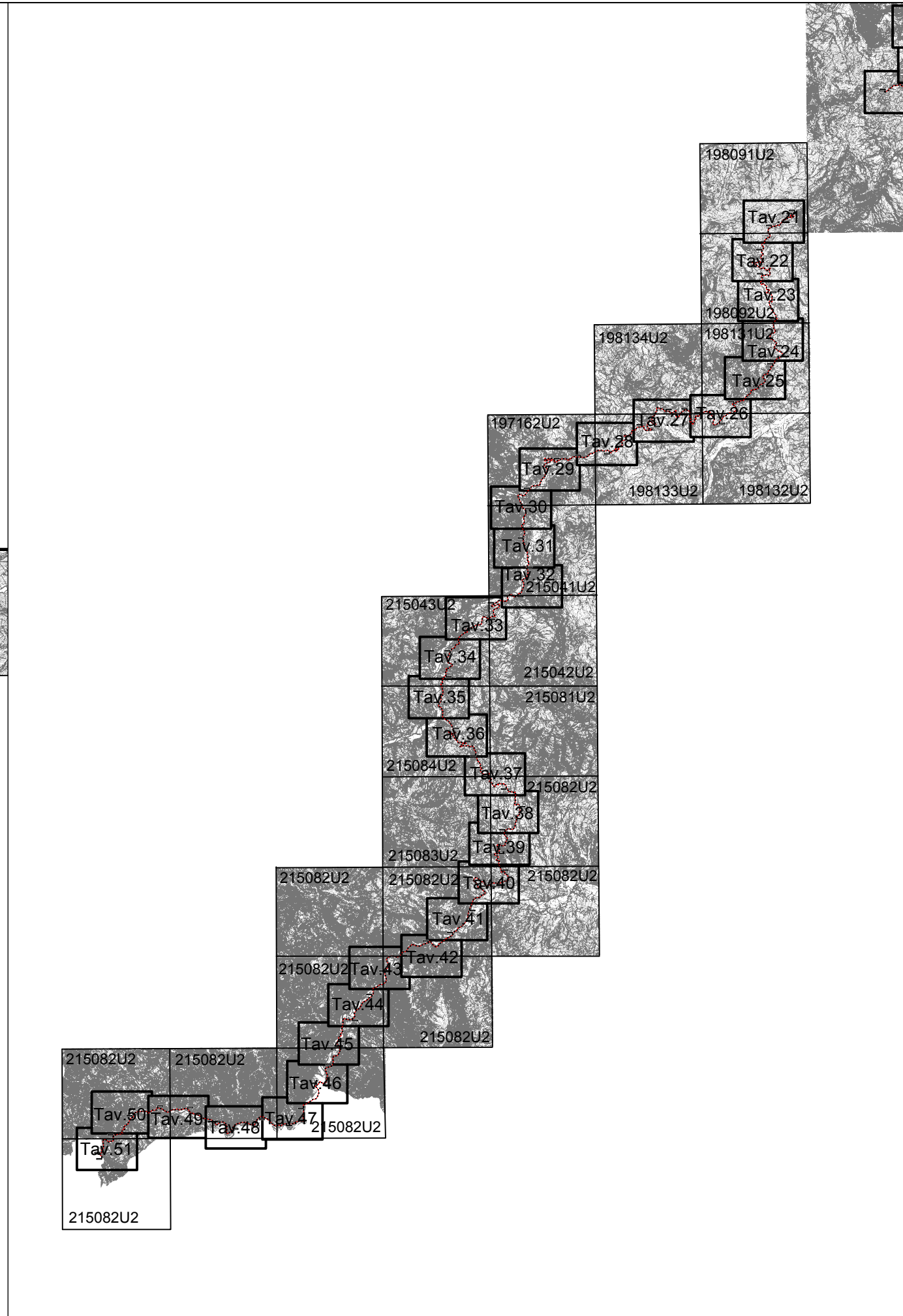
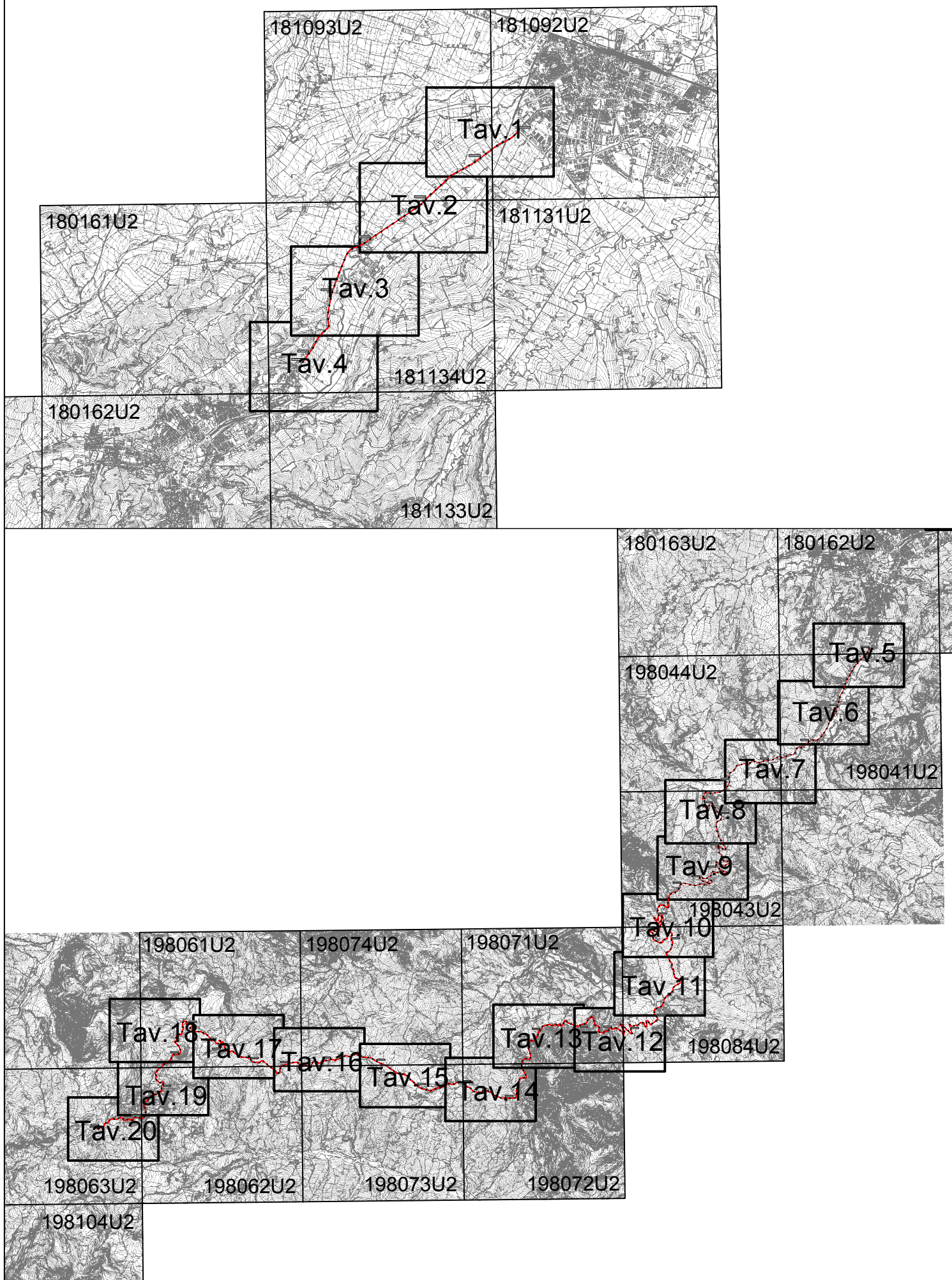
Il Progettista  
Geom. Antonio Mesti

Il Coordinatore  
Geom. Antonio Mesti





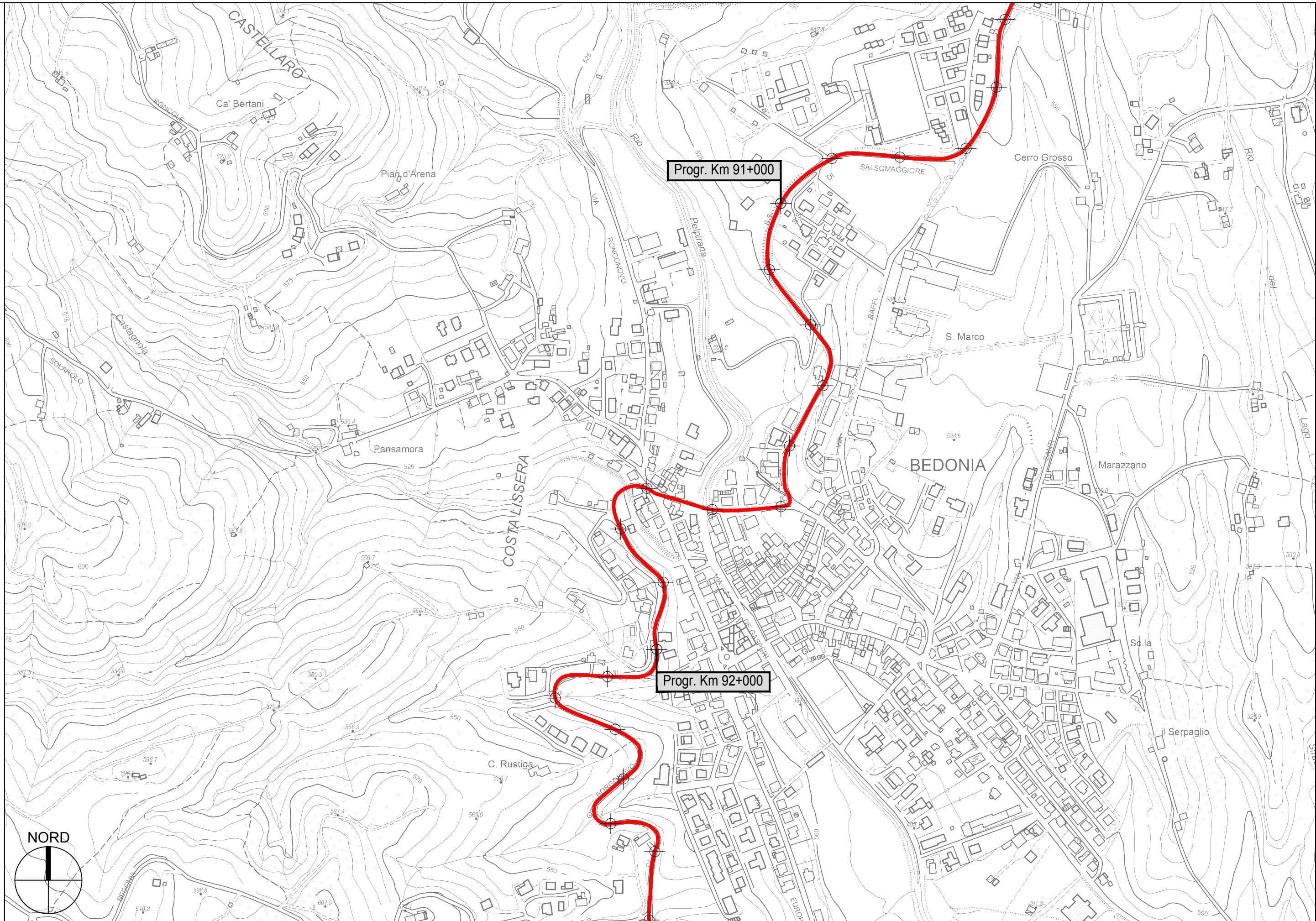
PROVINCIA DI PARMA - Servizio Viabilità e Infrastrutture



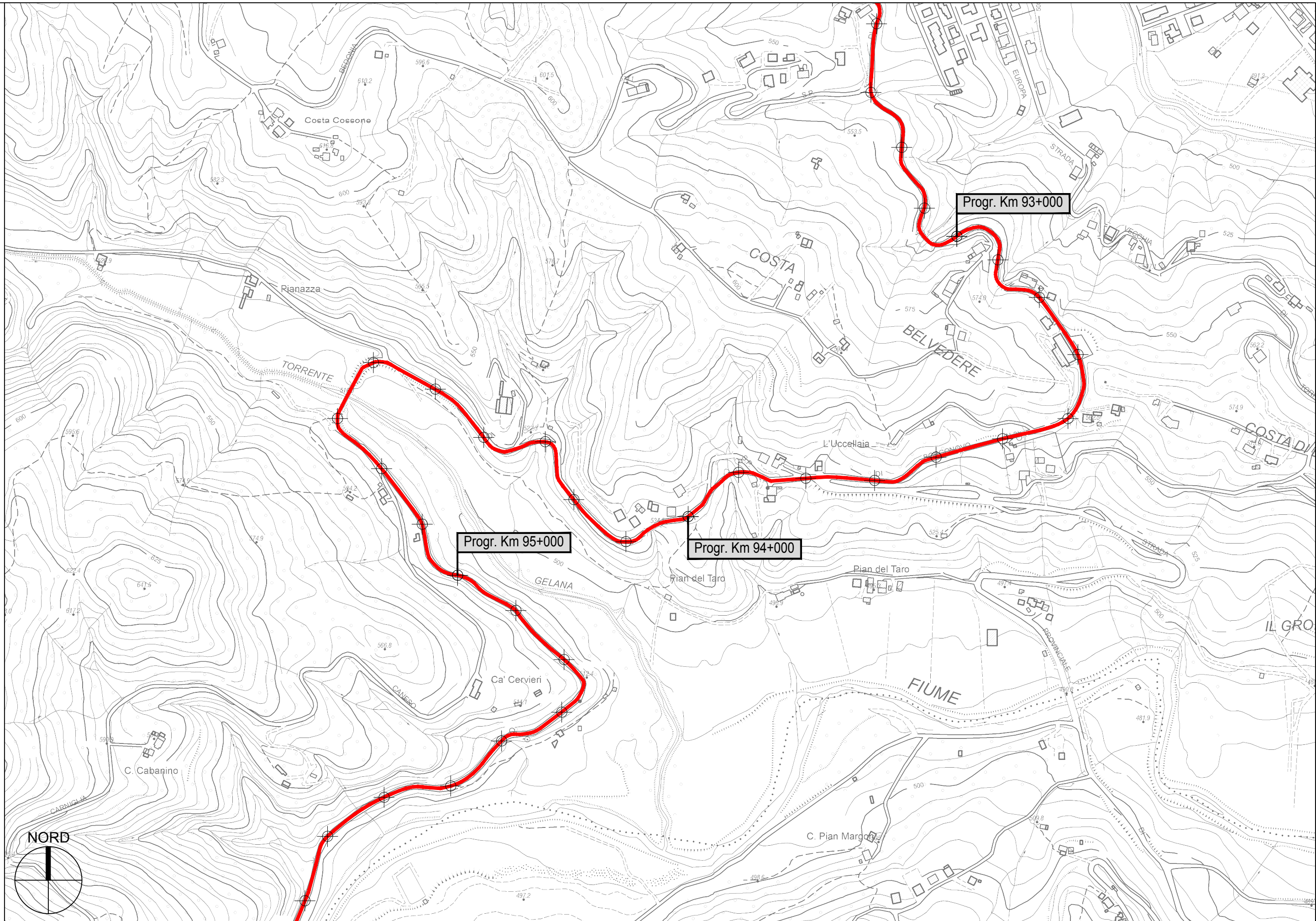
S.P. 359R di Salsomaggiore e Bardi - Sviluppo chilometrico 101+508 km

Inquadramento - Scala Adattata

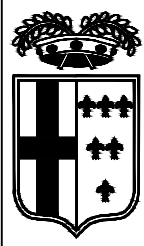




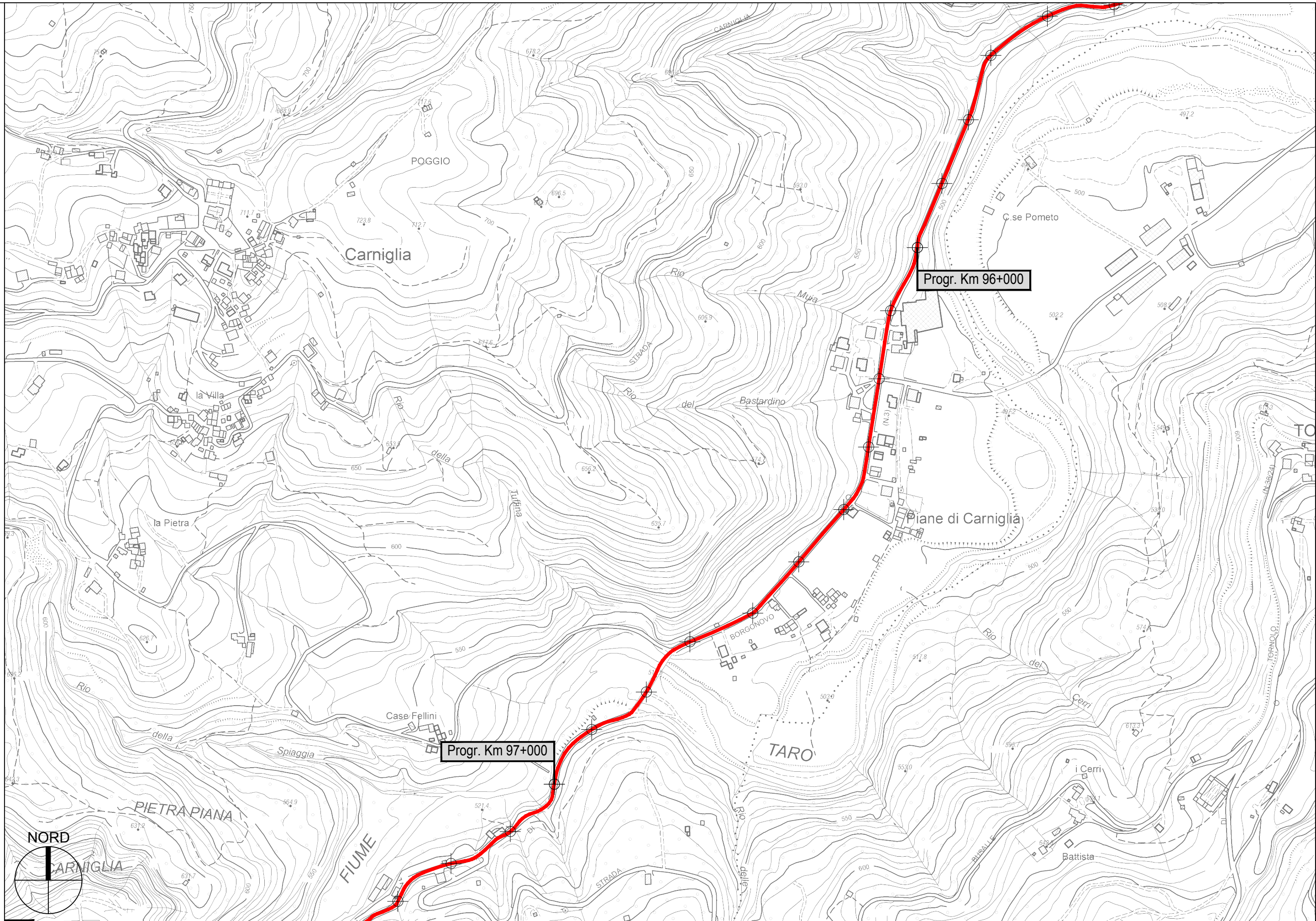








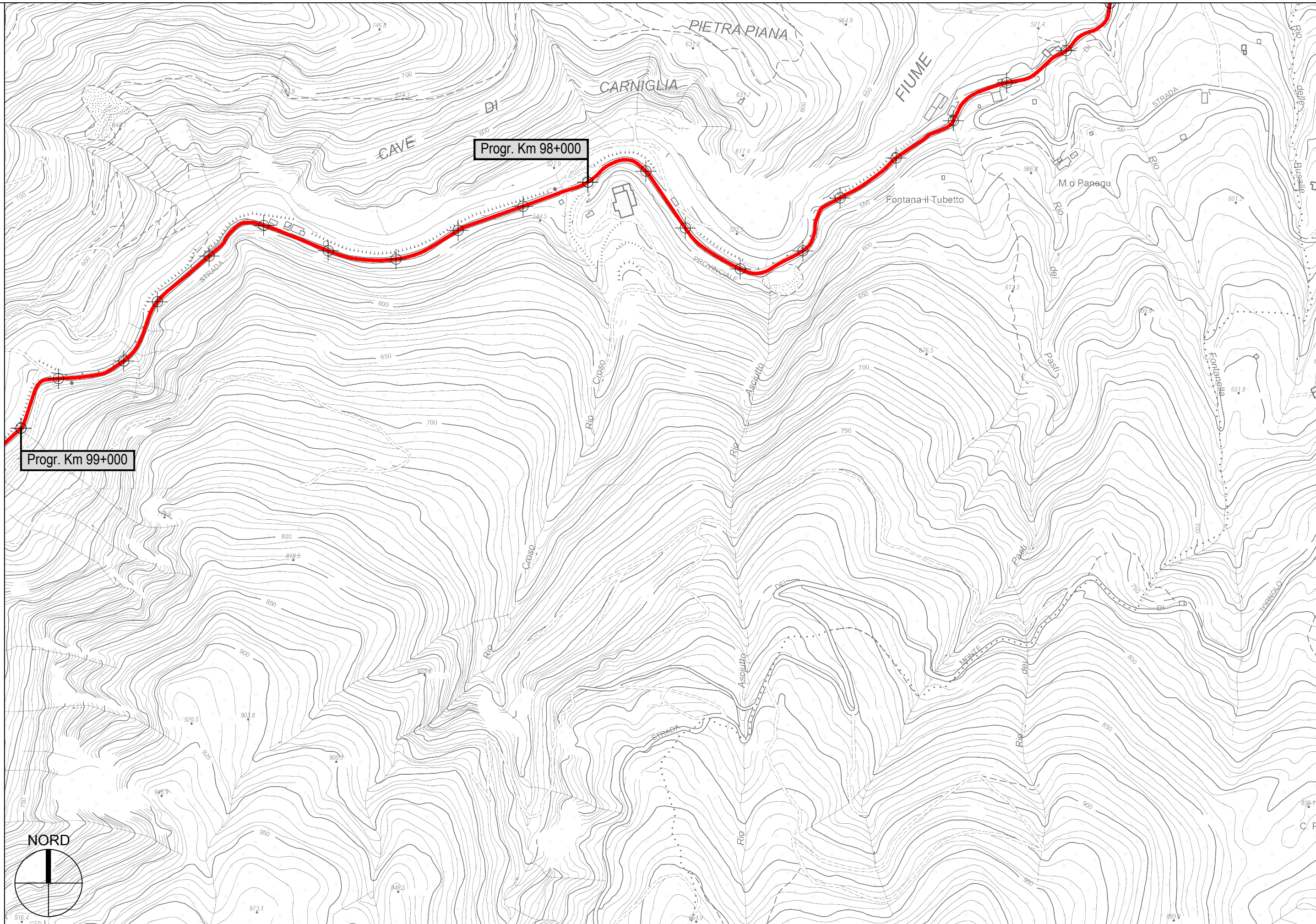
PROVINCIA DI PARMA - Servizio Viabilità e Infrastrutture



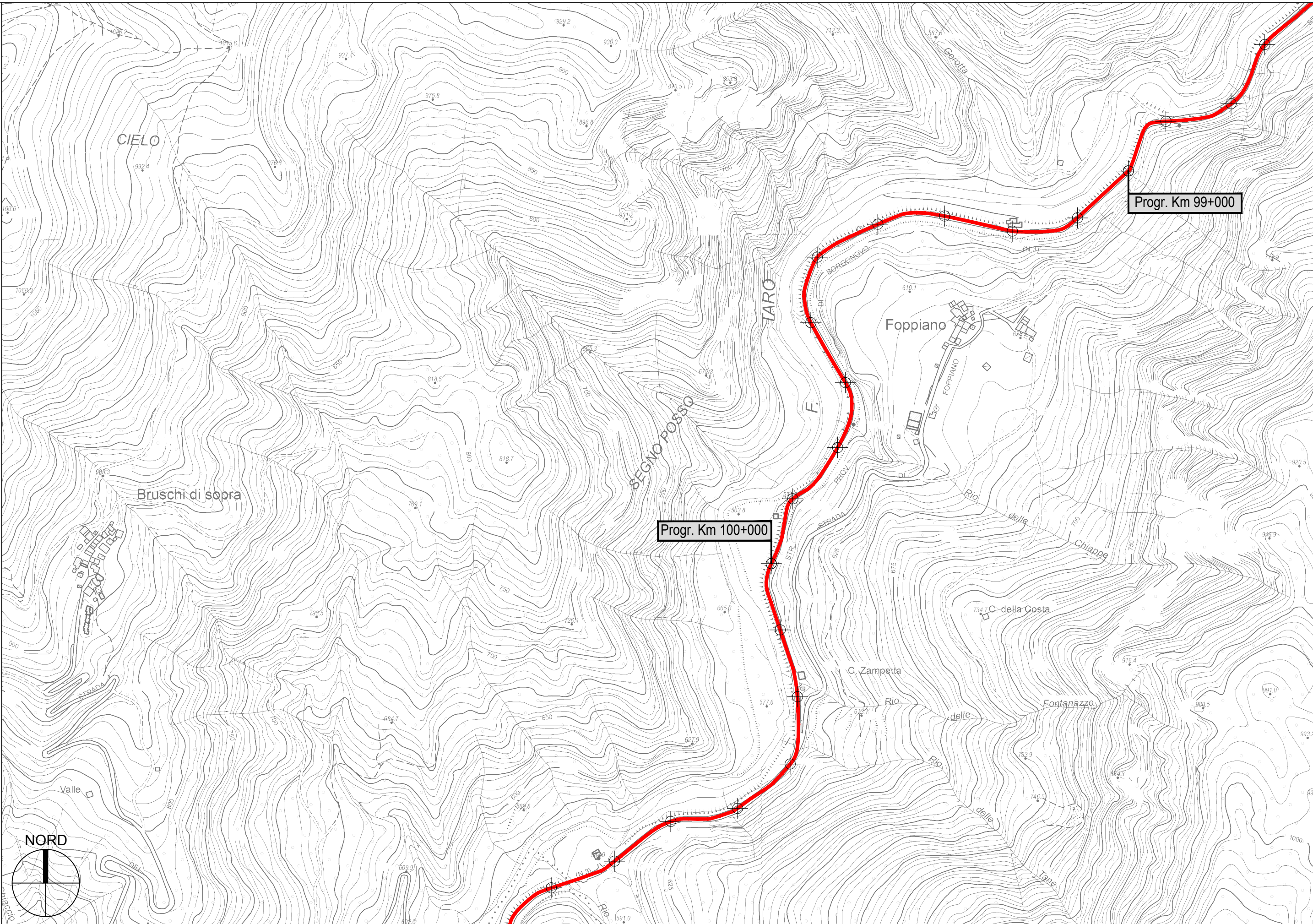
S.P. 359R di Salsomaggiore e Bardi - Sviluppo chilometrico 101+508 km

Tavola 41 di 51 - Scala 1 : 5.000

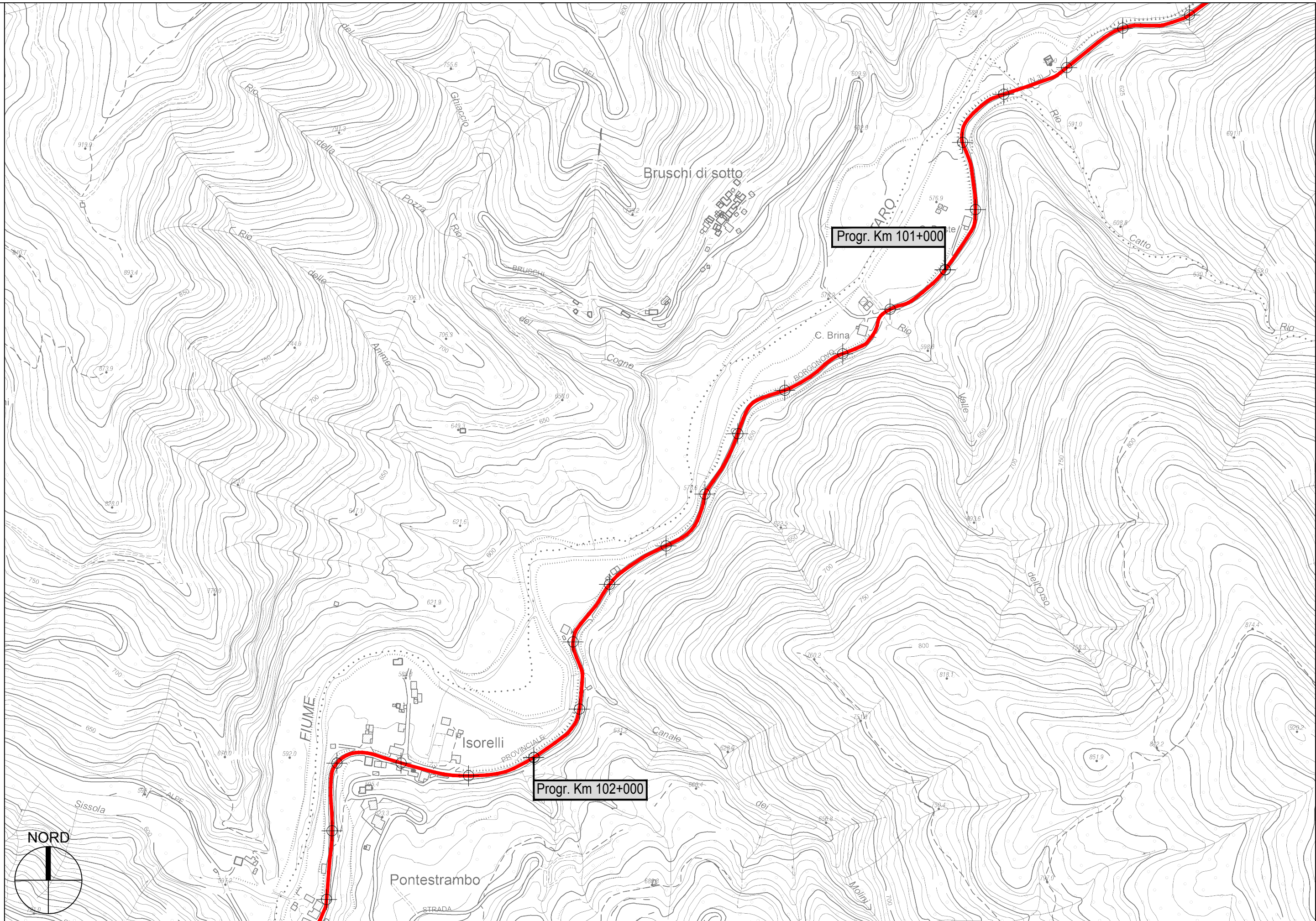




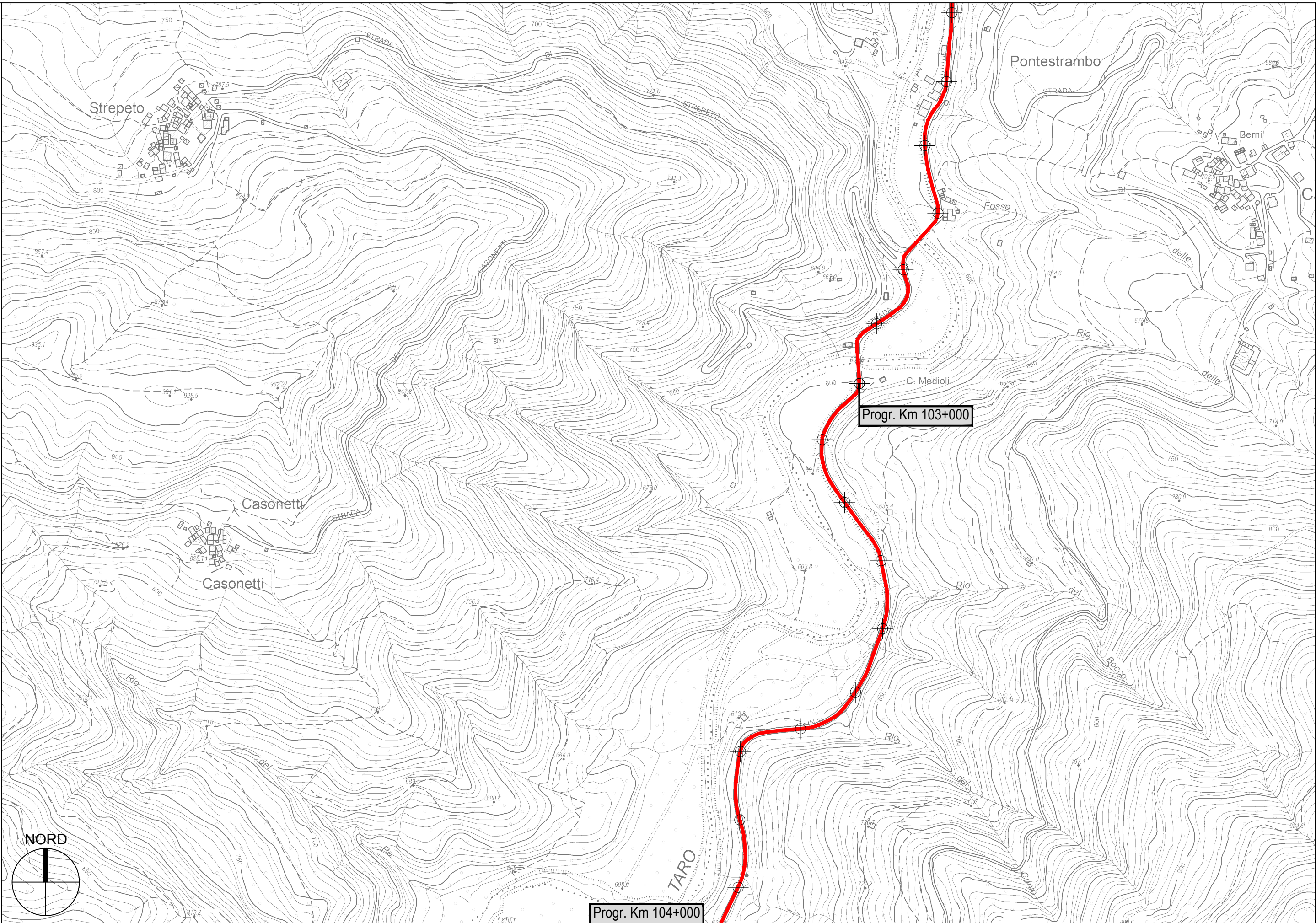












Progr. Km 103+000

Progr. Km 104+000



