

PROVINCIA DI PARMA
SERVIZIO VIABILITA' E INFRASTRUTTURE
- TRASPORTI ECCEZIONALI - ESPROPRI - EDILIZIA SCOLASTICA -
MANUTENZIONE DEL PATRIMONIO

**RIPRISTINO, CONSOLIDAMENTO E MESSA IN SICUREZZA
DELLE STRADE PROVINCIALI CON FINANZIAMENTO STATALE
(MINISTERO INFRASTRUTTURE E TRASPORTI - D.M. 49/2018):
SETTORE MONTAGNA EST. ANNO 2021.**



PROGETTO DEFINITIVO-ESECUTIVO

DESCRIZIONE	ELABORATO
PLANIMETRIE: TRATTI DI INTERVENTO	7

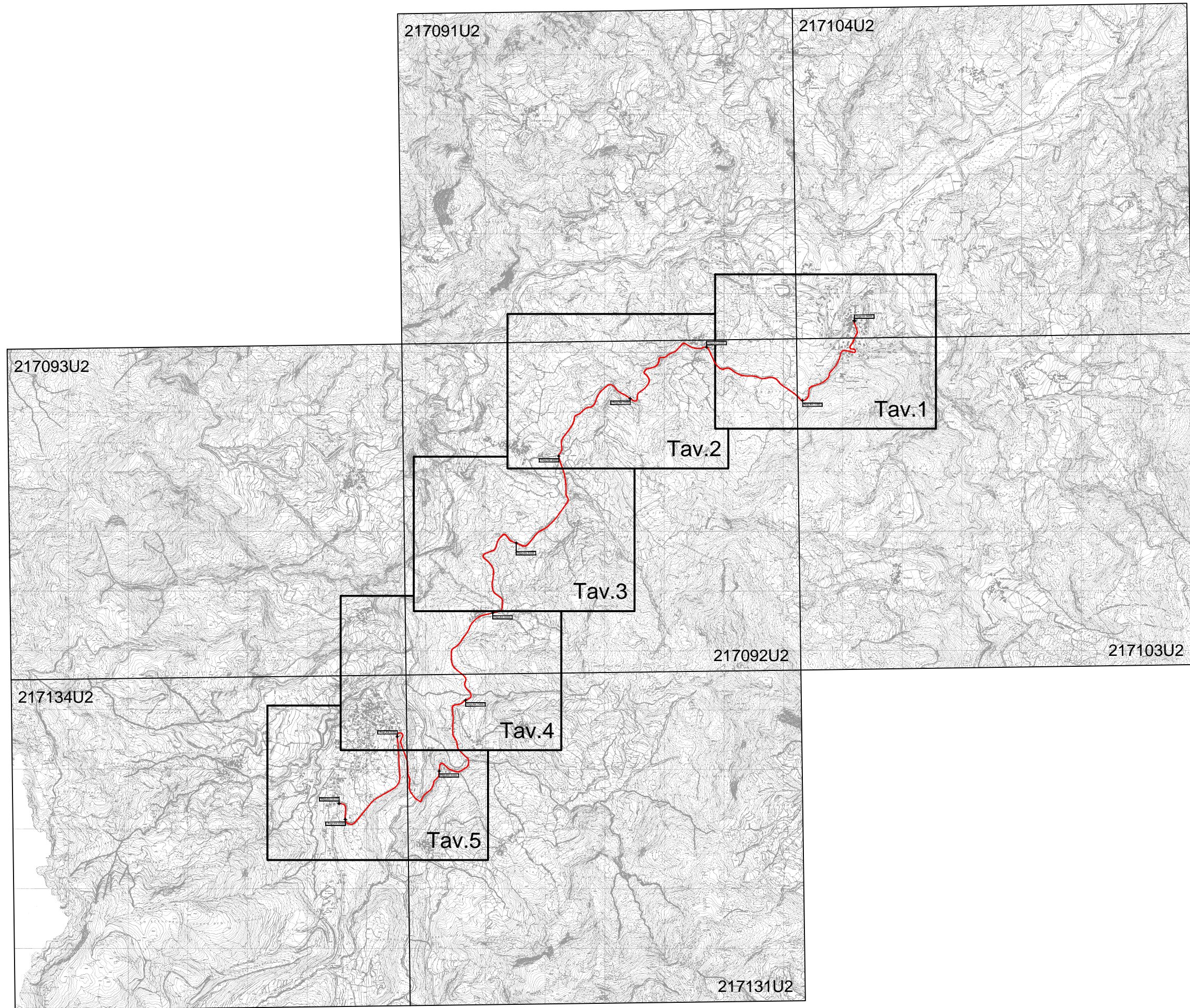
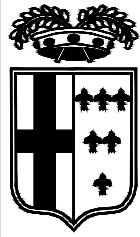
SCALA	DATA
-	GENNAIO 2021

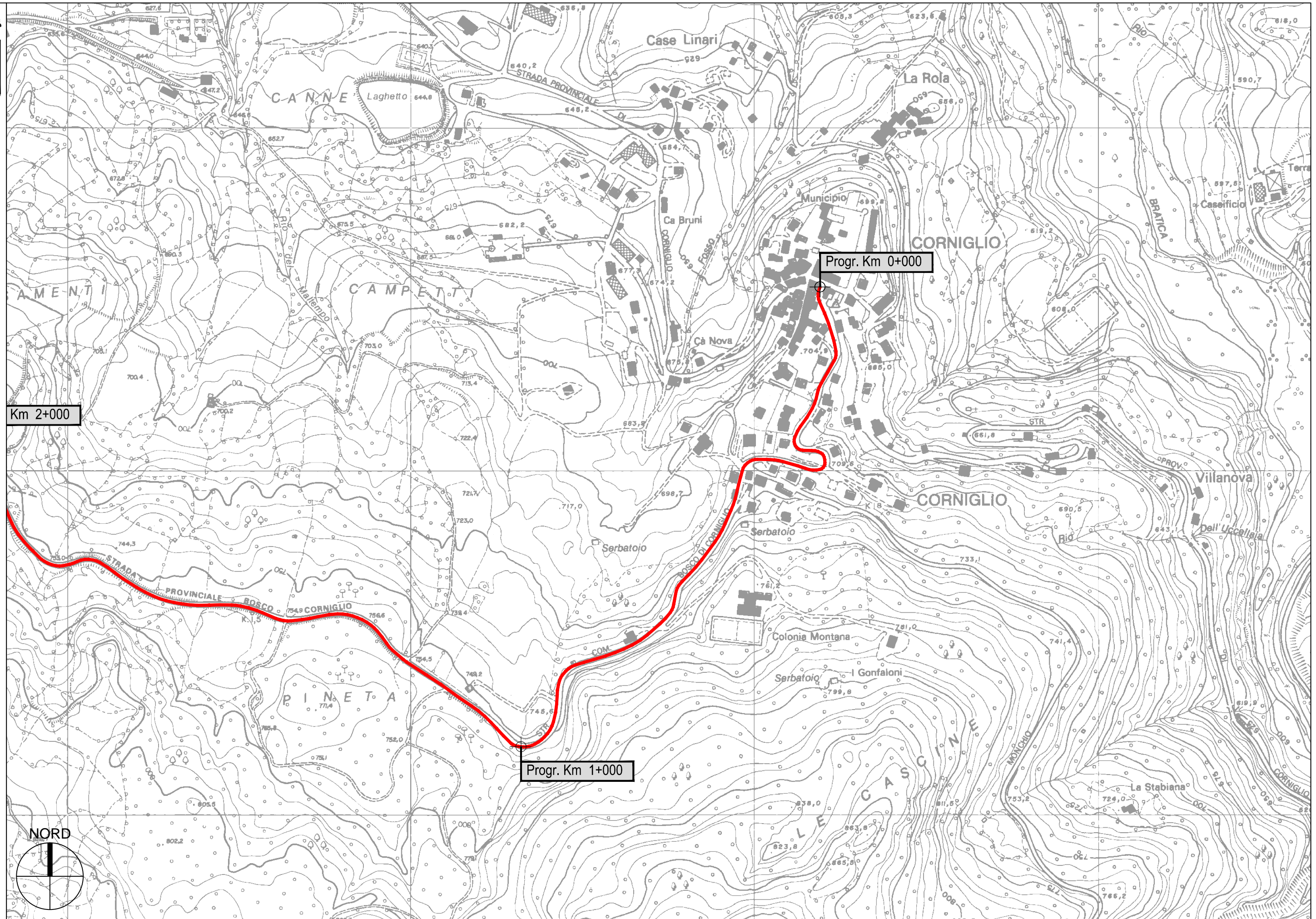
Il Responsabile del Servizio
Ing. Gianpaolo Monteverdi

Il Responsabile del Procedimento
Arch. Gloria Resteghini

Il Progettista
Geom. Antonio Mesti

Il Coordinatore
Geom. Antonio Mesti



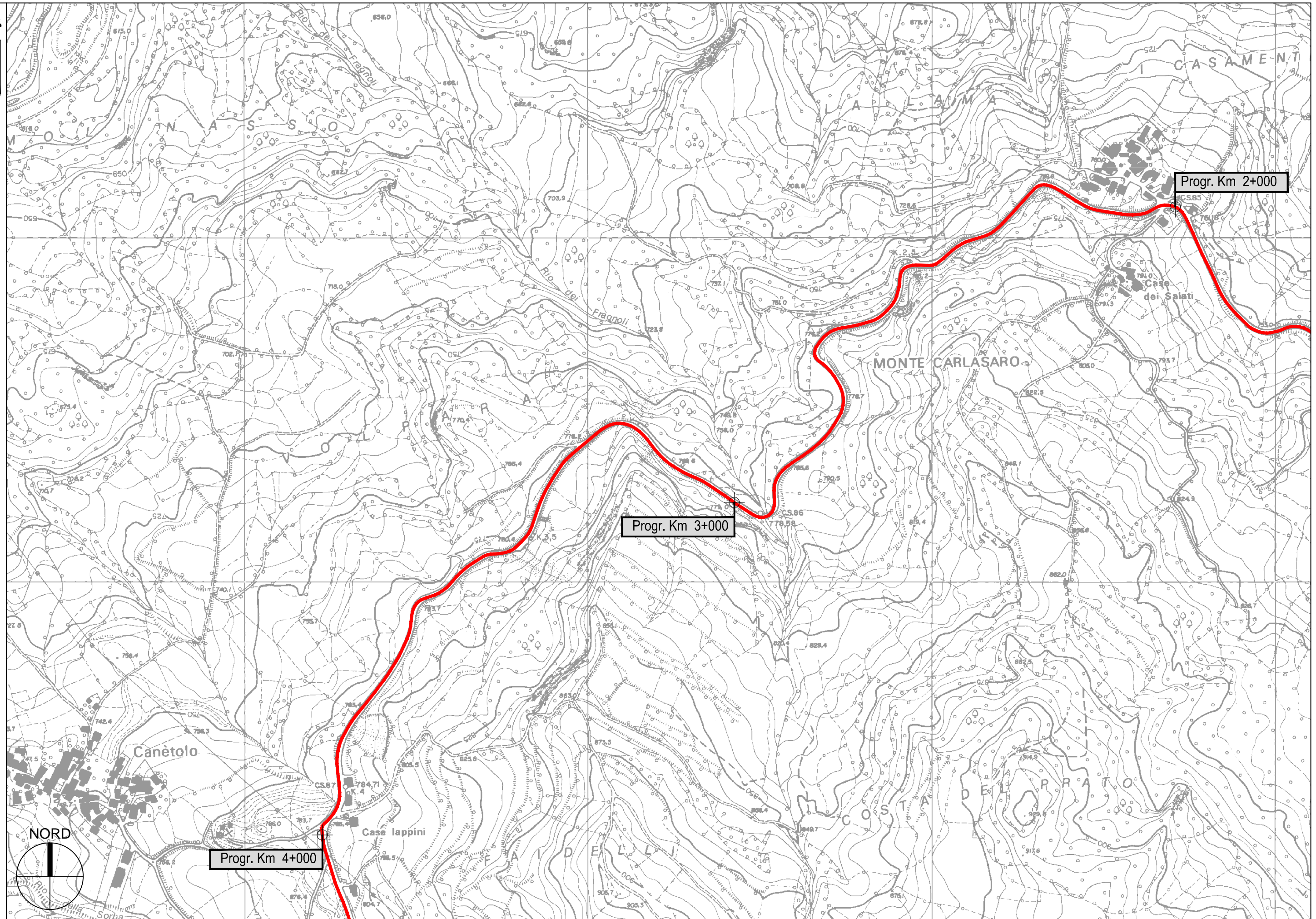


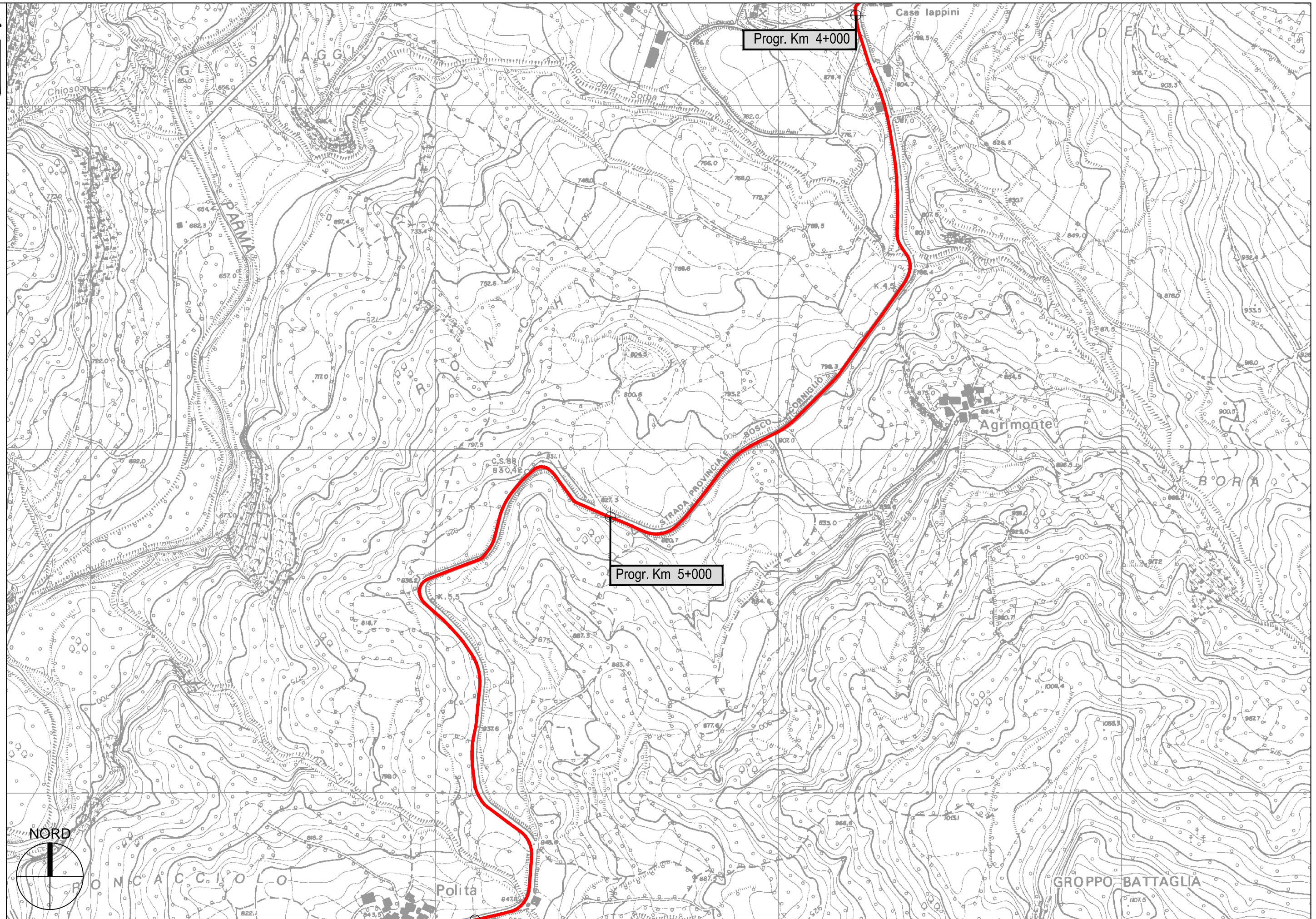
Km 2+000

Progr. Km 0+000

Progr. Km 1+000





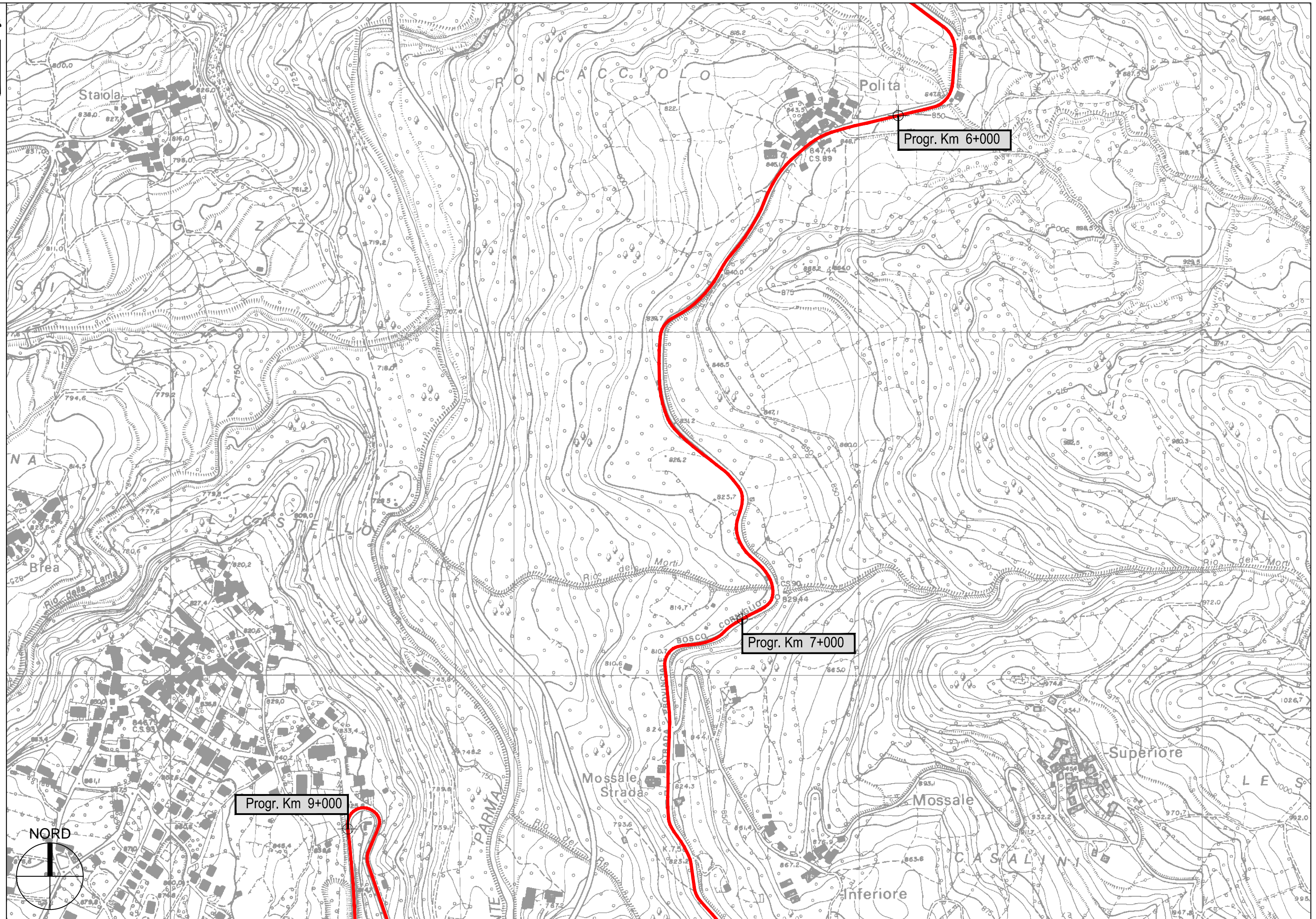


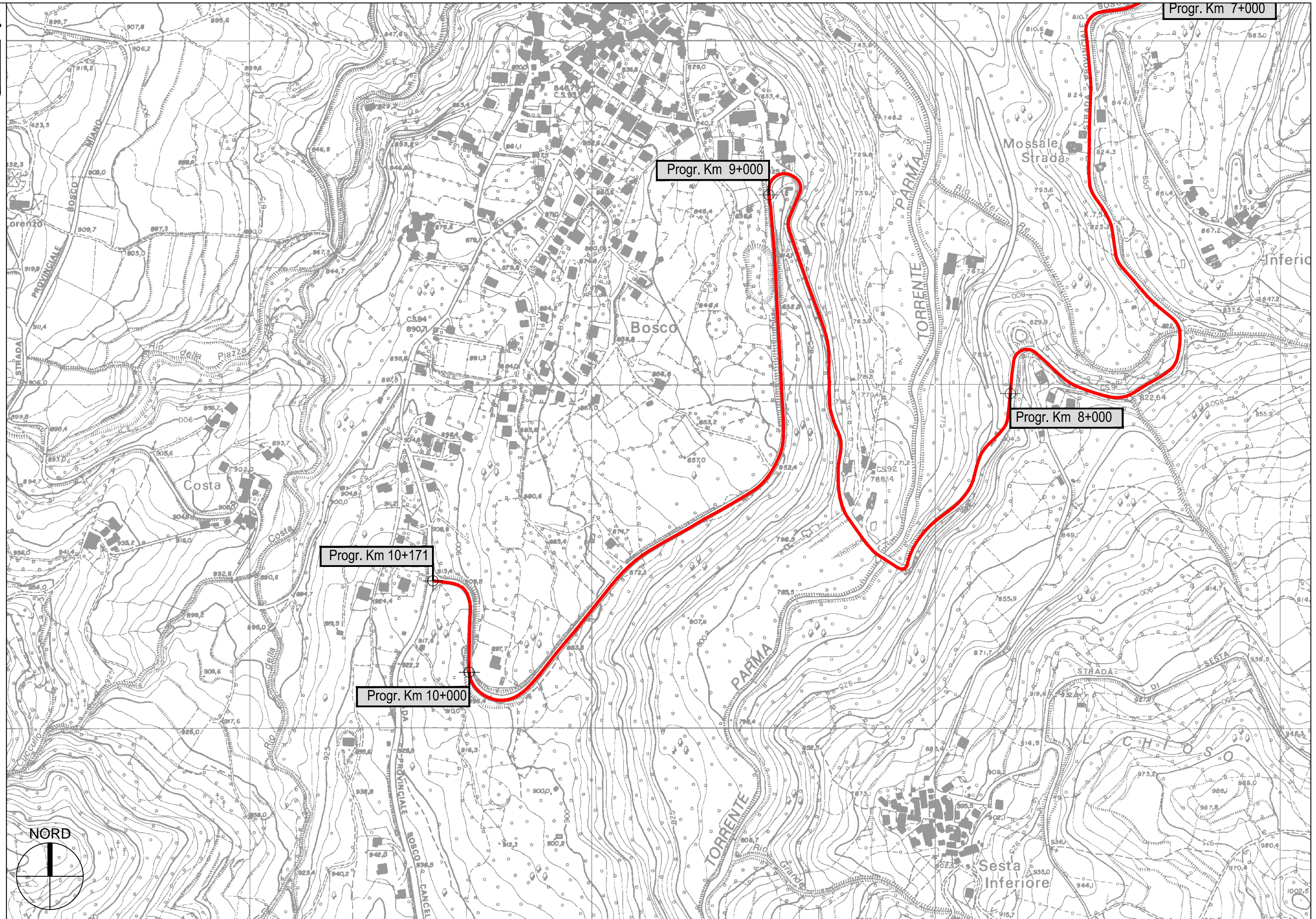
Progr. Km 4+000

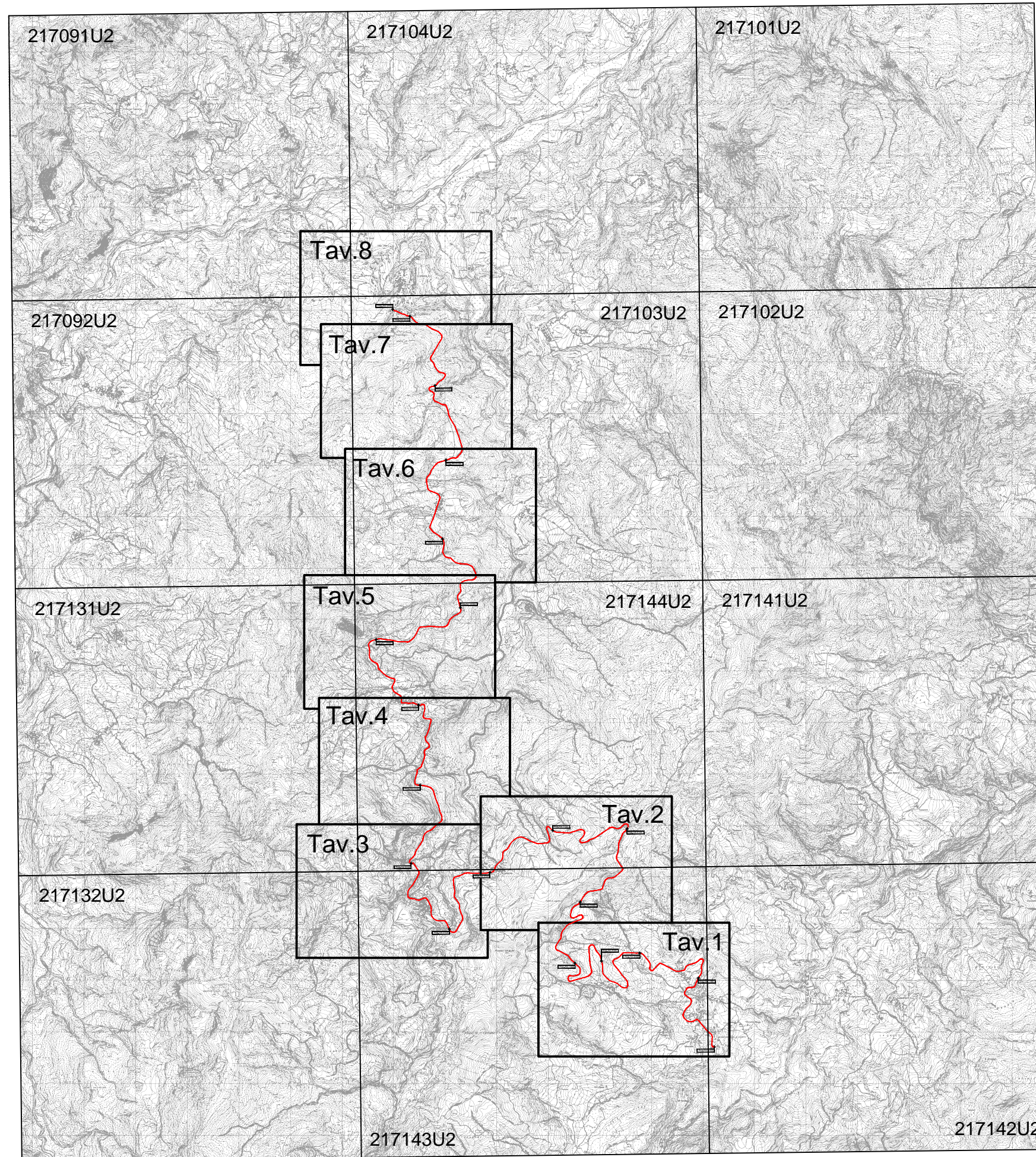
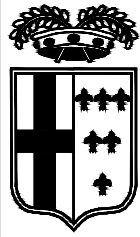
Progr. Km 5+000

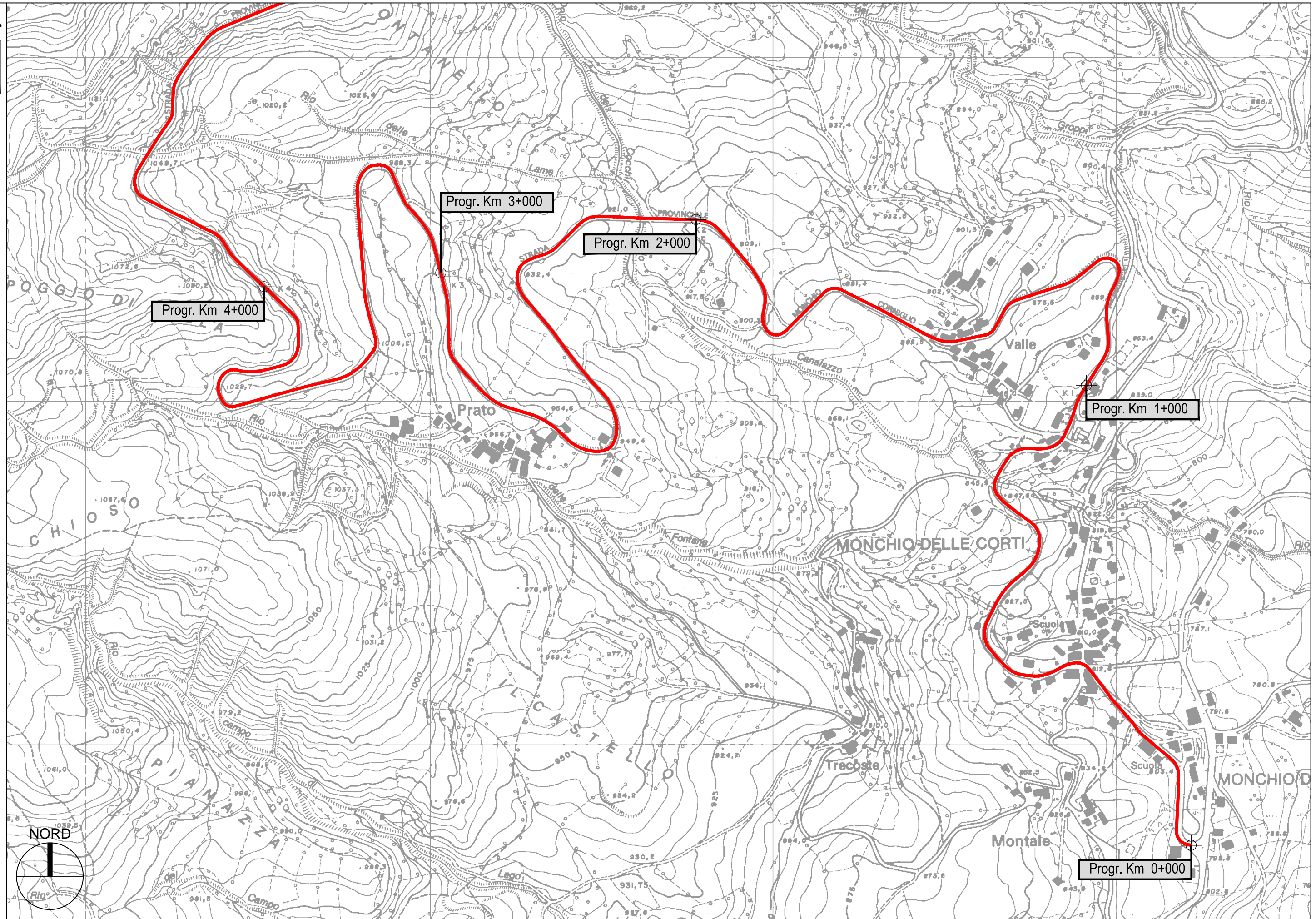
NORD











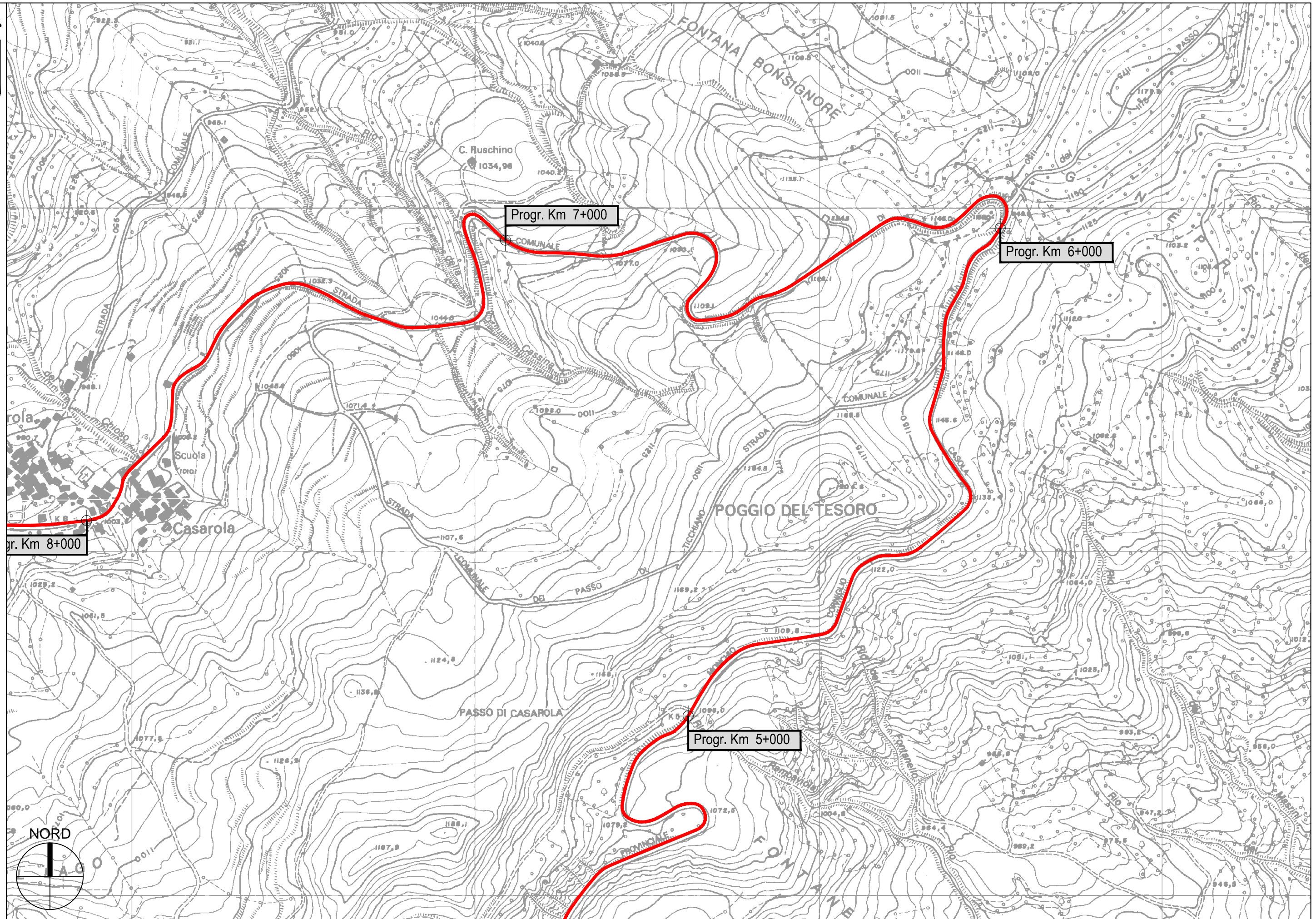
Progr. Km 4+000

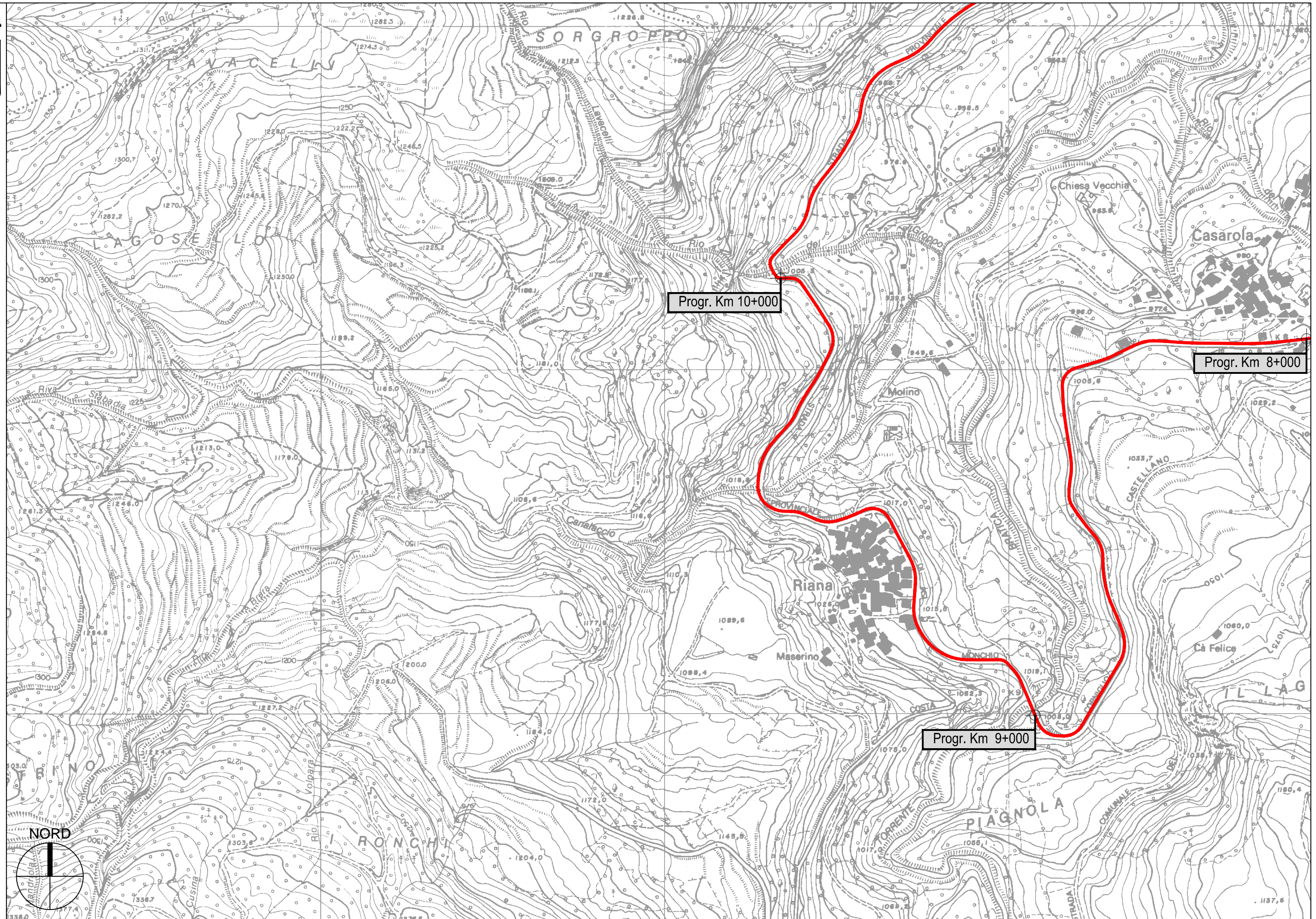
Progr. Km 3+000

Progr. Km 2+000

Progr. Km 1+000

Progr. Km 0+000





Progr. Km 10+000

Progr. Km 8+000

Progr. Km 9+000



