

PROVINCIA DI PARMA
SERVIZIO VIABILITA' E INFRASTRUTTURE
- TRASPORTI ECCEZIONALI - ESPROPRI - EDILIZIA SCOLASTICA -
MANUTENZIONE DEL PATRIMONIO

**RIPRISTINO, CONSOLIDAMENTO E MESSA IN SICUREZZA
DELLE STRADE PROVINCIALI CON FINANZIAMENTO STATALE
(MINISTERO INFRASTRUTTURE E TRASPORTI - D.M. 49/2018):
SETTORE MONTAGNA EST. ANNO 2021.**



PROGETTO DEFINITIVO-ESECUTIVO

DESCRIZIONE	ELABORATO
PLANIMETRIE: TRATTI DI INTERVENTO	7

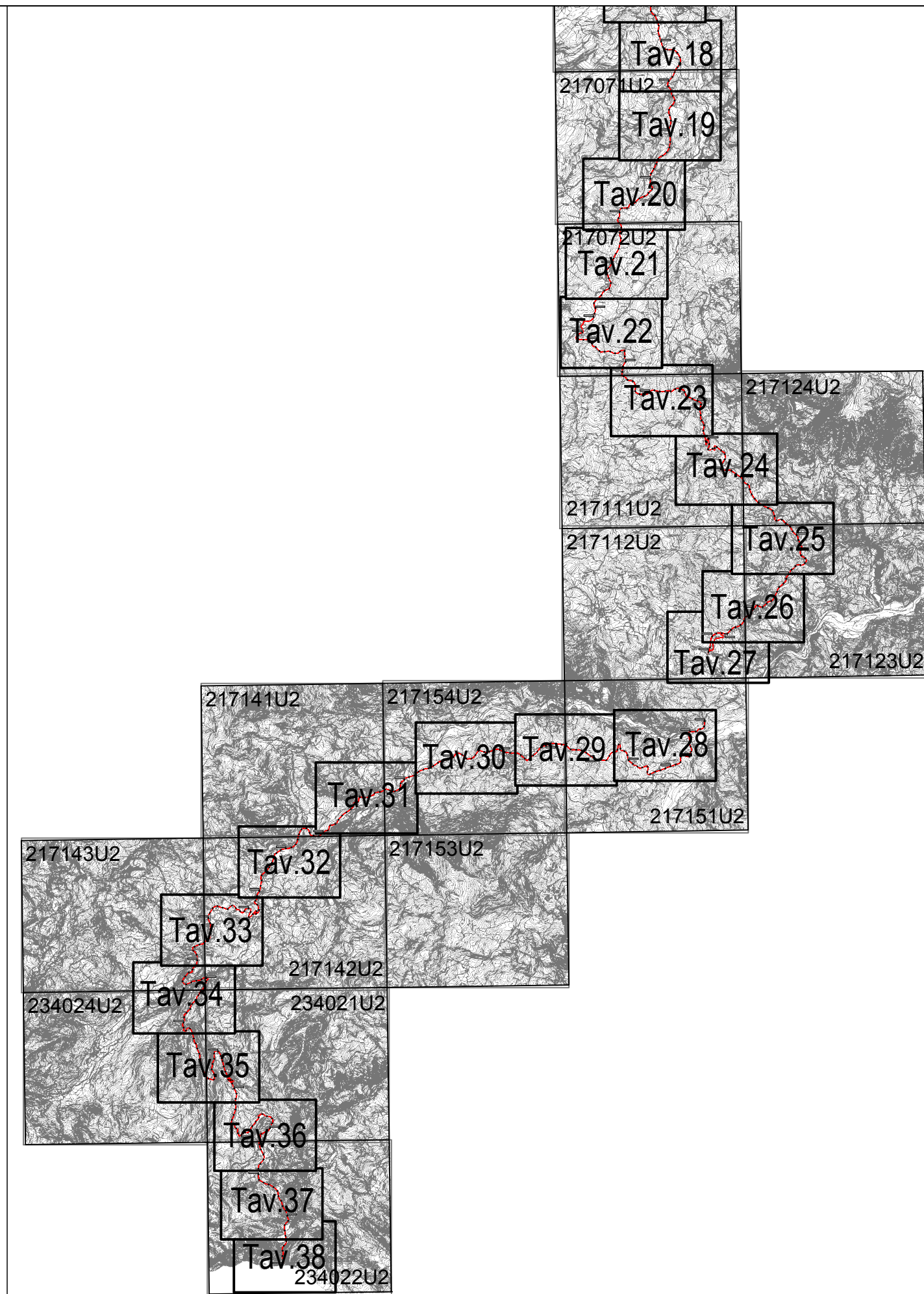
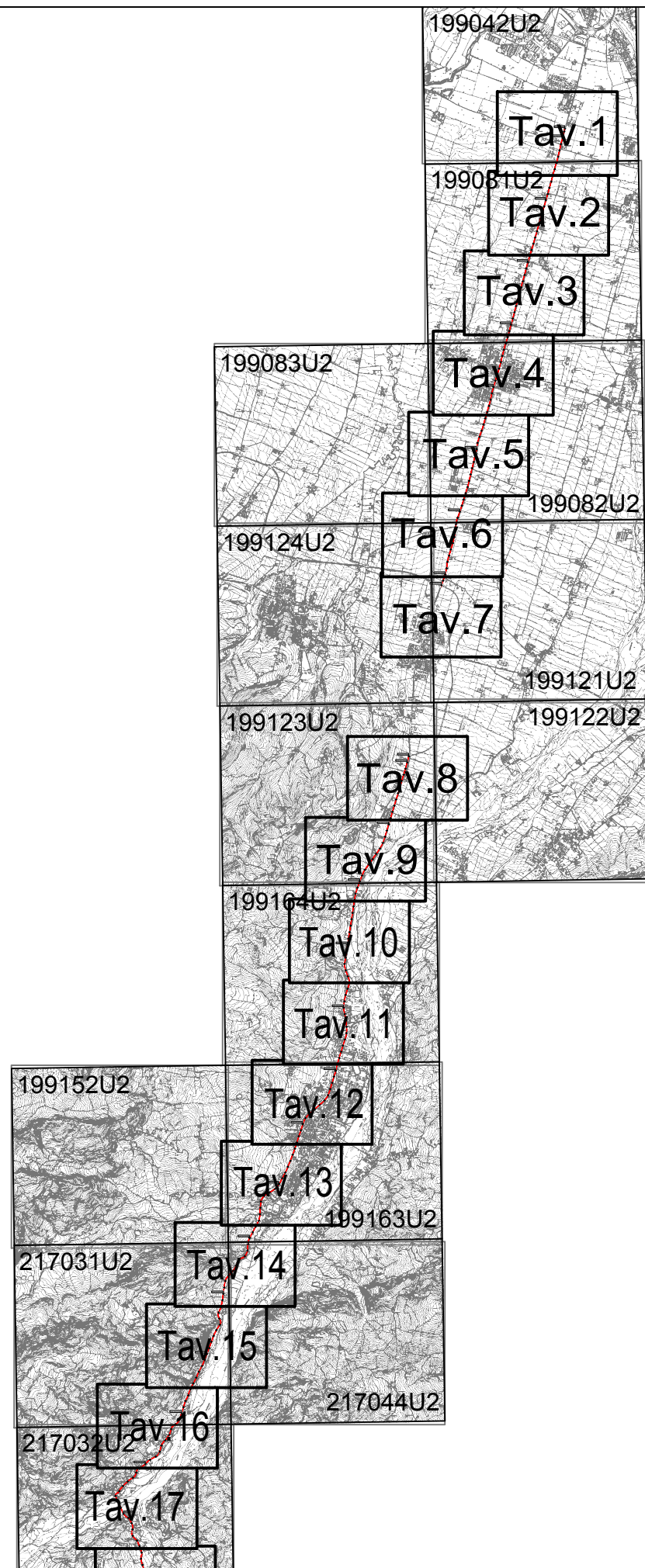
SCALA	DATA
-	GENNAIO 2021

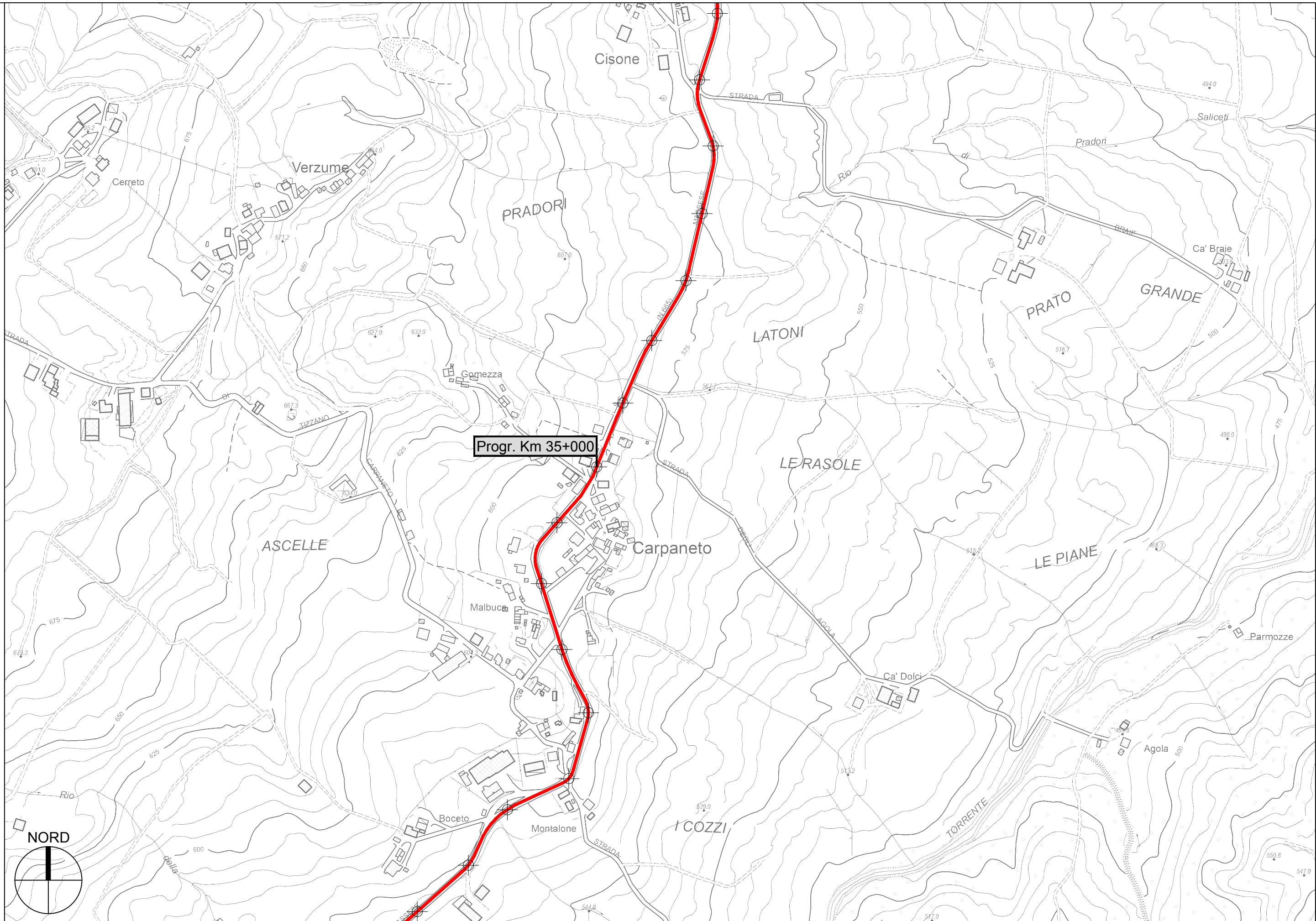
Il Responsabile del Servizio
Ing. Gianpaolo Monteverdi

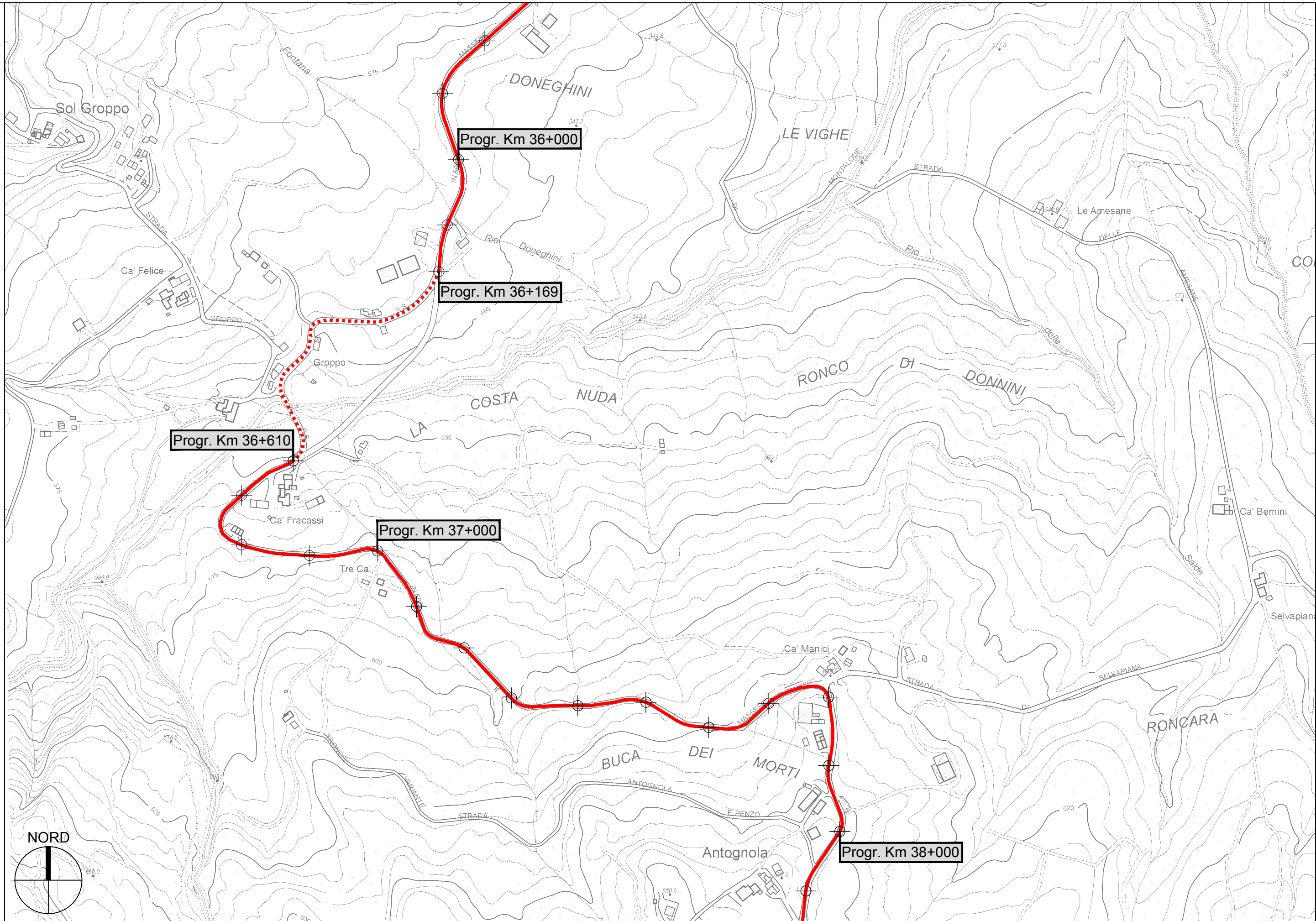
Il Responsabile del Procedimento
Arch. Gloria Resteghini

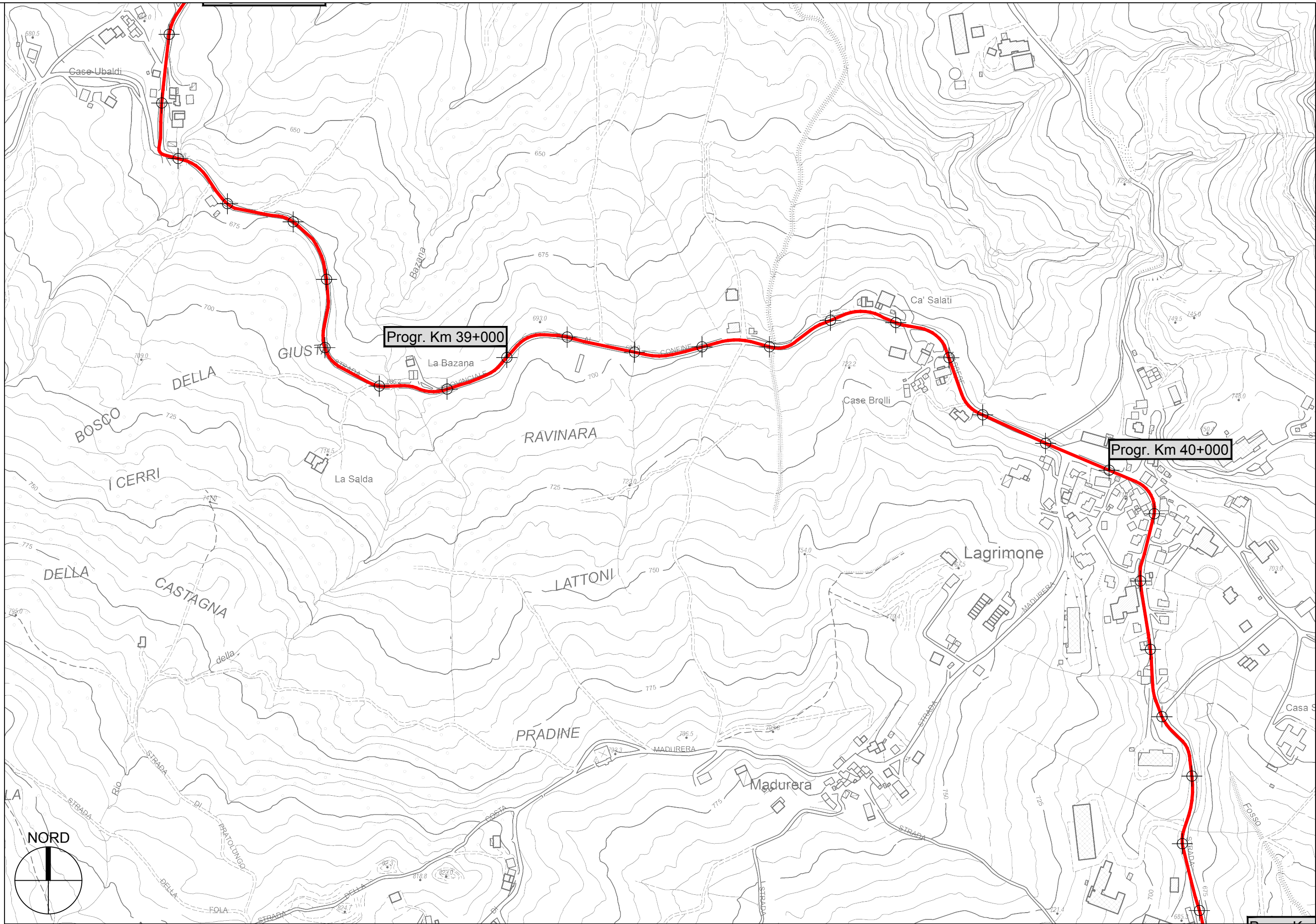
Il Progettista
Geom. Antonio Mesti

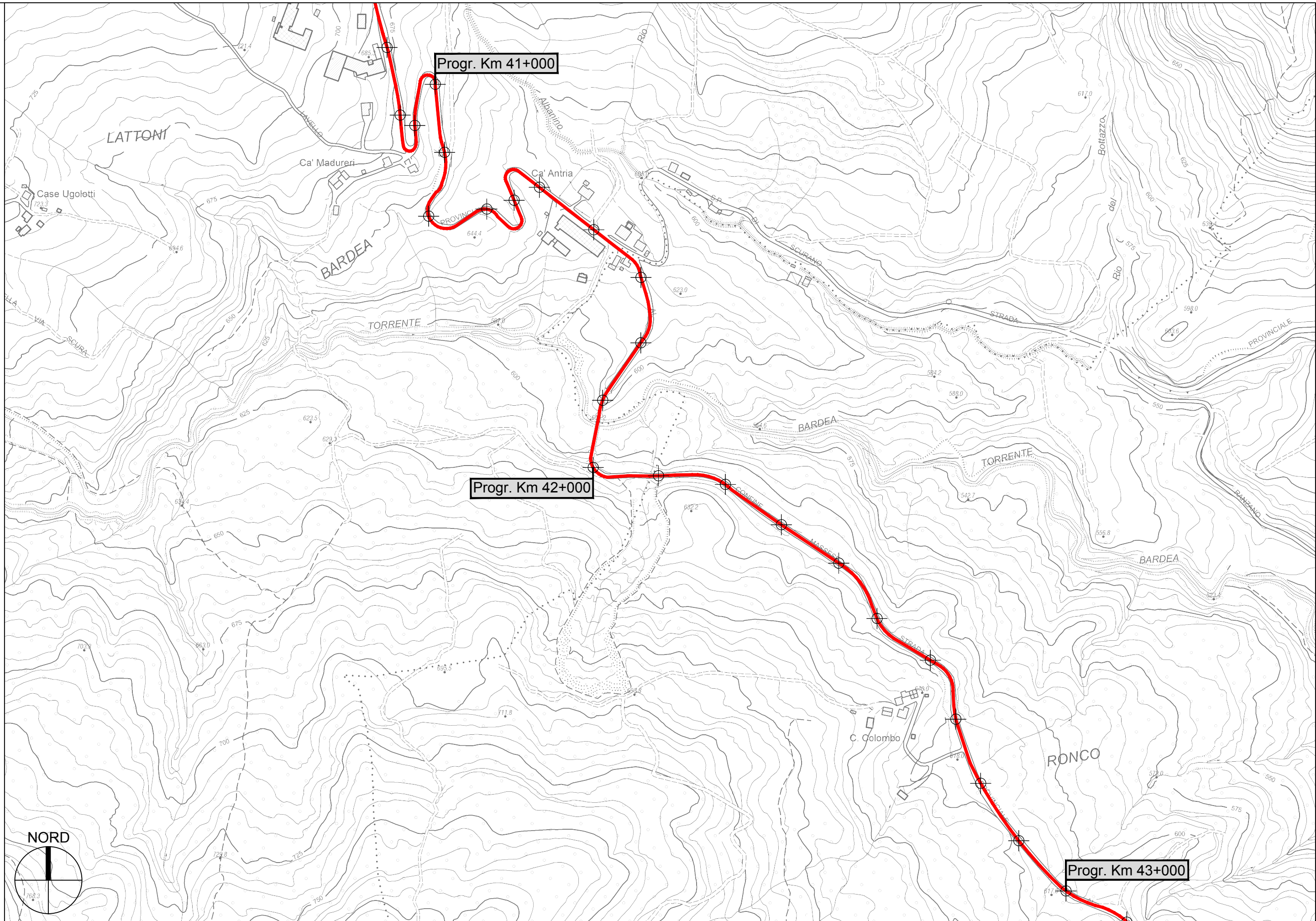
Il Coordinatore
Geom. Antonio Mesti

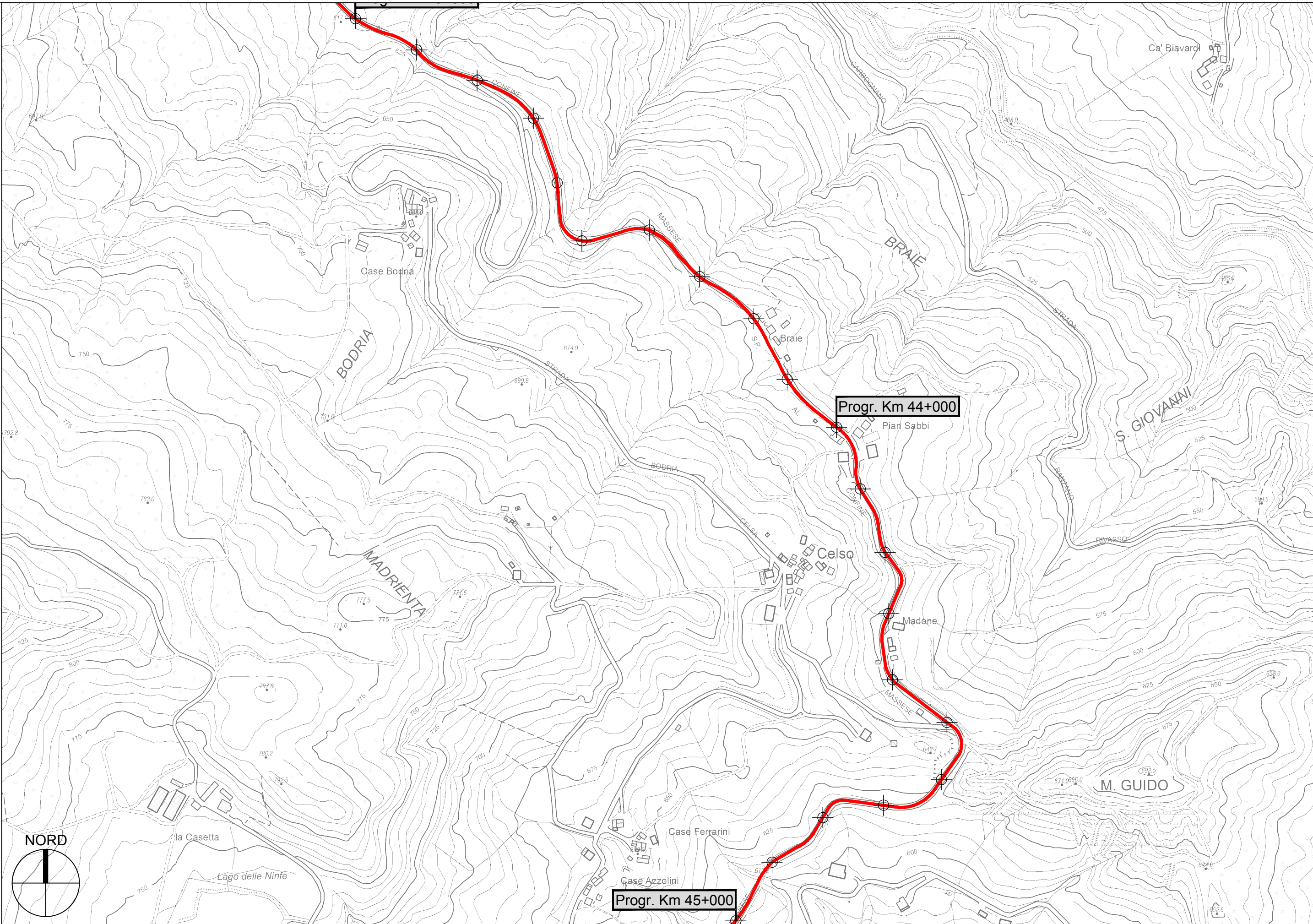


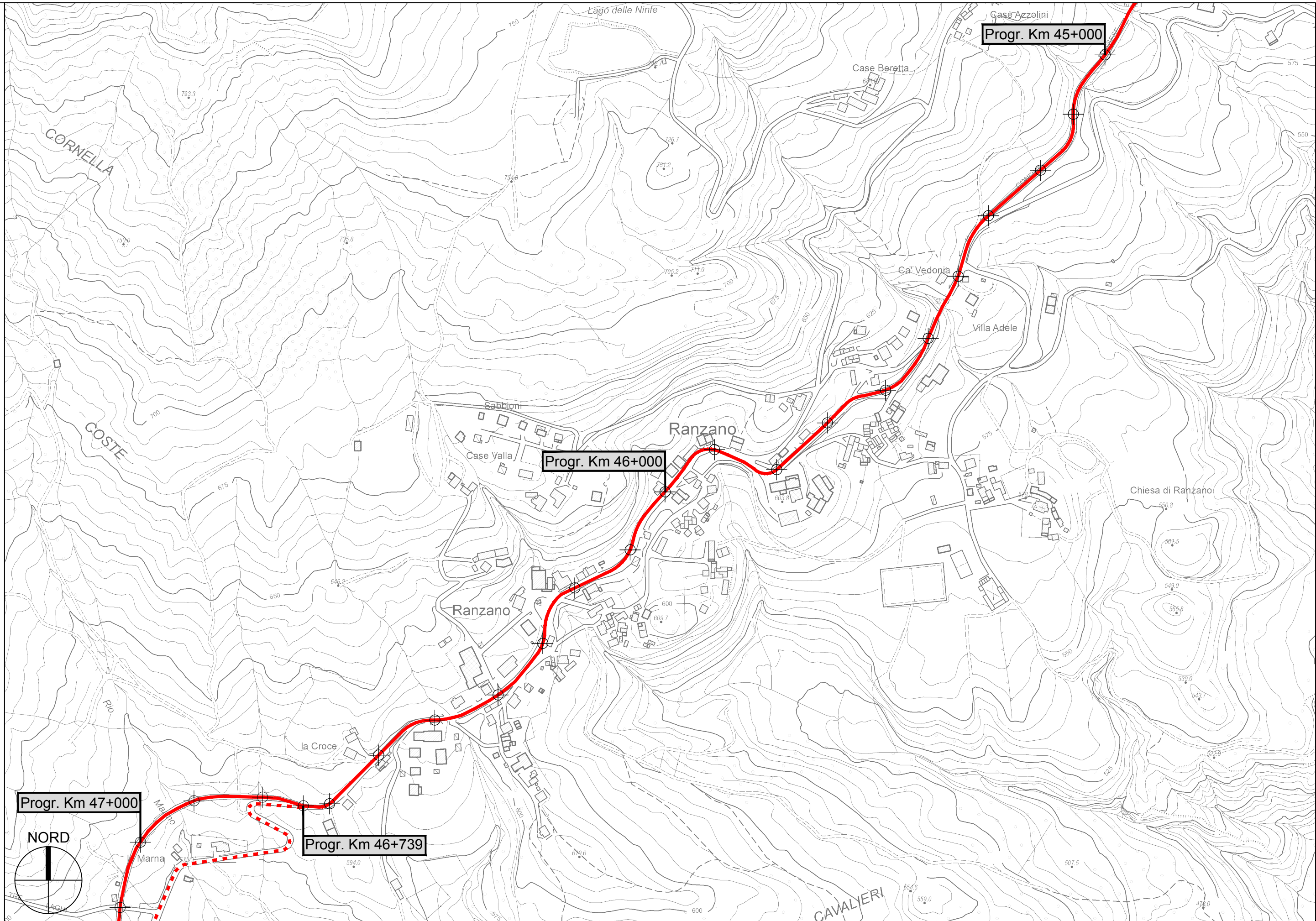


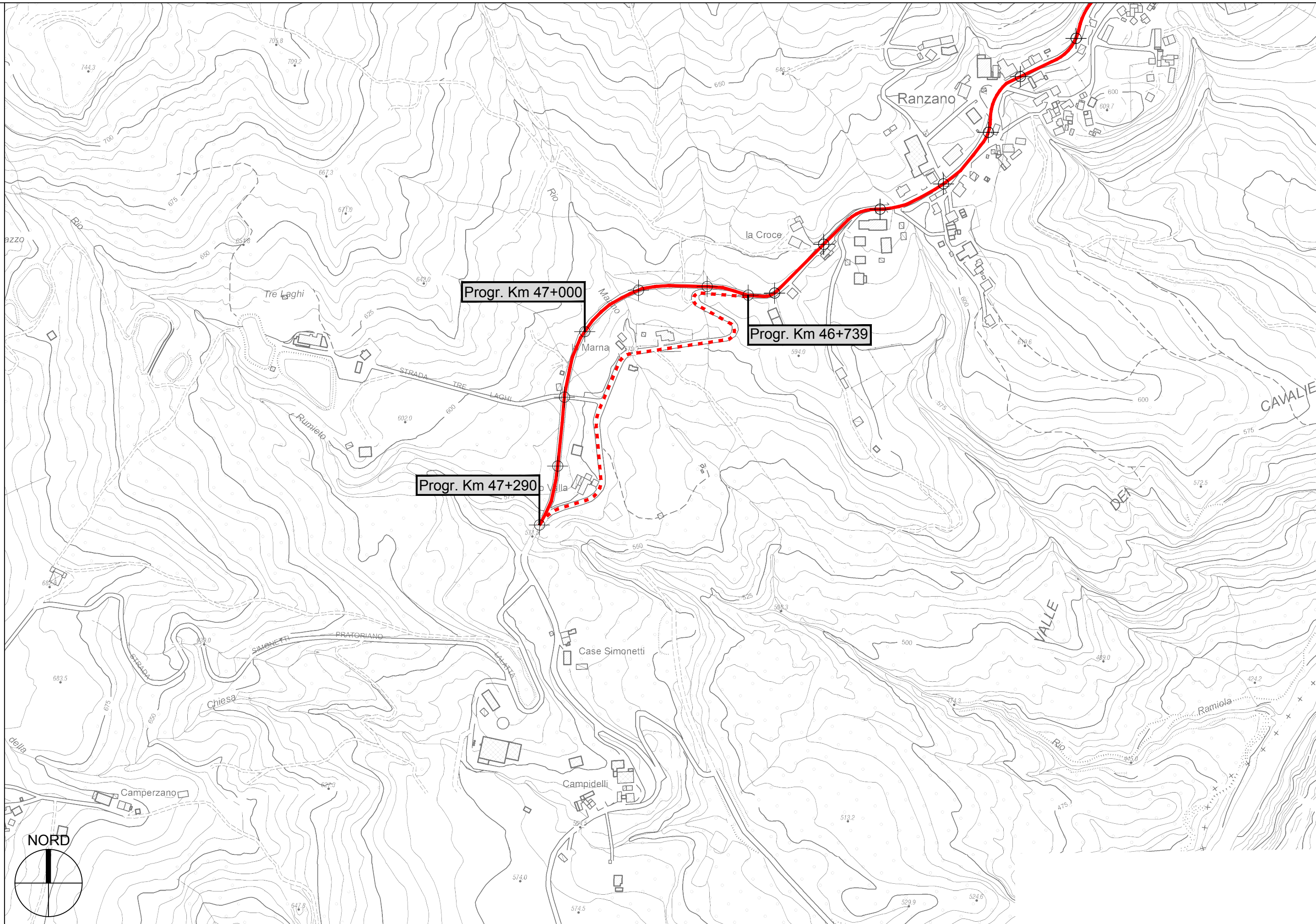












Progr. Km 47+000

Progr. Km 46+739

Progr. Km 47+290



