

PROVINCIA DI PARMA
SERVIZIO VIABILITA' E INFRASTRUTTURE
- TRASPORTI ECCEZIONALI - ESPROPRI - EDILIZIA SCOLASTICA -
MANUTENZIONE DEL PATRIMONIO

**RIPRISTINO, CONSOLIDAMENTO E MESSA IN SICUREZZA
DELLE STRADE PROVINCIALI CON FINANZIAMENTO STATALE
(MINISTERO INFRASTRUTTURE E TRASPORTI - D.M. 49/2018):
SETTORE PEDEMONTANA. ANNO 2021.**



PROGETTO DEFINITIVO-ESECUTIVO

DESCRIZIONE	ELABORATO
PLANIMETRIE: TRATTI DI INTERVENTO	7

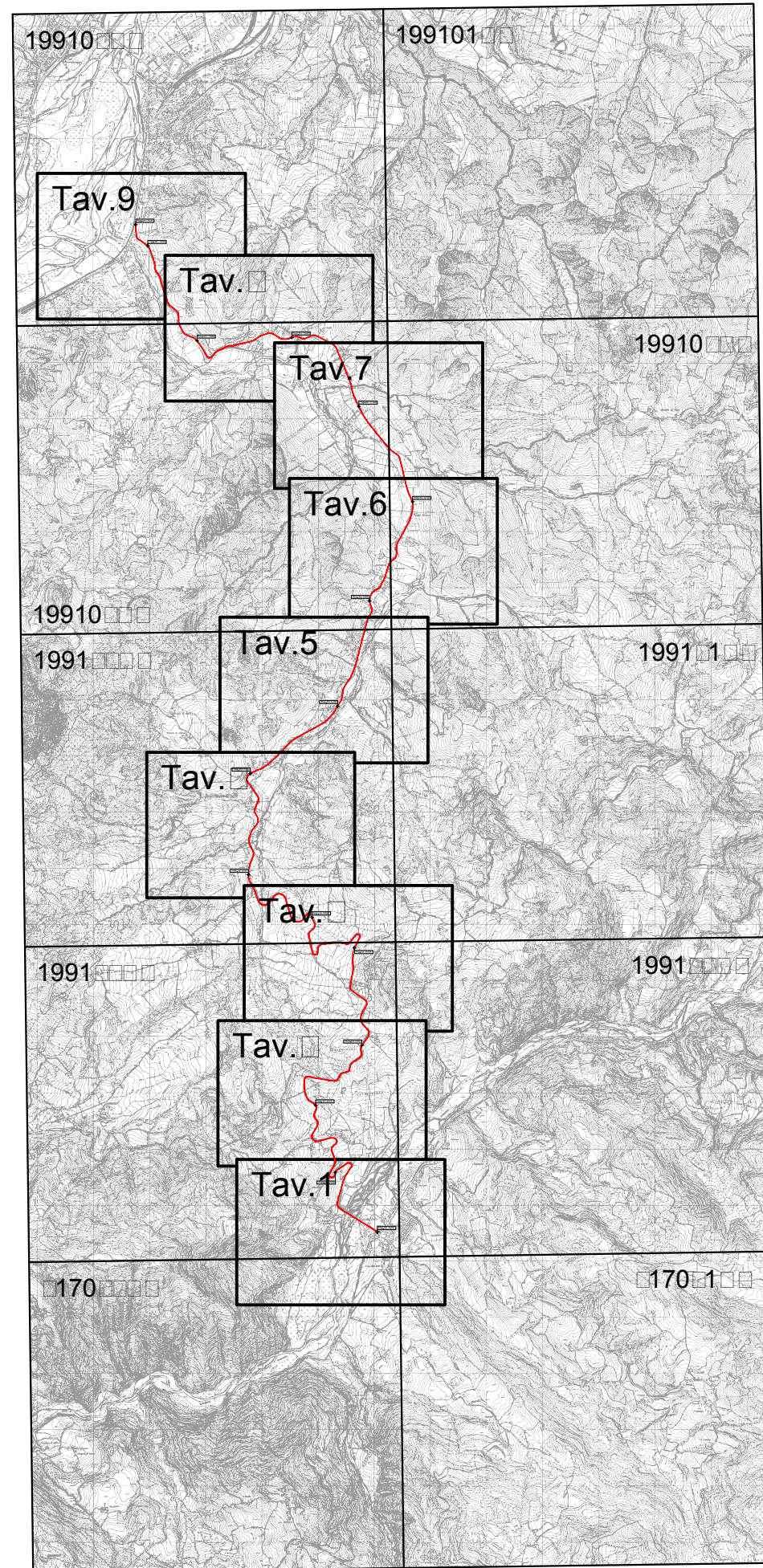
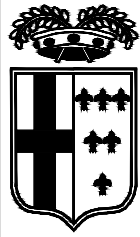
SCALA	DATA
-	GENNAIO 2021

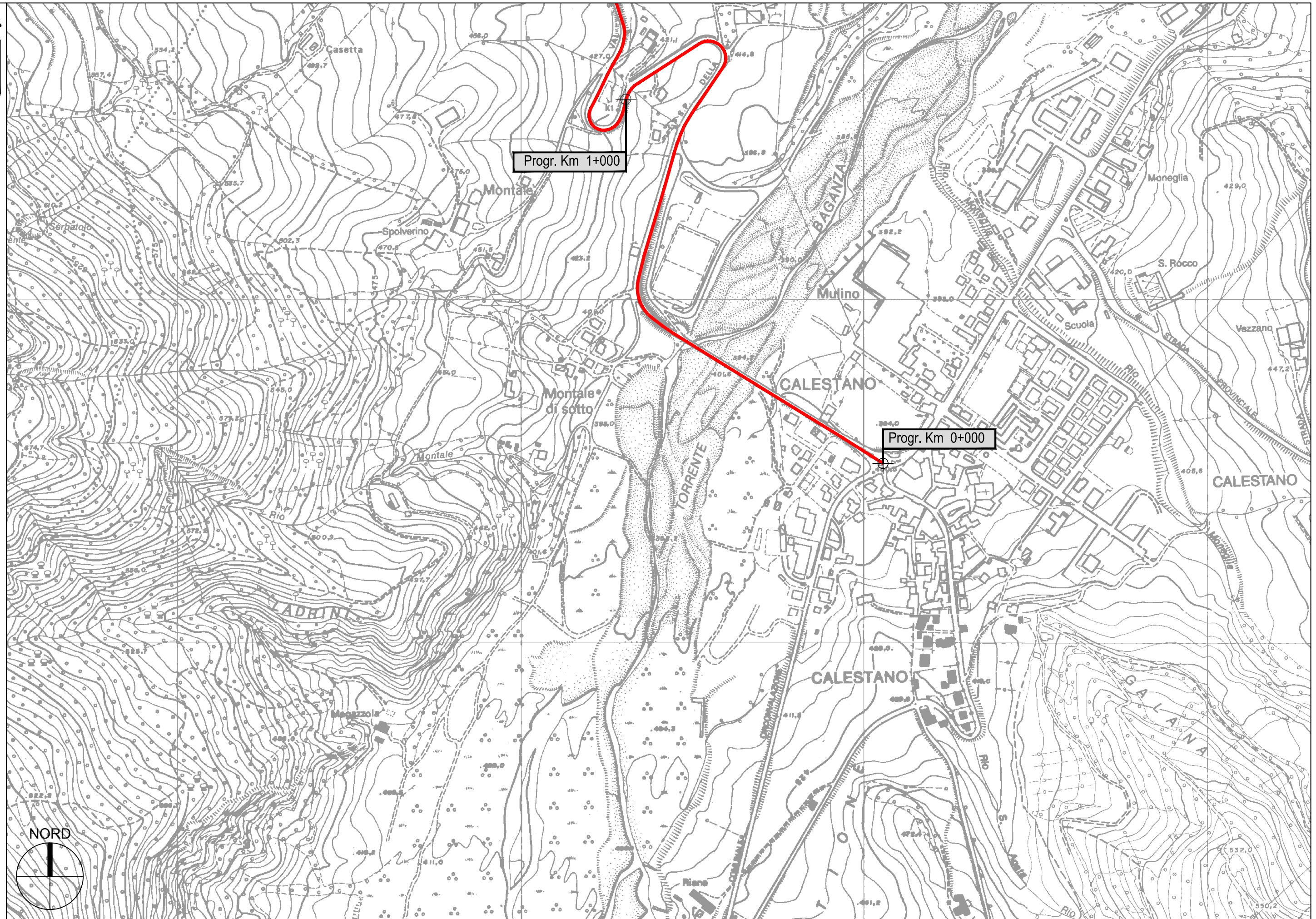
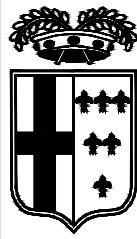
Il Responsabile del Servizio
Ing. Gianpaolo Monteverdi

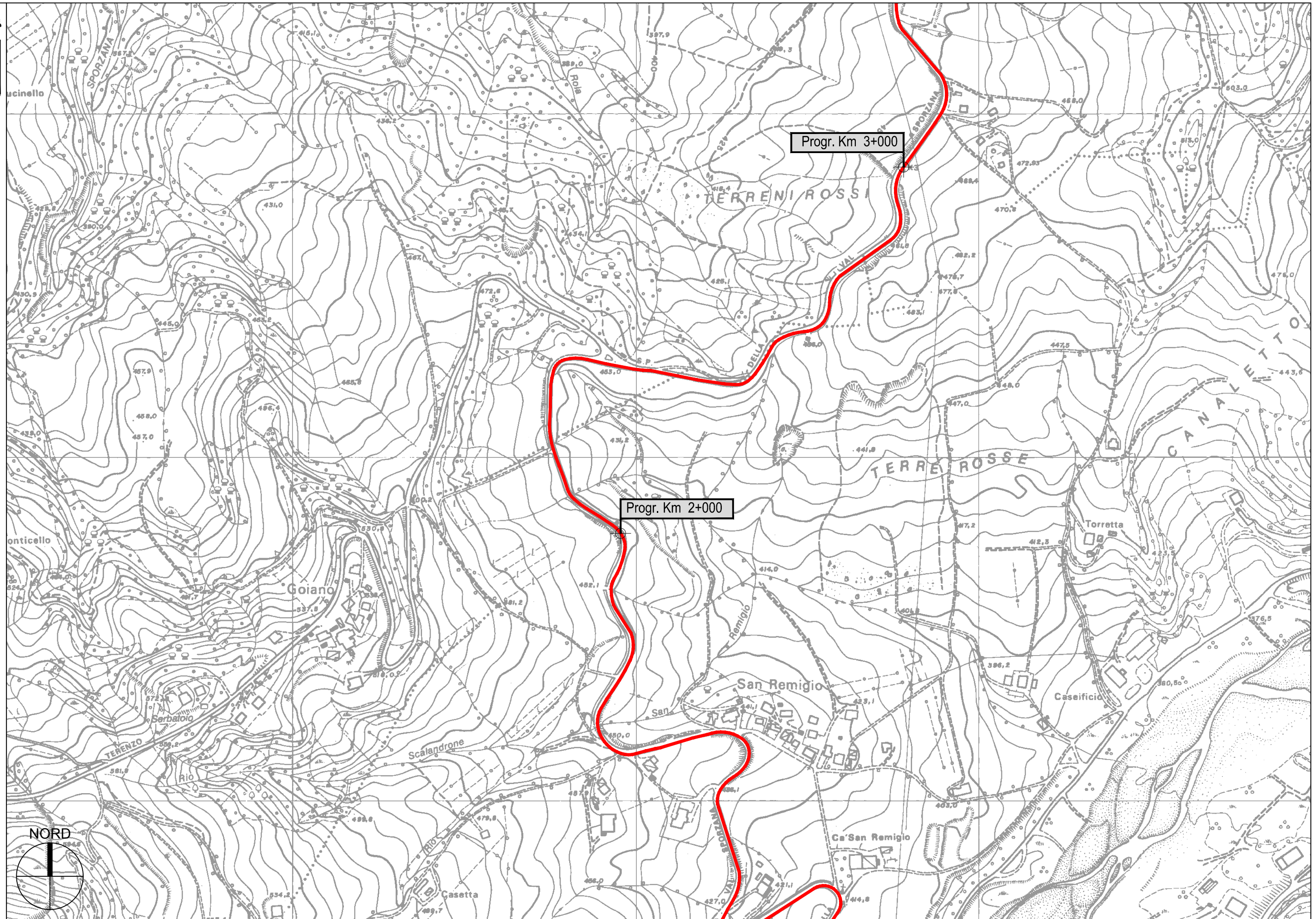
Il Responsabile del Procedimento
Arch. Gloria Resteghini

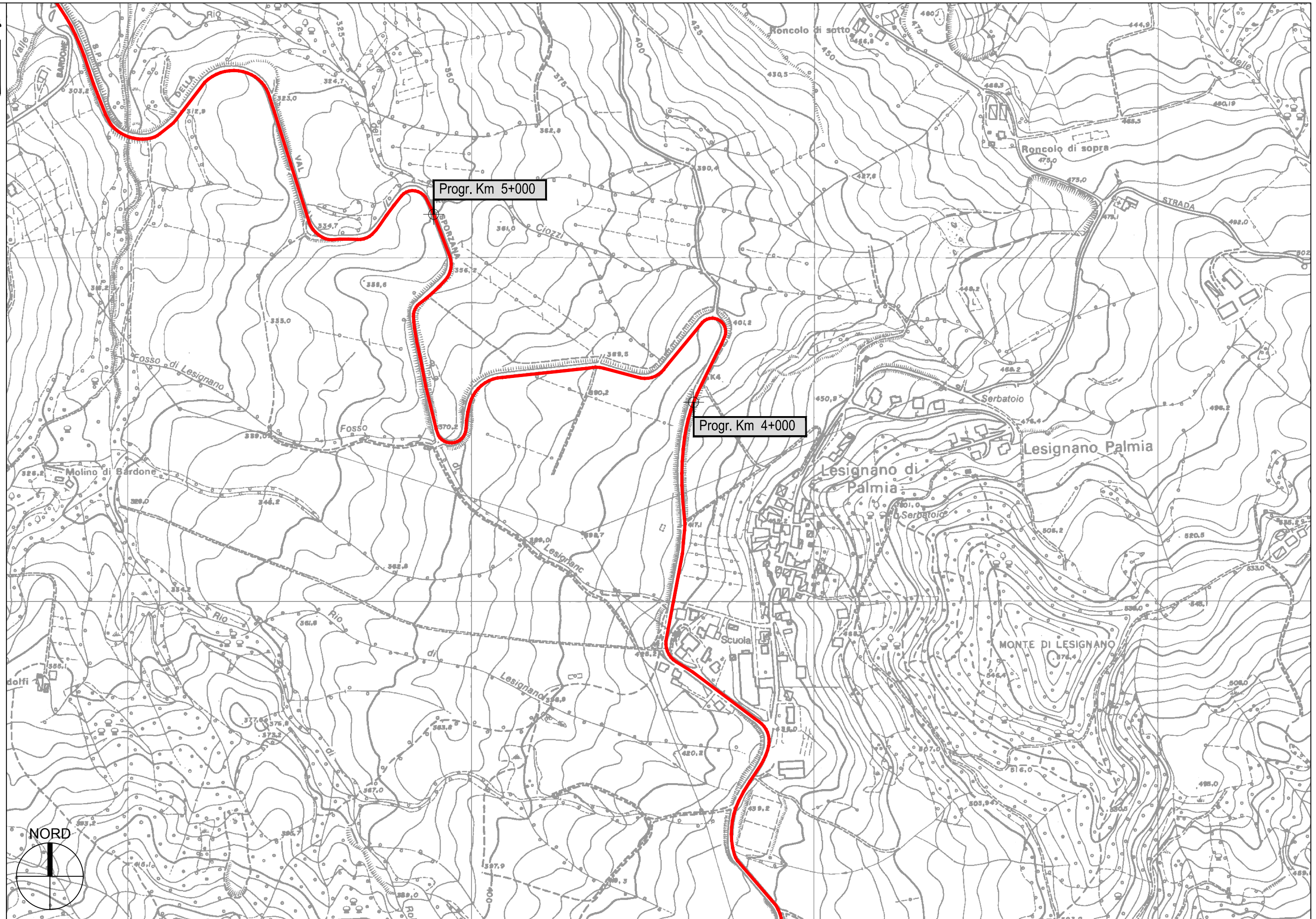
Il Progettista
Geom. Antonio Mesti

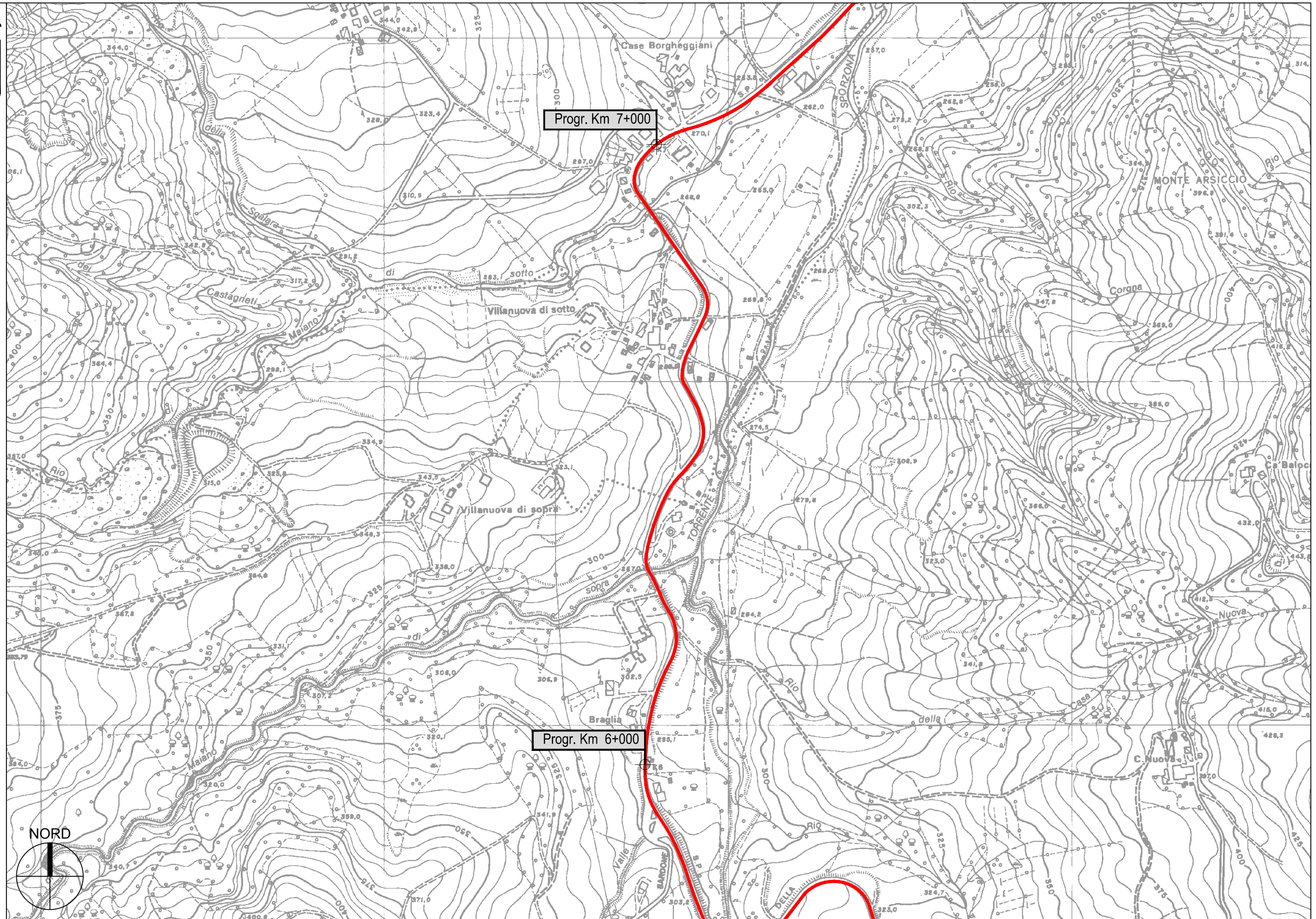
Il Coordinatore
Geom. Antonio Mesti

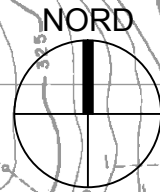
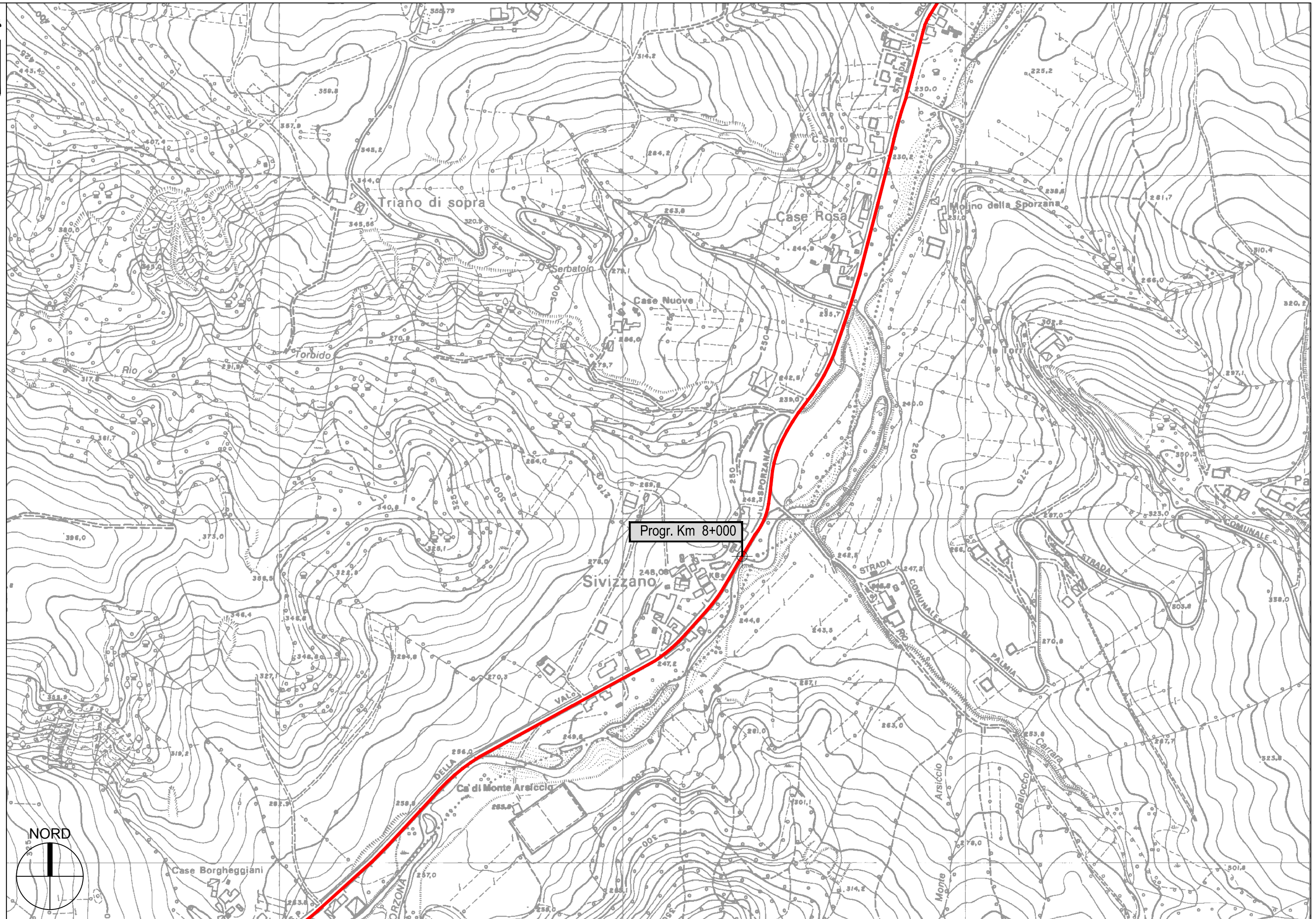


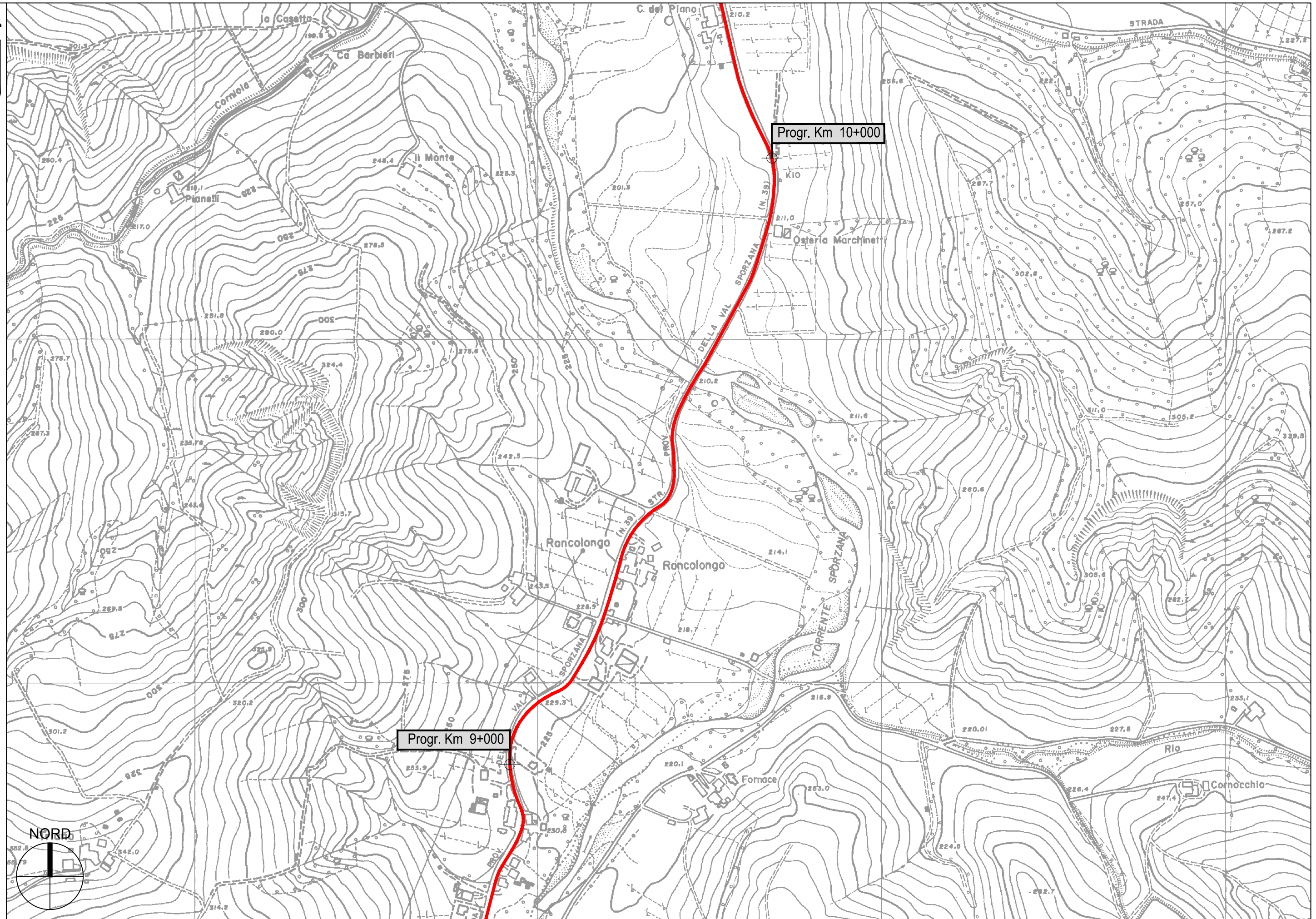


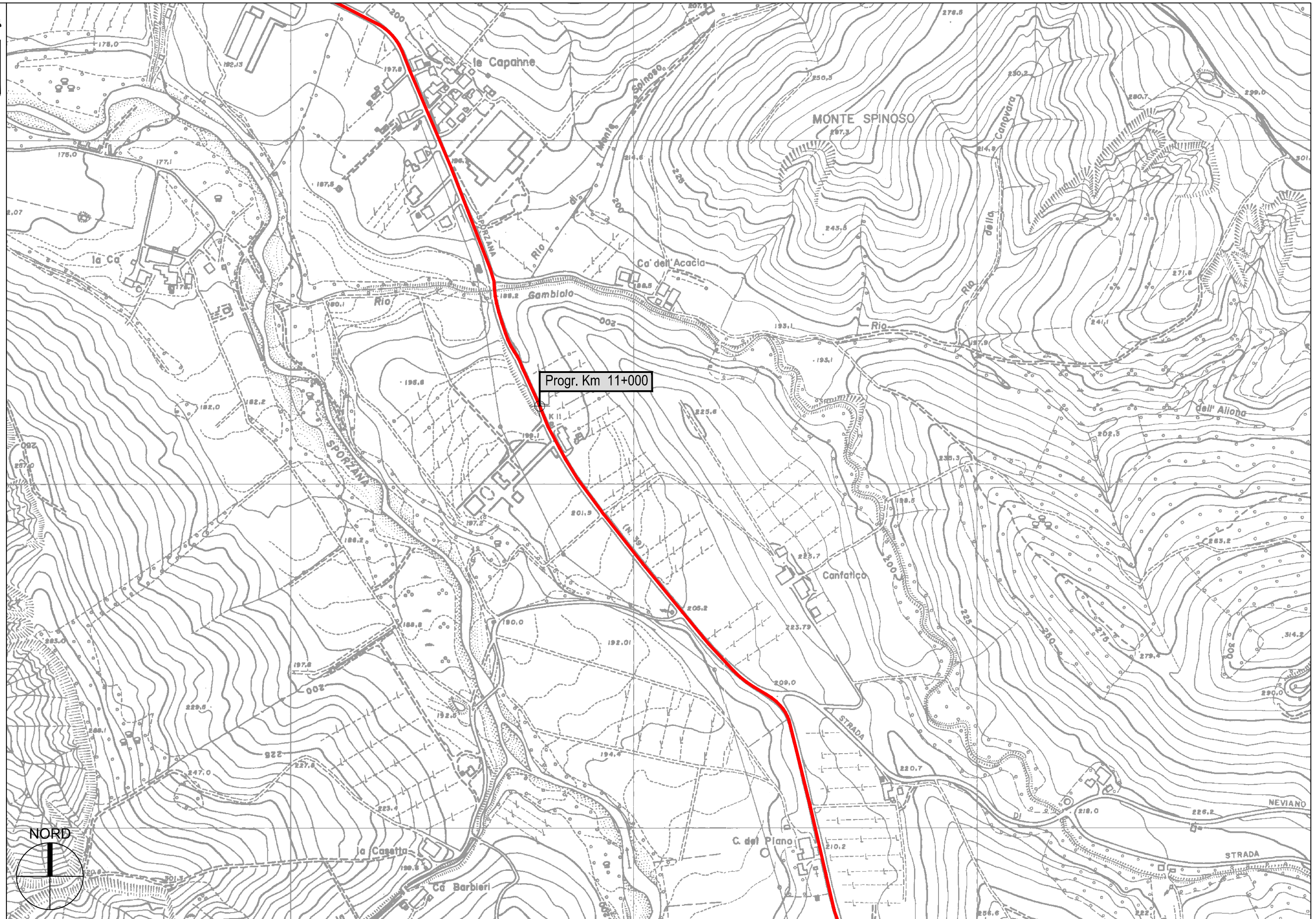


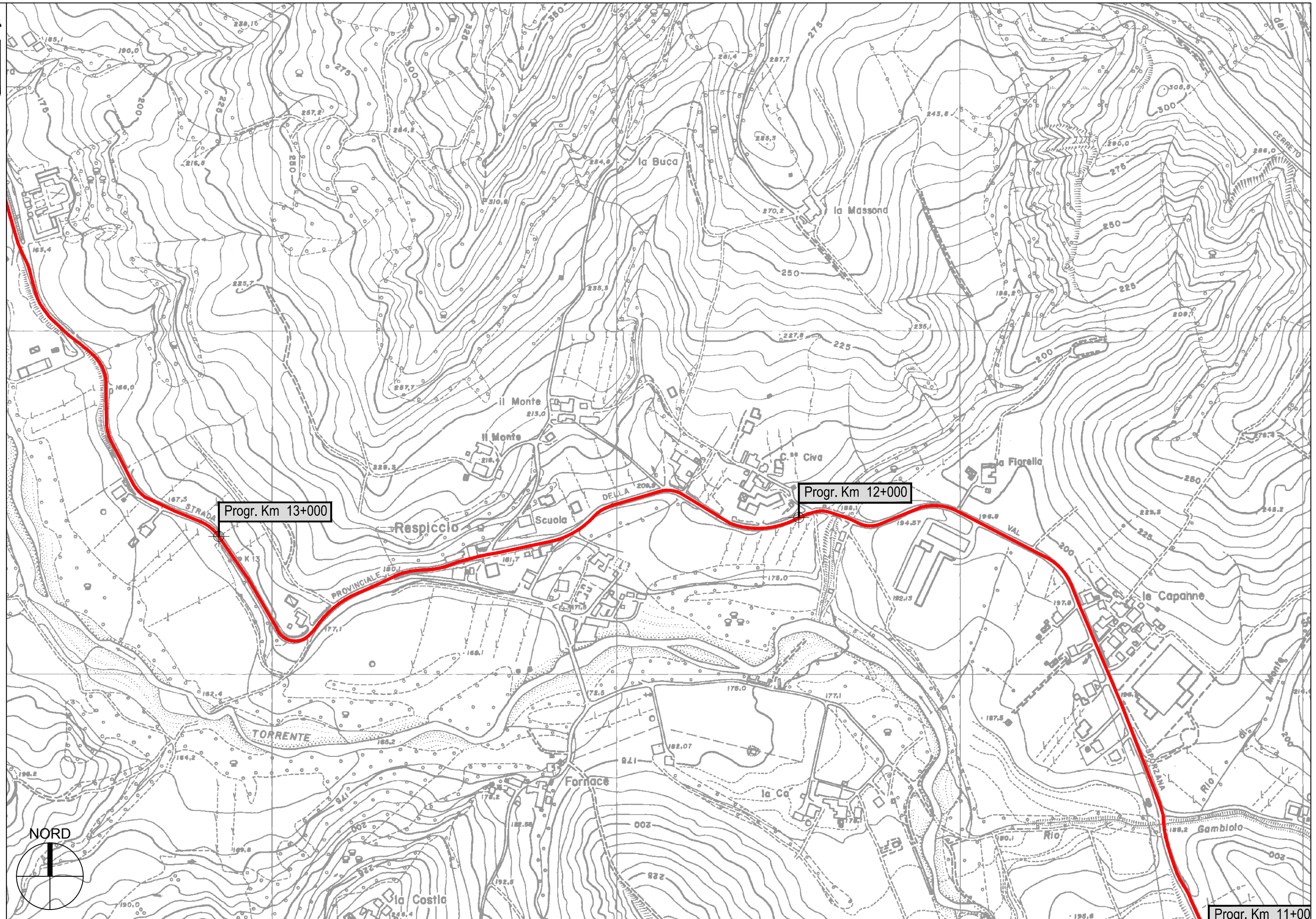


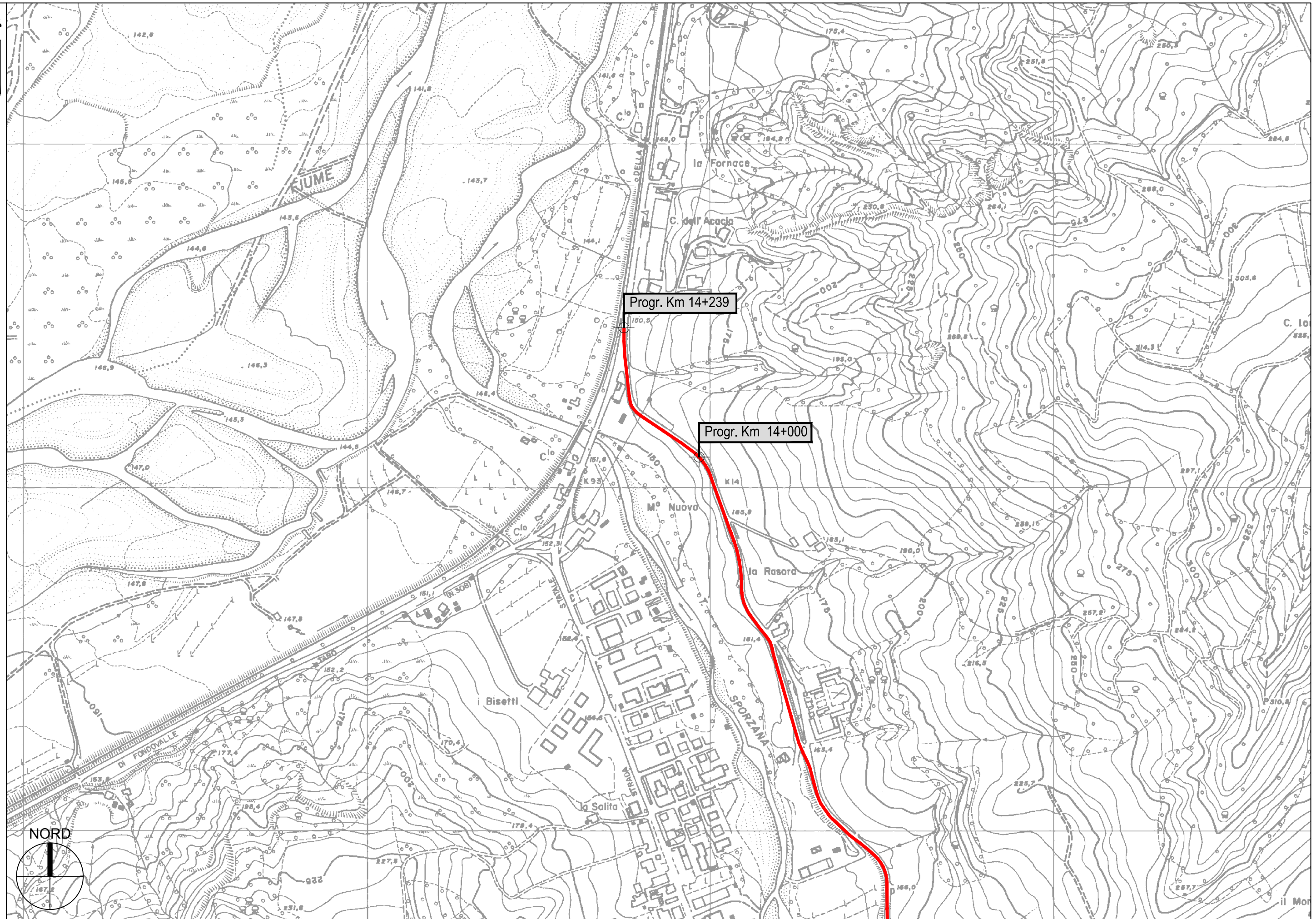


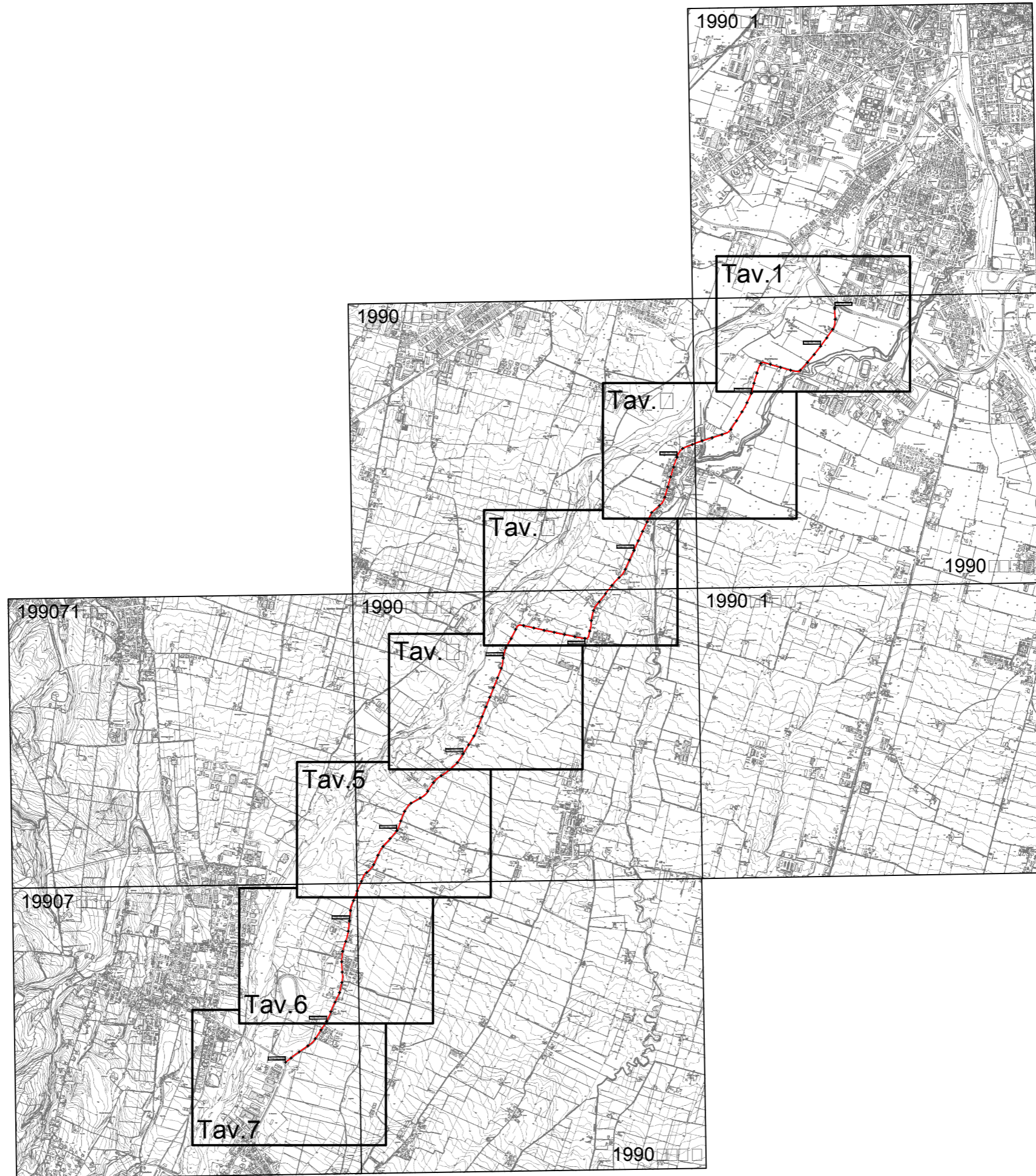
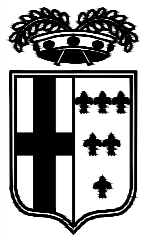


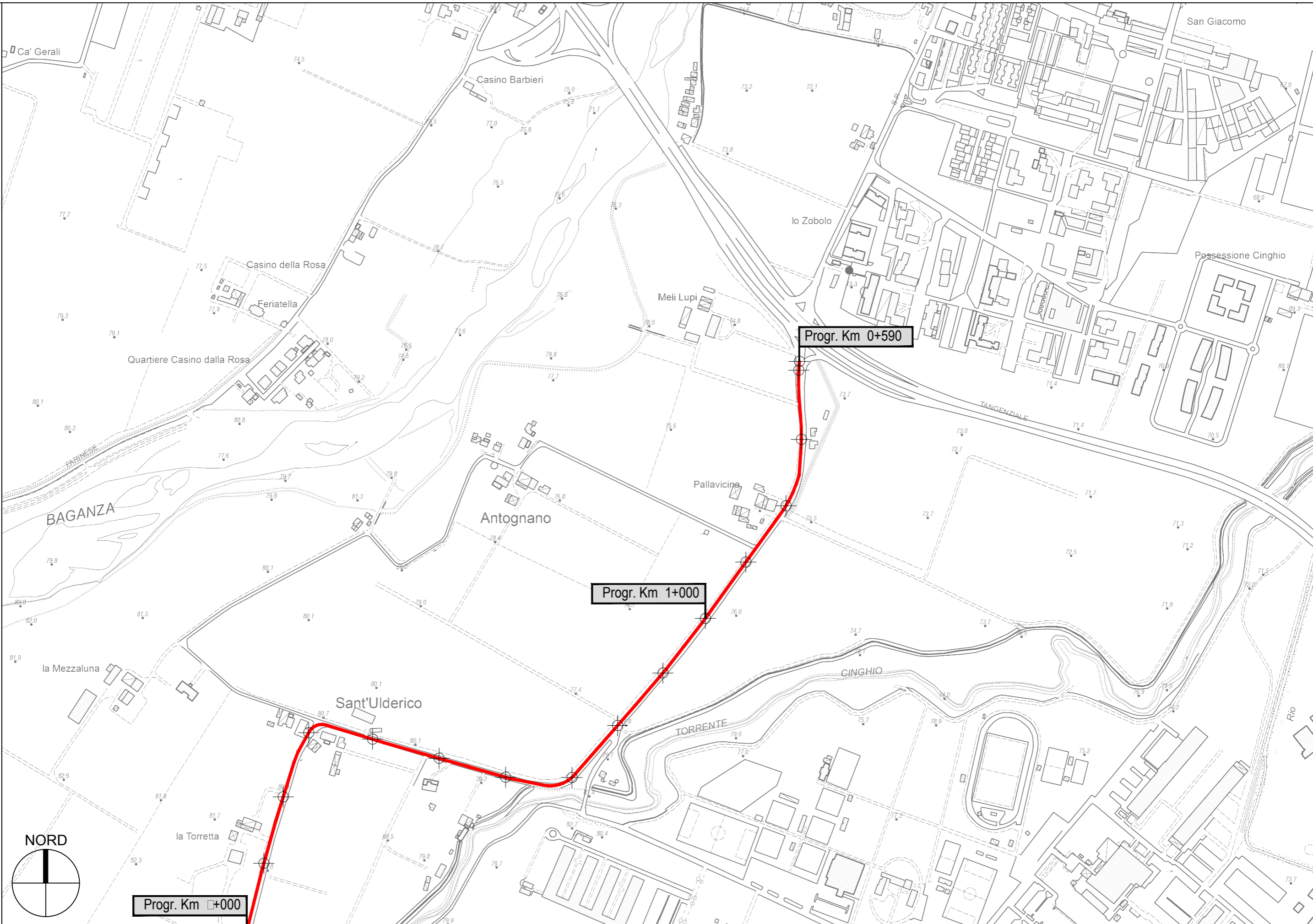


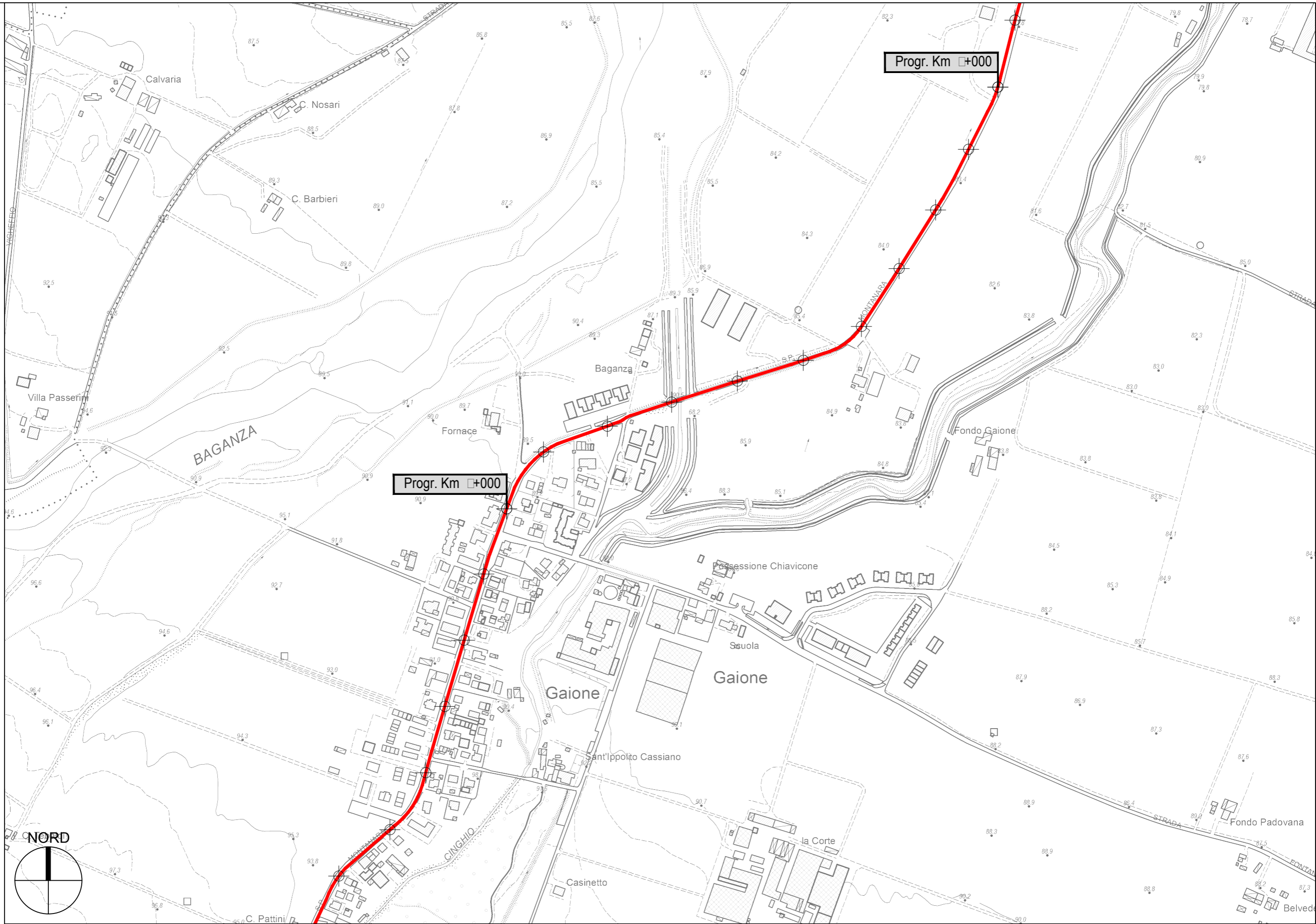
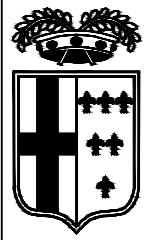


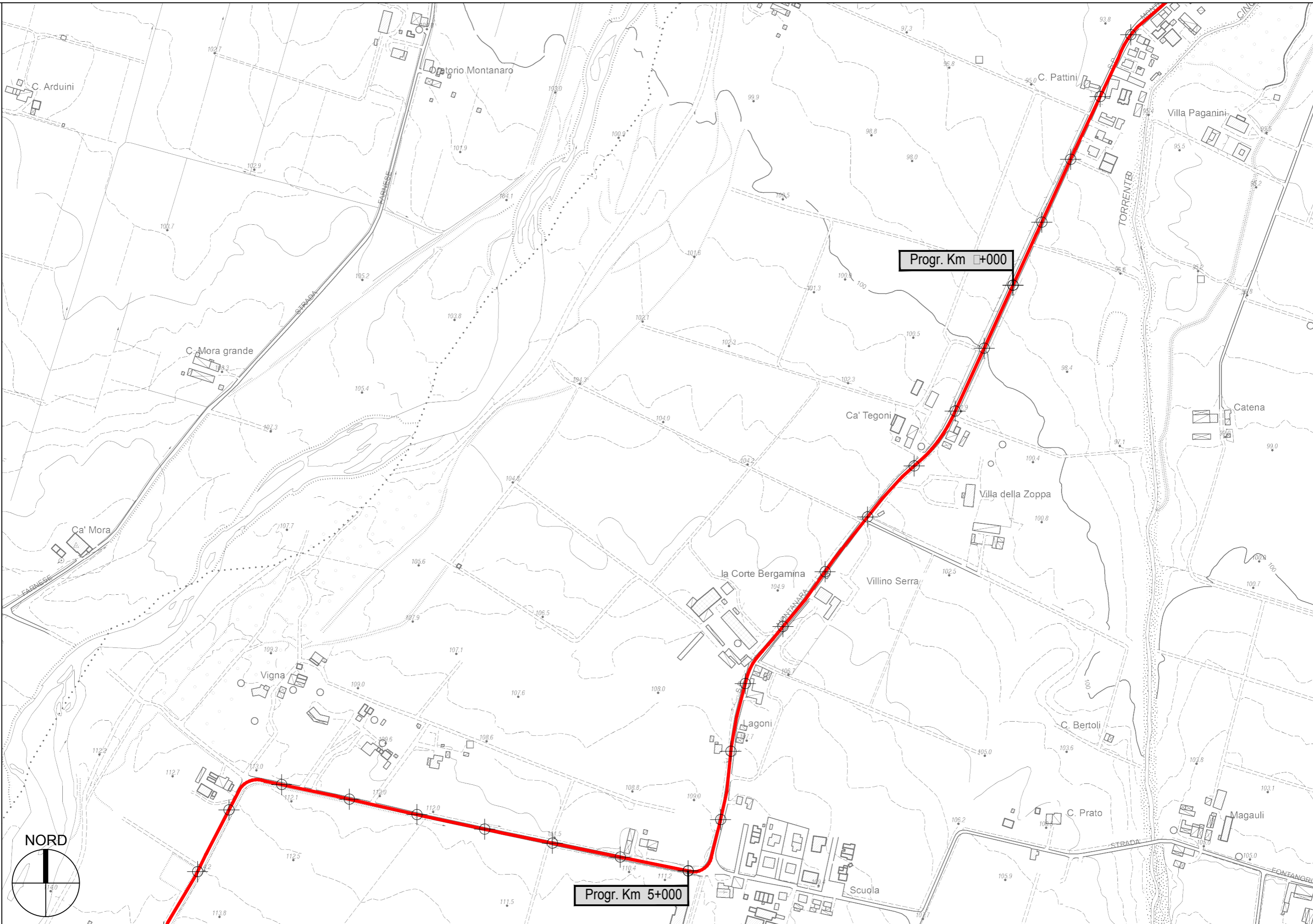






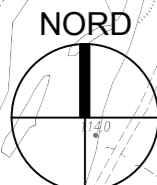






Progr. Km +000

Progr. Km 5+000



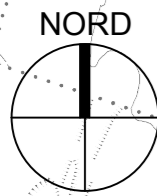


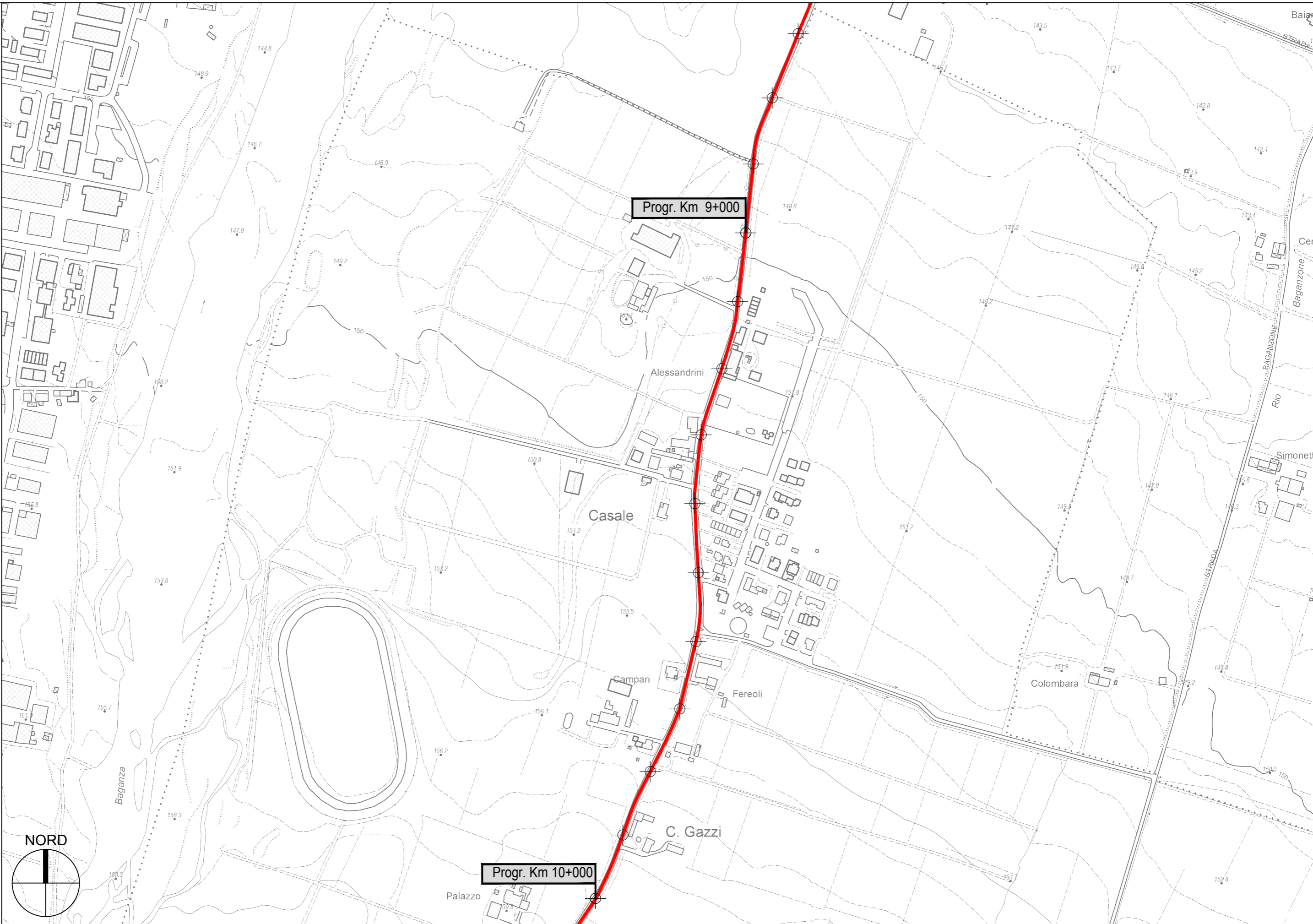
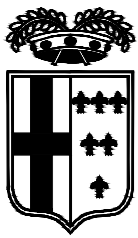
Progr. Km 5+000

Progr. Km 6+000

Progr. Km 7+000



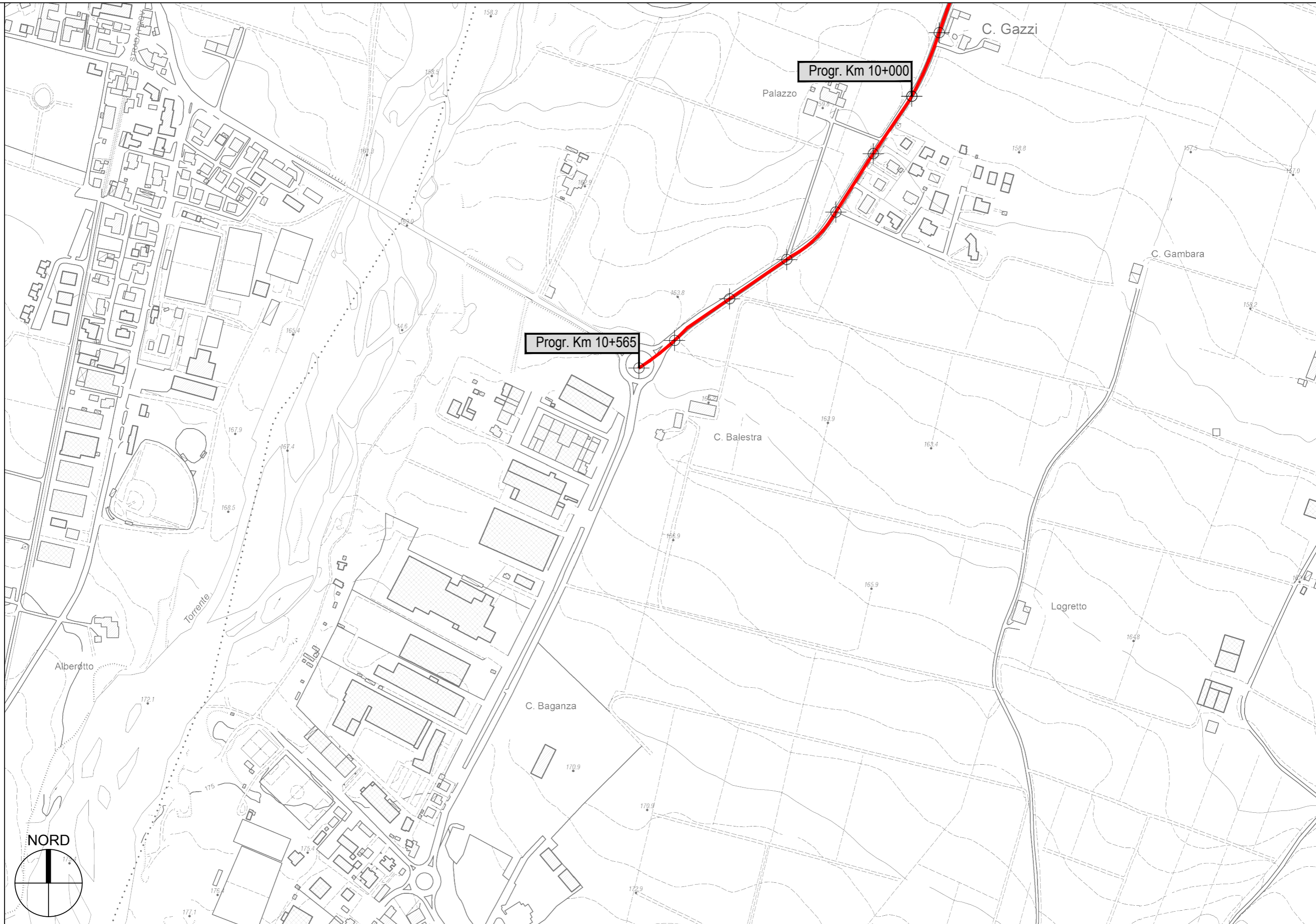
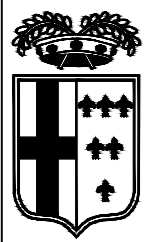


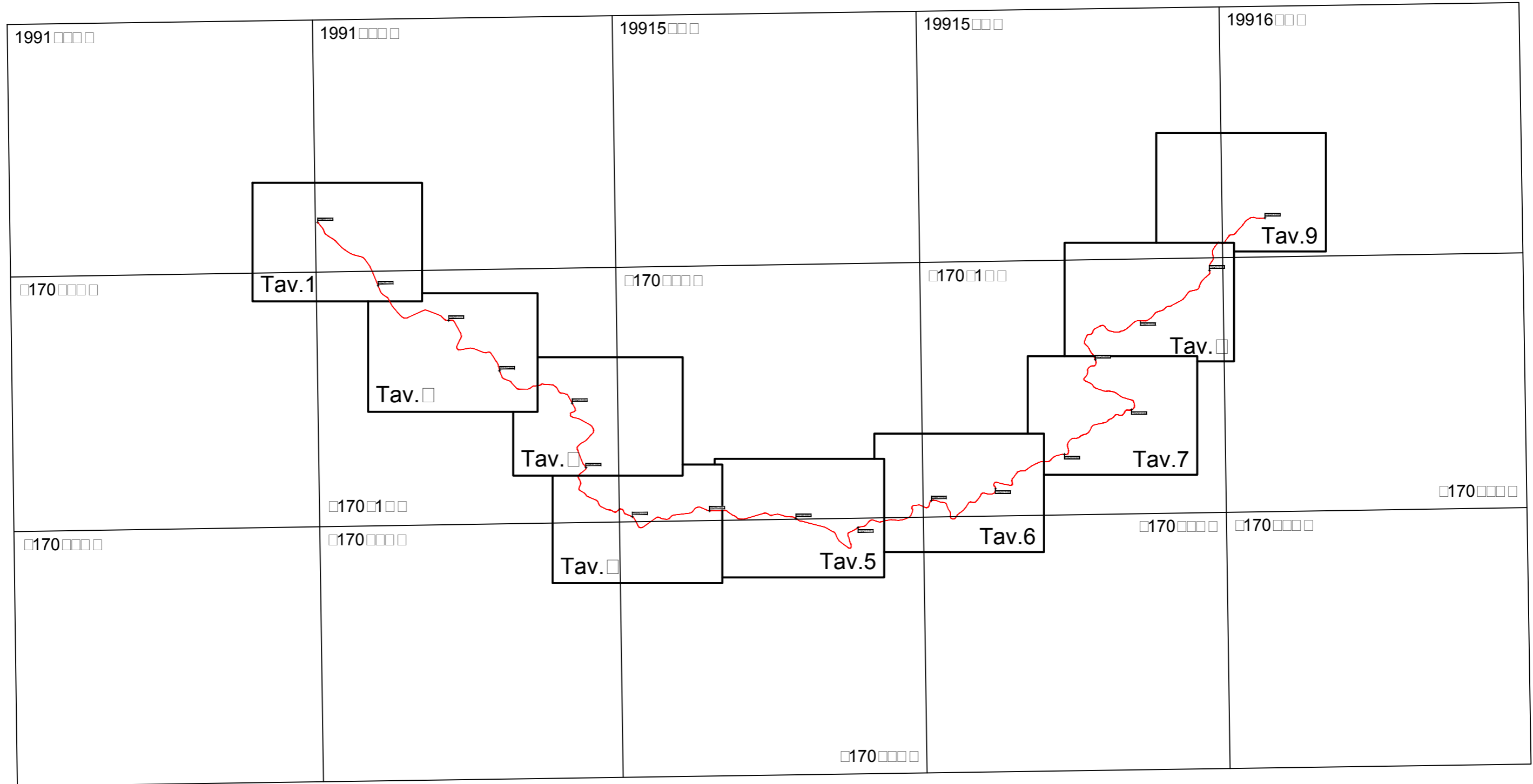
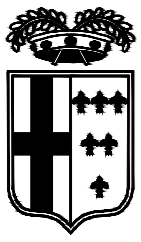


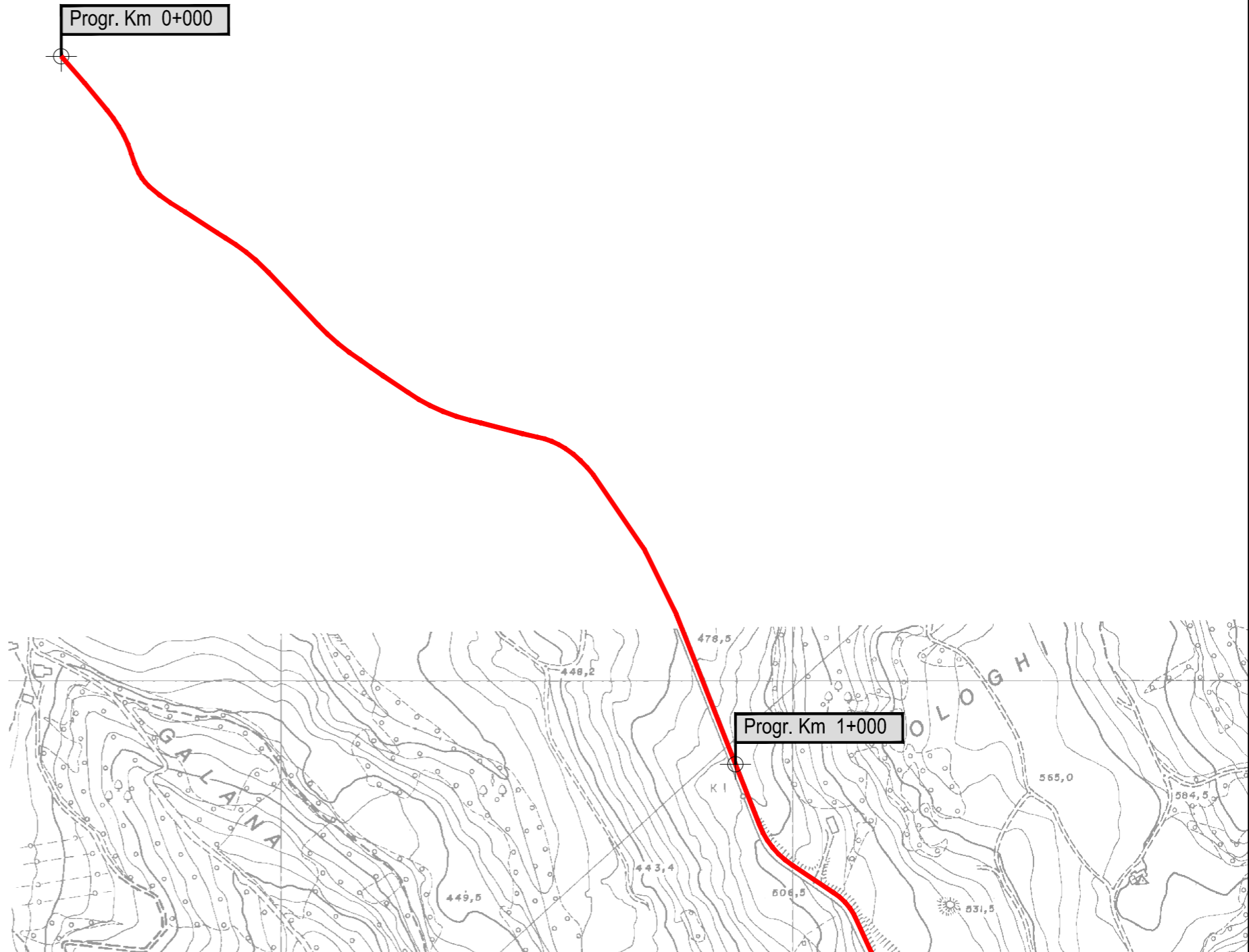
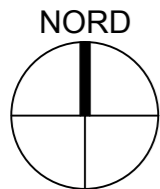
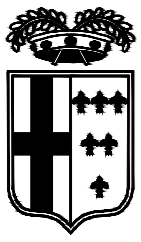
Progr. Km 9+000

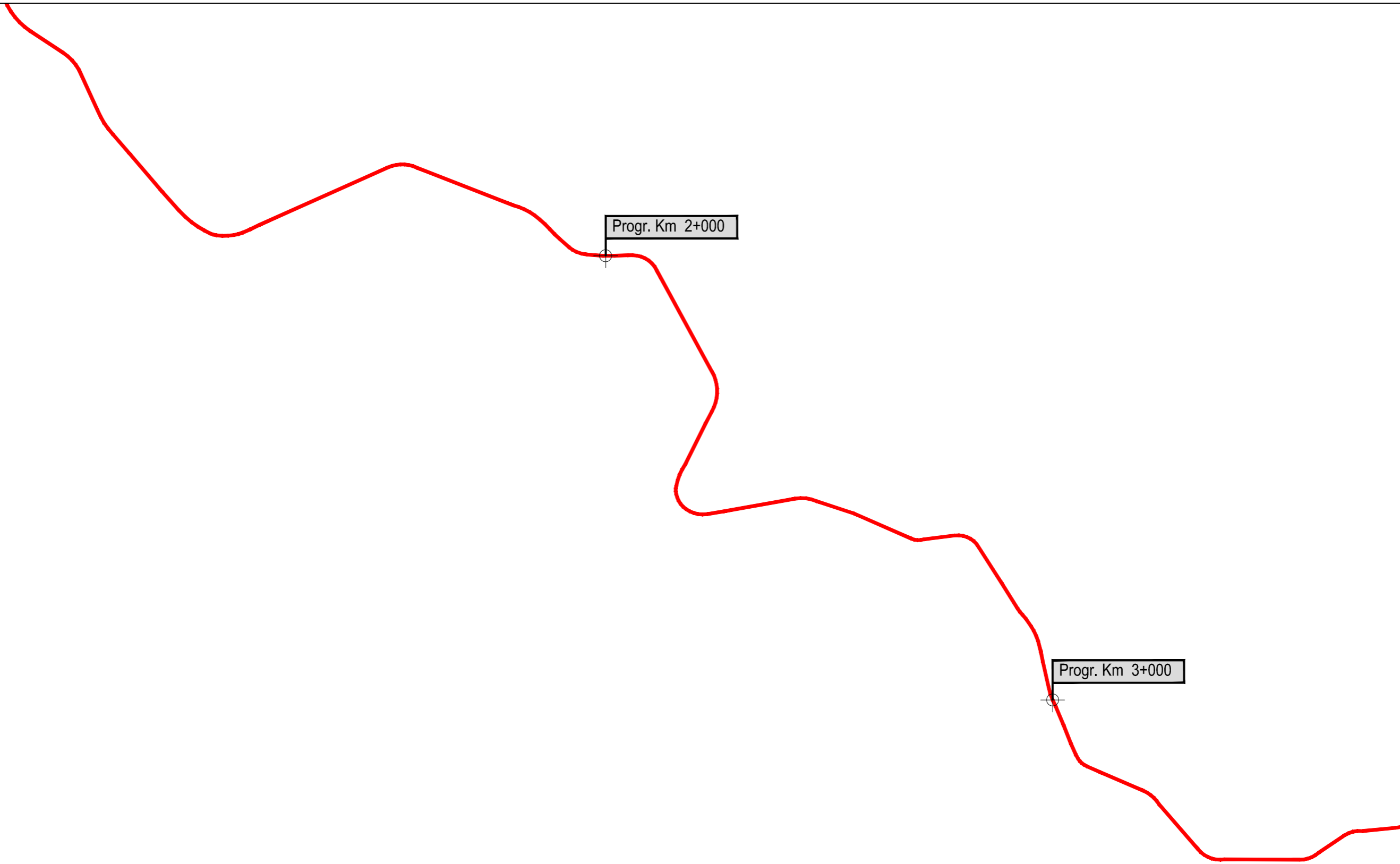
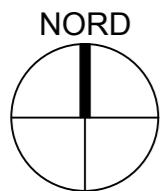
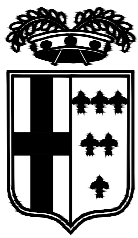
Progr. Km 10+000

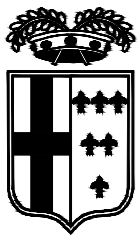






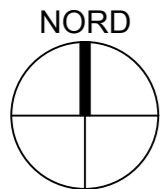
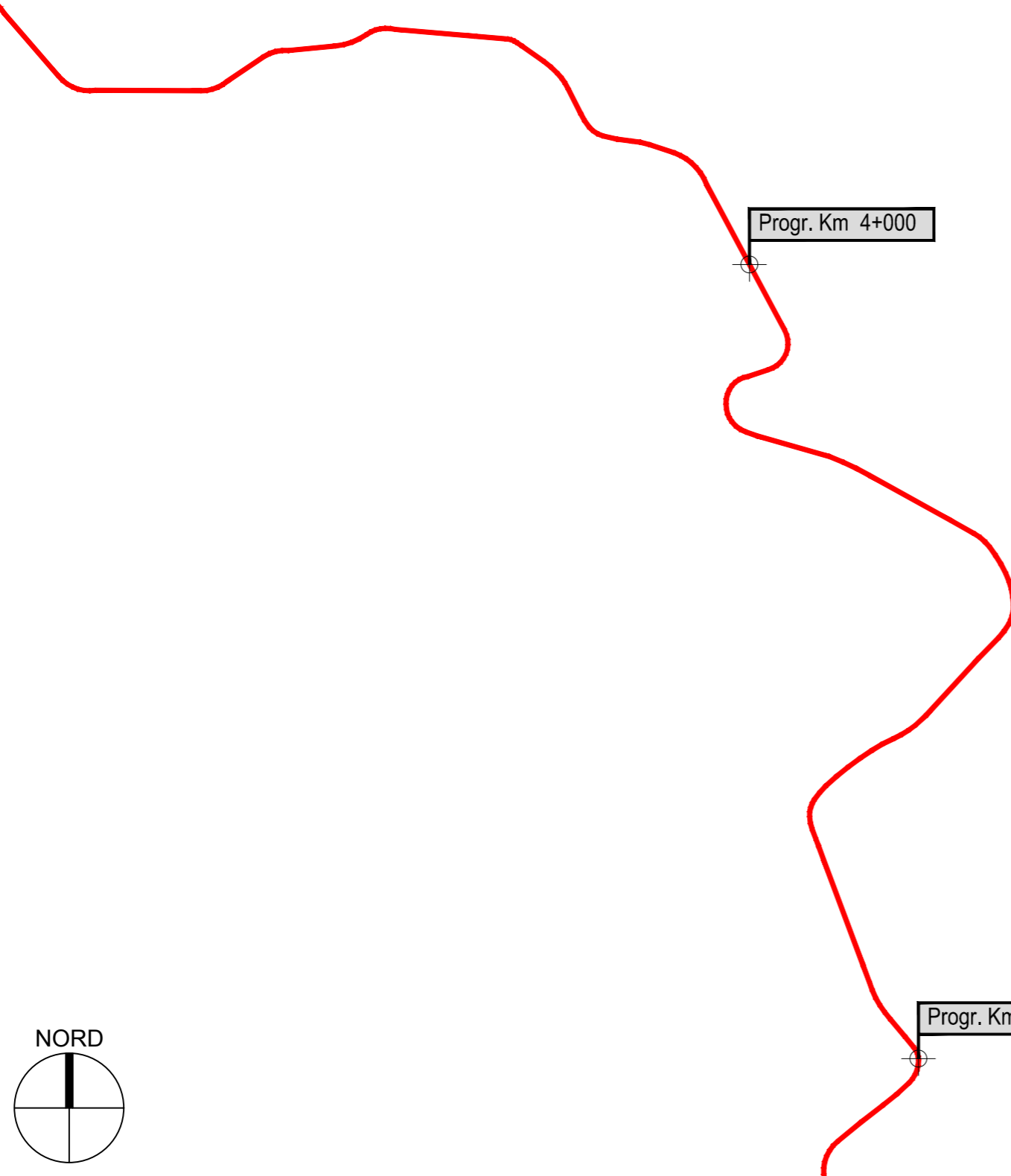






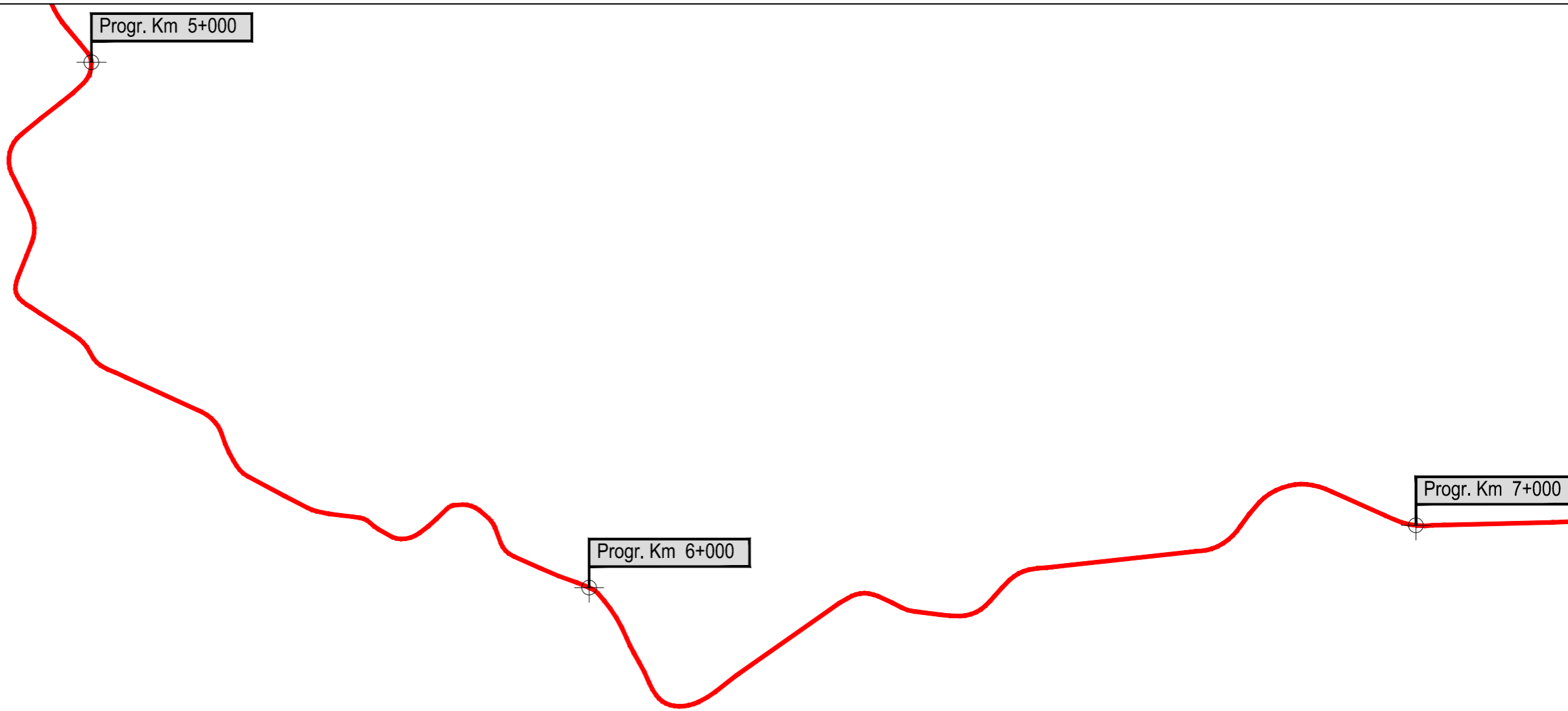
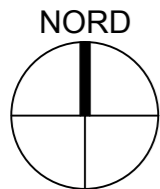
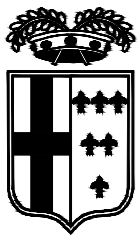
00

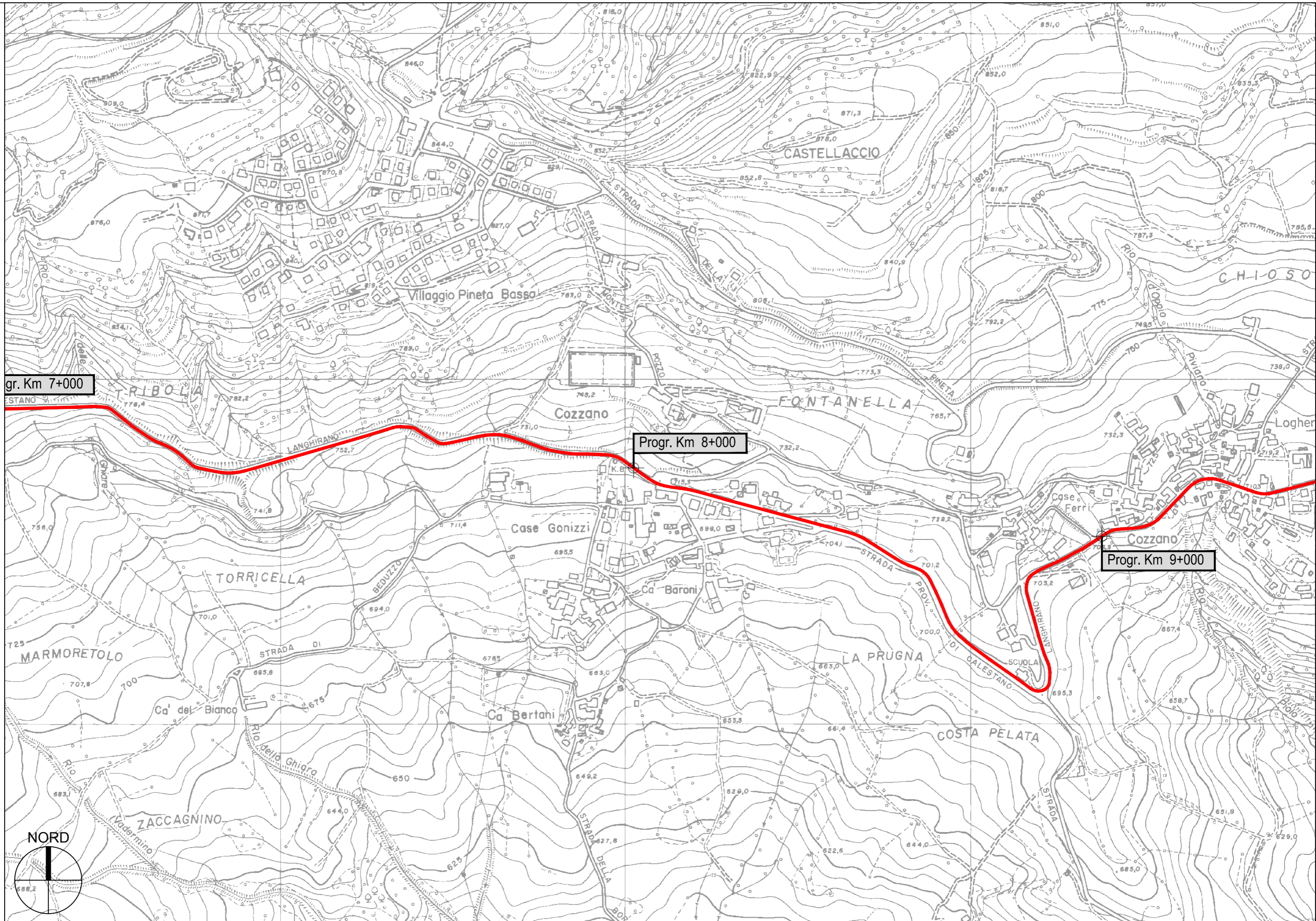
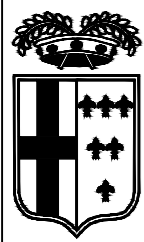
PROVINCIA DI PARMA - Servizio Patrimonio Viabilità ed Infrastrutture



S.P. 61 \square ale \square tano- \square anghirano - Sviluppo chilometrico 16+97 \square km

Tavola \square di 9 - Scala 1 : 5.000





gr. Km 7+000

Progr. Km 8+000

Progr. Km 9+000



