



**PROVINCIA DI PARMA**  
**SERVIZIO VIABILITA' E INFRASTRUTTURE**  
**- TRASPORTI ECCEZIONALI - ESPROPRI - EDILIZIA SCOLASTICA -**  
**MANUTENZIONE DEL PATRIMONIO**

**RIPRISTINO, CONSOLIDAMENTO E MESSA IN SICUREZZA  
DELLE STRADE PROVINCIALI CON FINANZIAMENTO STATALE  
(MINISTERO INFRASTRUTTURE E TRASPORTI - D.M. 49/2018):  
SETTORE PEDEMONTANA. ANNO 2021.**



**PROGETTO DEFINITIVO-ESECUTIVO**

DESCRIZIONE	ELABORATO
<b>PLANIMETRIE: TRATTI DI INTERVENTO</b>	<b>7</b>

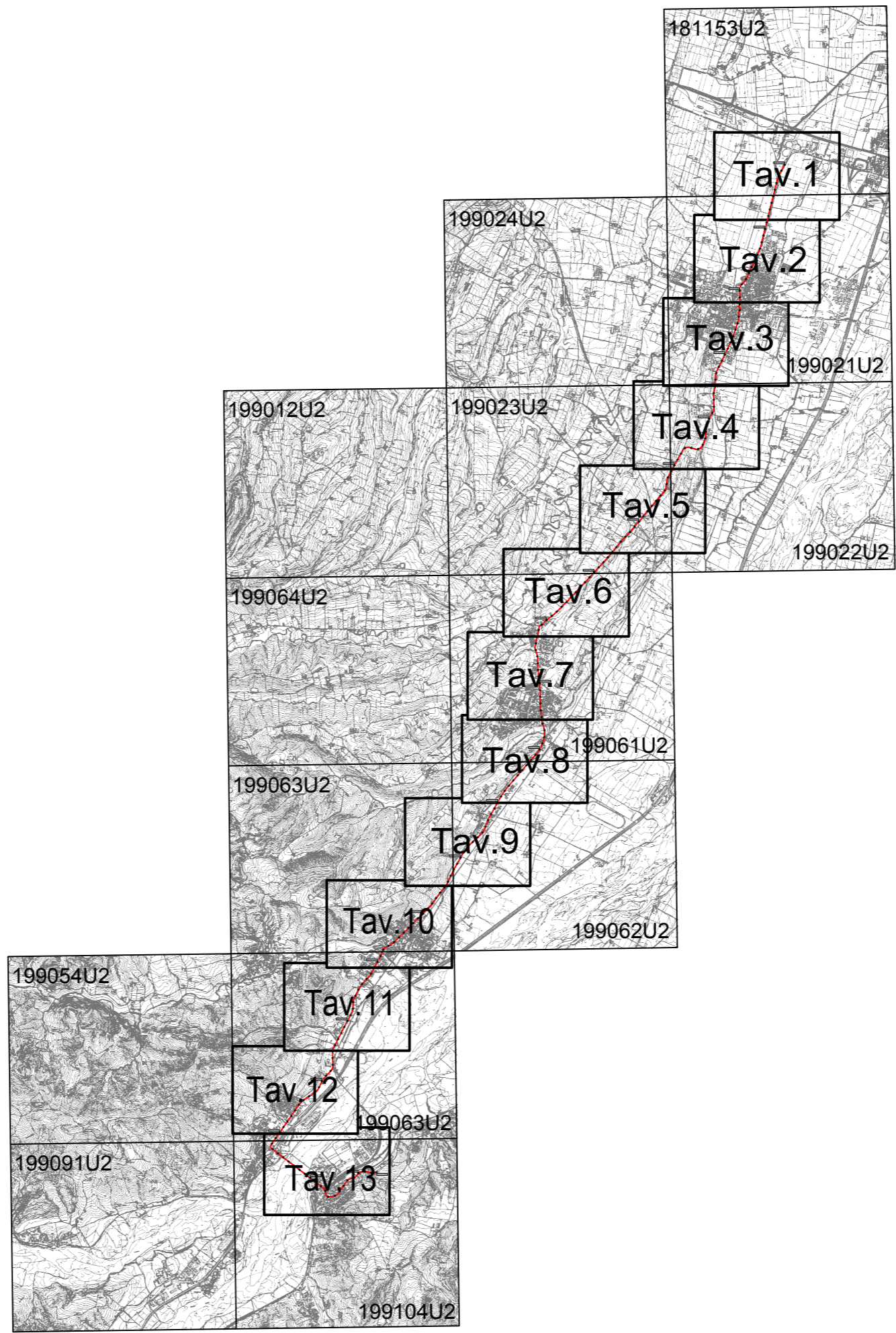
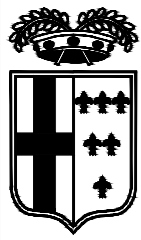
SCALA	DATA
-	<b>GENNAIO 2021</b>

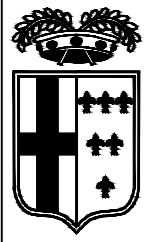
Il Responsabile del Servizio  
Ing. Gianpaolo Monteverdi

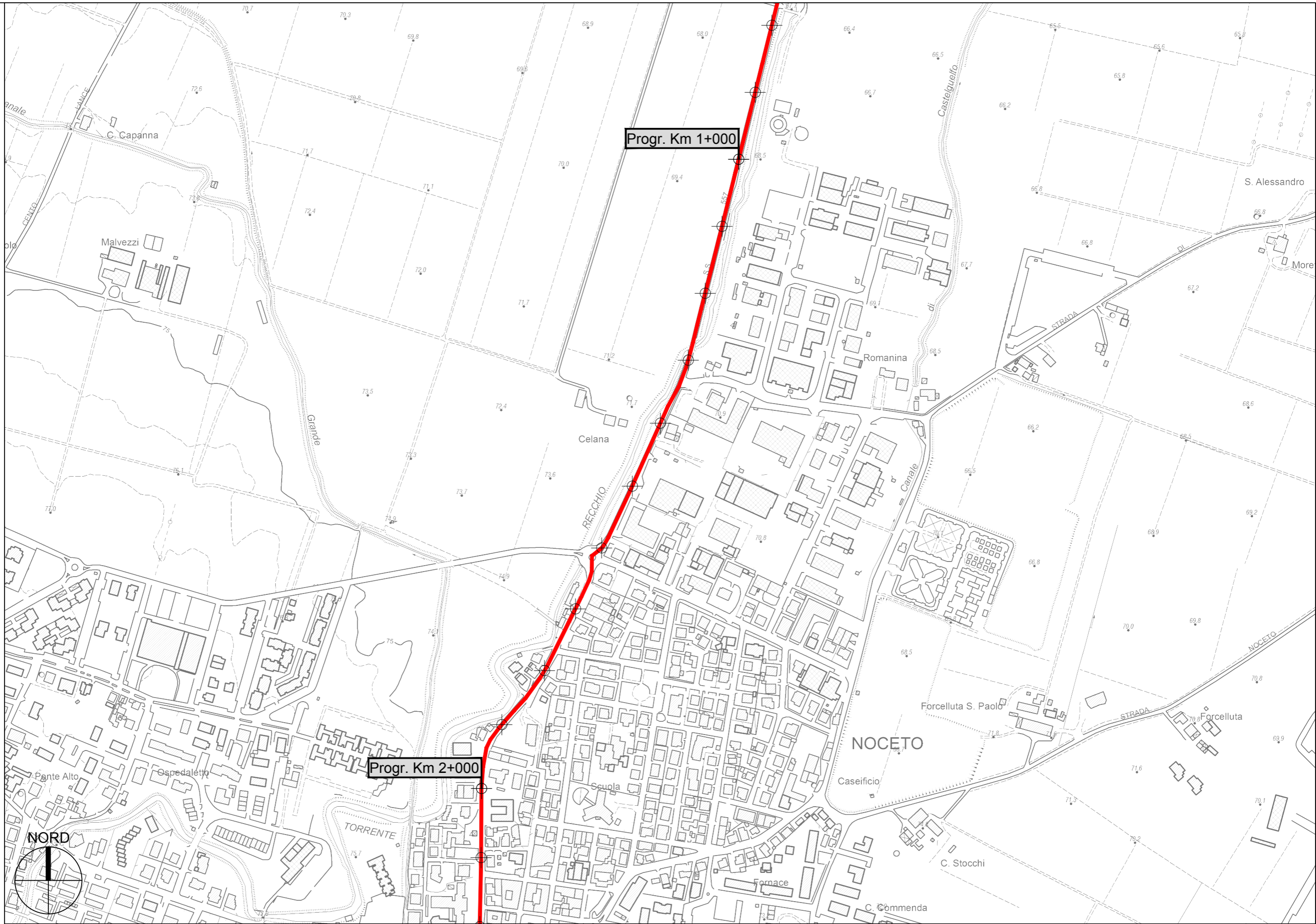
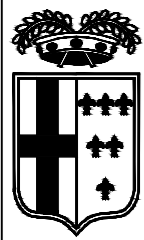
Il Responsabile del Procedimento  
Arch. Gloria Resteghini

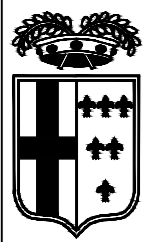
Il Progettista  
Geom. Antonio Mesti

Il Coordinatore  
Geom. Antonio Mesti

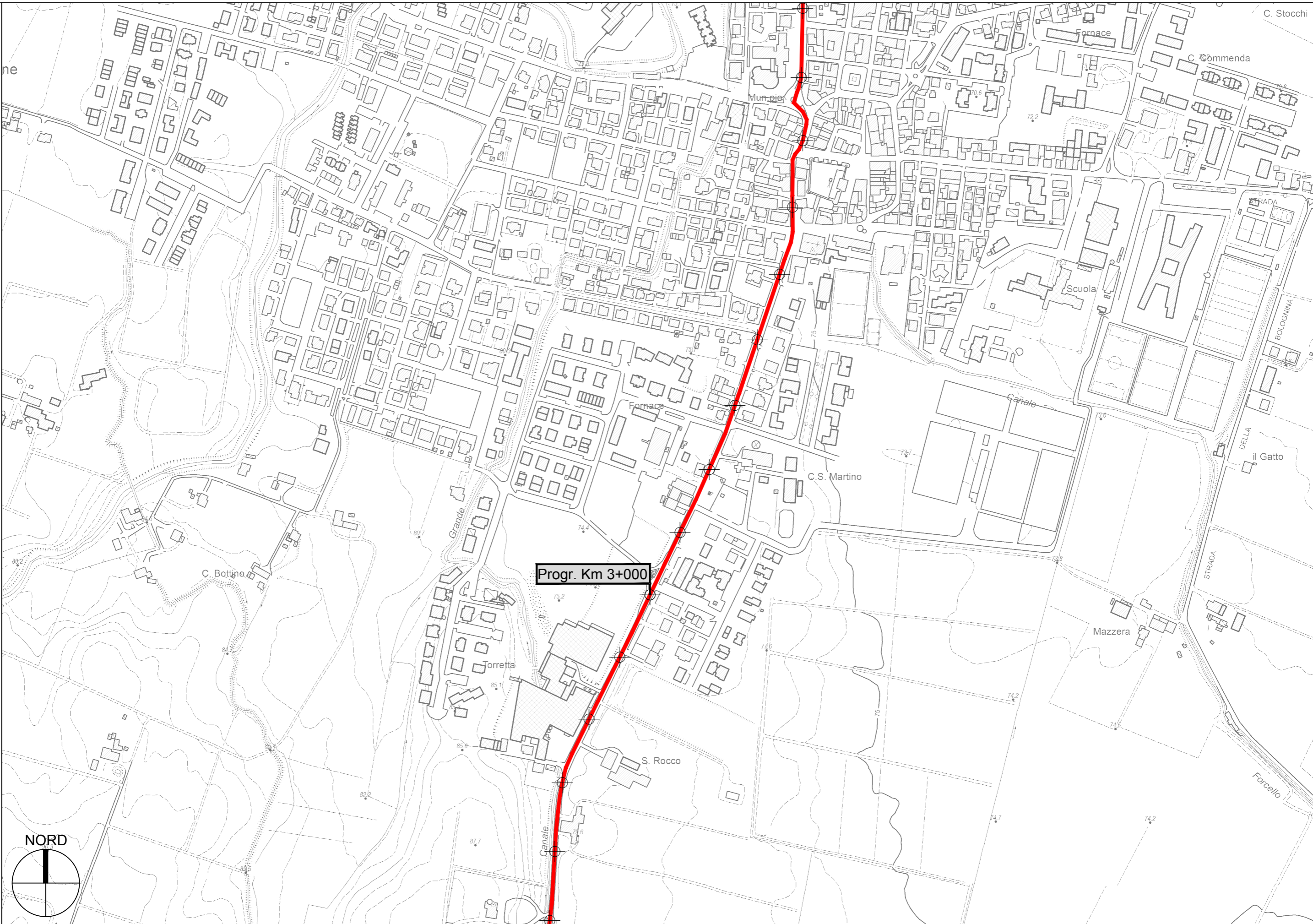






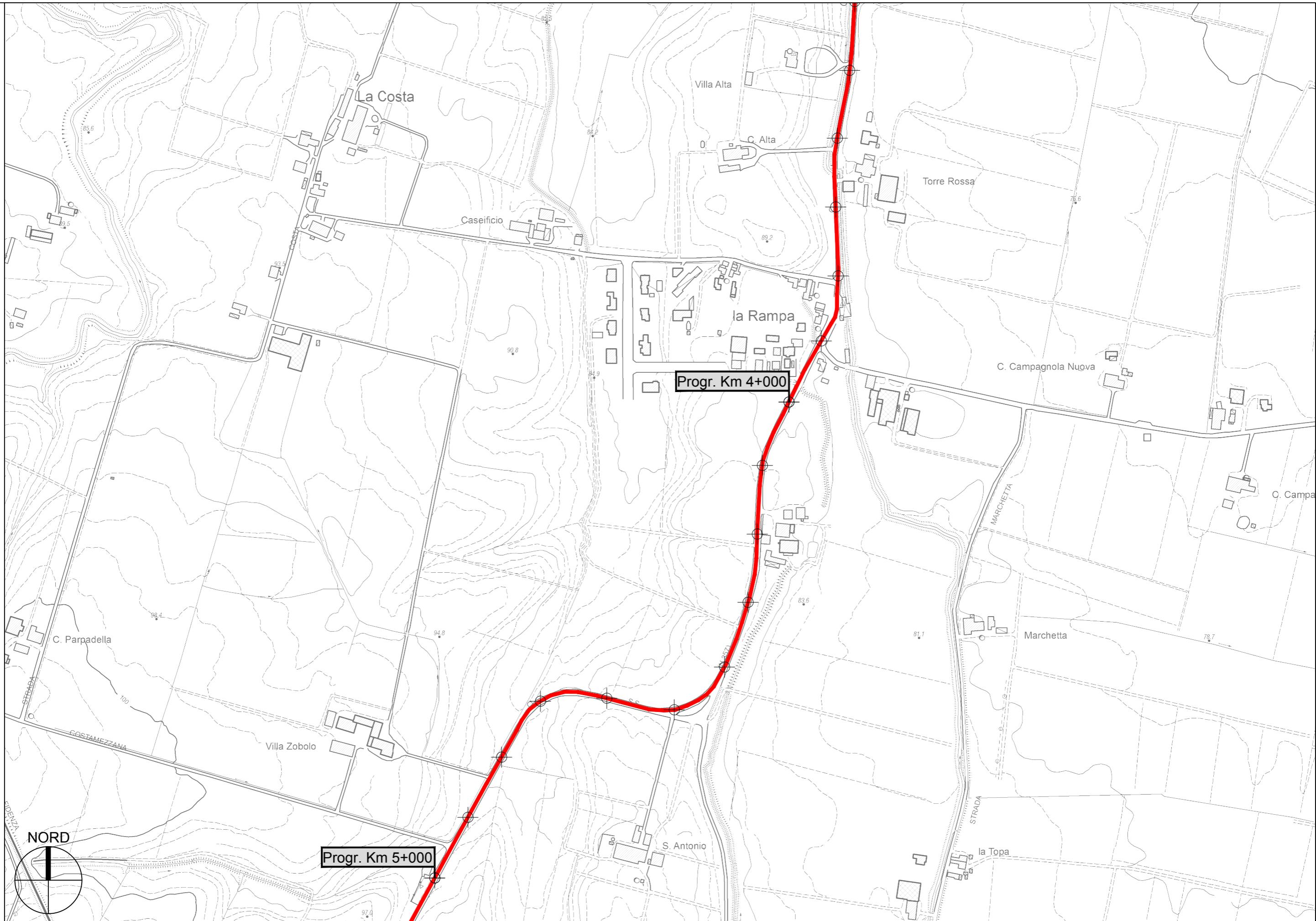
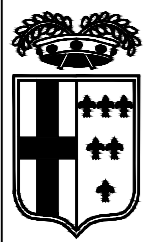


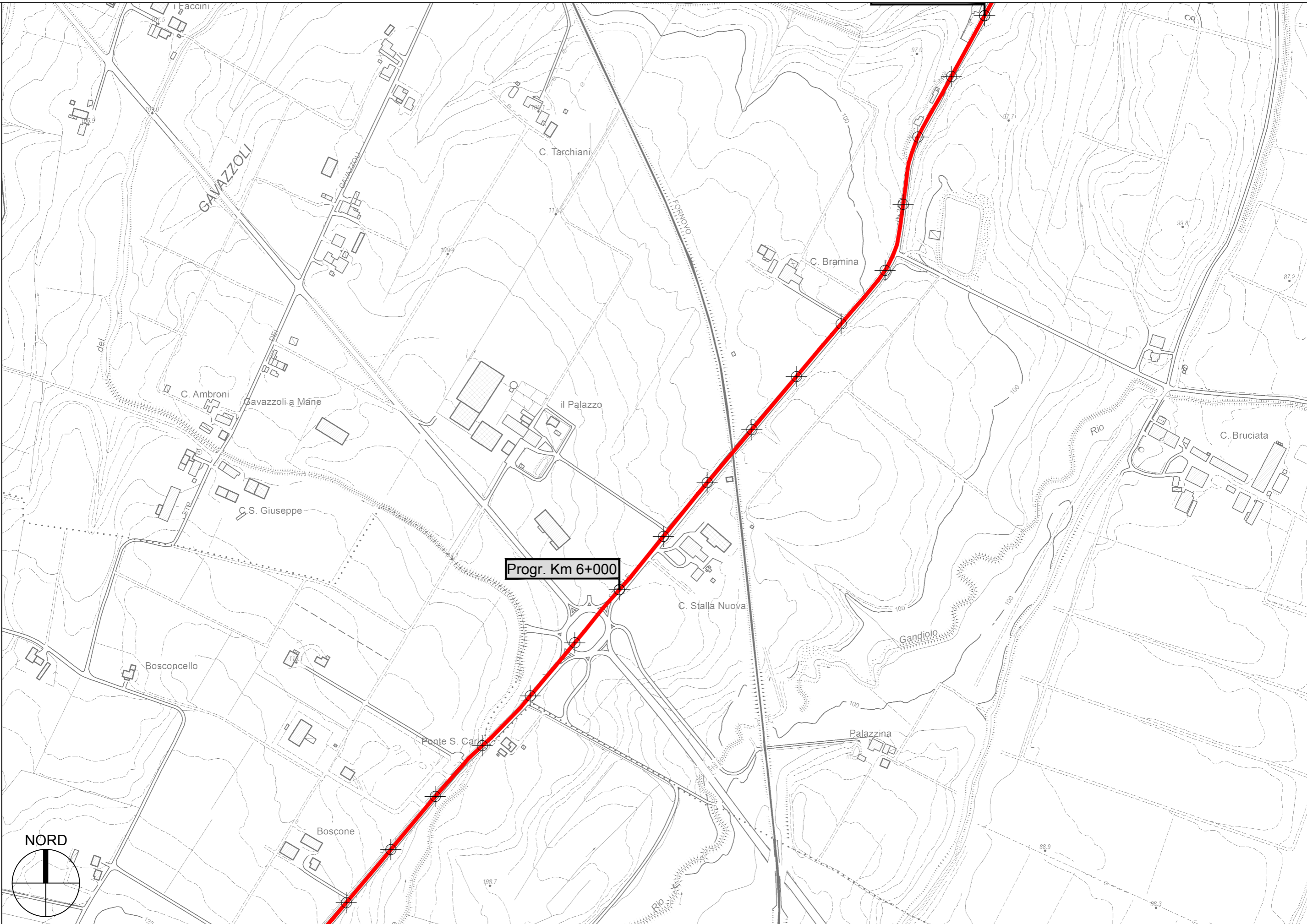
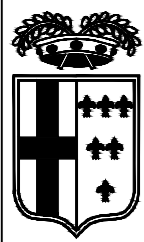
PROVINCIA DI PARMA - Servizio Viabilità e Infrastrutture

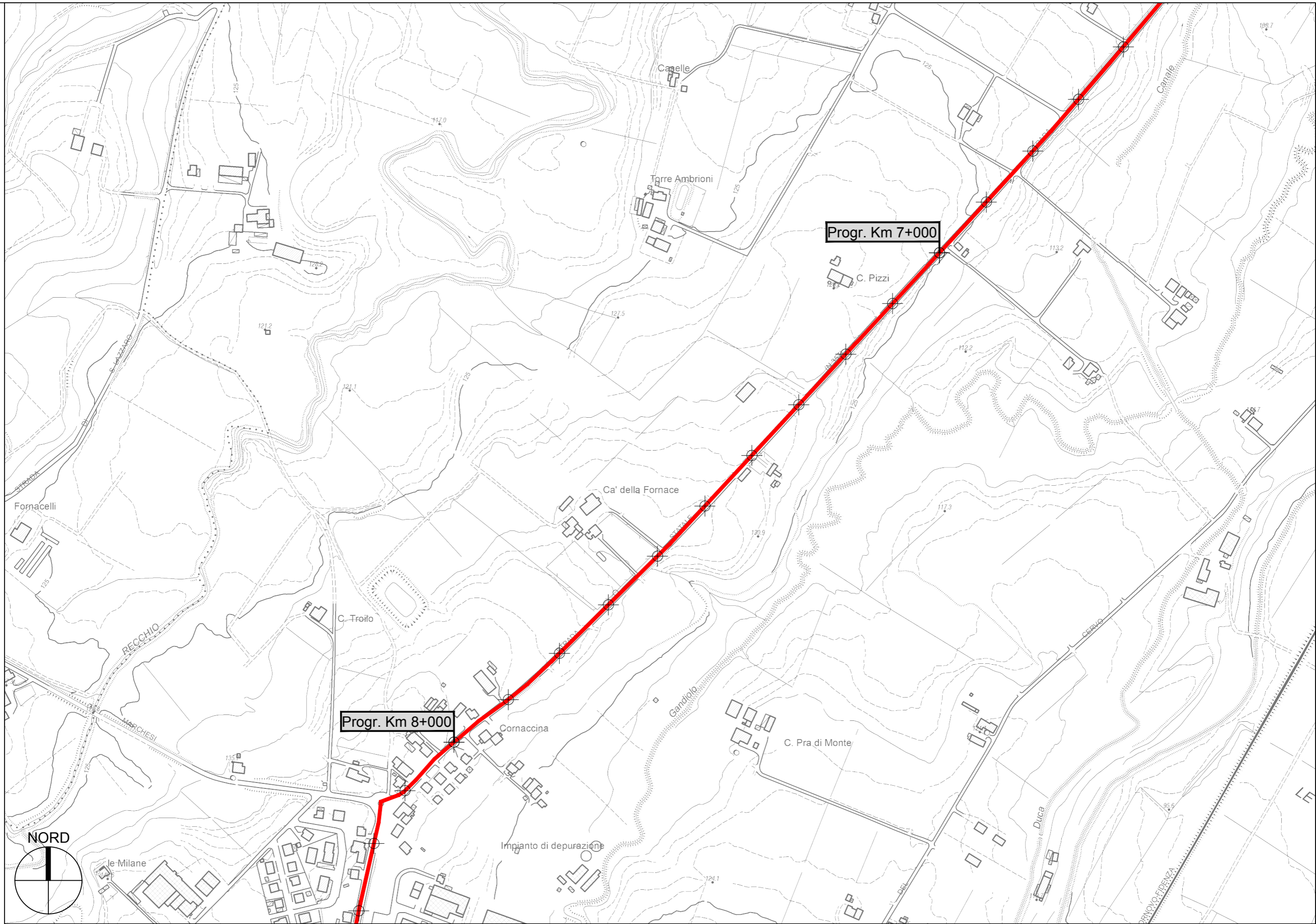
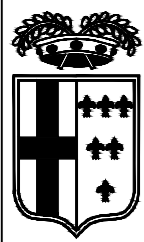


S.P. 357R di Fornovo - Sviluppo chilometrico 19+279 km

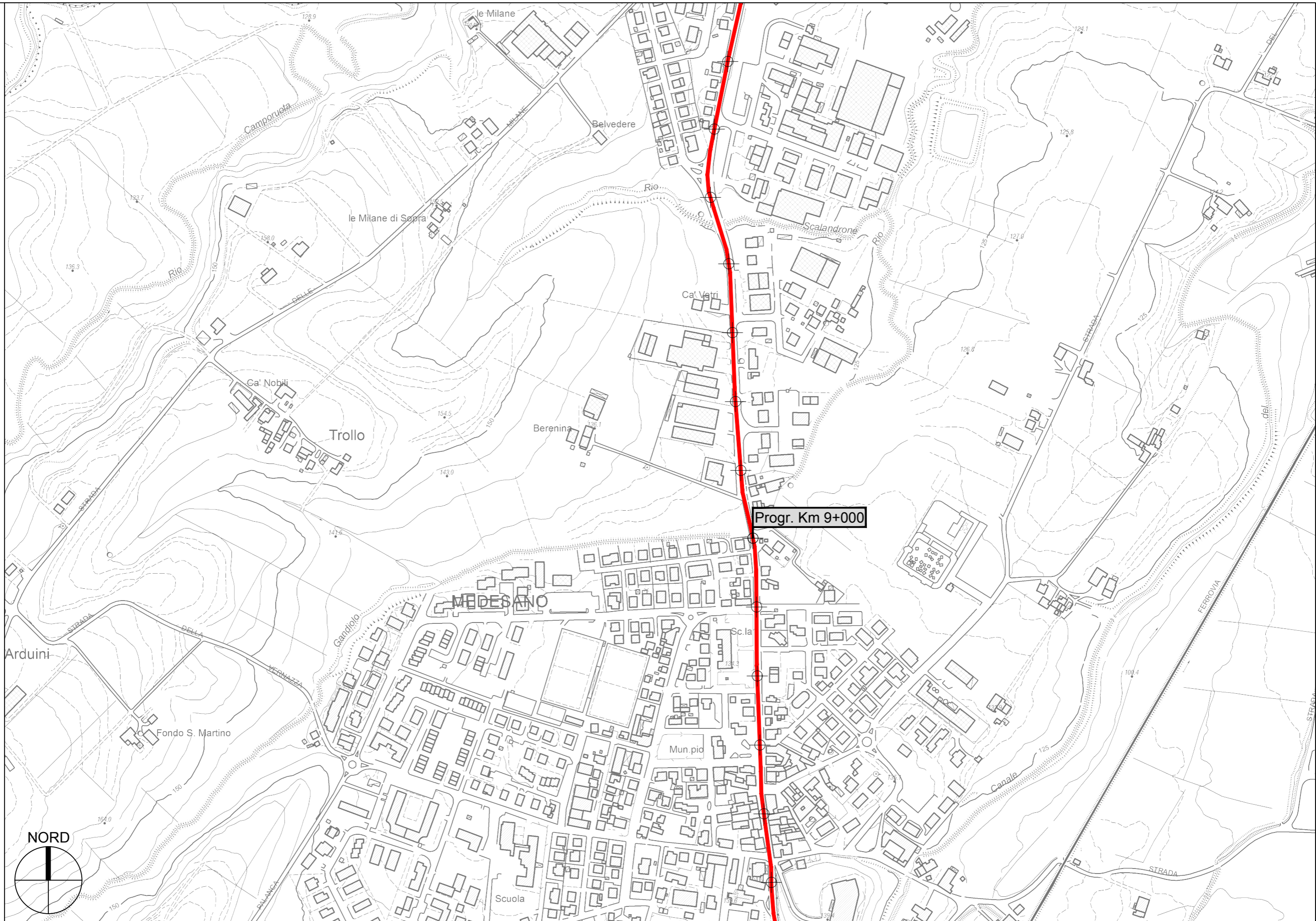
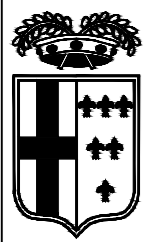
Tavola 3 di 13 - Scala 1 : 5.000

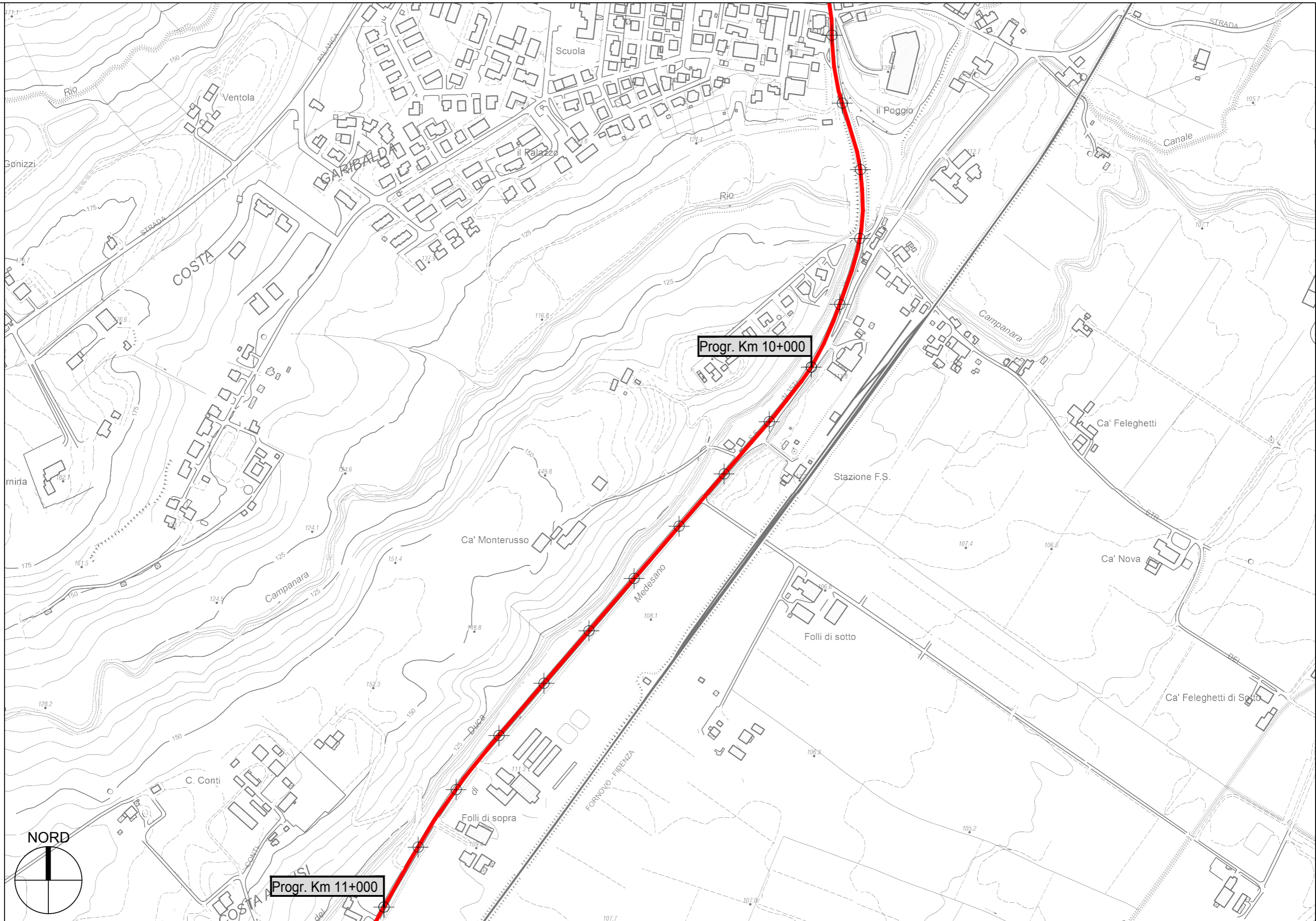
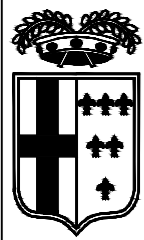


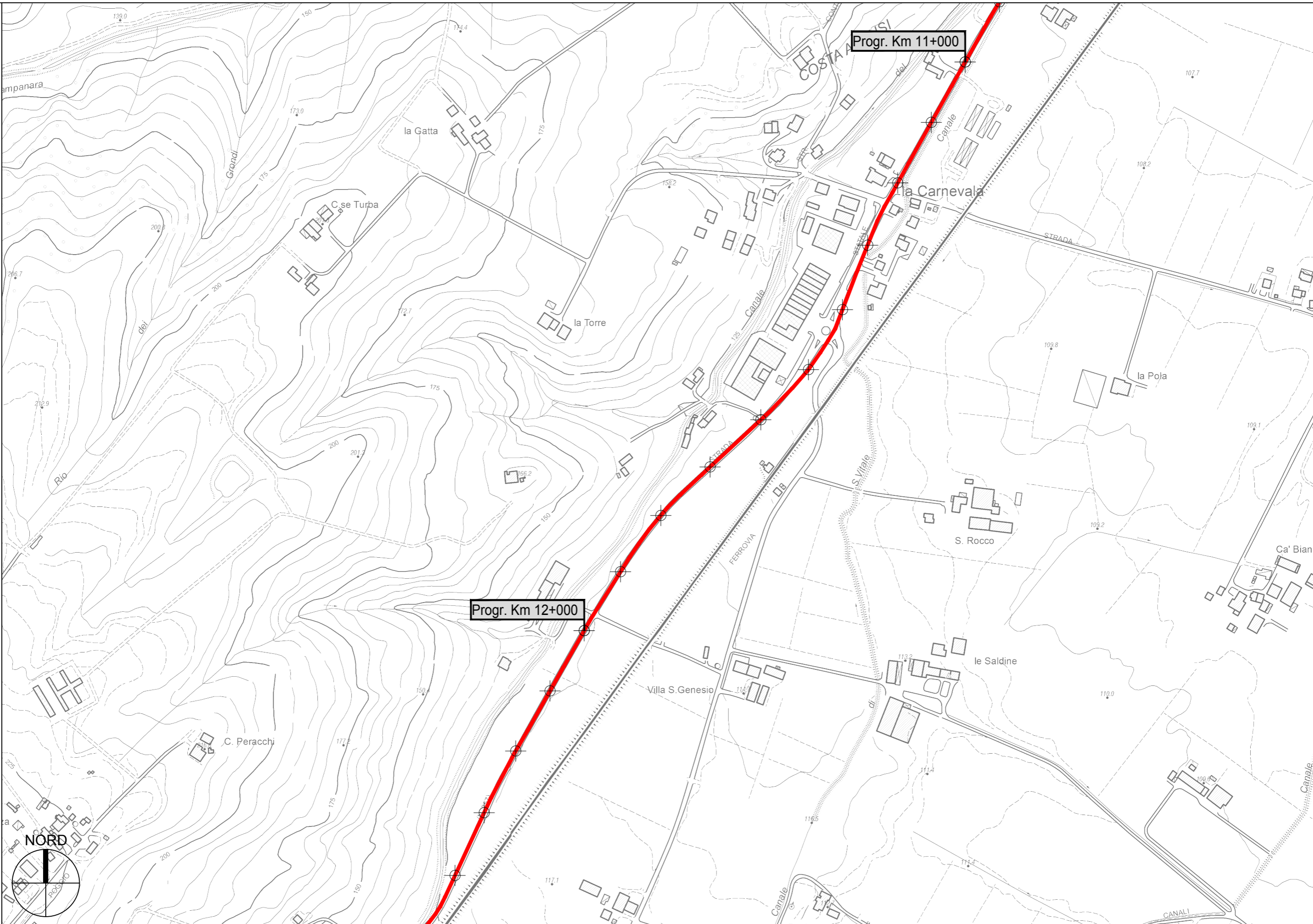
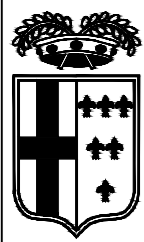








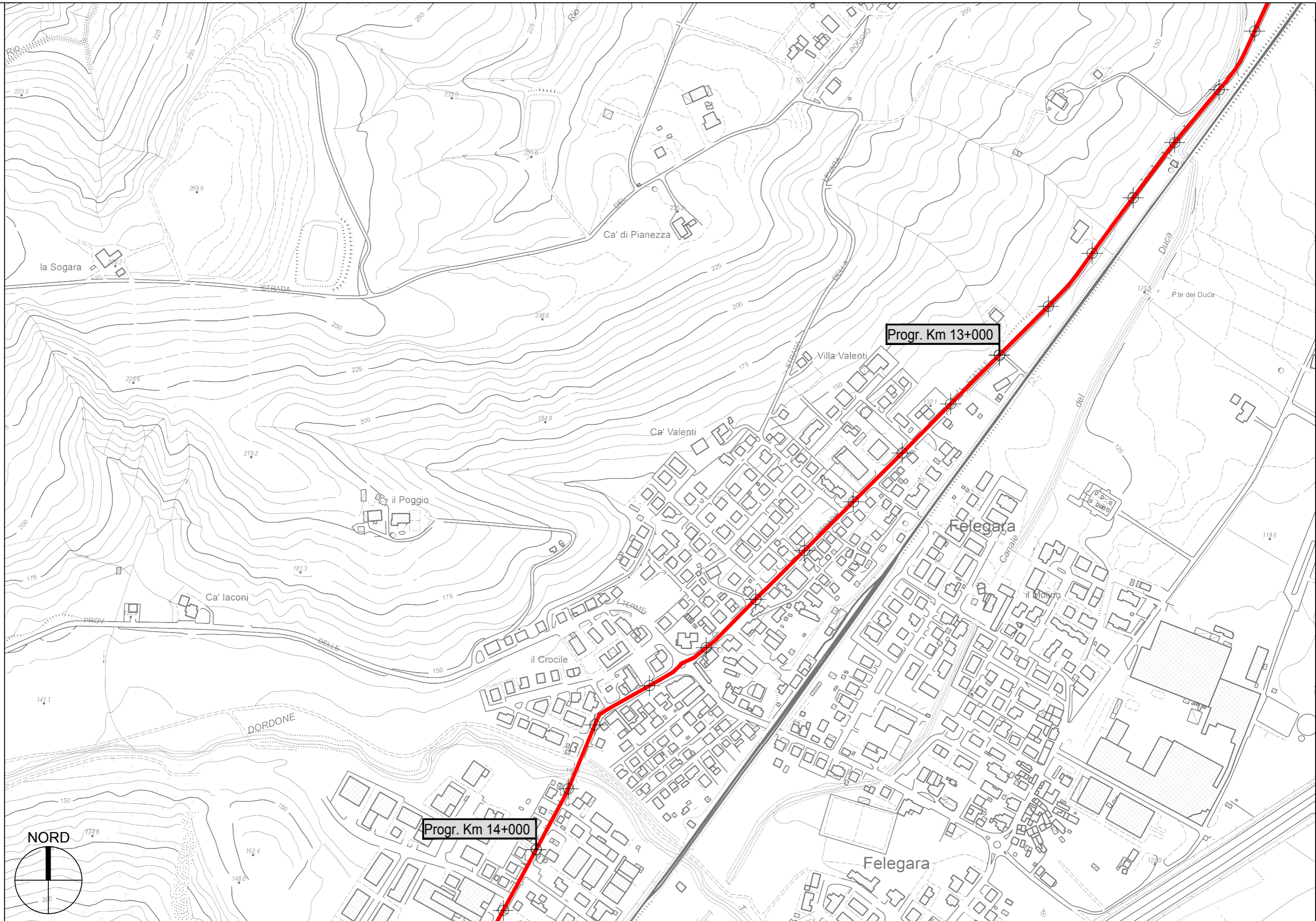
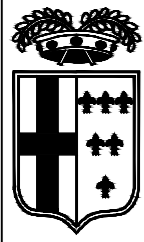


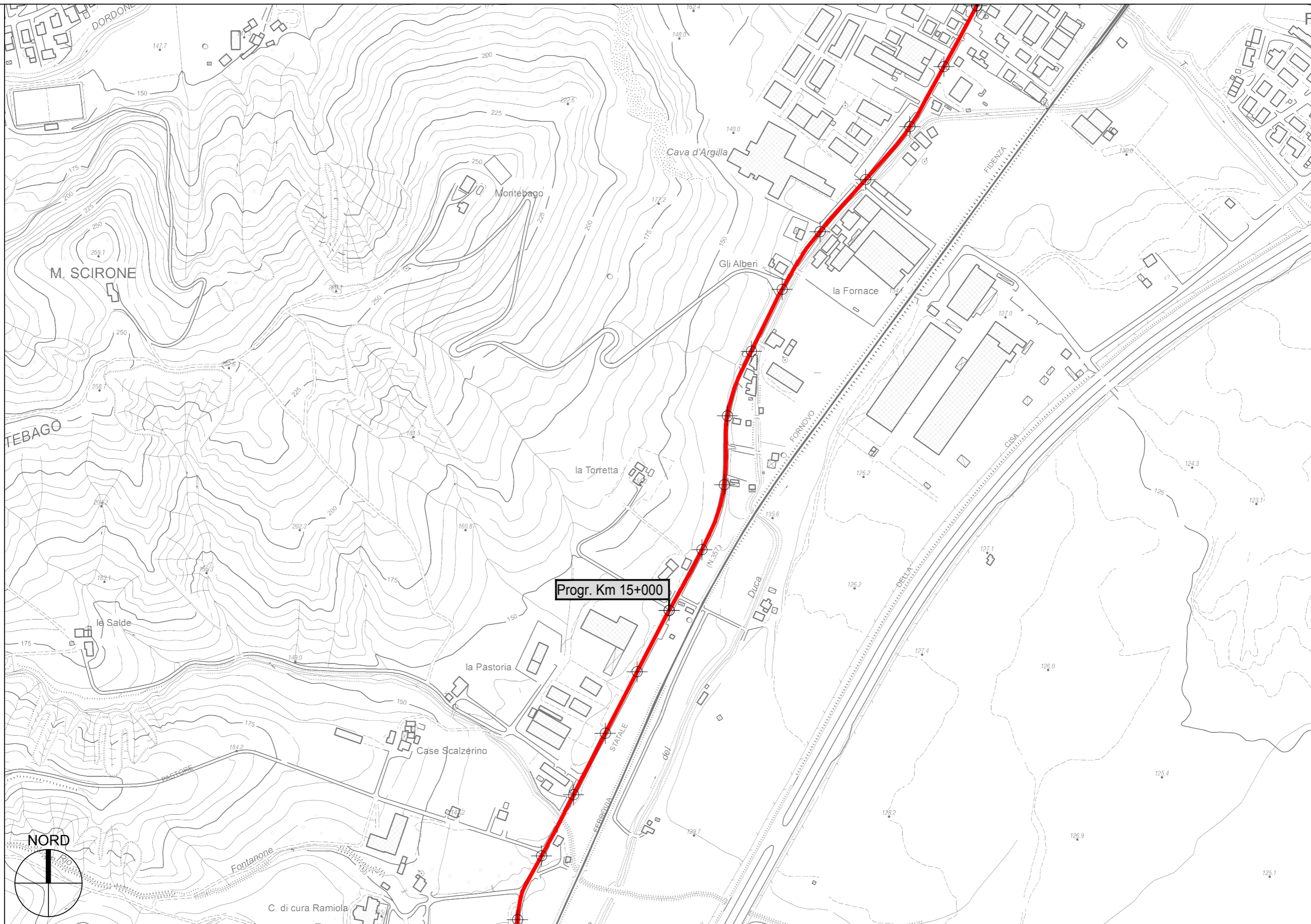
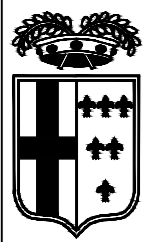


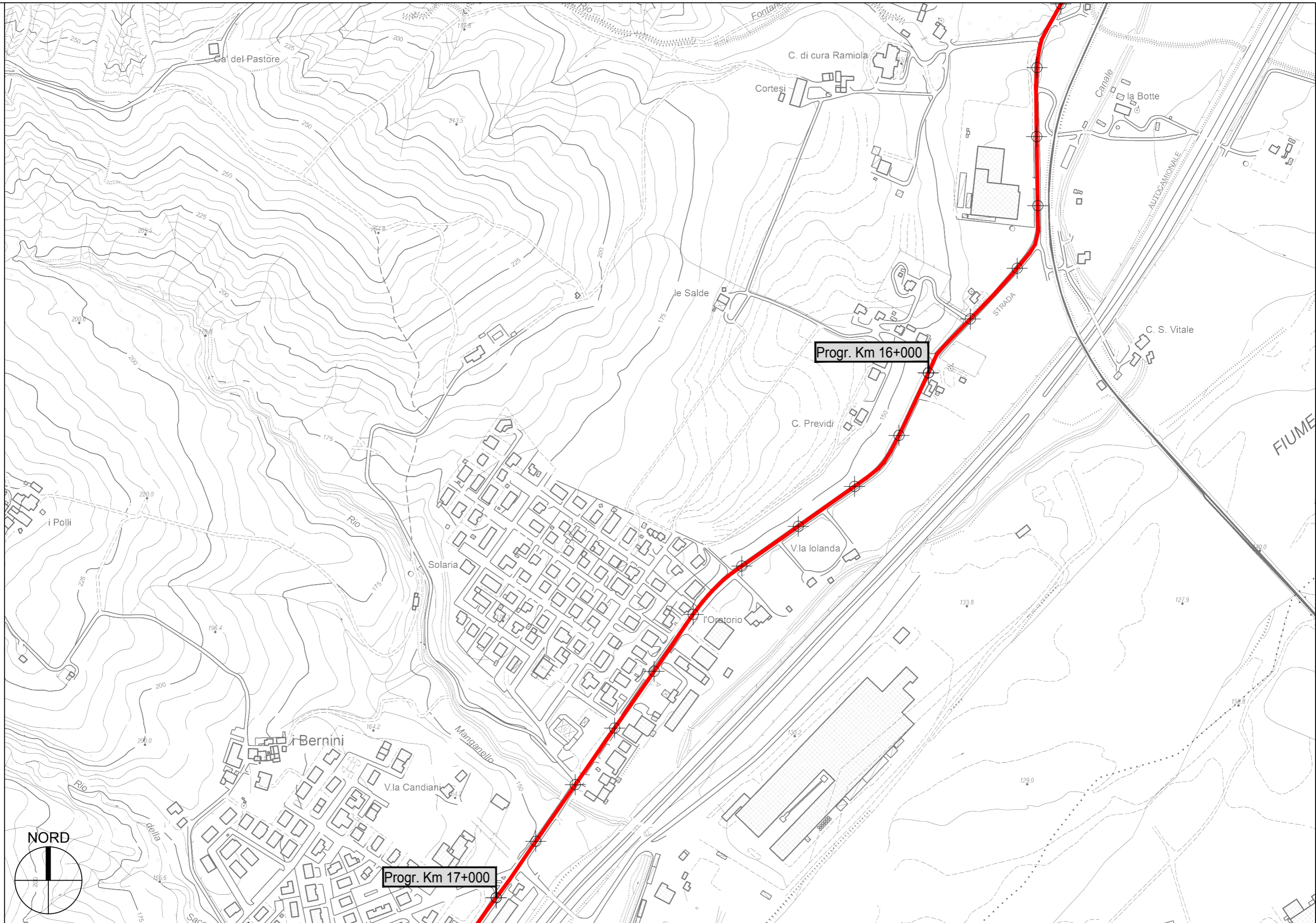
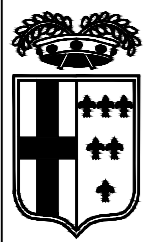
Progr. Km 11+000

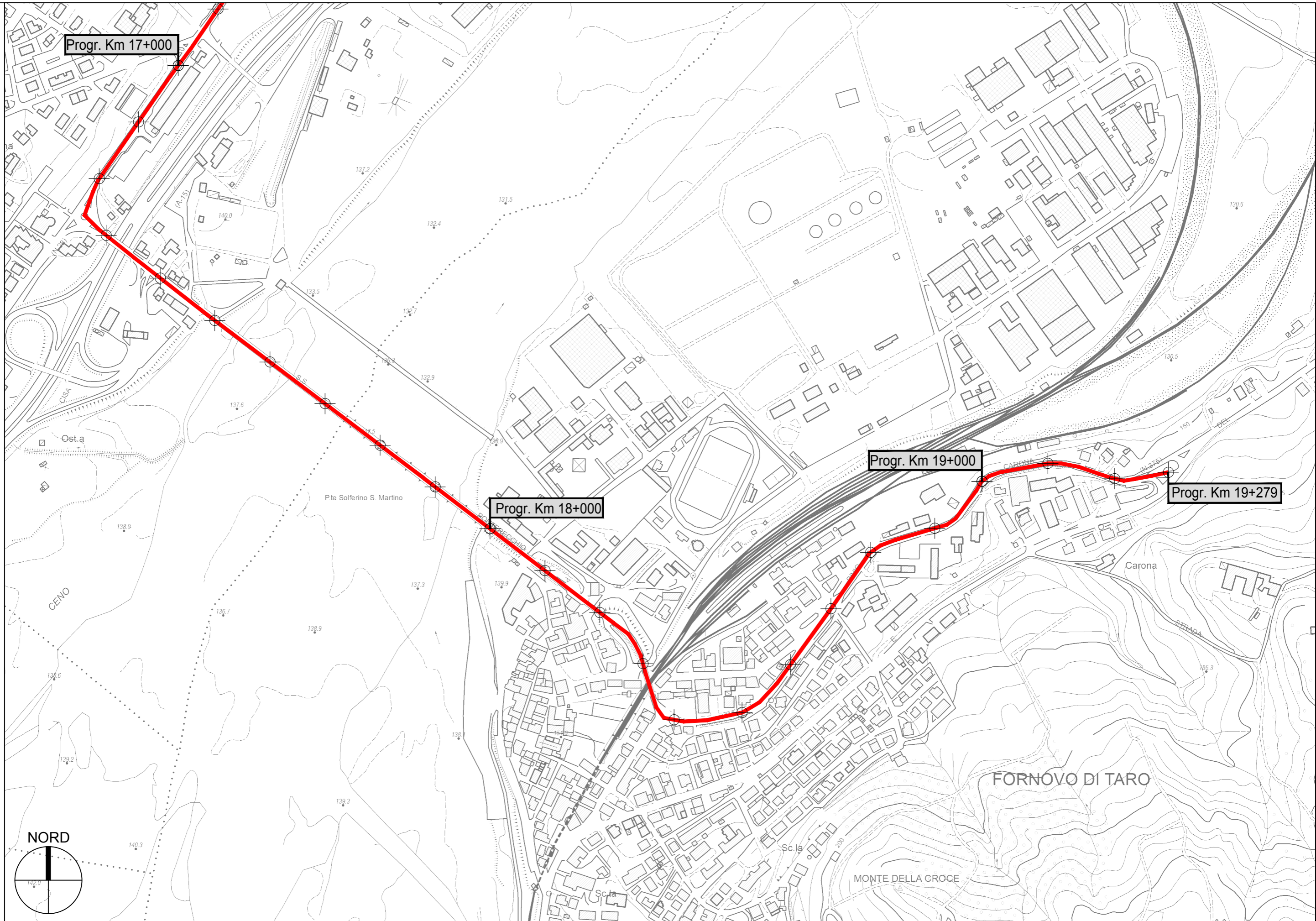
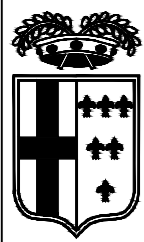
Progr. Km 12+000











Progr. Km 17+000

Progr. Km 18+000

Progr. Km 19+000

Progr. Km 19+279

