



PROVINCIA DI PARMA
SERVIZIO VIABILITA' E INFRASTRUTTURE
- TRASPORTI ECCEZIONALI - ESPROPRI - EDILIZIA SCOLASTICA -
MANUTENZIONE DEL PATRIMONIO

**RIPRISTINO, CONSOLIDAMENTO E MESSA IN SICUREZZA
DELLE STRADE PROVINCIALI CON FINANZIAMENTO STATALE
(MINISTERO INFRASTRUTTURE E TRASPORTI - D.M. 49/2018):
SETTORE PEDEMONTANA. ANNO 2021.**



PROGETTO DEFINITIVO-ESECUTIVO

DESCRIZIONE	ELABORATO
PLANIMETRIE: TRATTI DI INTERVENTO	7

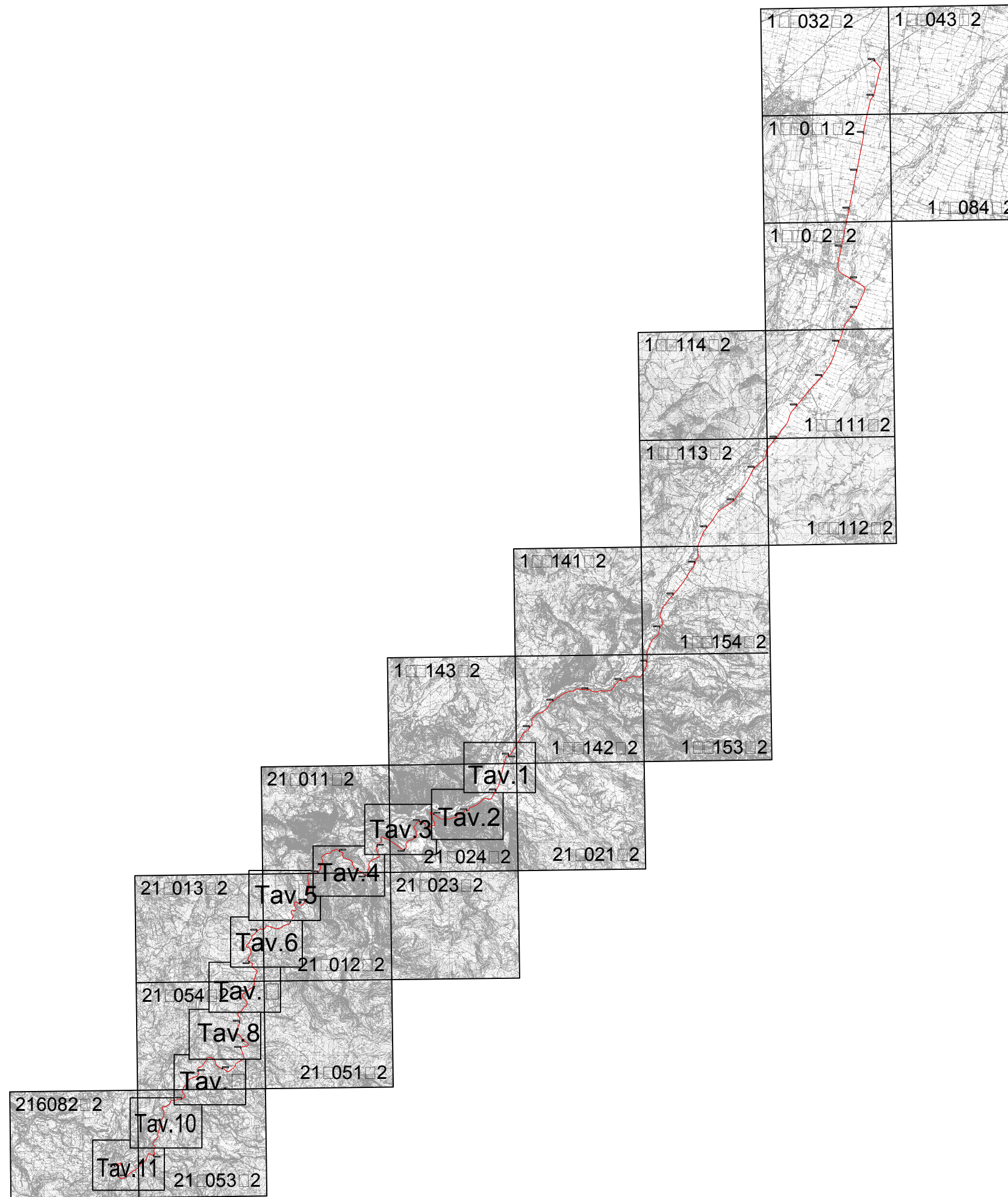
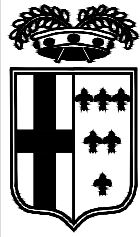
SCALA	DATA
-	GENNAIO 2021

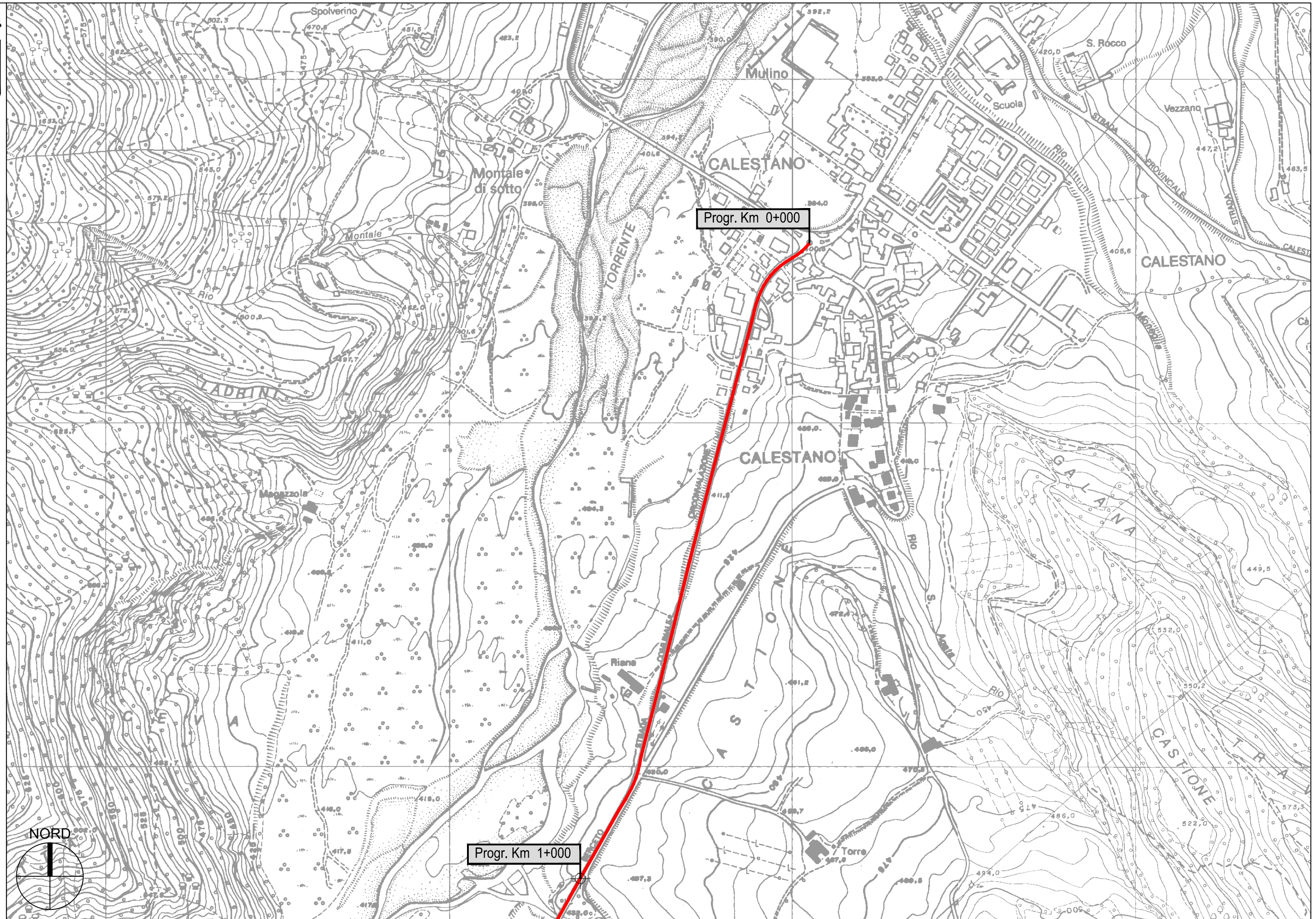
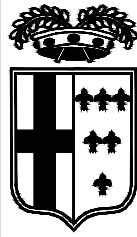
Il Responsabile del Servizio
Ing. Gianpaolo Monteverdi

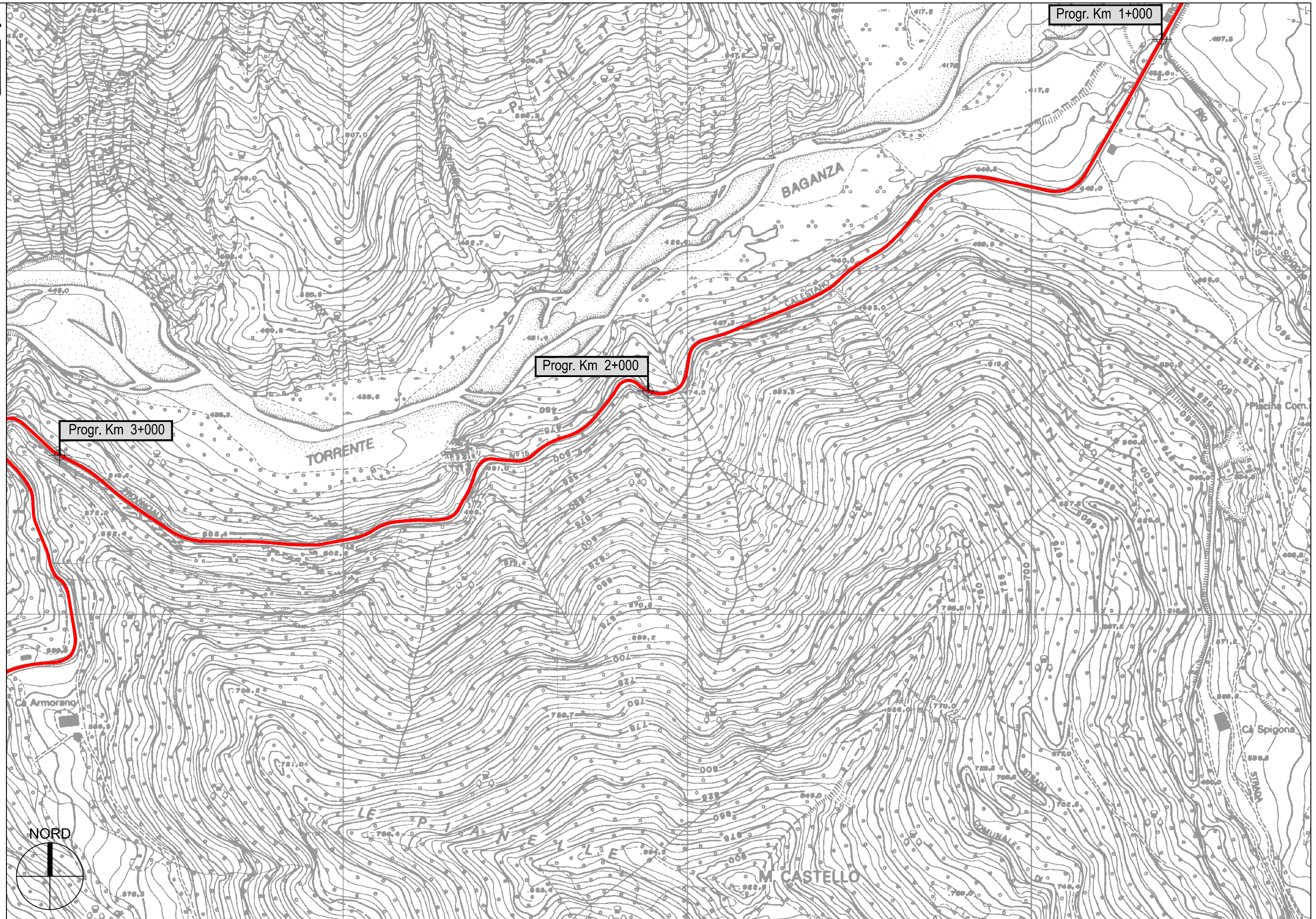
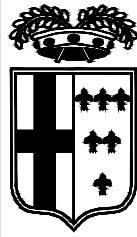
Il Responsabile del Procedimento
Arch. Gloria Resteghini

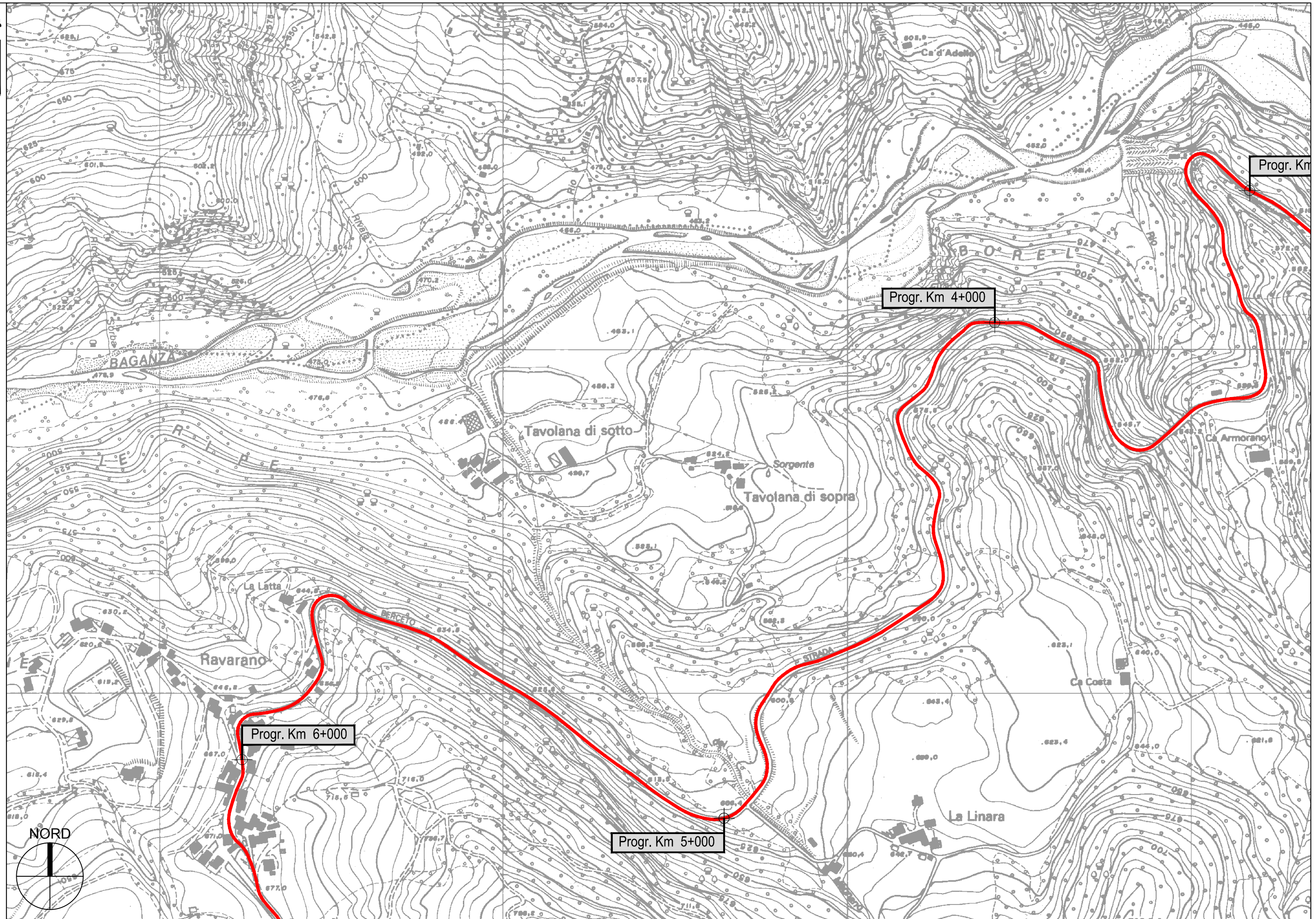
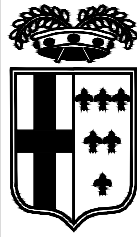
Il Progettista
Geom. Antonio Mesti

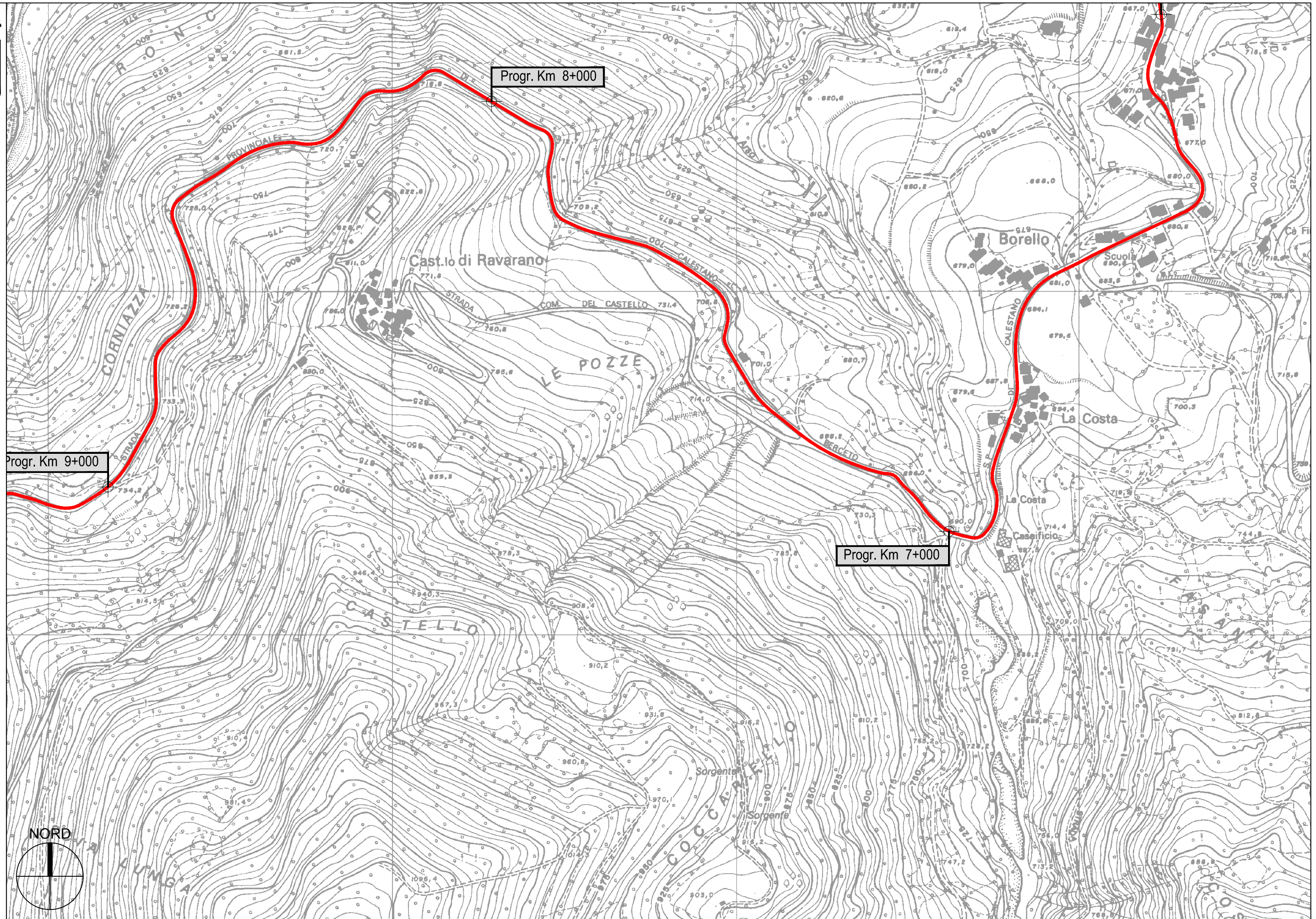
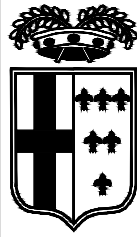
Il Coordinatore
Geom. Antonio Mesti

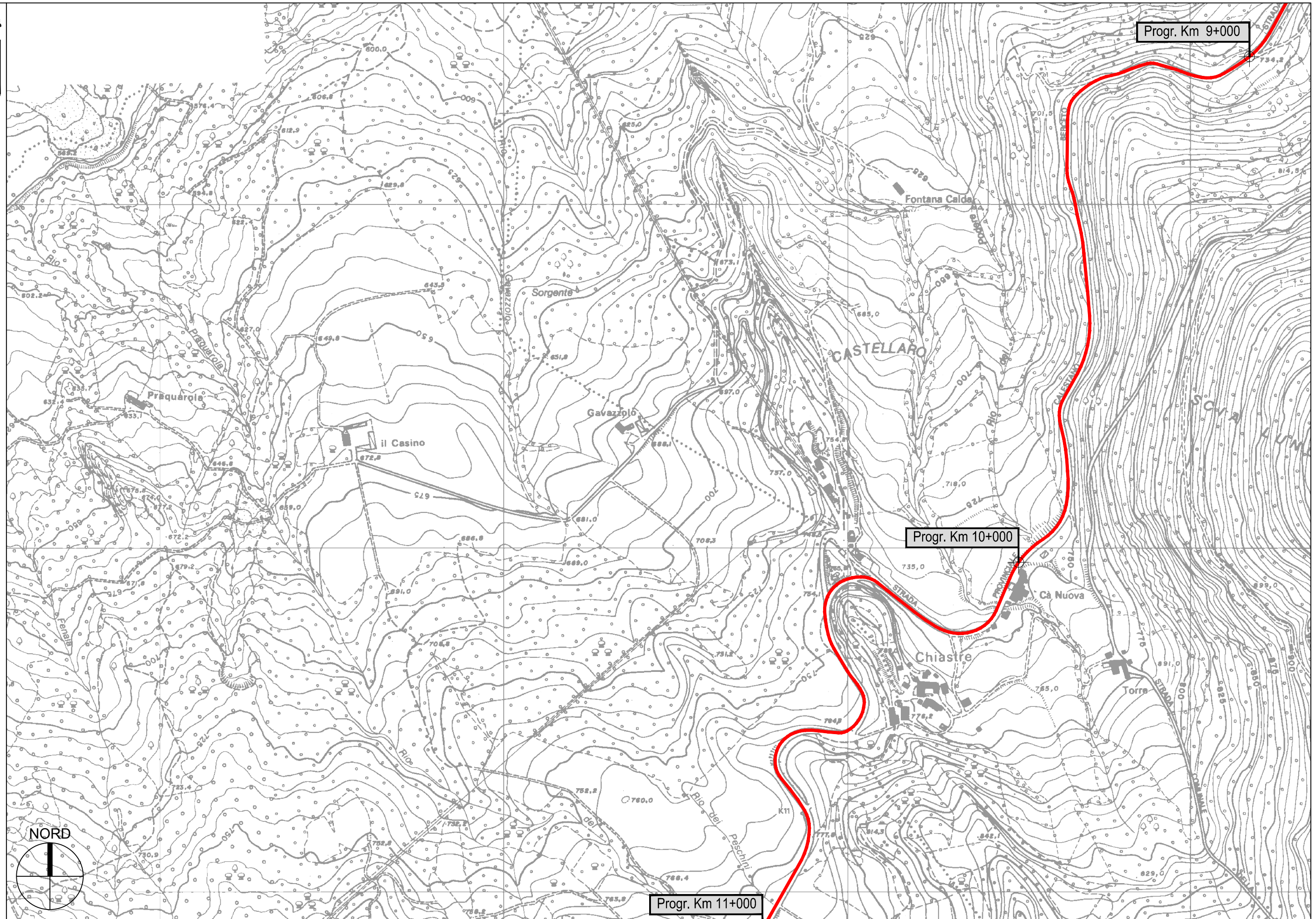
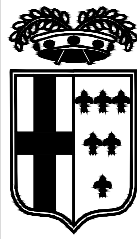


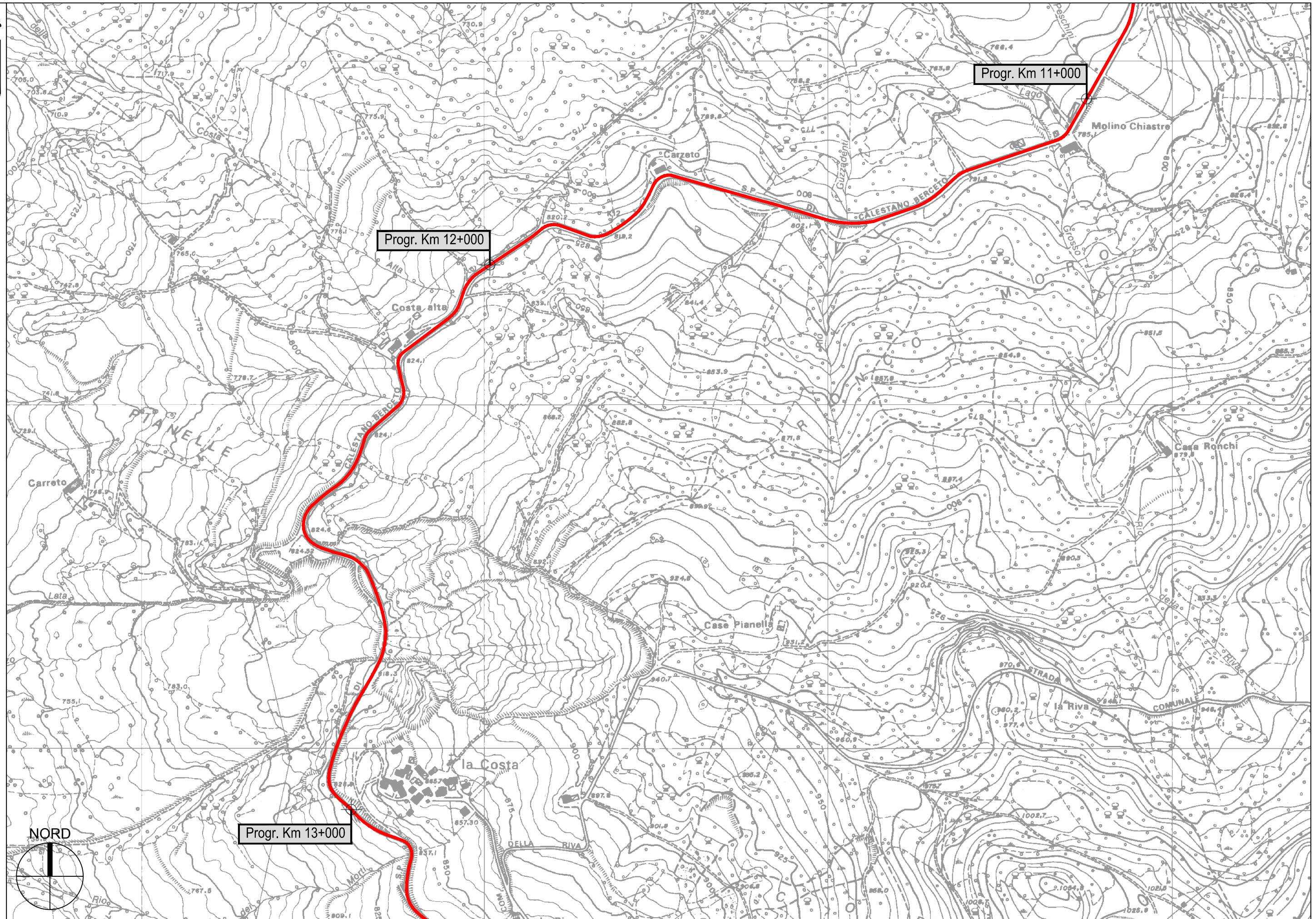
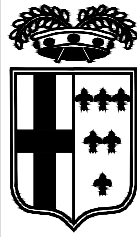


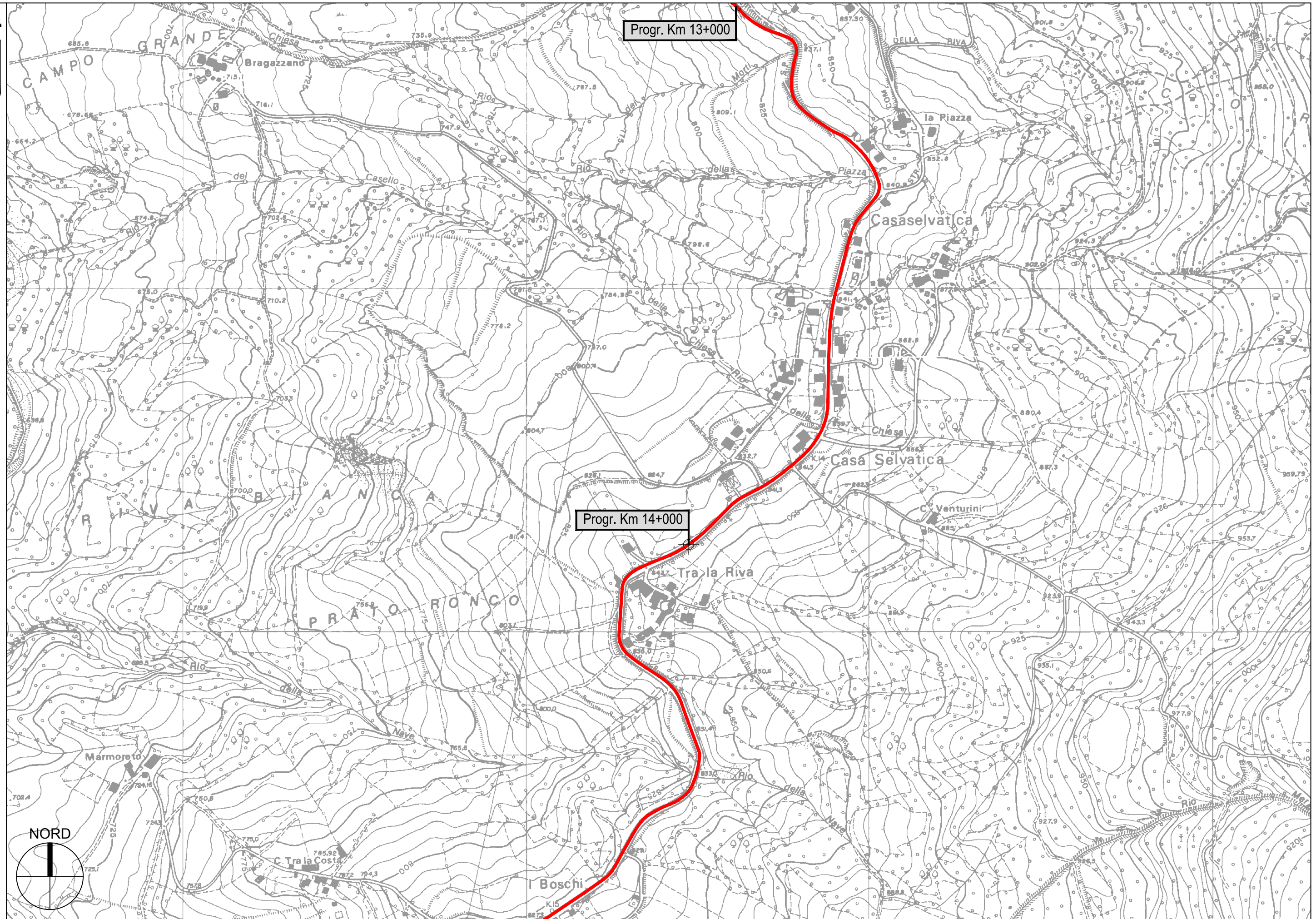
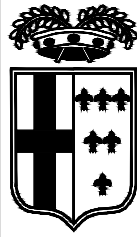


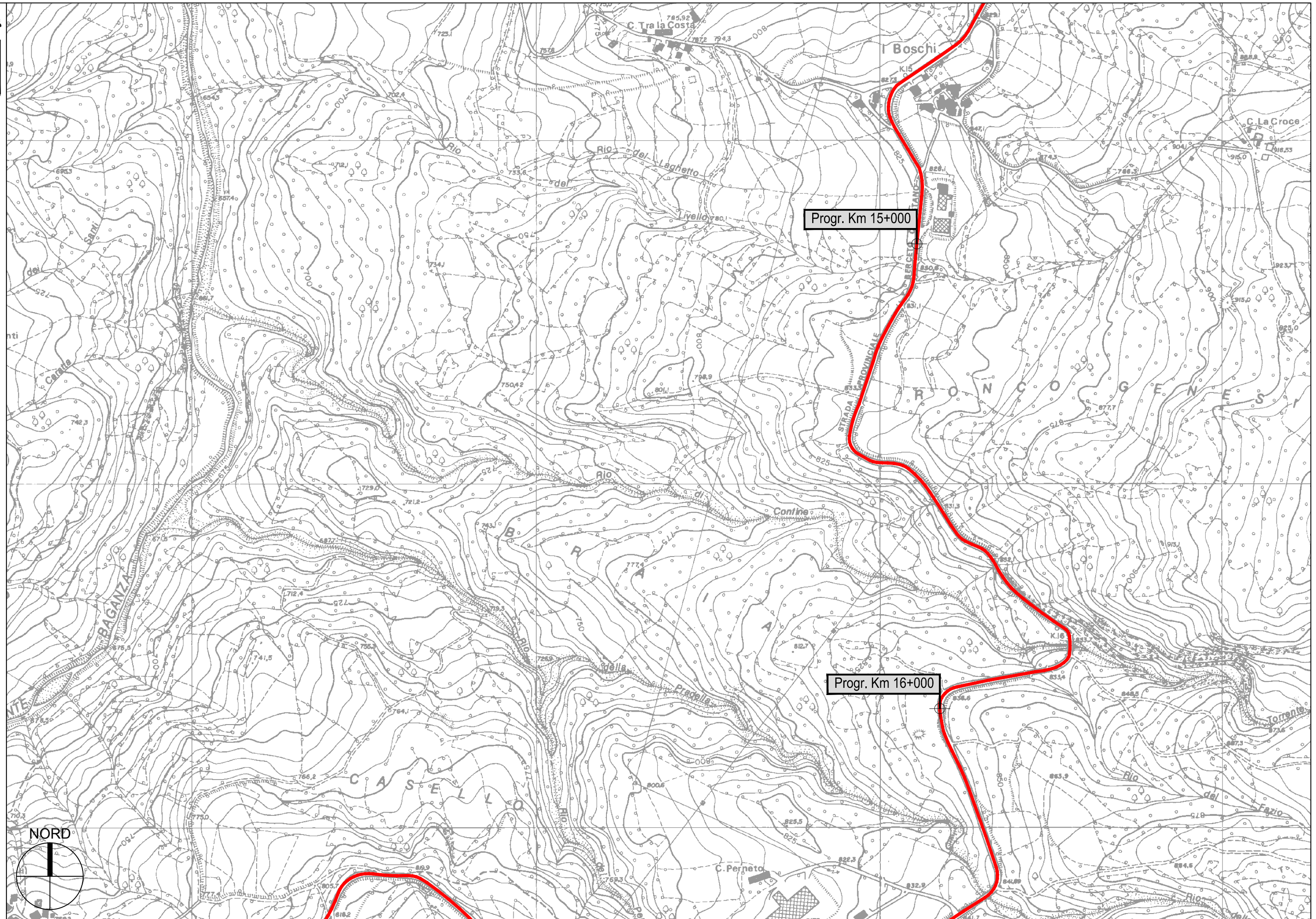
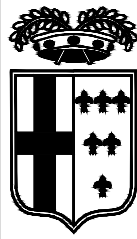


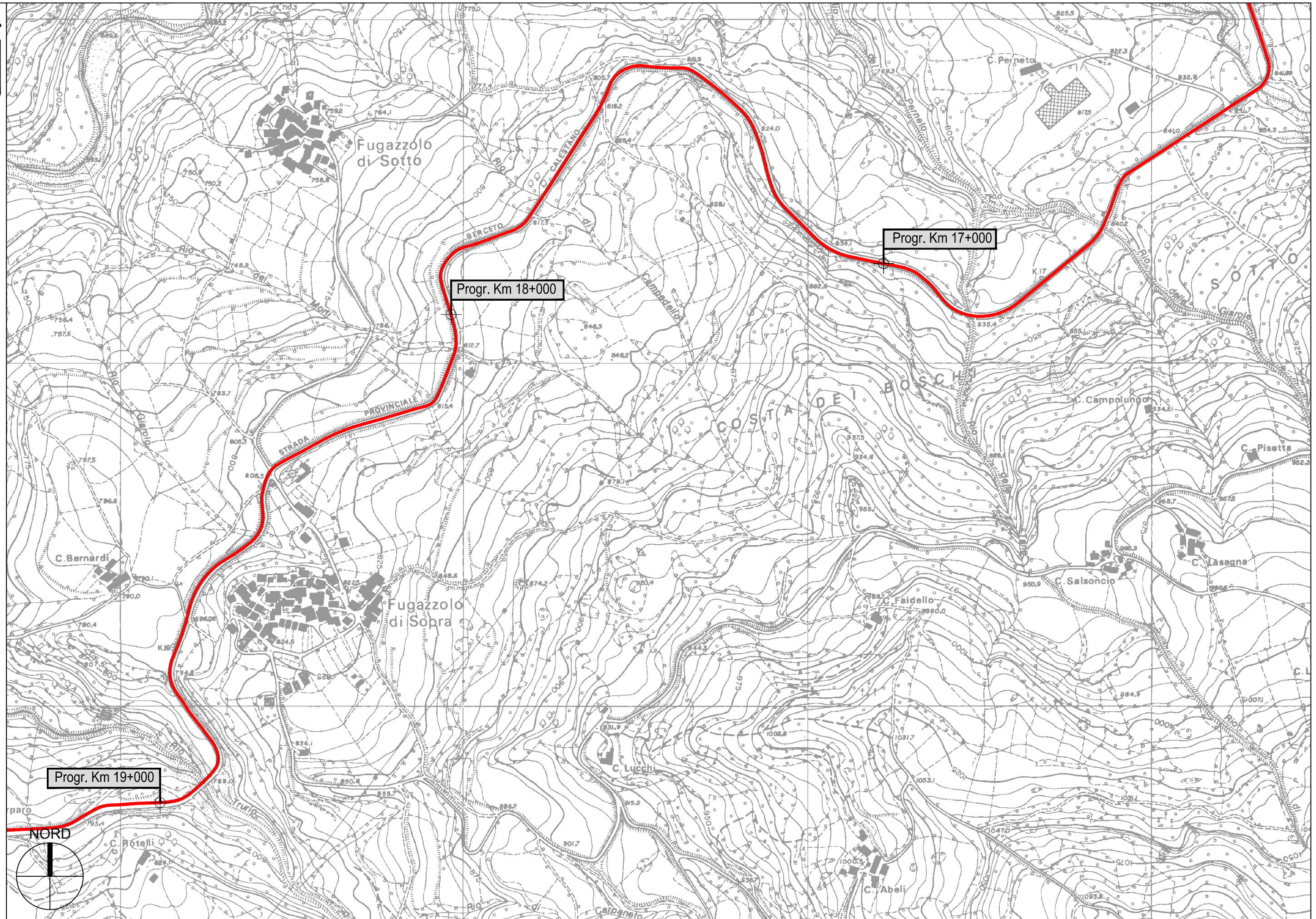
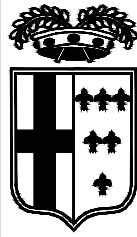


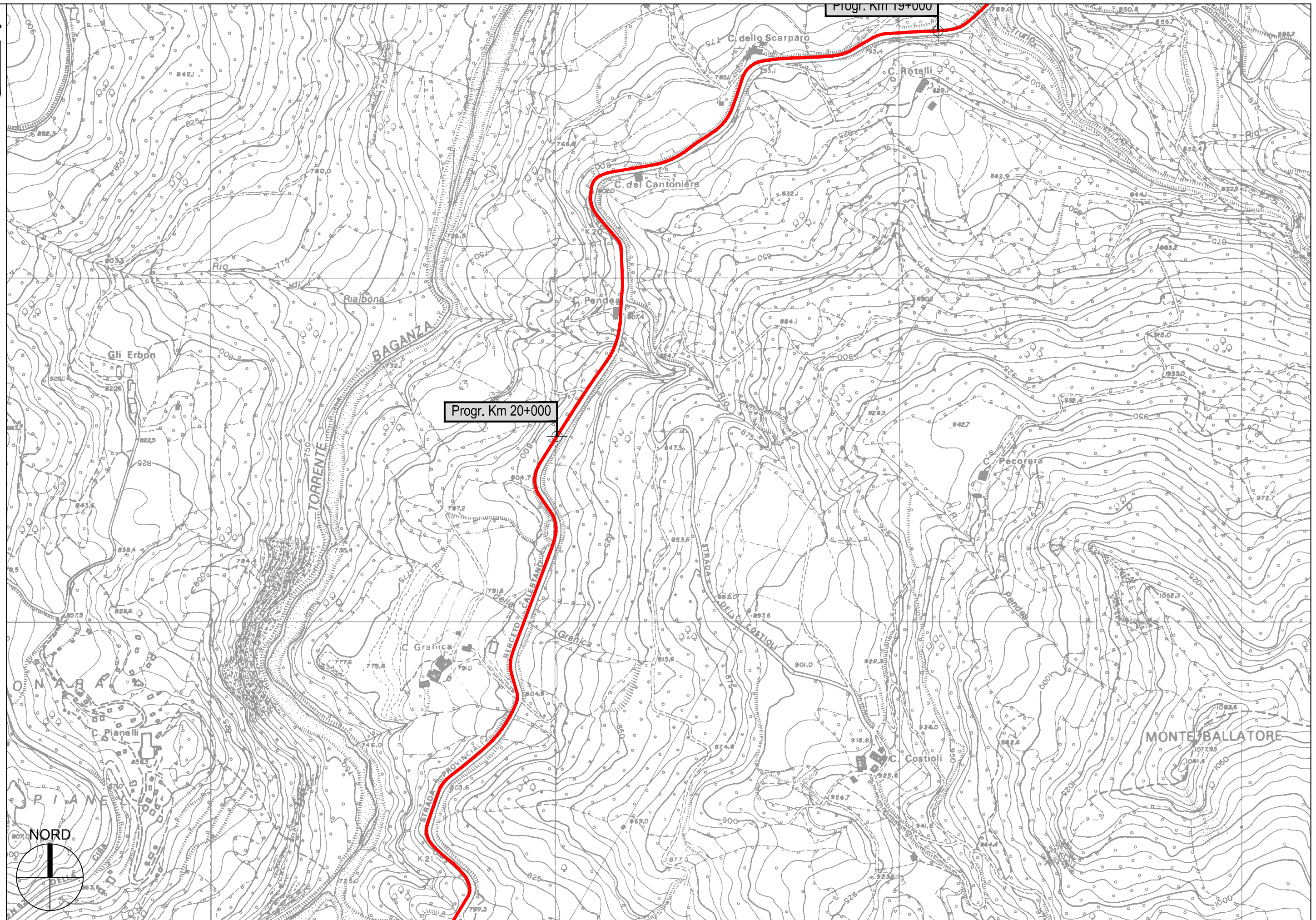
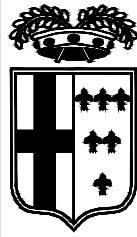


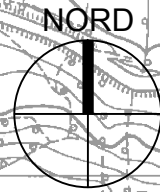
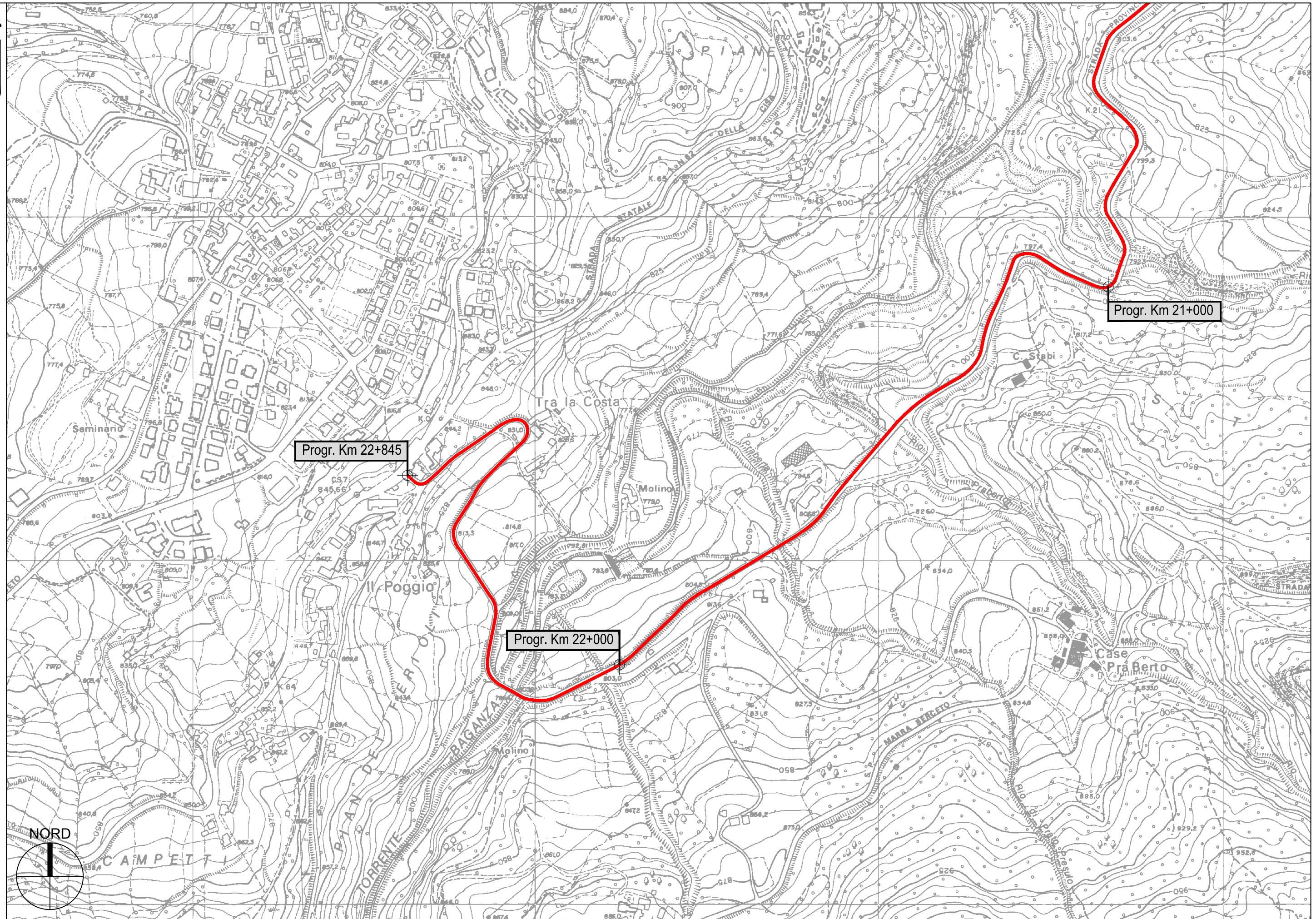
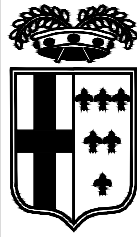


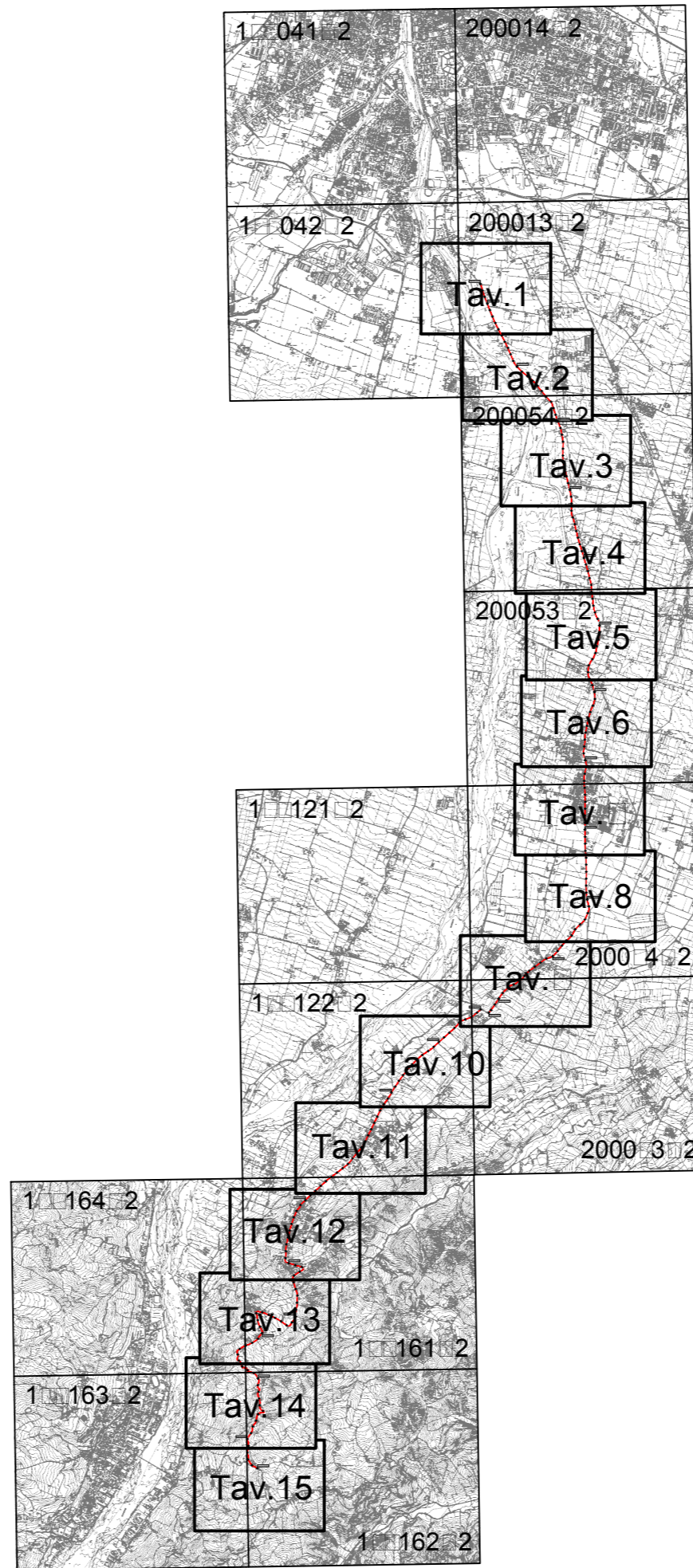
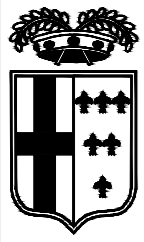


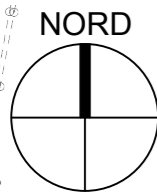
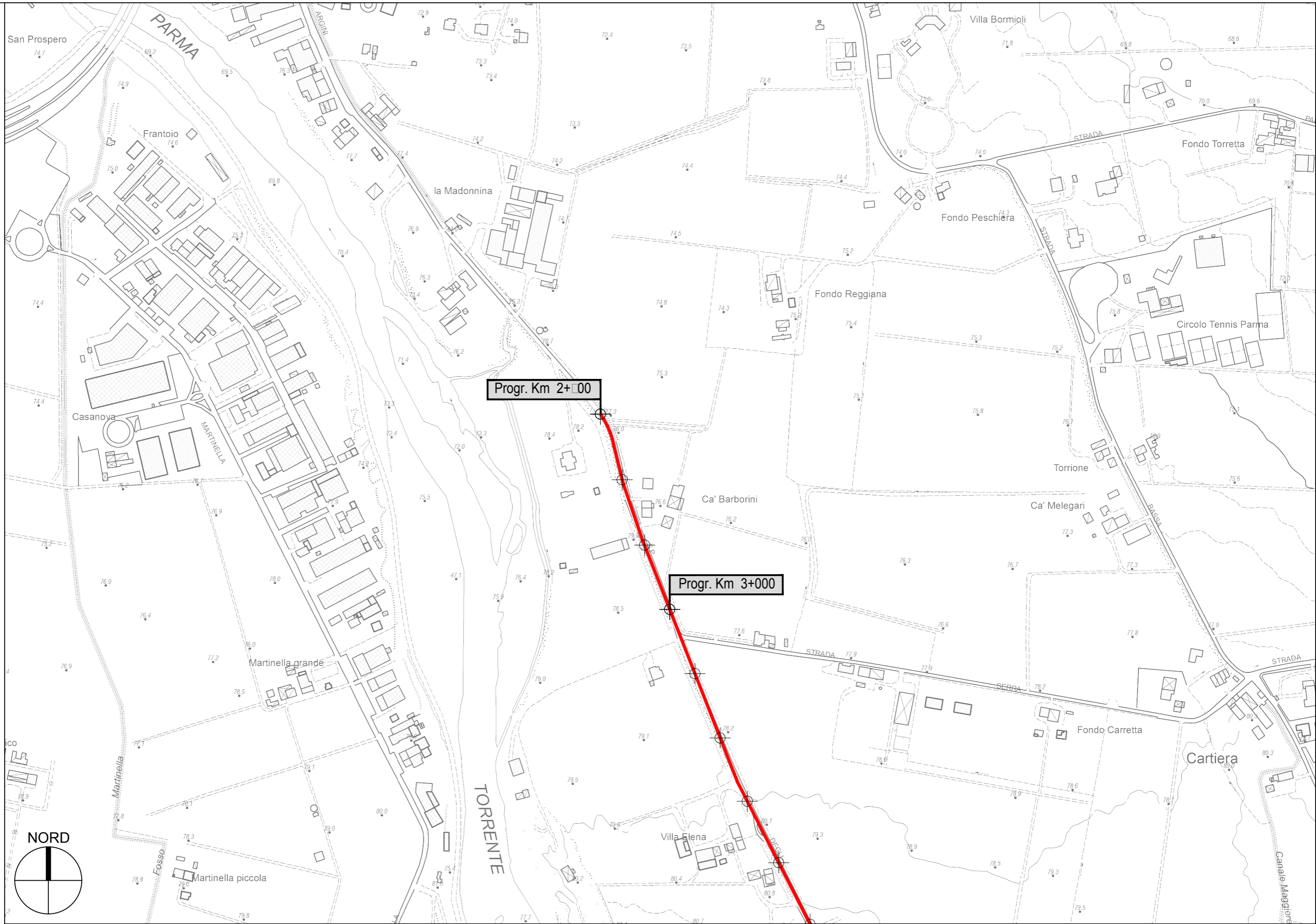
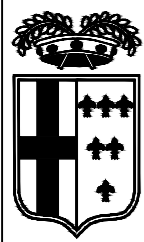


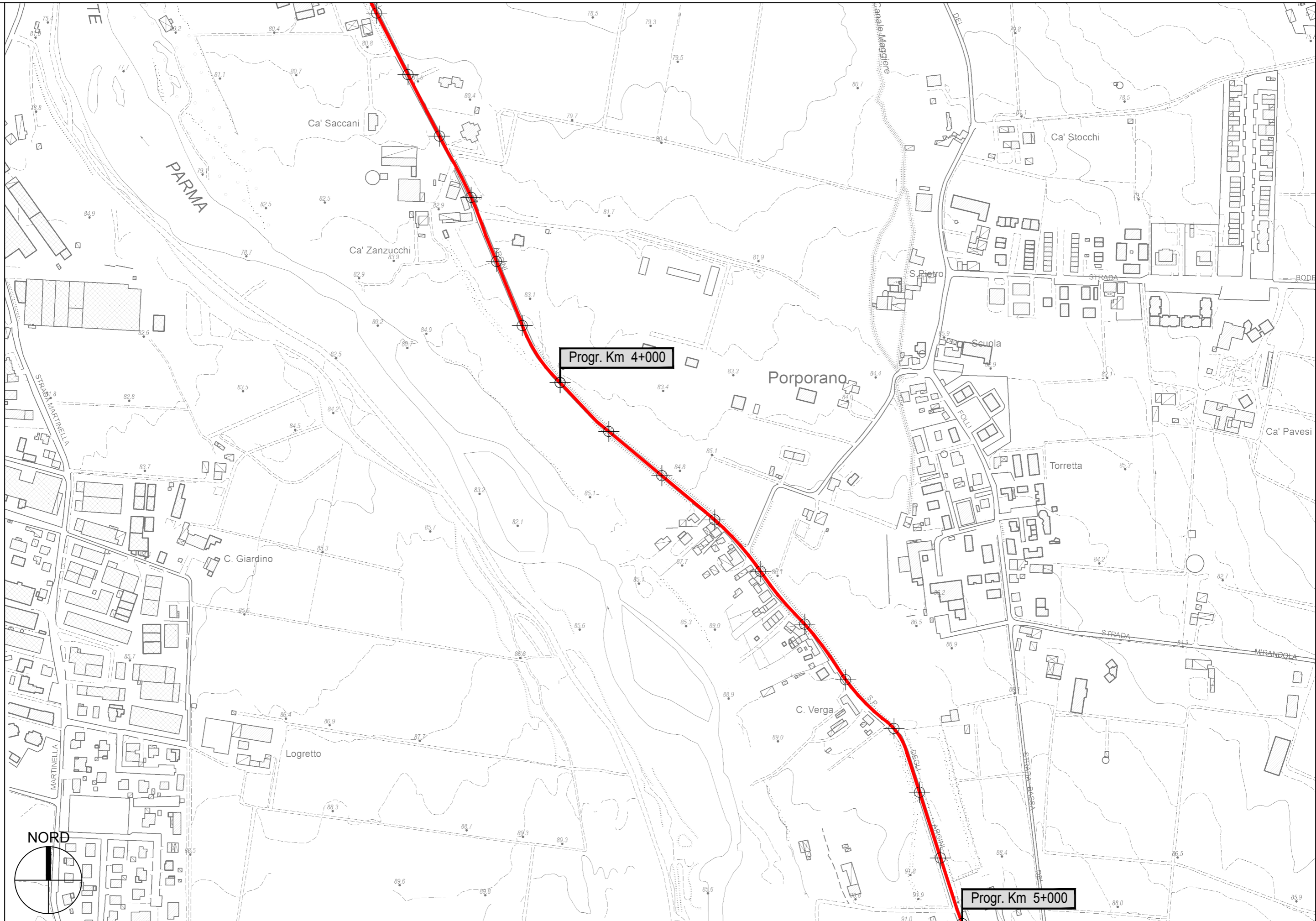
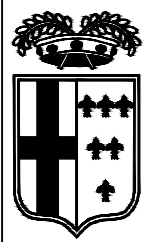








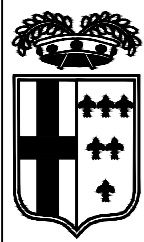


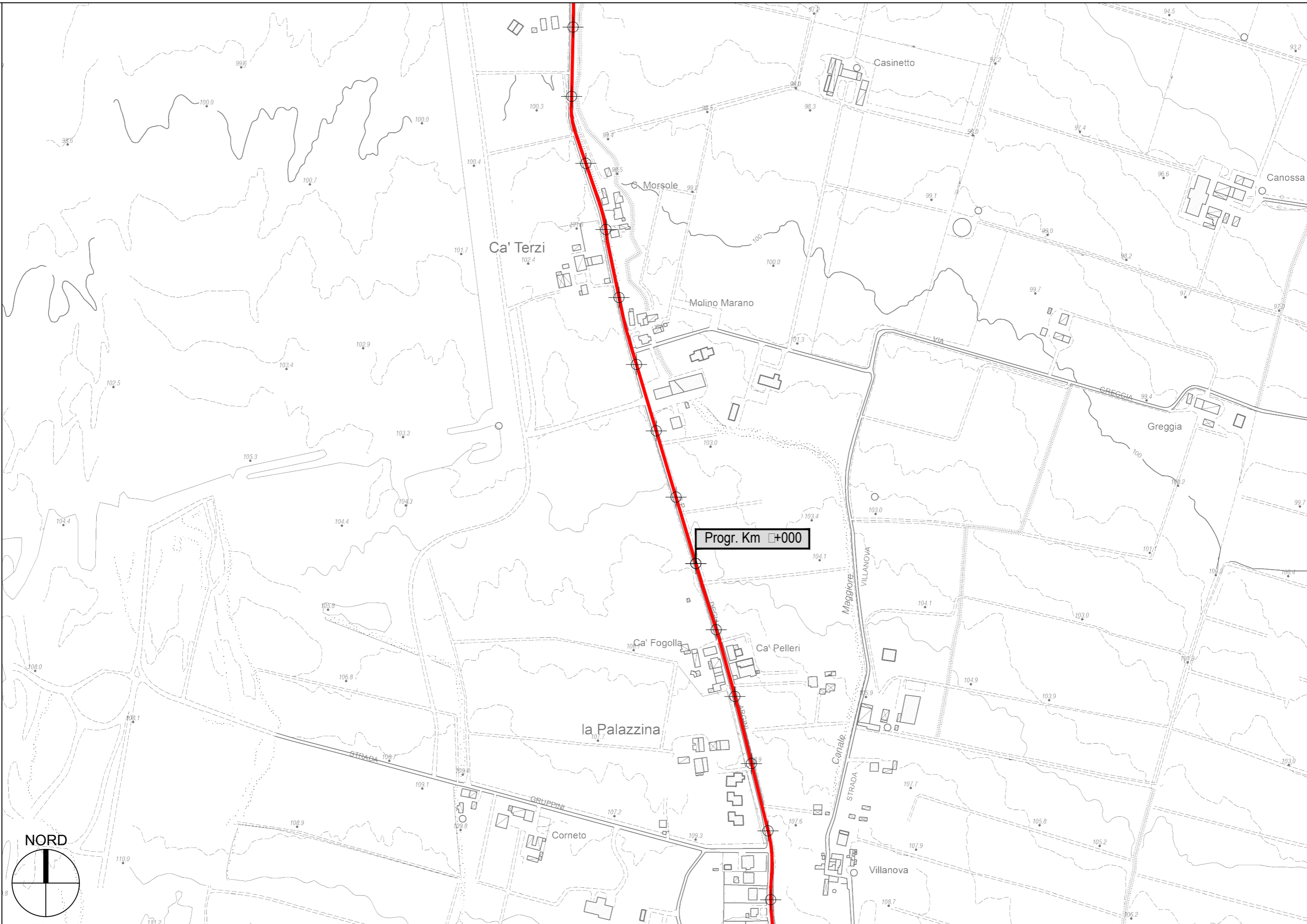
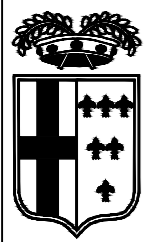


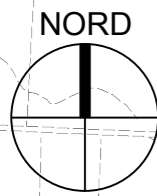
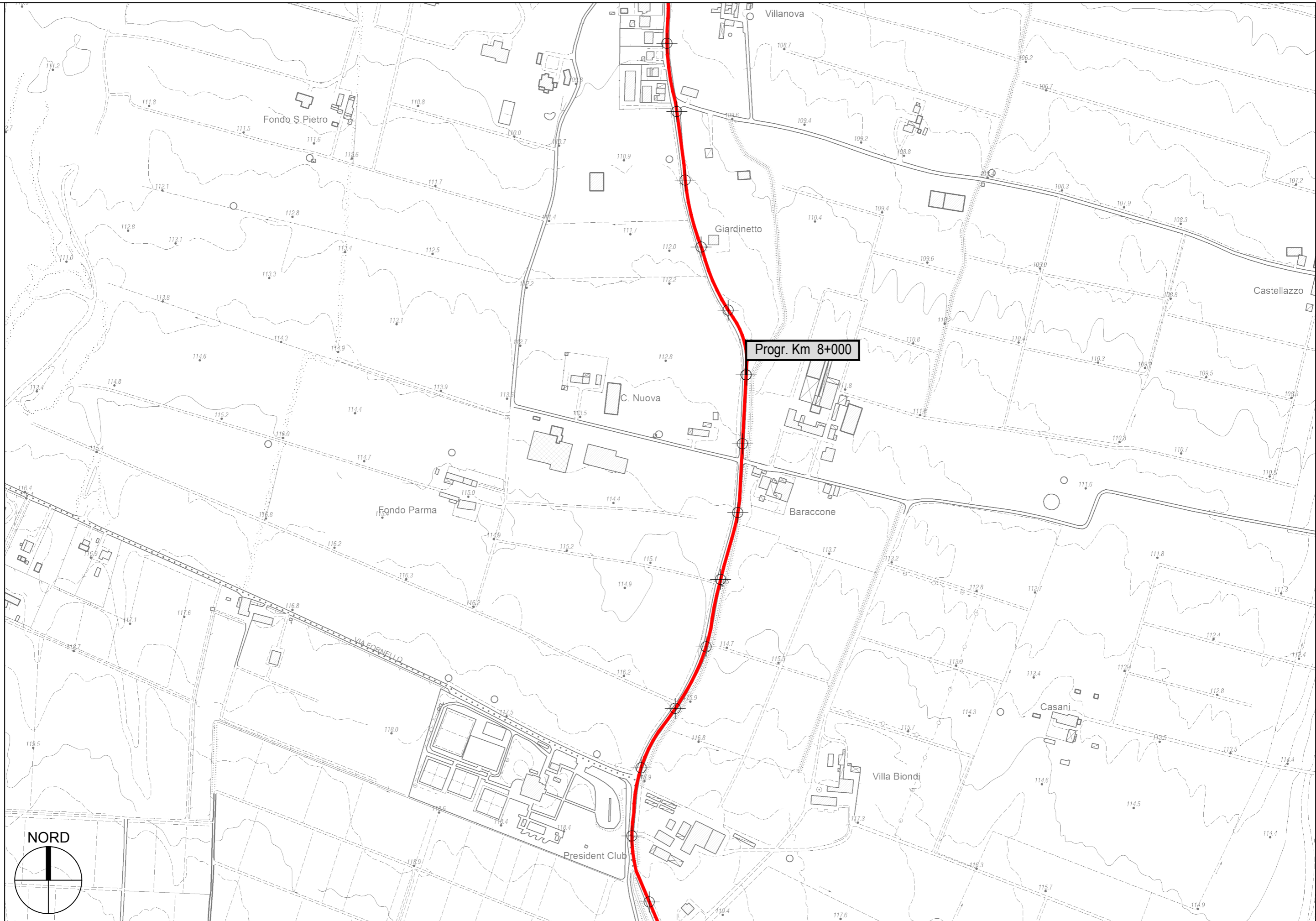
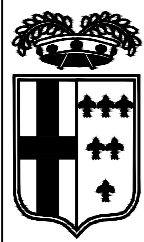
Progr. Km 4+000

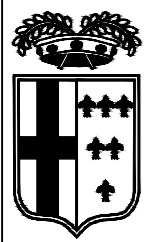
Progr. Km 5+000







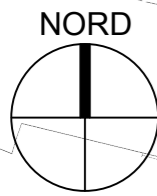
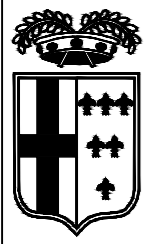


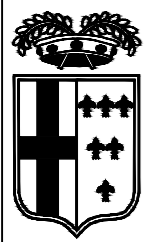


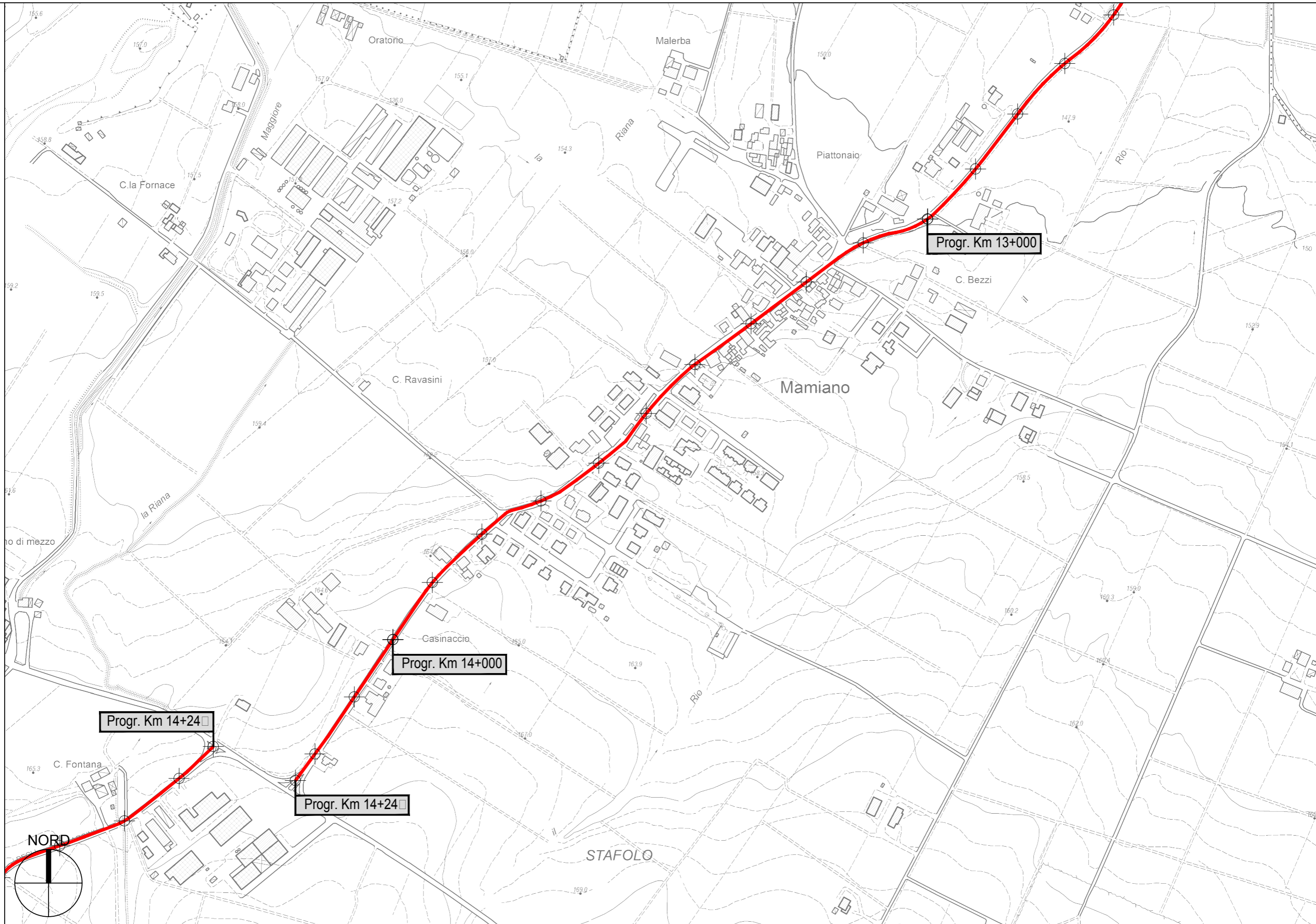
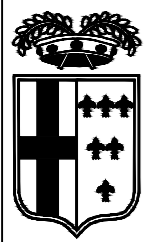
Progr. Km +000

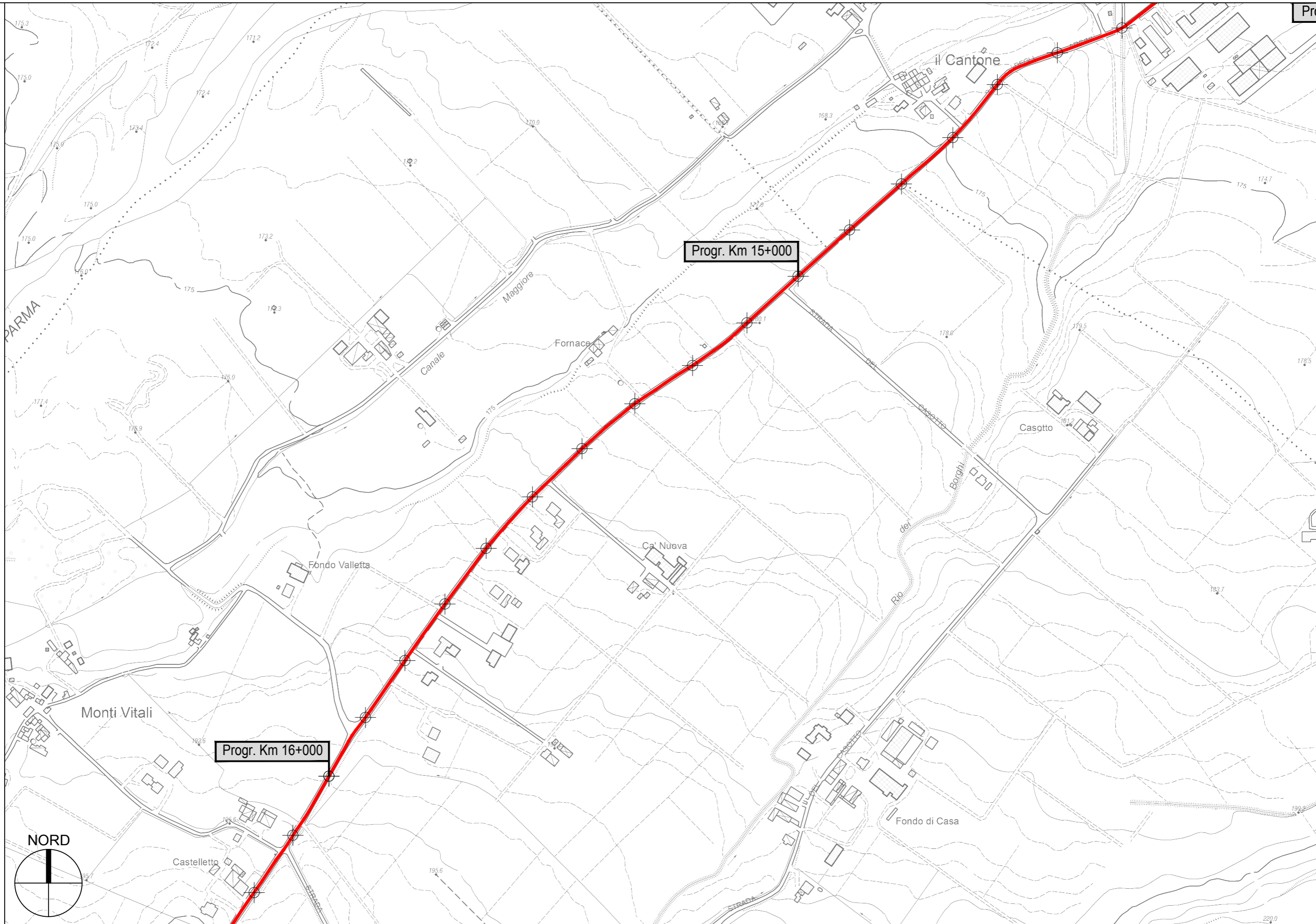
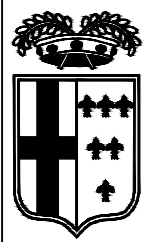
Progr. Km 10+000











Progr. Km 15+000

Progr. Km 16+000



