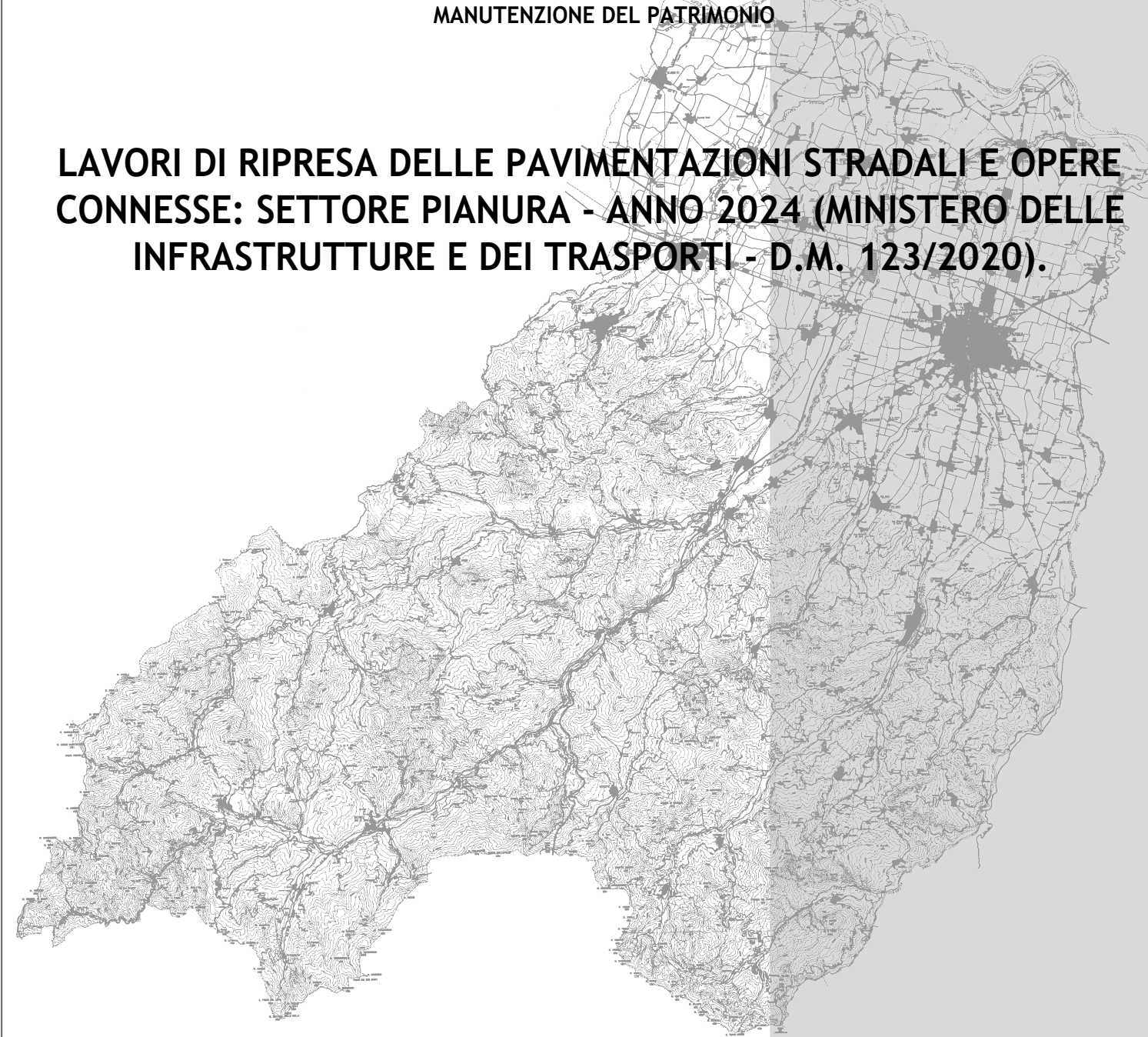




**PROVINCIA DI PARMA**  
SERVIZIO VIABILITA' E INFRASTRUTTURE  
TRASPORTI ECCEZIONALI - ESPROPRI - EDILIZIA SCOLASTICA  
MANUTENZIONE DEL PATRIMONIO

**LAVORI DI RIPRESA DELLE PAVIMENTAZIONI STRADALI E OPERE CONNESSE: SETTORE PIANURA - ANNO 2024 (MINISTERO DELLE INFRASTRUTTURE E DEI TRASPORTI - D.M. 123/2020).**



**PROGETTO DEFINITIVO-ESECUTIVO**

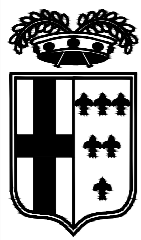
DESCRIZIONE	ELABORATO
<b>PLANIMETRIE: TRATTI DI INTERVENTO S.P. 33 PADANA OCCIDENTALE</b>	<b>7.10</b>
SCALA	DATA
<b>1:5.000</b>	<b>FEBBRAIO 2024</b>

Il Responsabile del Servizio  
Ing. Gianpaolo Monteverdi

Il Responsabile del Procedimento  
Arch. Gloria Resteghini

Il Progettista  
Geom. Antonio Mesti

Il Coordinatore  
Geom. Antonio Mesti



PROVINCIA DI PARMA



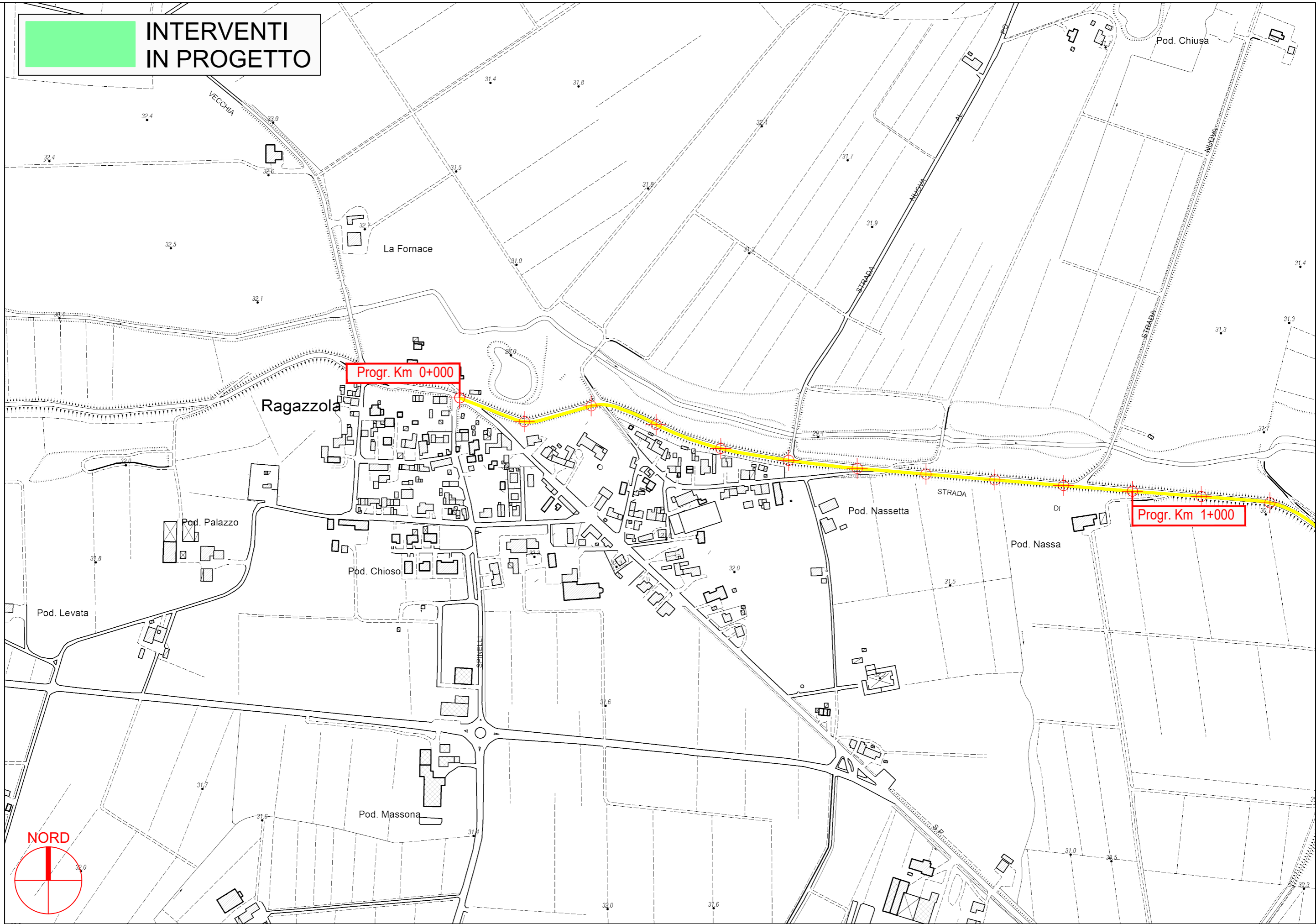
S.P. 33 Padana Occidentale - Sviluppo chilometrico 21+022 km

Inquadramento - Scala Adattata

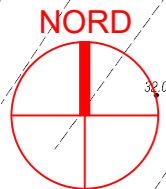




**INTERVENTI  
IN PROGETTO**

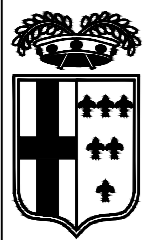


**PROVINCIA DI PARMA**

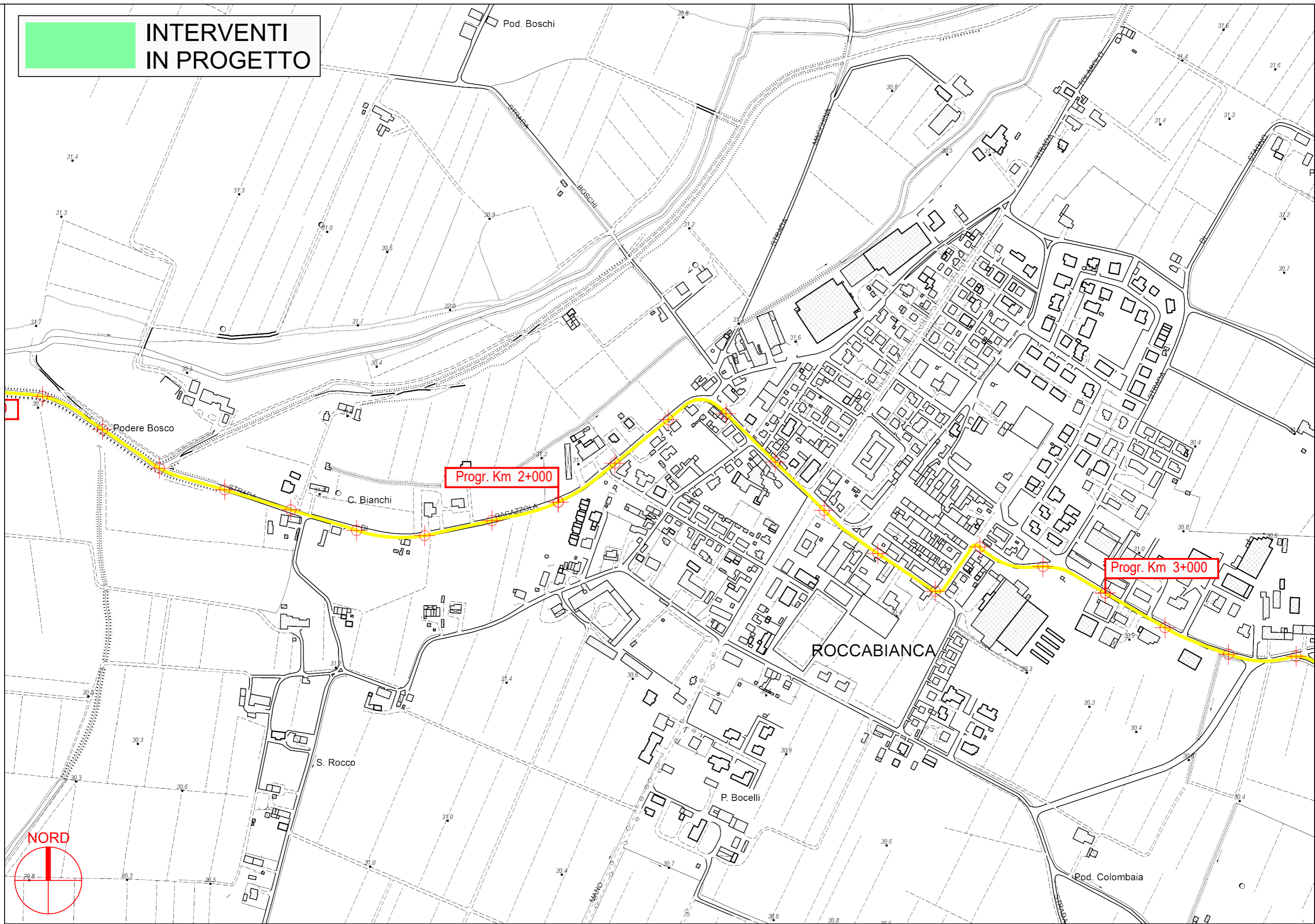


**S.P. 33 Padana Occidentale - Sviluppo chilometrico 21+022 km**

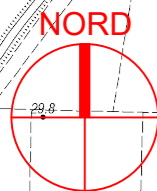
**Tavola 1 di 13 - Scala 1 : 5.000**



**INTERVENTI  
IN PROGETTO**



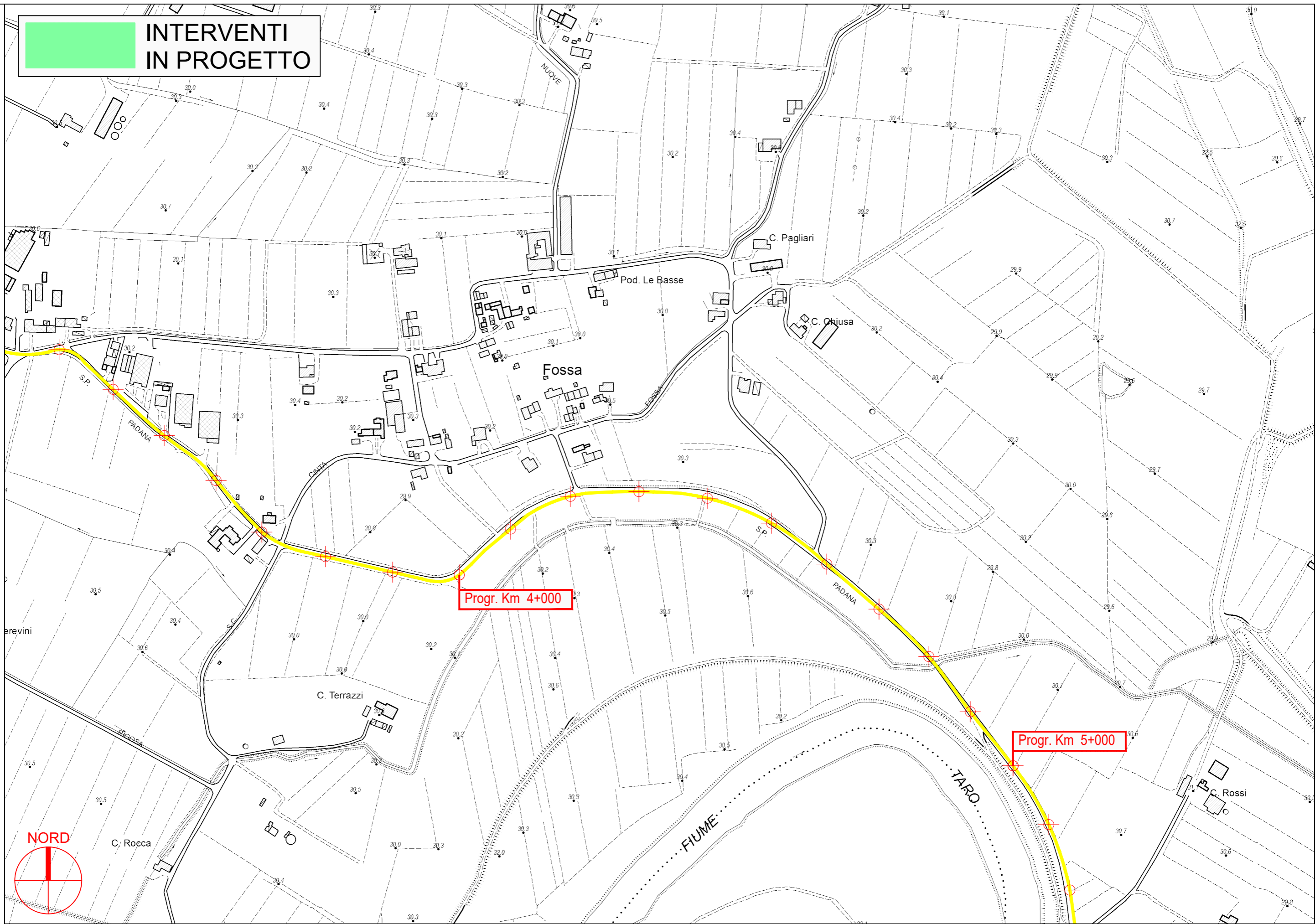
**PROVINCIA DI PARMA**







**INTERVENTI  
IN PROGETTO**



**PROVINCIA DI PARMA**

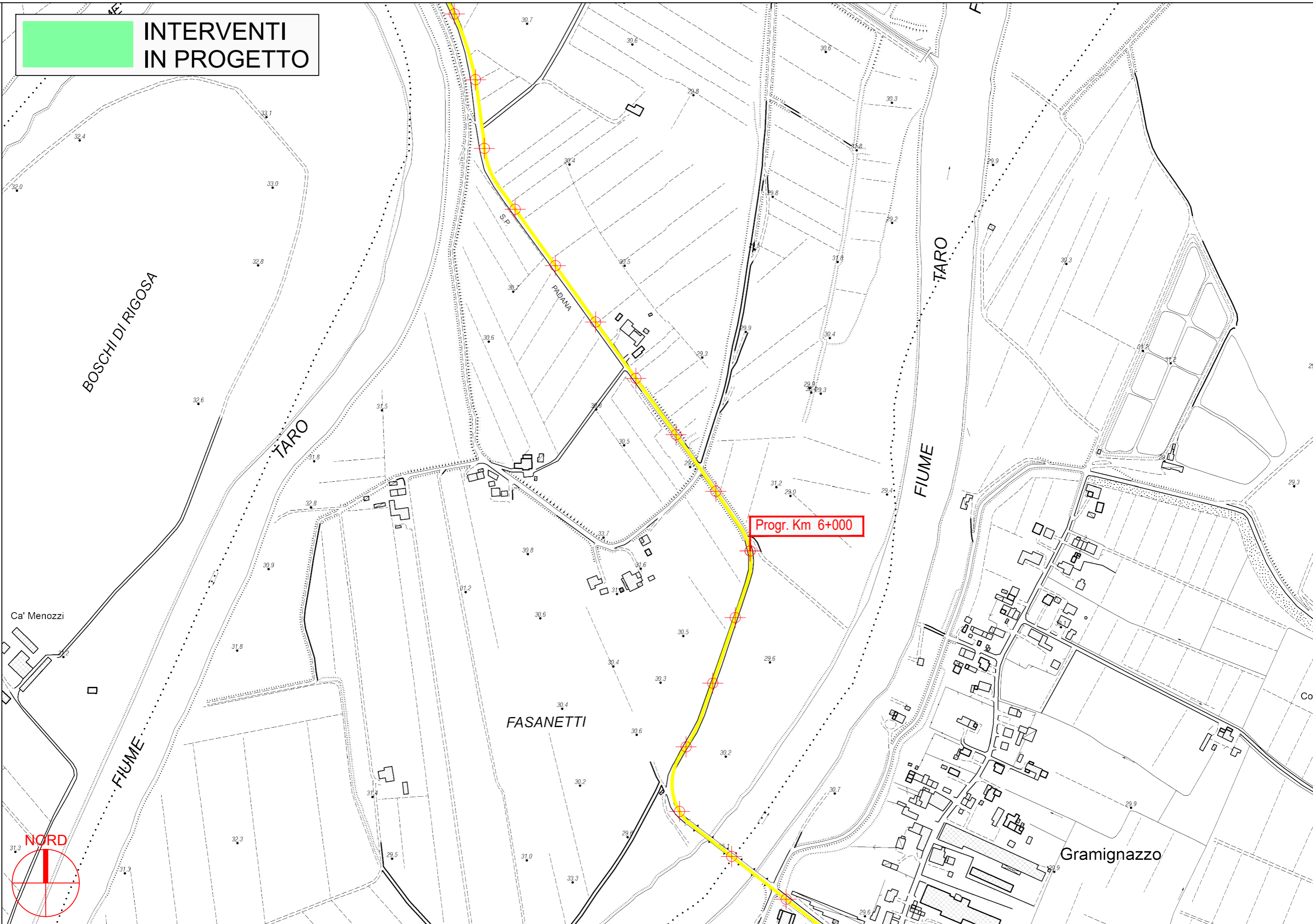


S.P. 33 Padana Occidentale - Sviluppo chilometrico 21+022 km

Tavola 3 di 13 - Scala 1 : 5.000



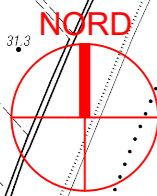
**INTERVENTI  
IN PROGETTO**



**PROVINCIA DI PARMA**

S.P. 33 Padana Occidentale - Sviluppo chilometrico 21+022 km

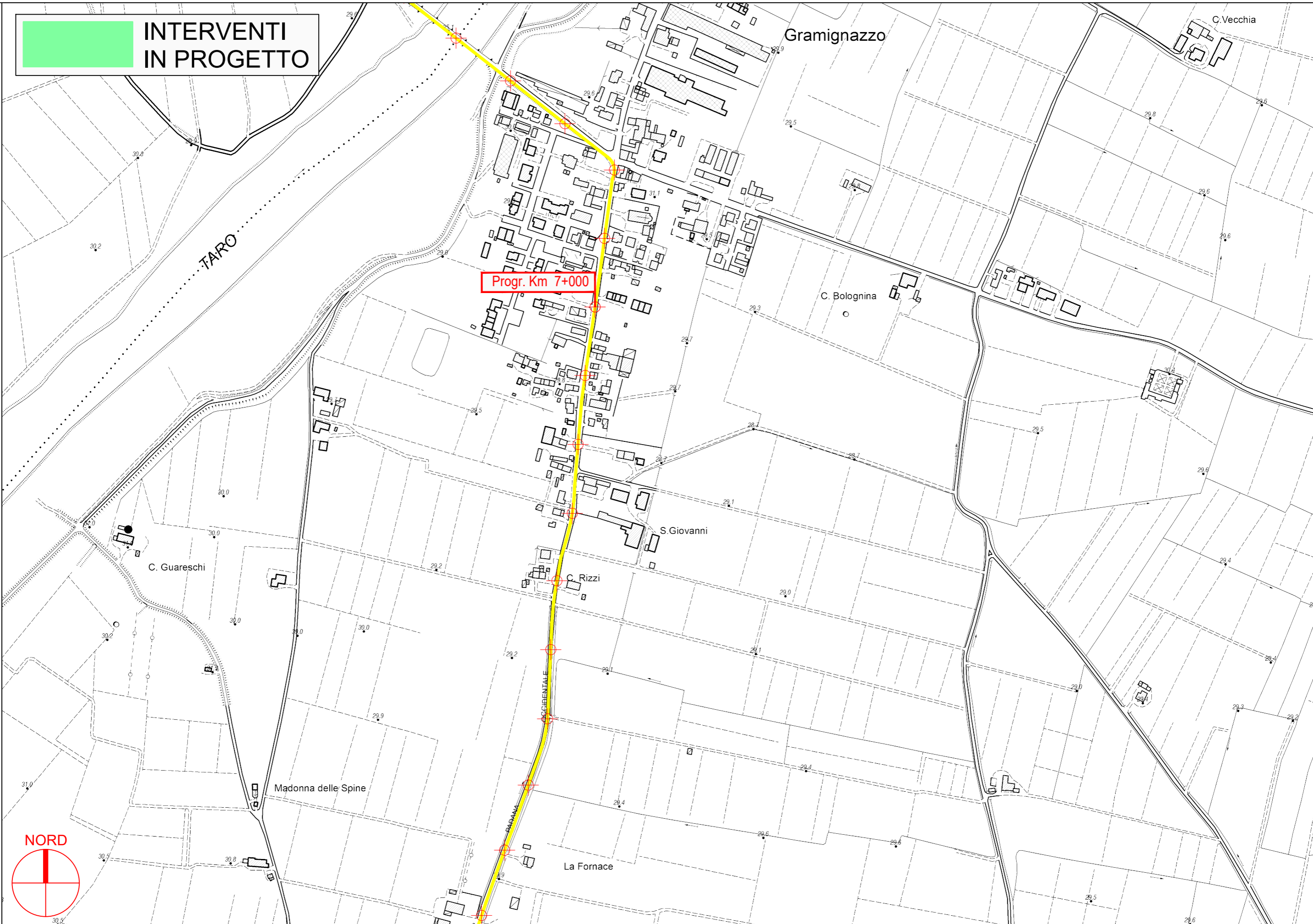
Tavola 4 di 13 - Scala 1 : 5.000







**INTERVENTI  
IN PROGETTO**



**PROVINCIA DI PARMA**

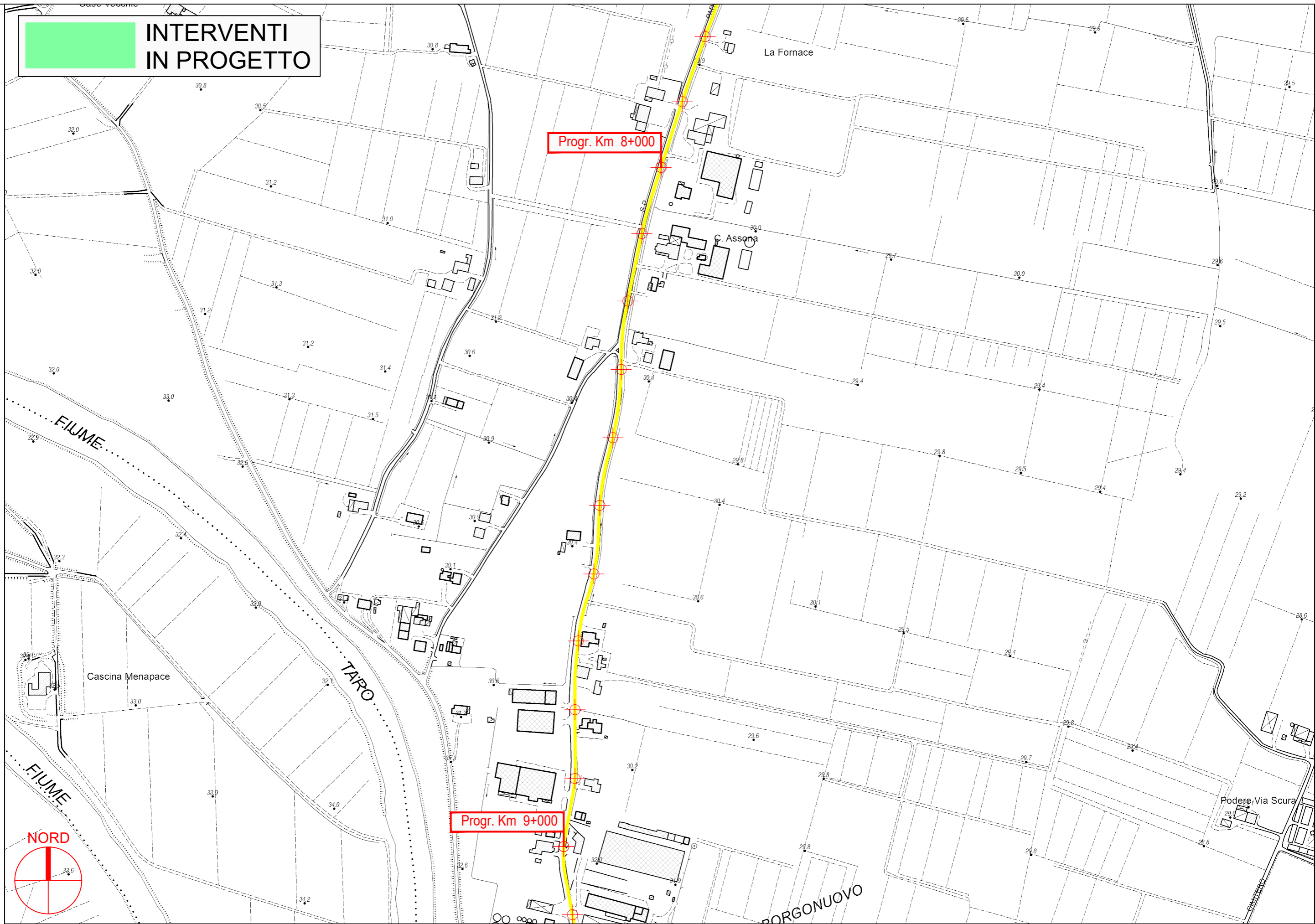


**S.P. 33 Padana Occidentale - Sviluppo chilometrico 21+022 km**

**Tavola 5 di 13 - Scala 1 : 5.000**



**INTERVENTI  
IN PROGETTO**



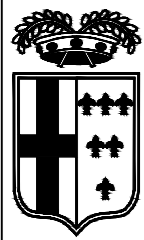
**PROVINCIA DI PARMA**



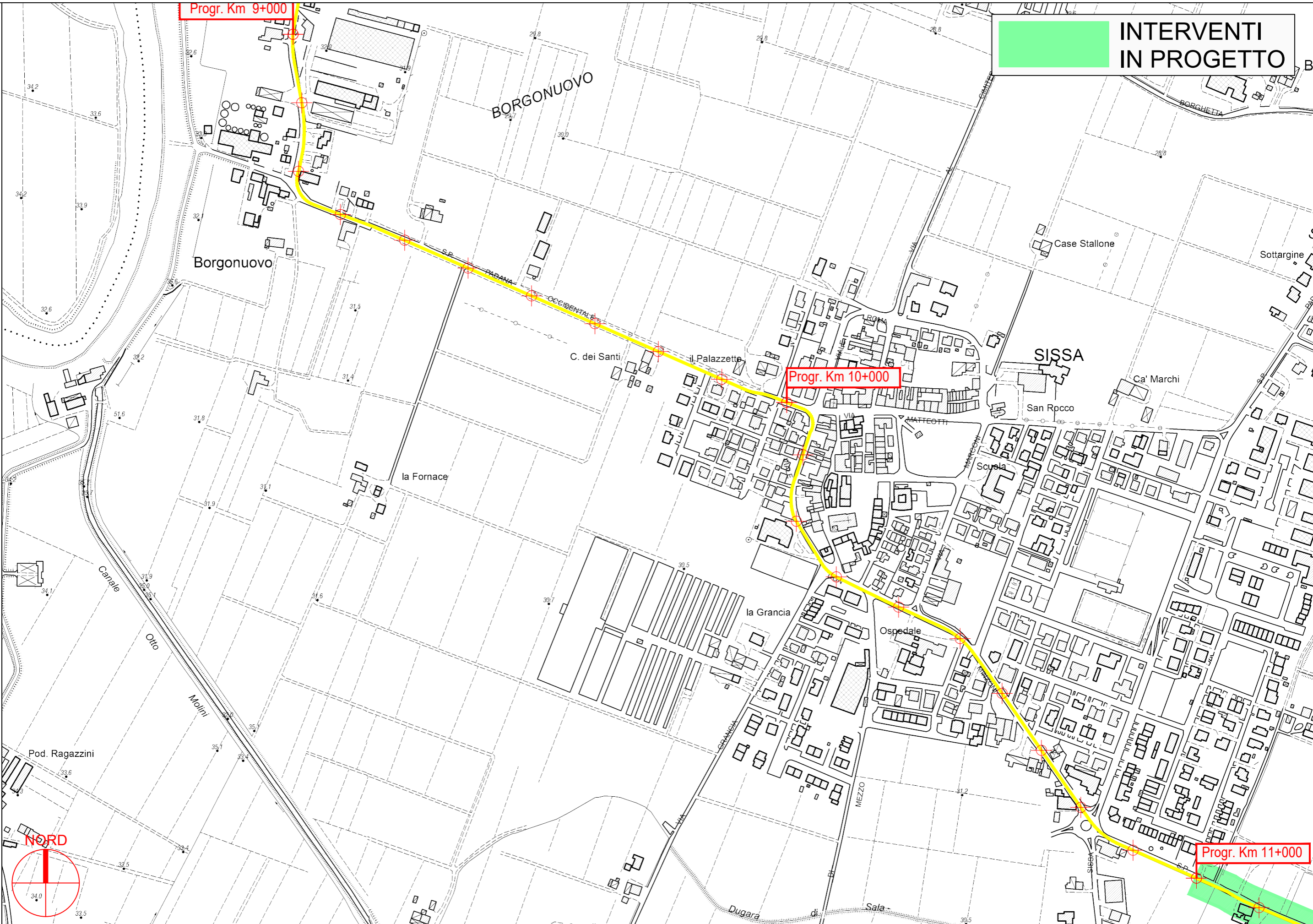
**S.P. 33 Padana Occidentale - Sviluppo chilometrico 21+022 km**

**Tavola 6 di 13 - Scala 1 : 5.000**





**INTERVENTI  
IN PROGETTO**

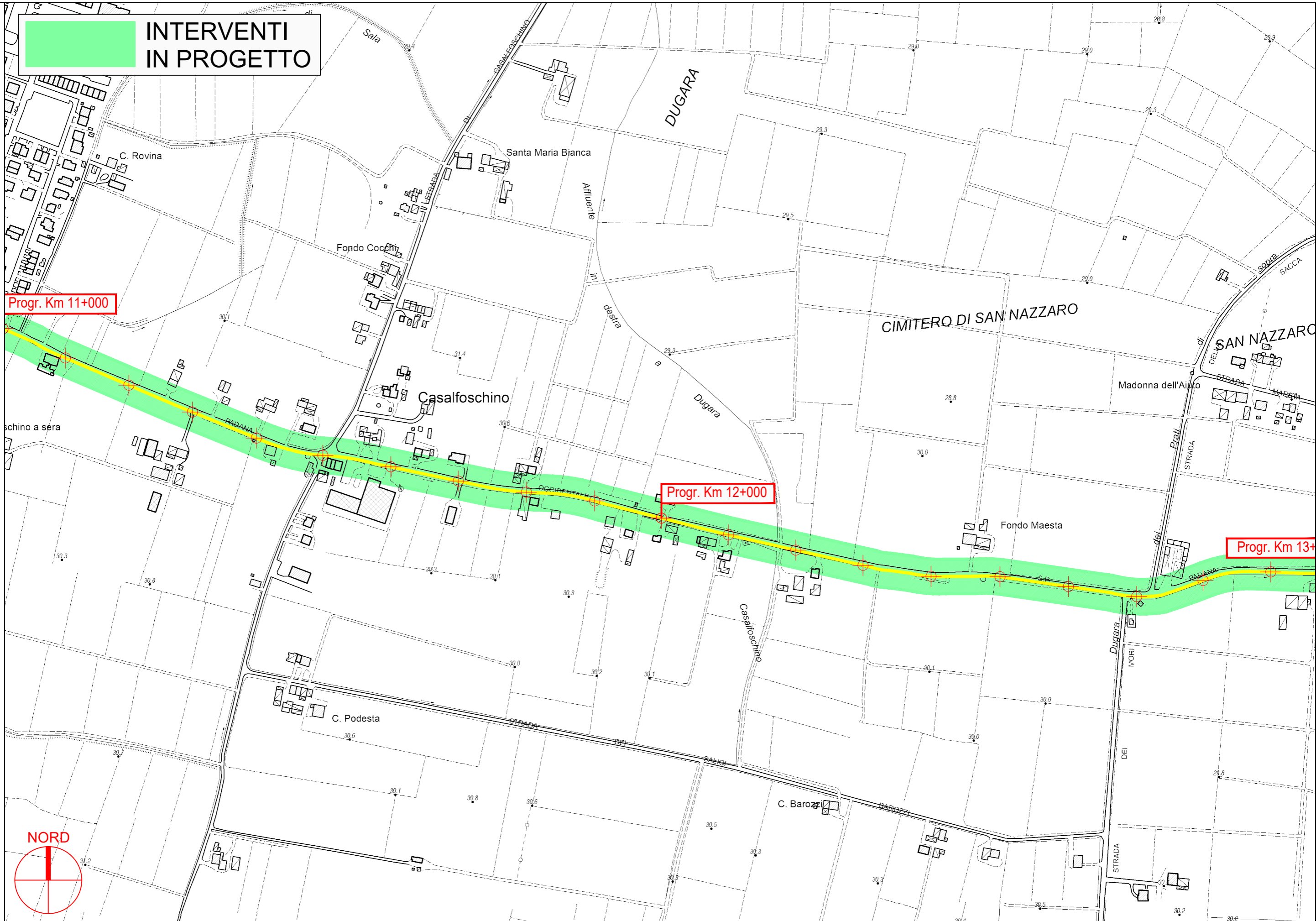


**PROVINCIA DI PARMA**





**INTERVENTI  
IN PROGETTO**



**PROVINCIA DI PARMA**



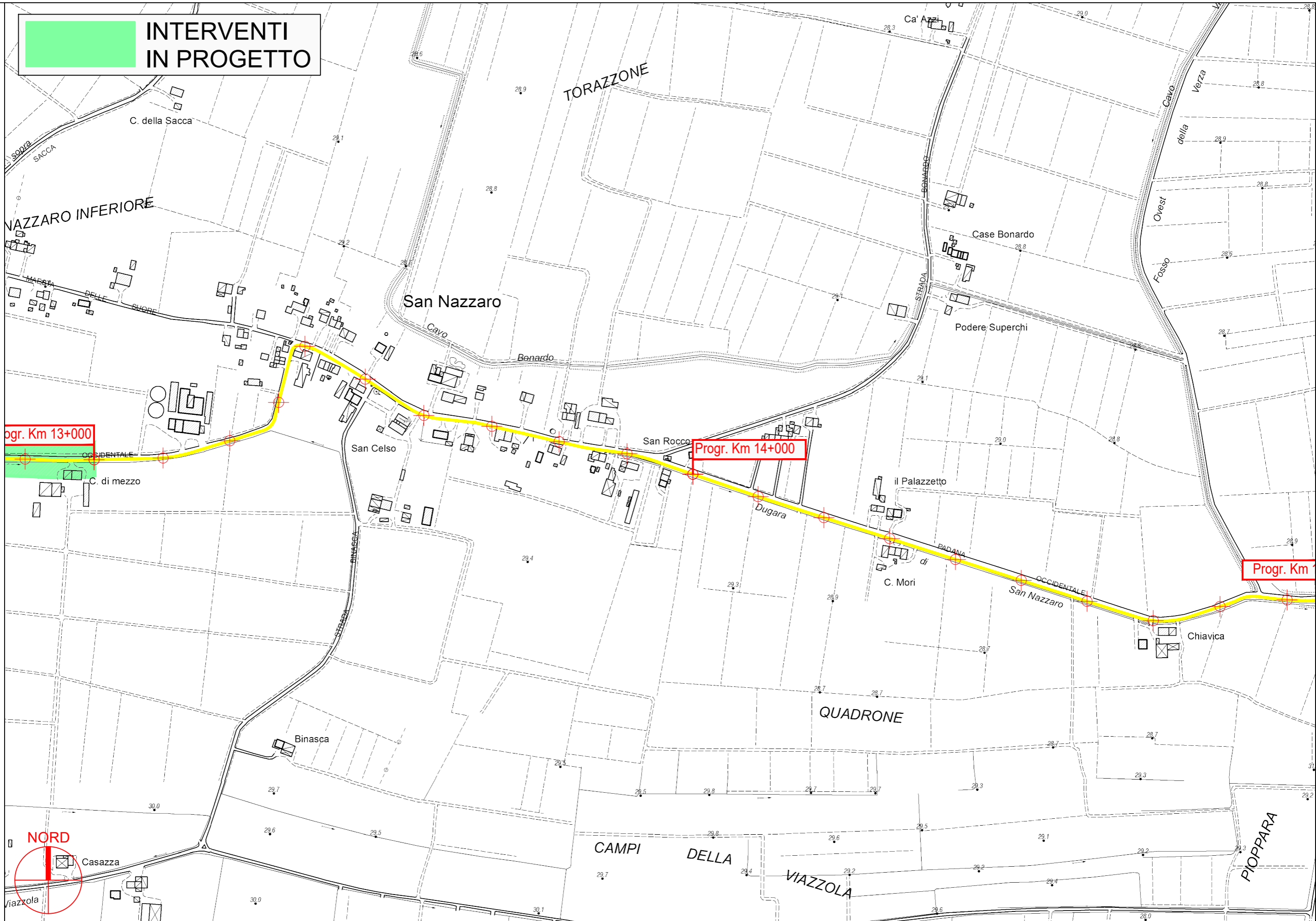
**S.P. 33 Padana Occidentale - Sviluppo chilometrico 21+022 km**

**Tavola 8 di 13 - Scala 1 : 5.000**





**INTERVENTI  
IN PROGETTO**

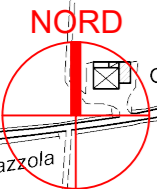


Progr. Km 13+000

Progr. Km 14+000

Progr. Km 15+000

PROVINCIA DI PARMA

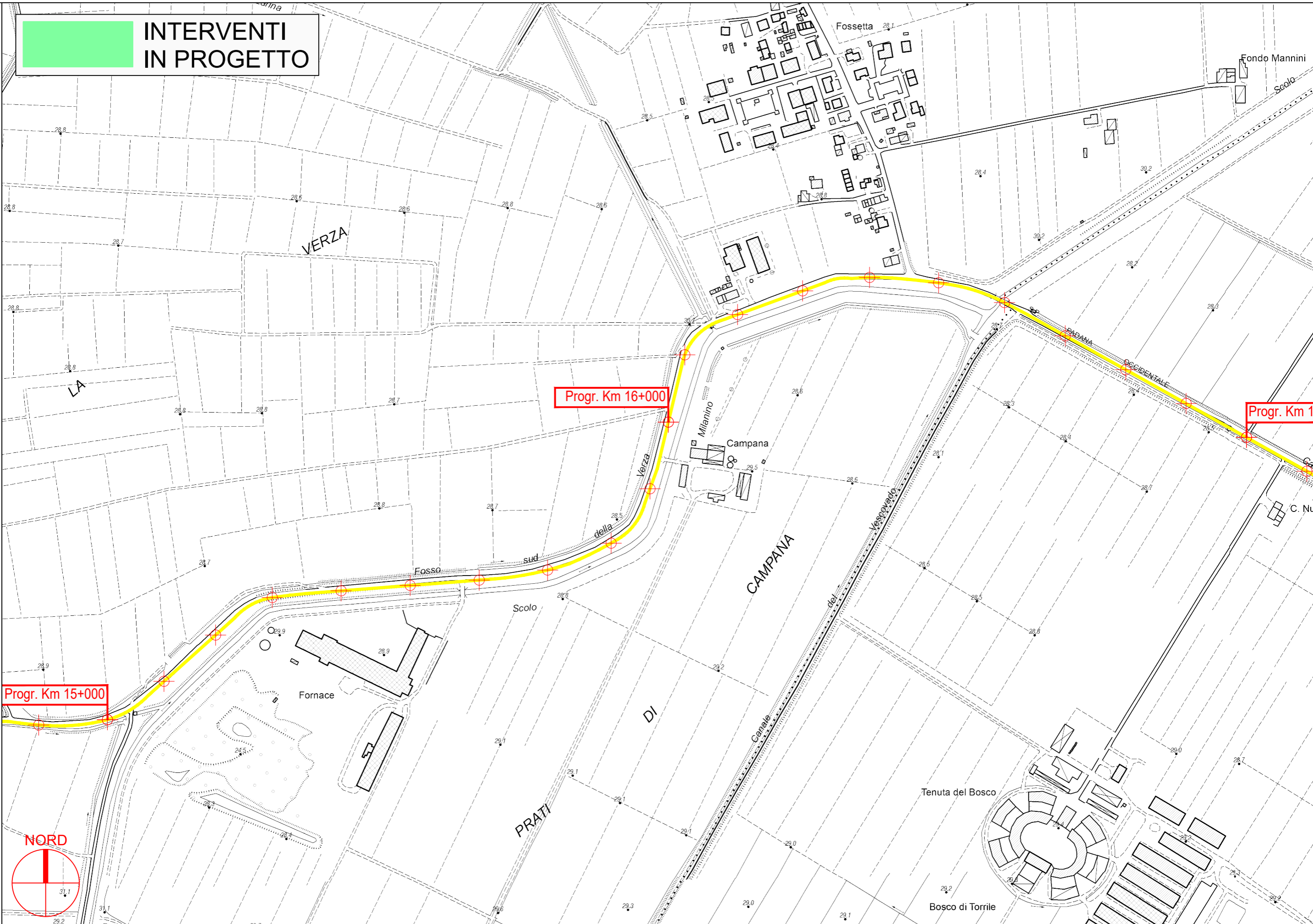


S.P. 33 Padana Occidentale - Sviluppo chilometrico 21+022 km

Tavola 9 di 13 - Scala 1 : 5.000



**INTERVENTI  
IN PROGETTO**



Progr. Km 16+000

Progr. Km 17+000

Progr. Km 15+000

PROVINCIA DI PARMA

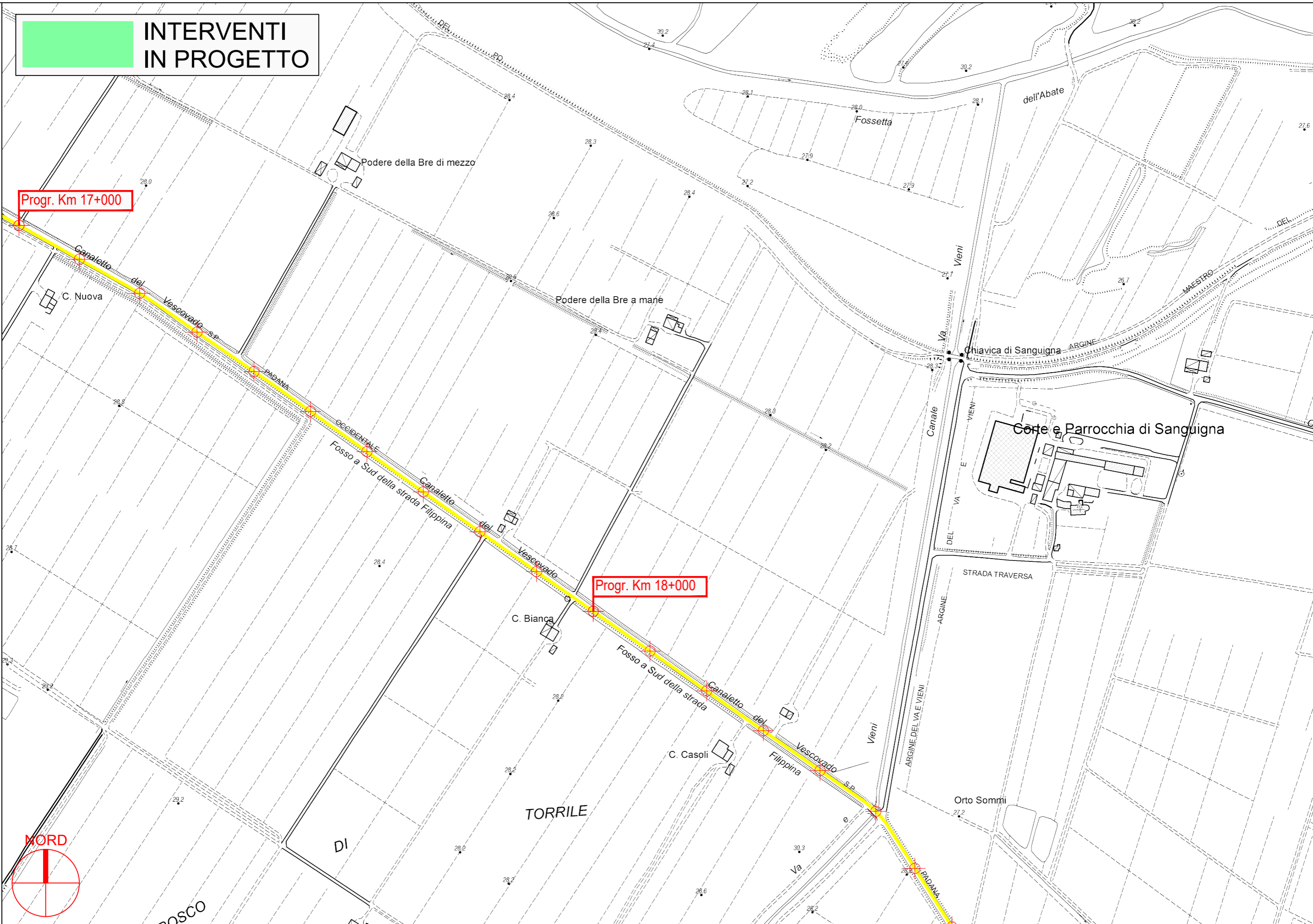
S.P. 33 Padana Occidentale - Sviluppo chilometrico 21+022 km

Tavola 10 di 13 - Scala 1 : 5.000





**INTERVENTI  
IN PROGETTO**

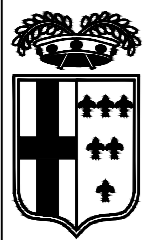


PROVINCIA DI PARMA

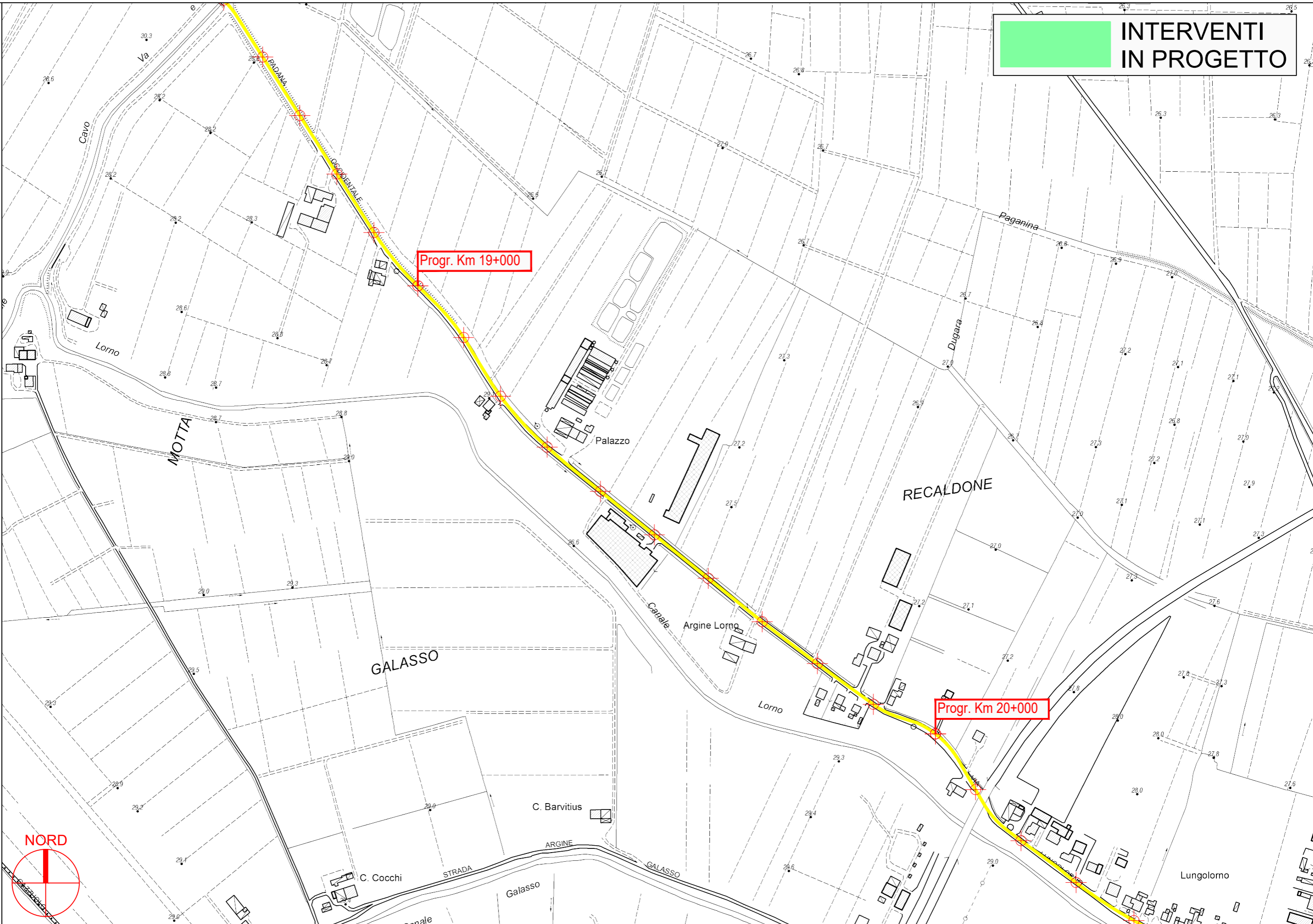


S.P. 33 Padana Occidentale - Sviluppo chilometrico 21+022 km

Tavola 11 di 13 - Scala 1 : 5.000



**INTERVENTI  
IN PROGETTO**



**PROVINCIA DI PARMA**



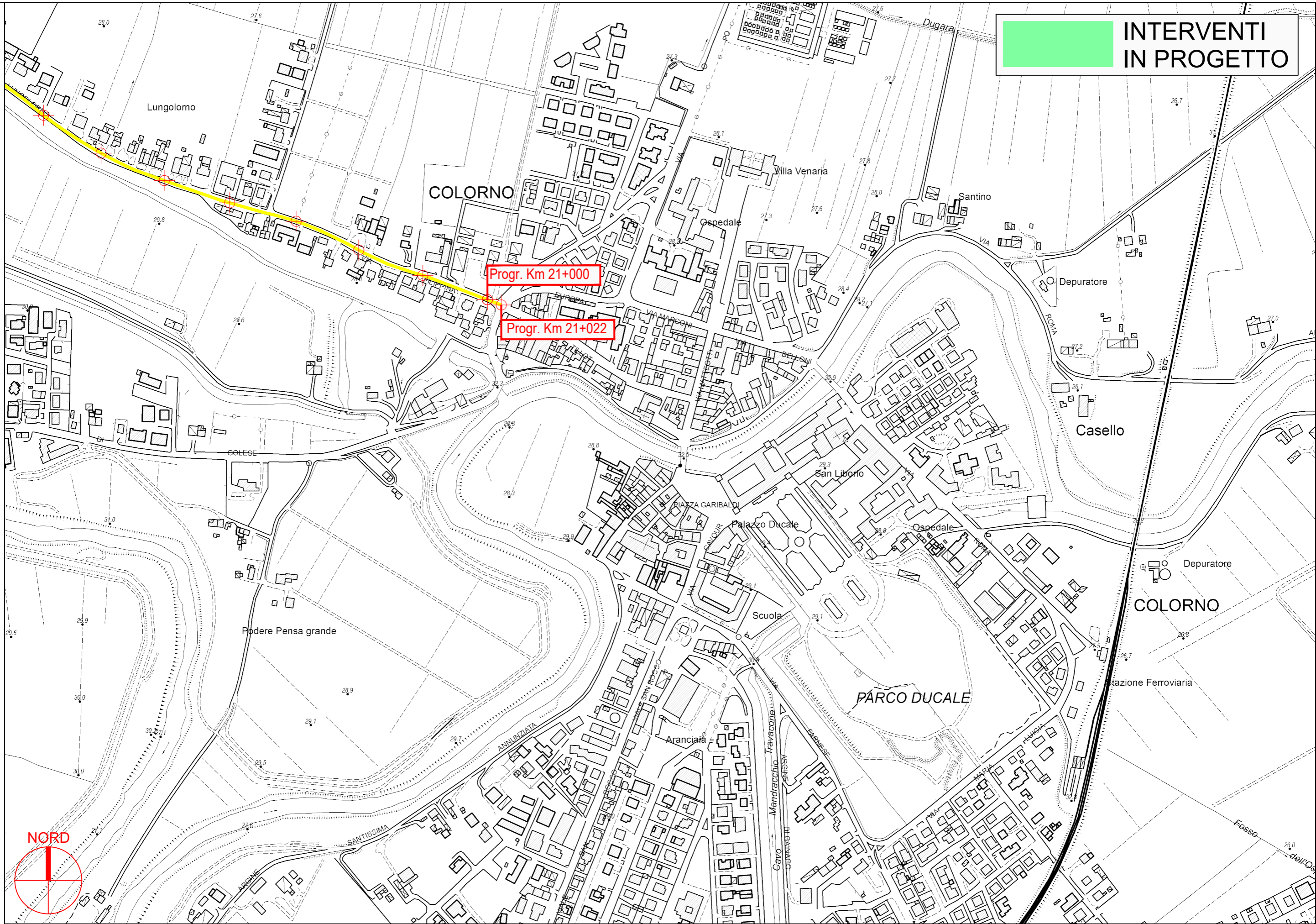
**S.P. 33 Padana Occidentale - Sviluppo chilometrico 21+022 km**

**Tavola 12 di 13 - Scala 1 : 5.000**





**INTERVENTI  
IN PROGETTO**

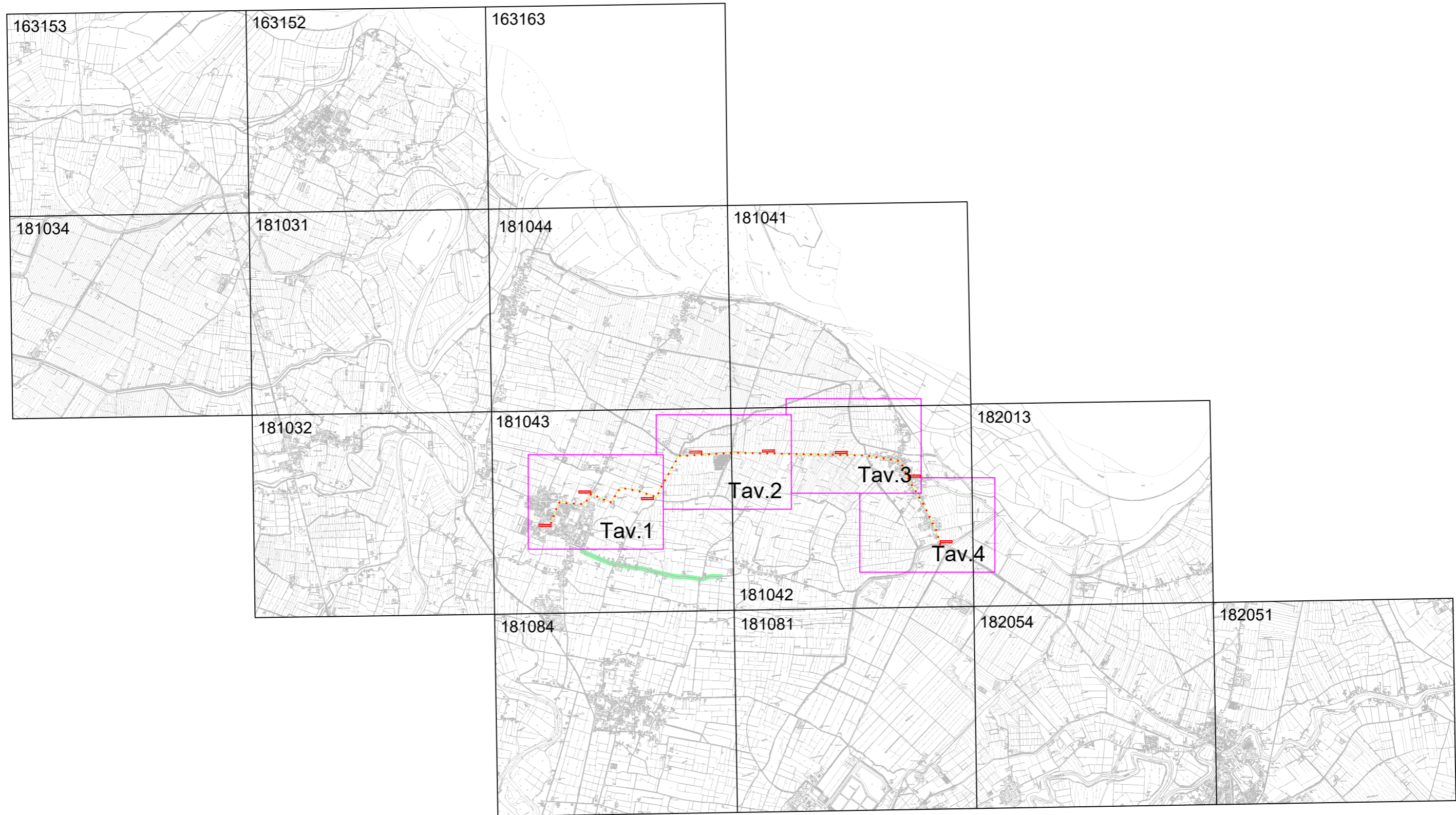
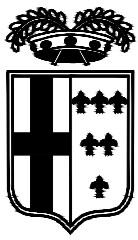


**PROVINCIA DI PARMA**

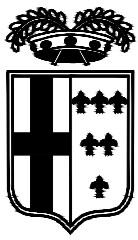
**S.P. 33 Padana Occidentale - Sviluppo chilometrico 21+022 km**

**Tavola 13 di 13 - Scala 1 : 5.000**

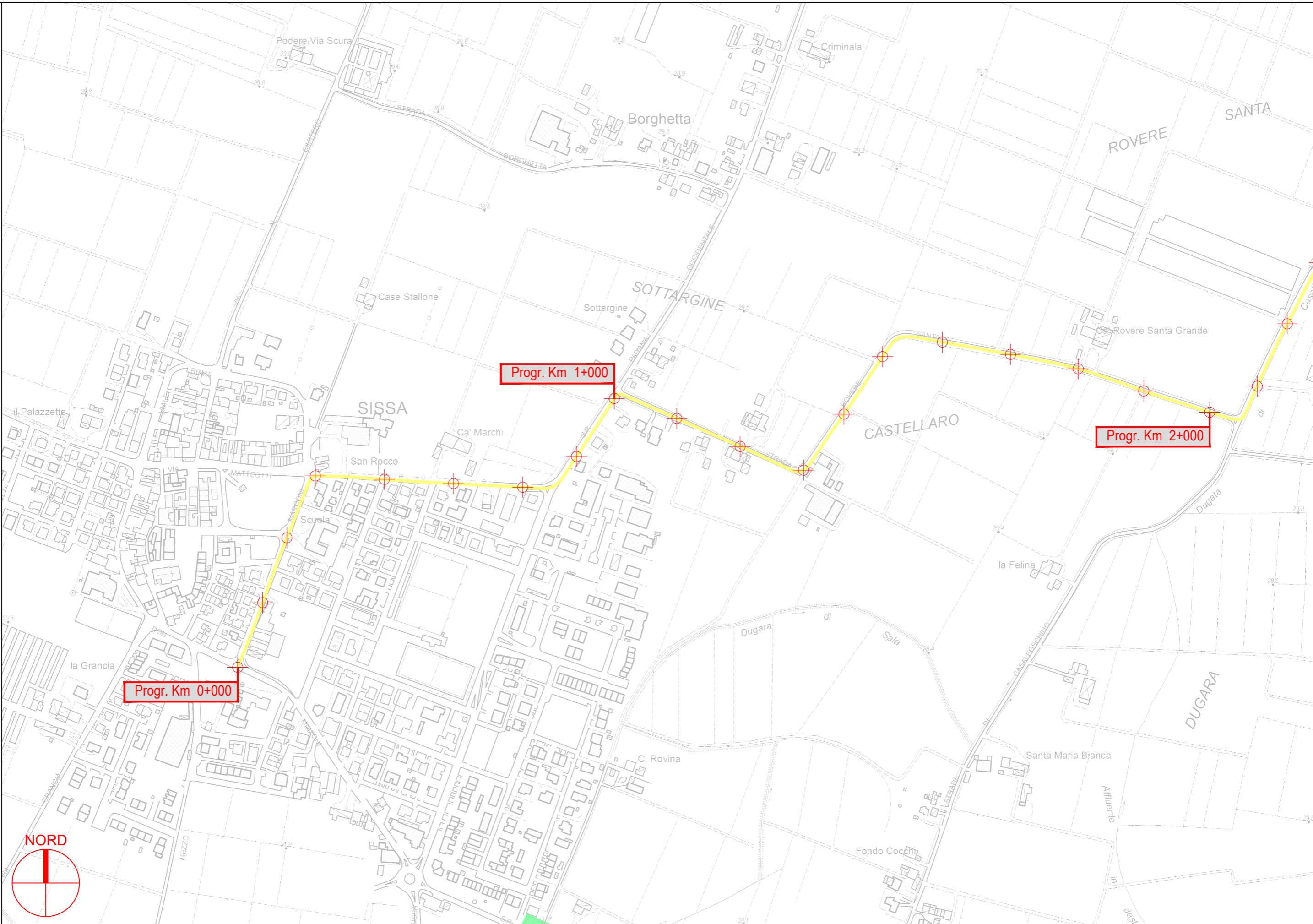


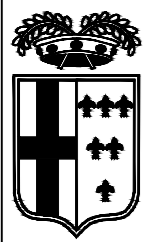






PROVINCIA DI PARMA

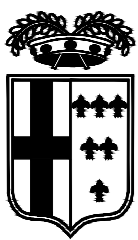




PROVINCIA DI PARMA

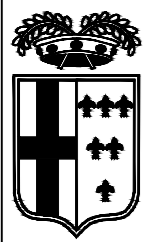




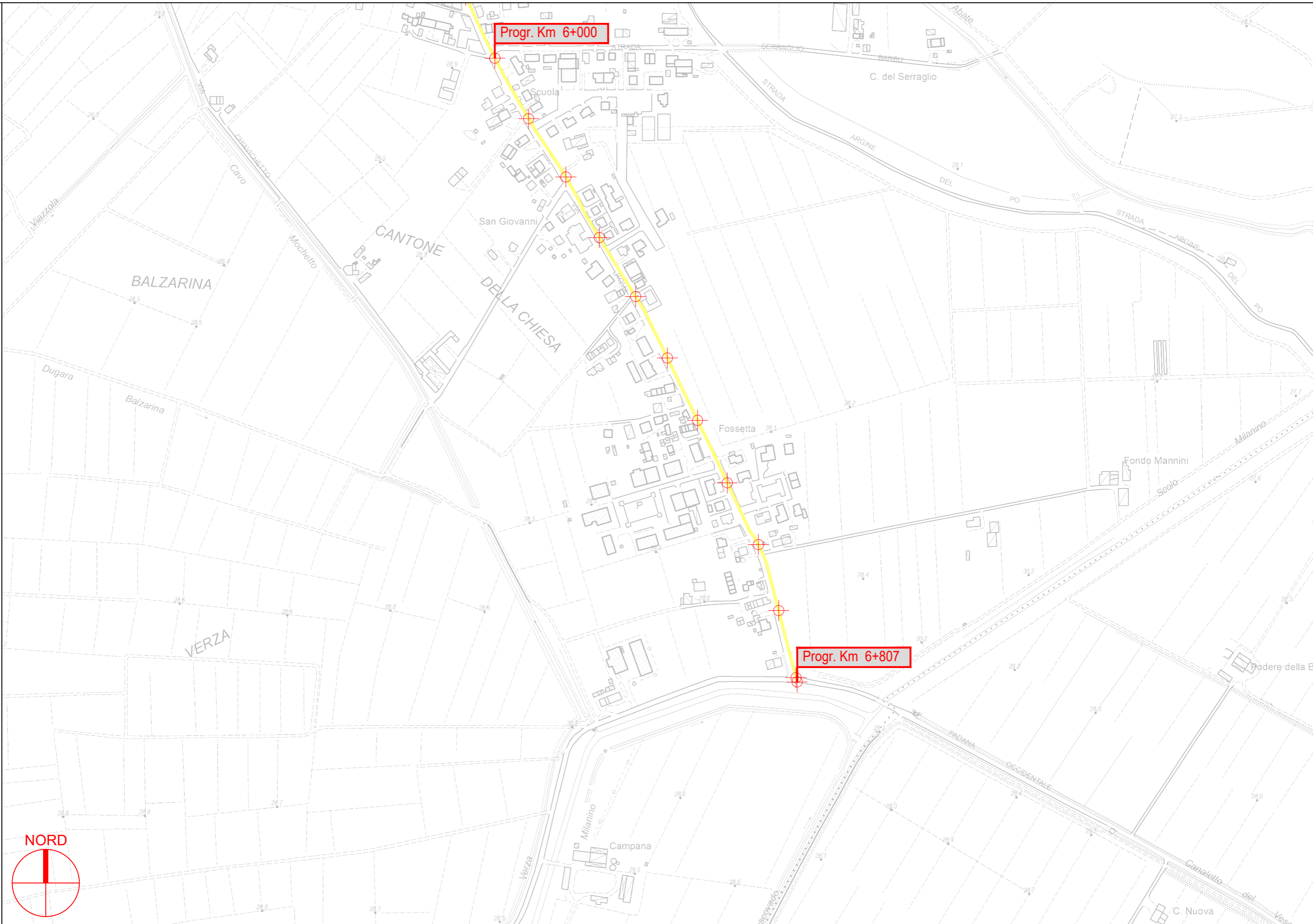


PROVINCIA DI PARMA





PROVINCIA DI PARMA



S.P. 33 Padana Occidentale Variante di Coltaro - Sviluppo chilometrico 6+807 km

Tavola 4 di 4 - Scala 1 : 5.000