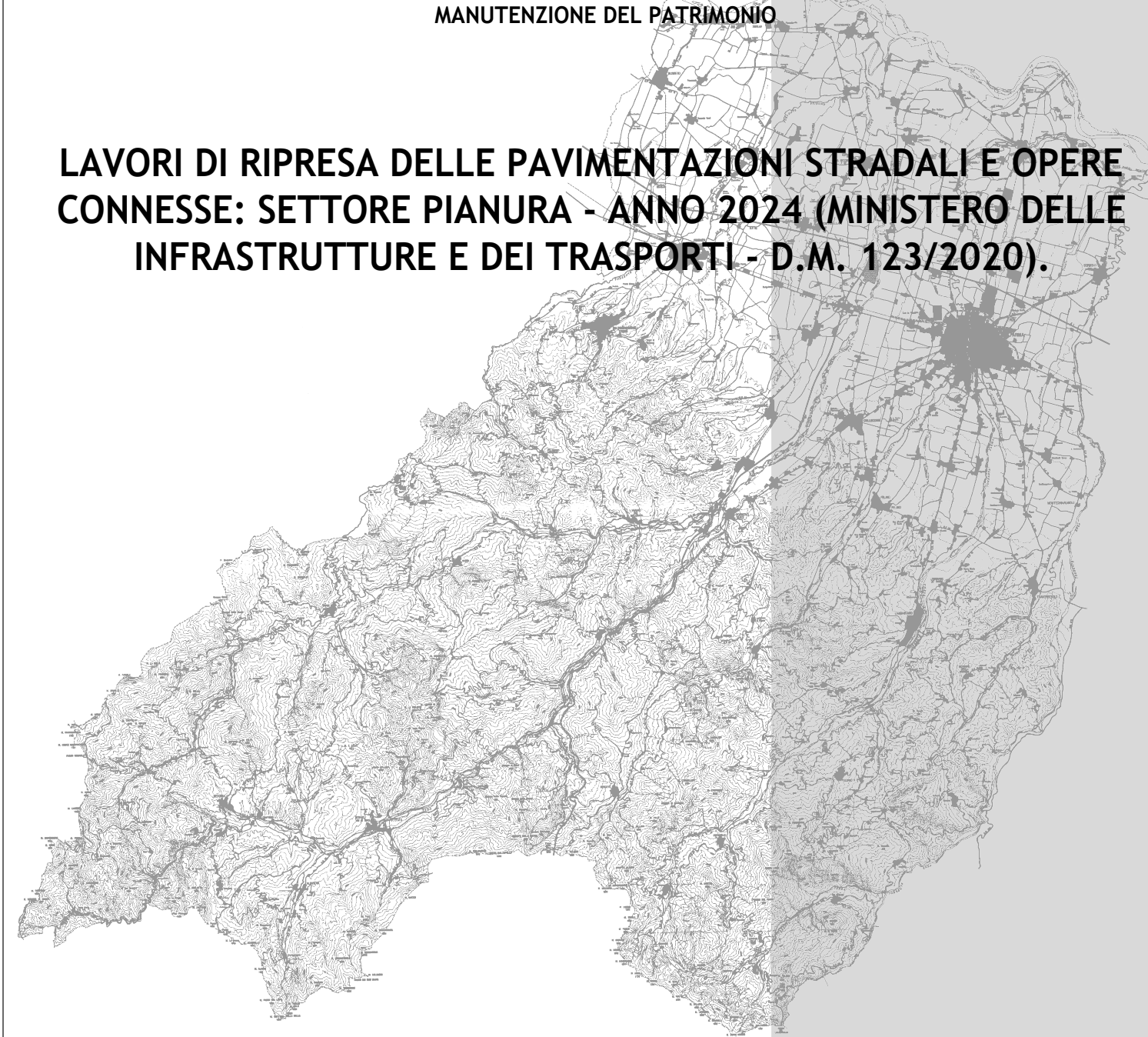




**PROVINCIA DI PARMA**  
SERVIZIO VIABILITA' E INFRASTRUTTURE  
TRASPORTI ECCEZIONALI - ESPROPRI - EDILIZIA SCOLASTICA  
MANUTENZIONE DEL PATRIMONIO

**LAVORI DI RIPRESA DELLE PAVIMENTAZIONI STRADALI E OPERE CONNESSE: SETTORE PIANURA - ANNO 2024 (MINISTERO DELLE INFRASTRUTTURE E DEI TRASPORTI - D.M. 123/2020).**



**PROGETTO DEFINITIVO-ESECUTIVO**

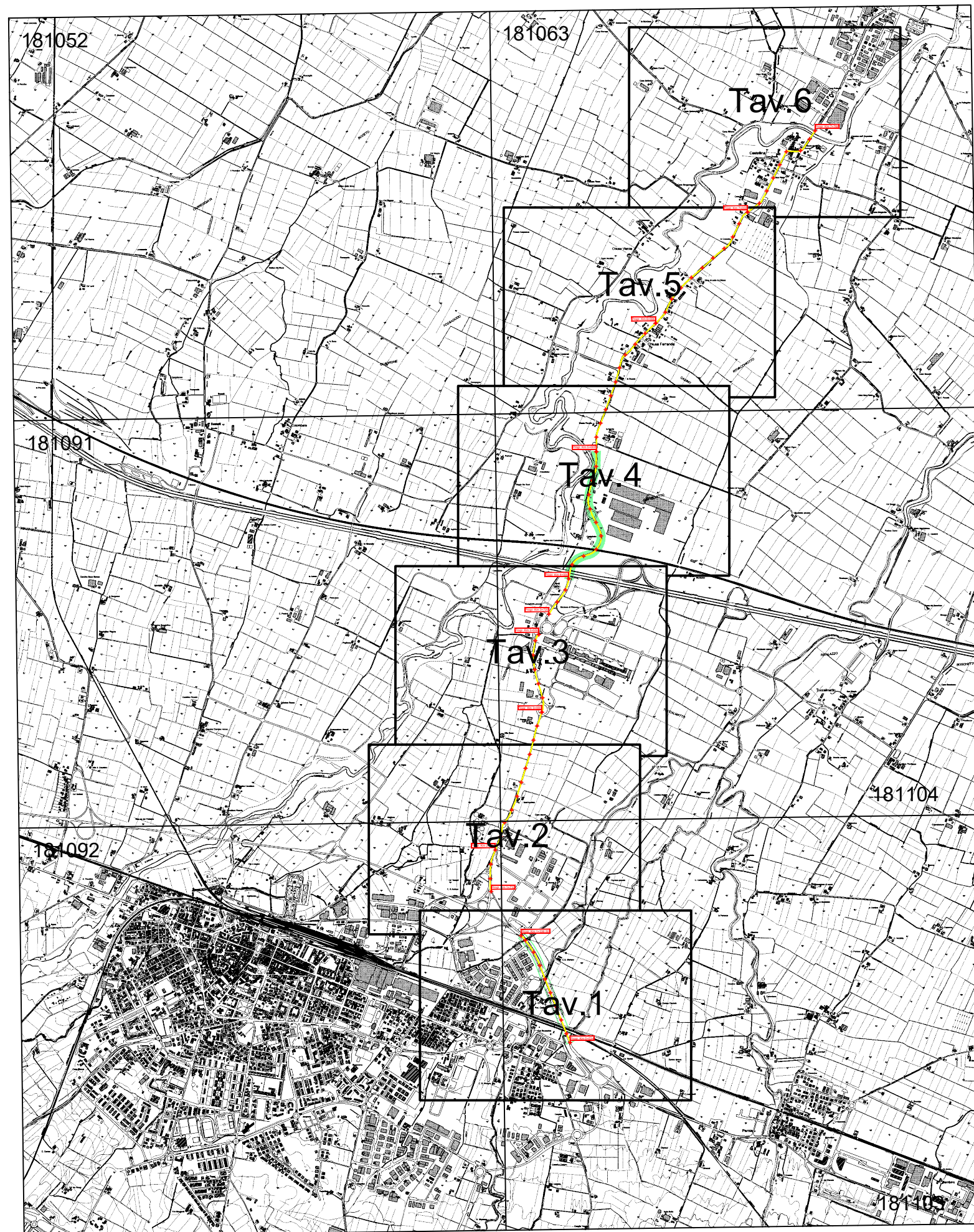
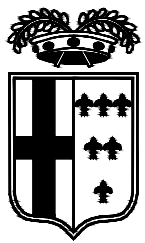
DESCRIZIONE	ELABORATO
<b>PLANIMETRIE: TRATTI DI INTERVENTO S.P. 12 DI SORAGNA</b>	<b>7.16</b>
SCALA	DATA
<b>1:5.000</b>	<b>FEBBRAIO 2024</b>

Il Responsabile del Servizio  
Ing. Gianpaolo Monteverdi

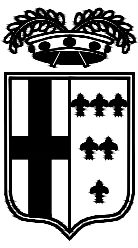
Il Responsabile del Procedimento  
Arch. Gloria Resteghini

Il Progettista  
Geom. Antonio Mesti

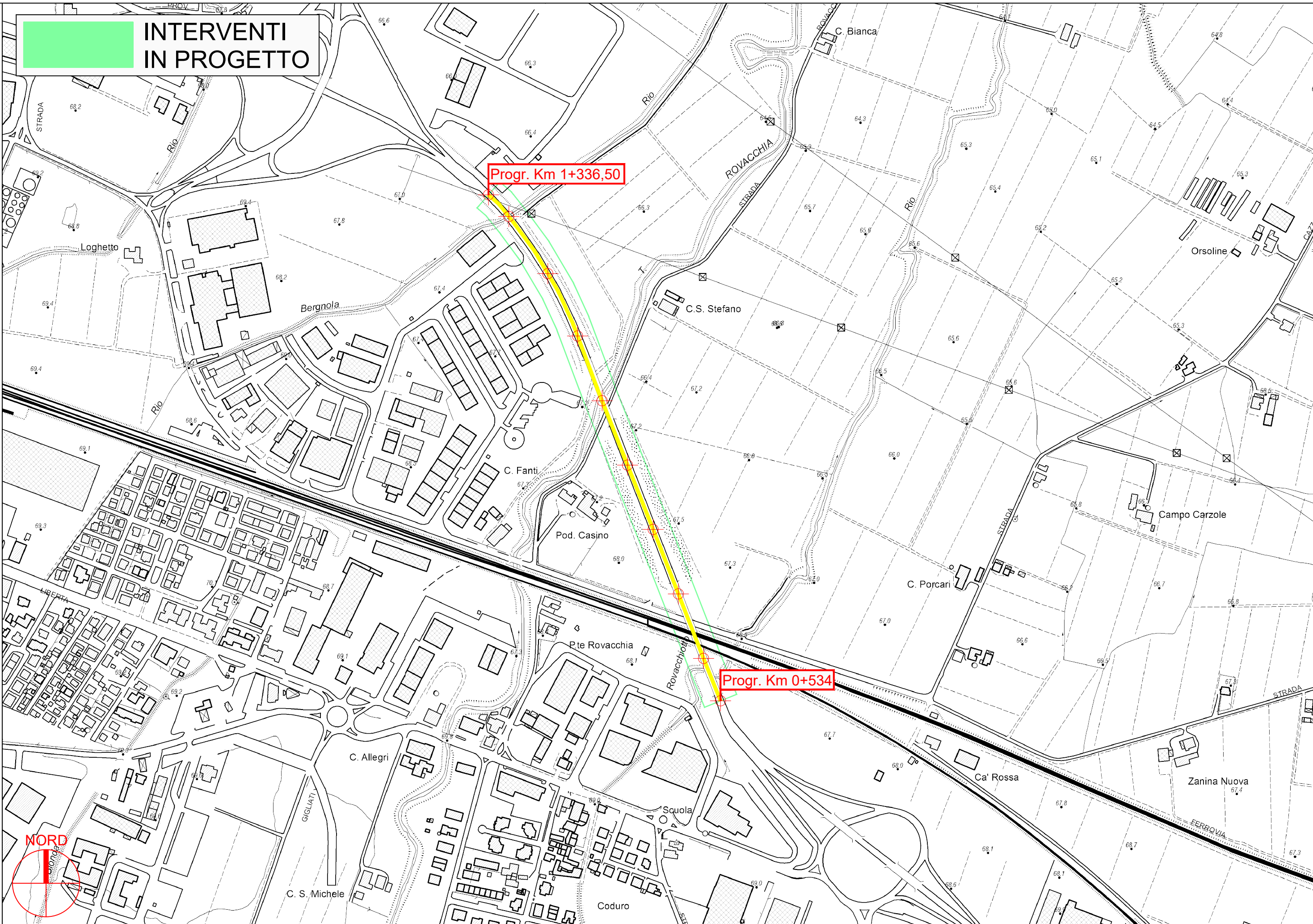
Il Coordinatore  
Geom. Antonio Mesti



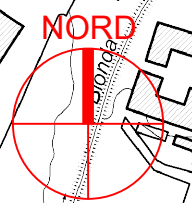


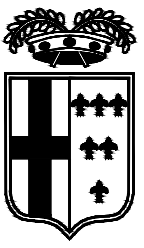


**INTERVENTI  
IN PROGETTO**

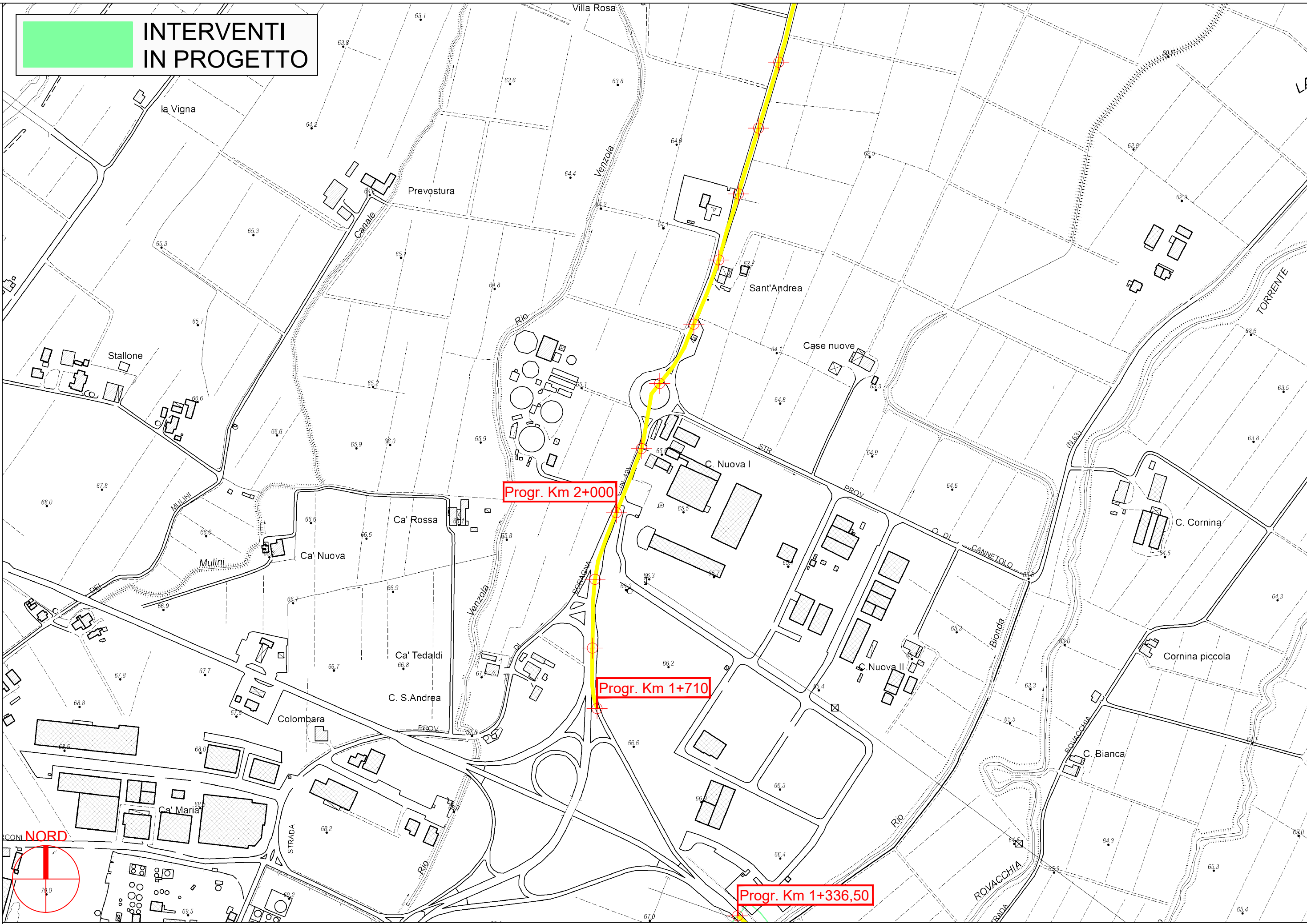


**PROVINCIA DI PARMA**



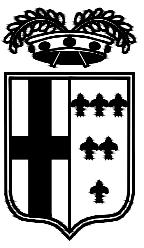


**INTERVENTI  
IN PROGETTO**

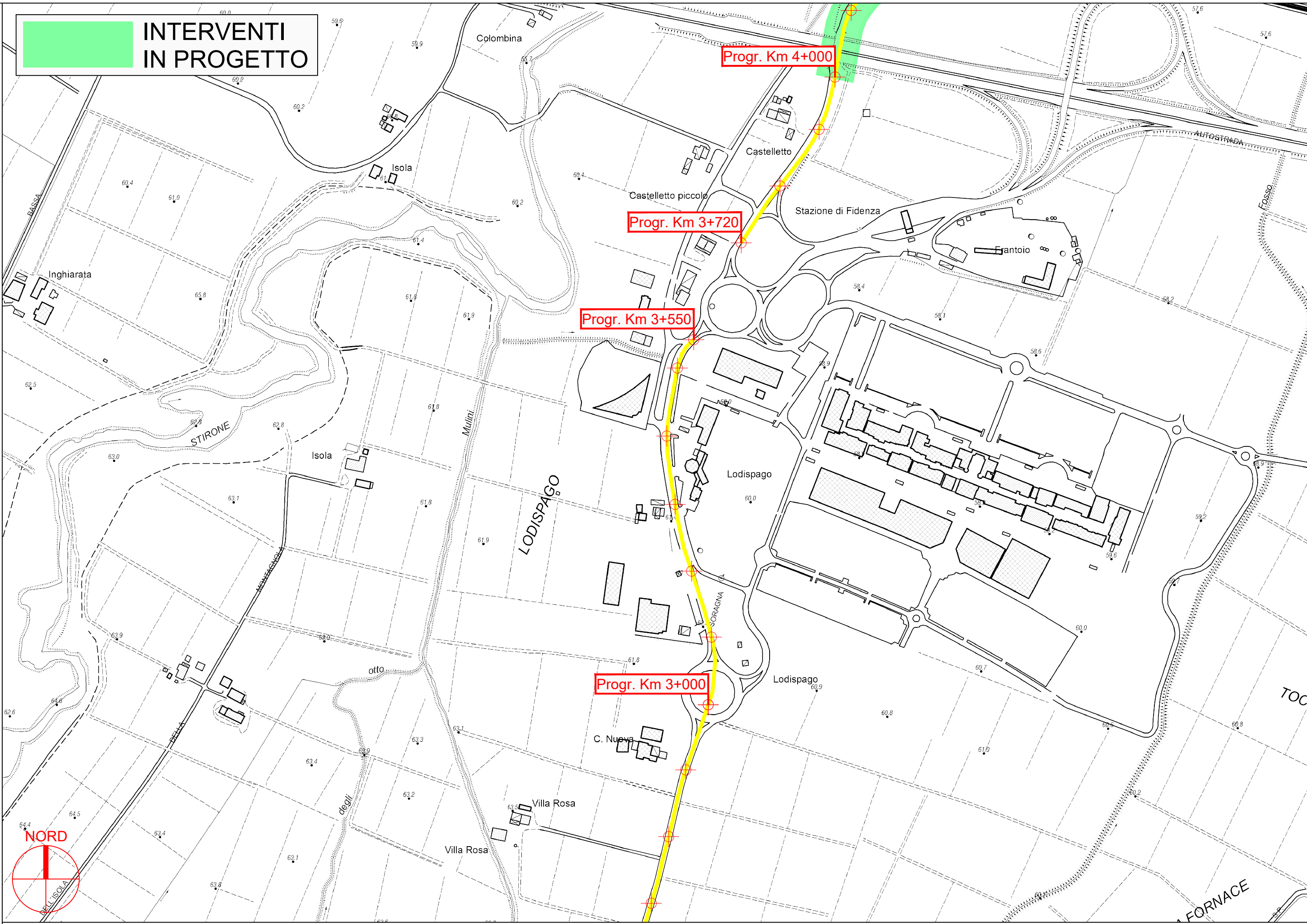


**PROVINCIA DI PARMA**



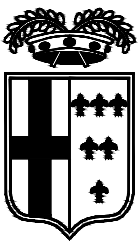


**INTERVENTI  
IN PROGETTO**

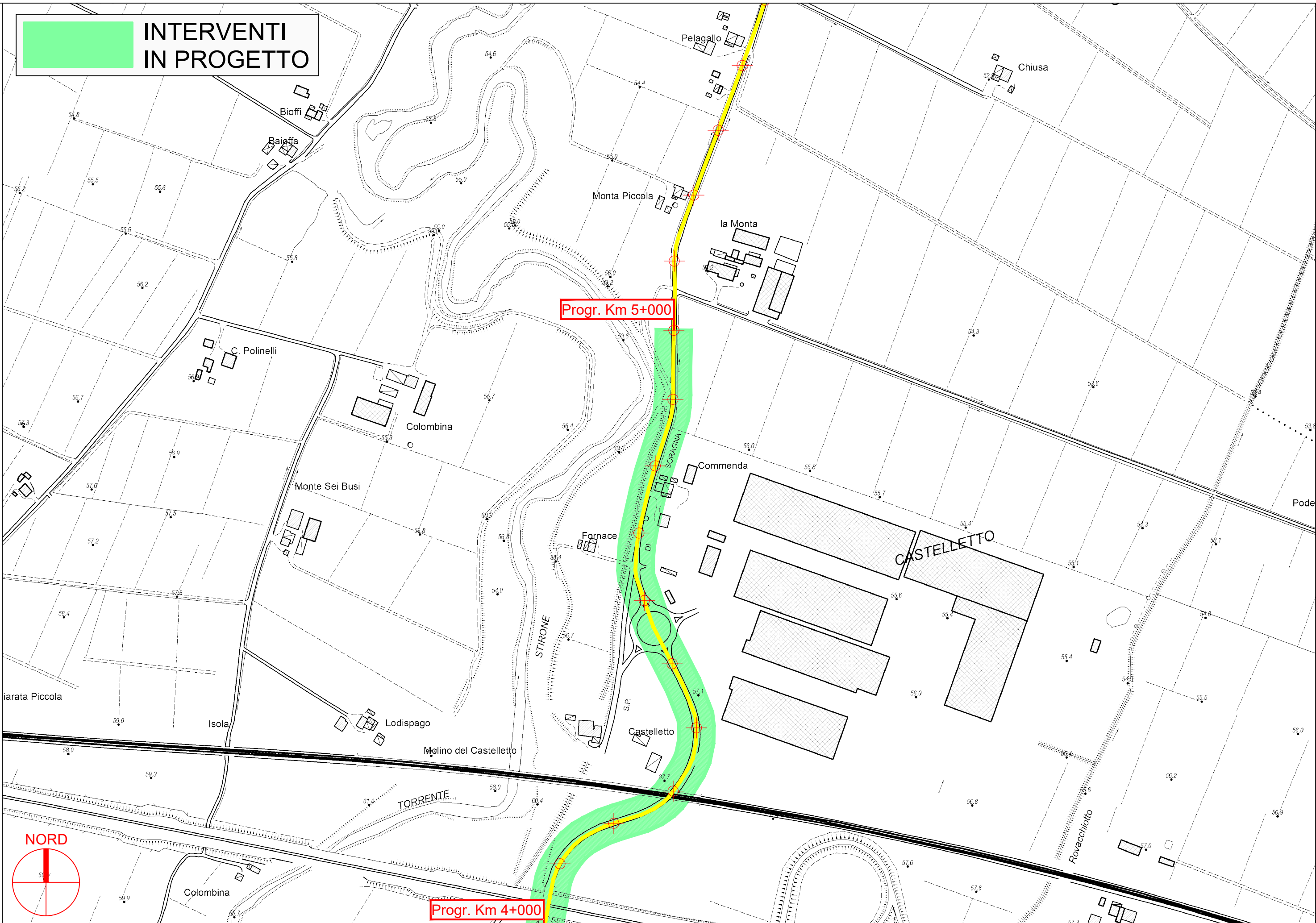


PROVINCIA DI PARMA





**INTERVENTI  
IN PROGETTO**

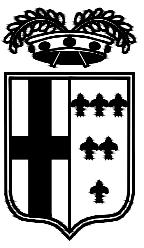


**PROVINCIA DI PARMA**

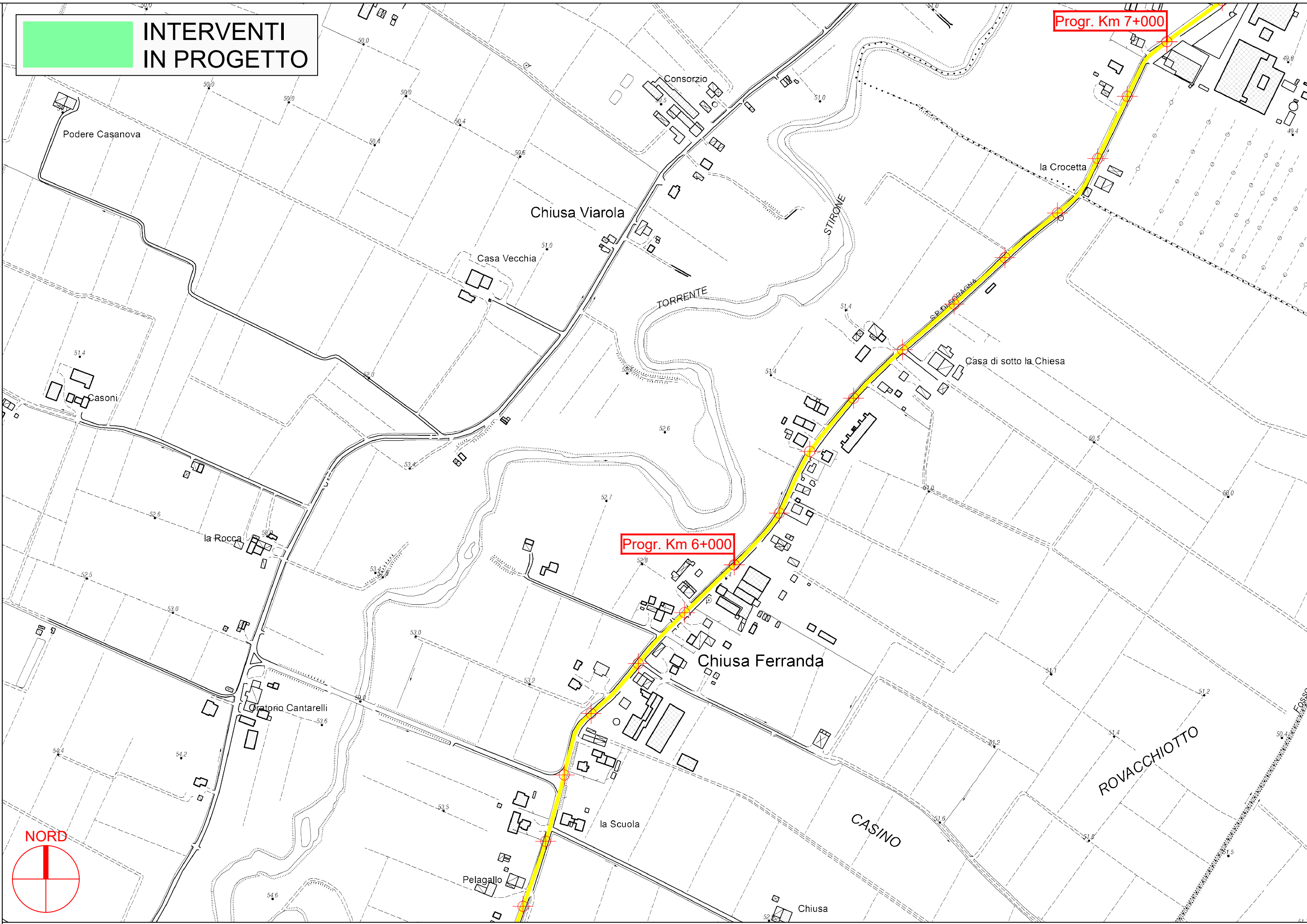


S.P. 12 di Soragna - Sviluppo chilometrico 6+968 km (come da delimitazione ANAS) Tavola 4 di 6 - Scala 1 : 5.000

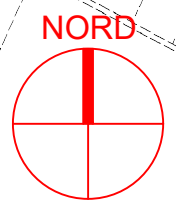


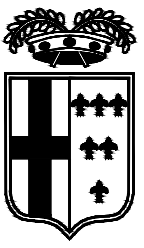


**INTERVENTI  
IN PROGETTO**

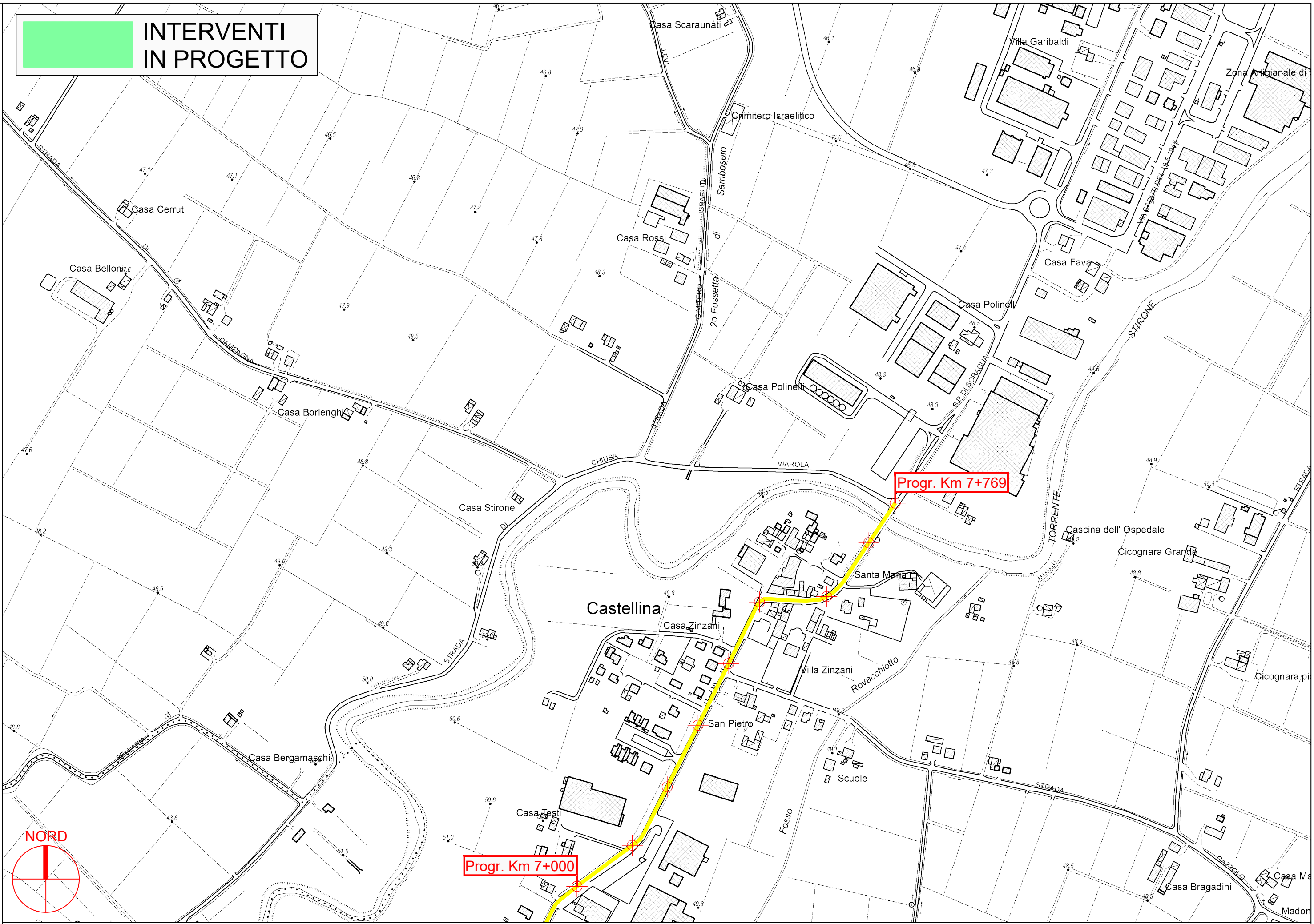


**PROVINCIA DI PARMA**





**INTERVENTI  
IN PROGETTO**



Progr. Km 7+769

Progr. Km 7+000



PROVINCIA DI PARMA