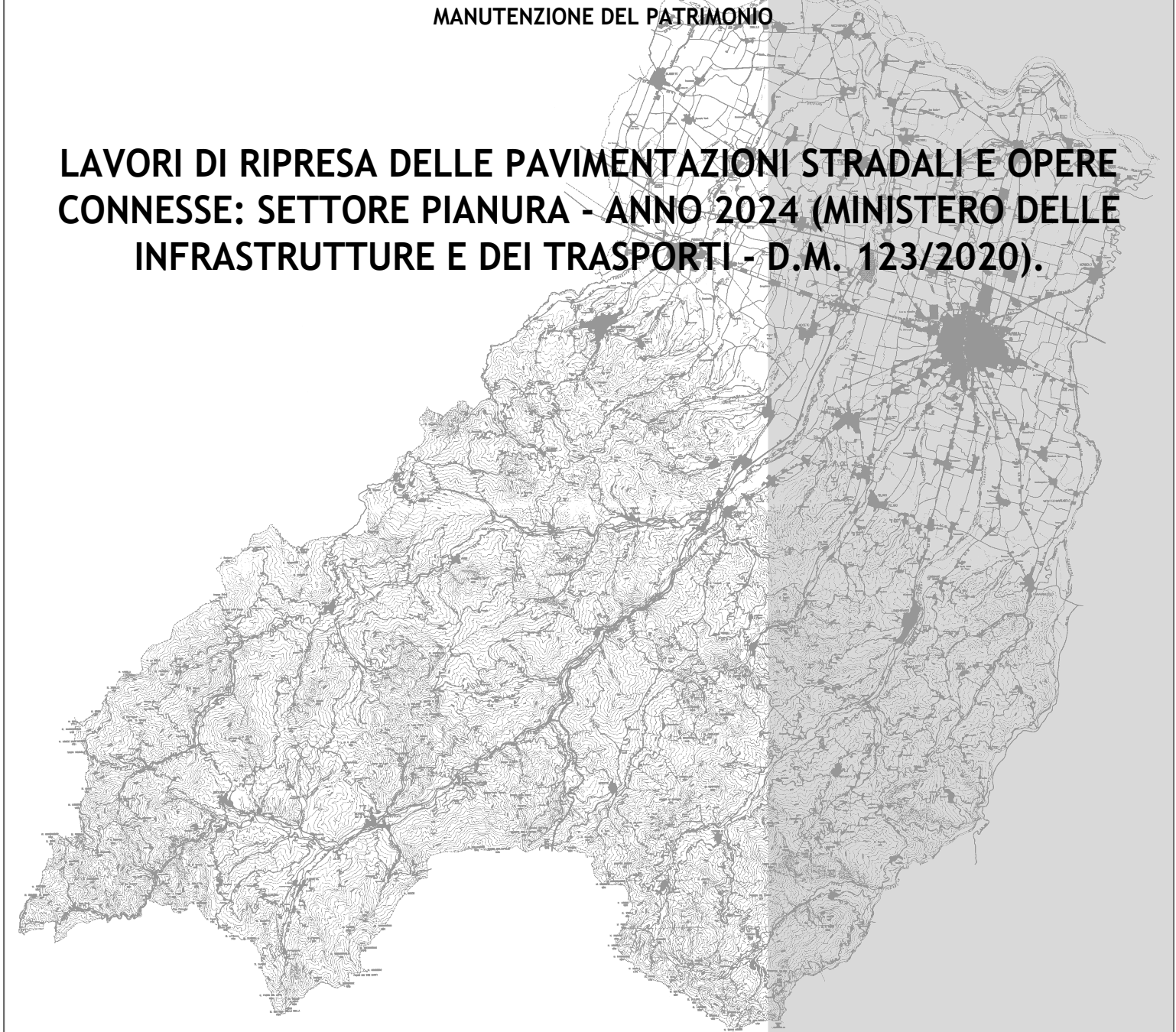




PROVINCIA DI PARMA
SERVIZIO VIABILITA' E INFRASTRUTTURE
TRASPORTI ECCEZIONALI - ESPROPRI - EDILIZIA SCOLASTICA
MANUTENZIONE DEL PATRIMONIO

**LAVORI DI RIPRESA DELLE PAVIMENTAZIONI STRADALI E OPERE
CONNESSE: SETTORE PIANURA - ANNO 2024 (MINISTERO DELLE
INFRASTRUTTURE E DEI TRASPORTI - D.M. 123/2020).**



PROGETTO DEFINITIVO-ESECUTIVO

| DESCRIZIONE | ELABORATO |
|---|-------------|
| PLANIMETRIE: TRATTI DI INTERVENTO S.P. 359R DI SALSOMAGGIORE E BARDI | 7.21 |

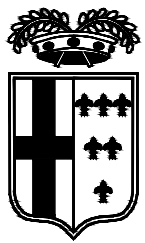
| SCALA | DATA |
|----------------|----------------------|
| 1:5.000 | FEBBRAIO 2024 |

Il Responsabile del Servizio
Ing. Gianpaolo Monteverdi

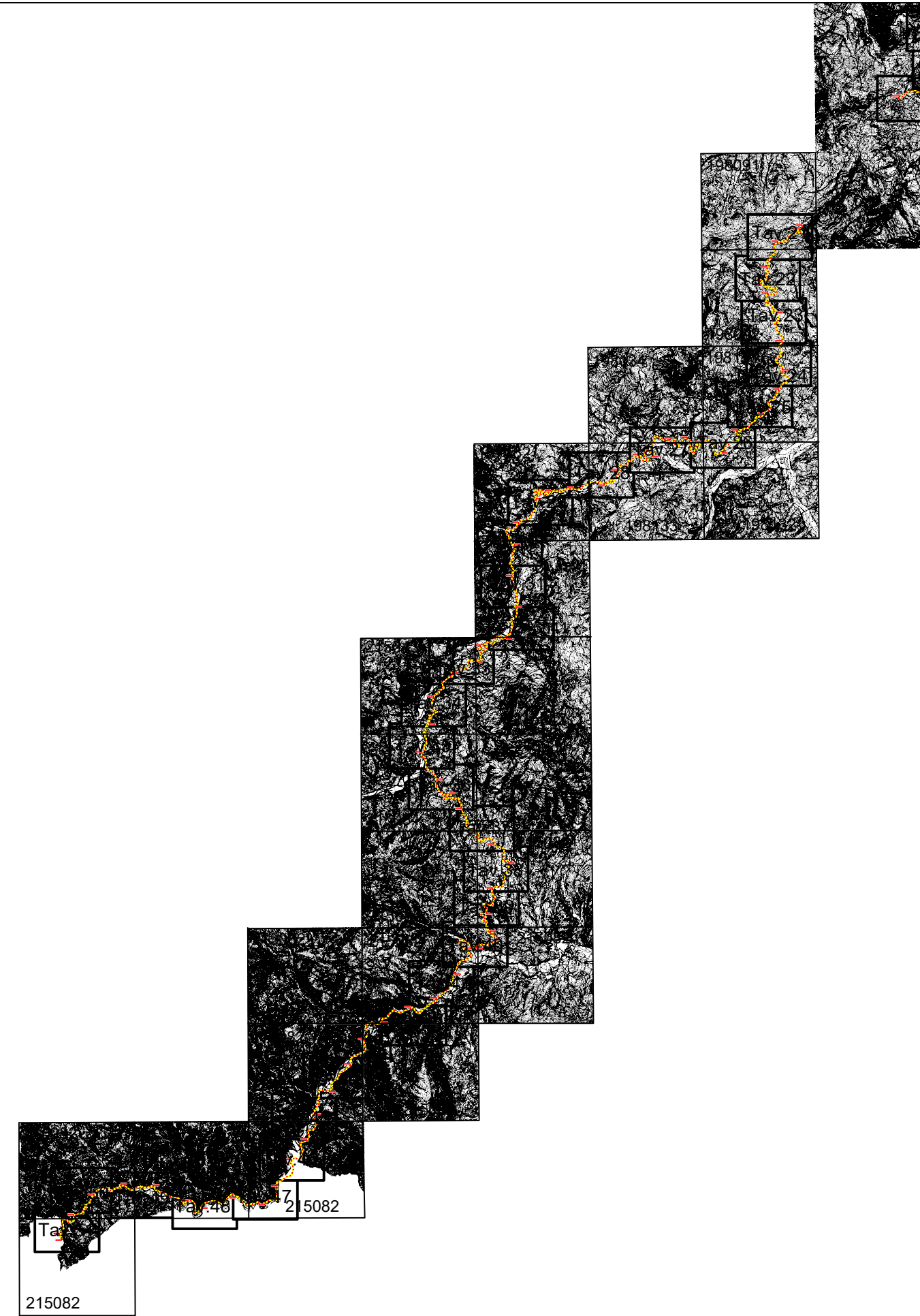
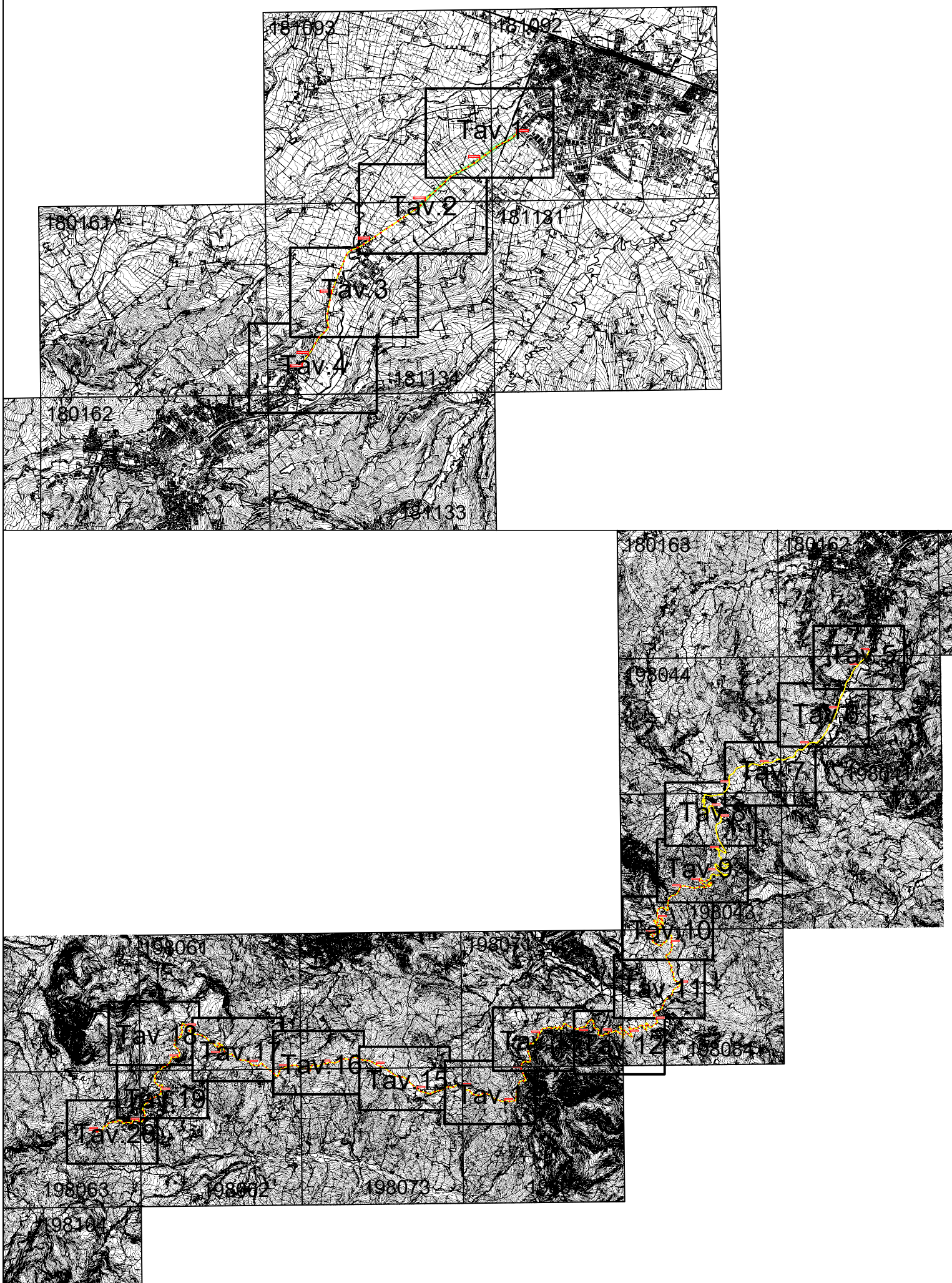
Il Responsabile del Procedimento
Arch. Gloria Resteghini

Il Progettista
Geom. Antonio Mesti

Il Coordinatore
Geom. Antonio Mesti

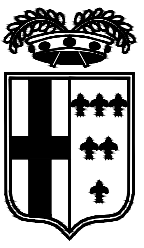


PROVINCIA DI PARMA

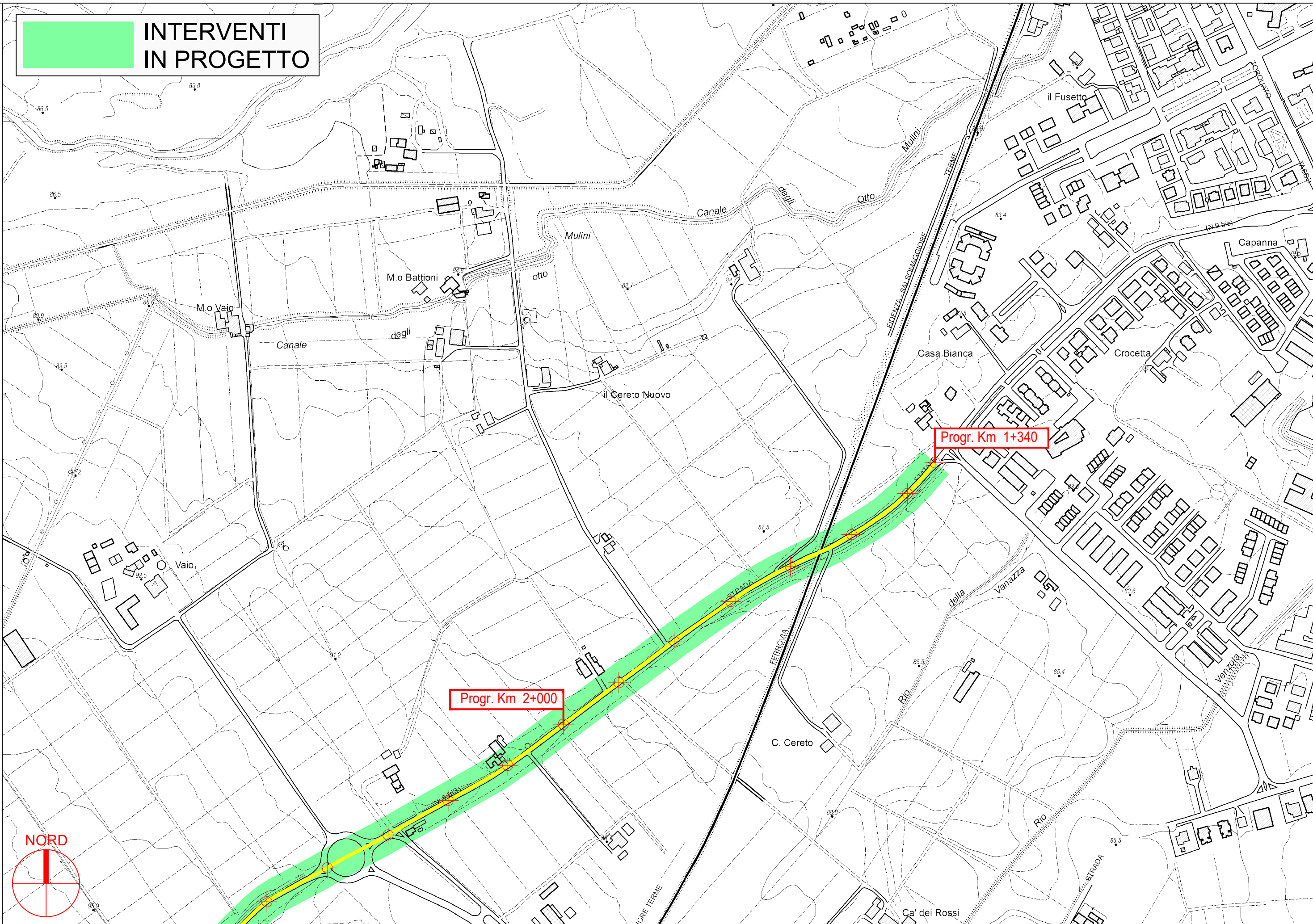


S.P. 359R di Salsomaggiore e Bardi - Sviluppo chilometrico 101+468 km

Inquadramento - Scala Adattata

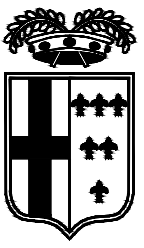


**INTERVENTI
IN PROGETTO**

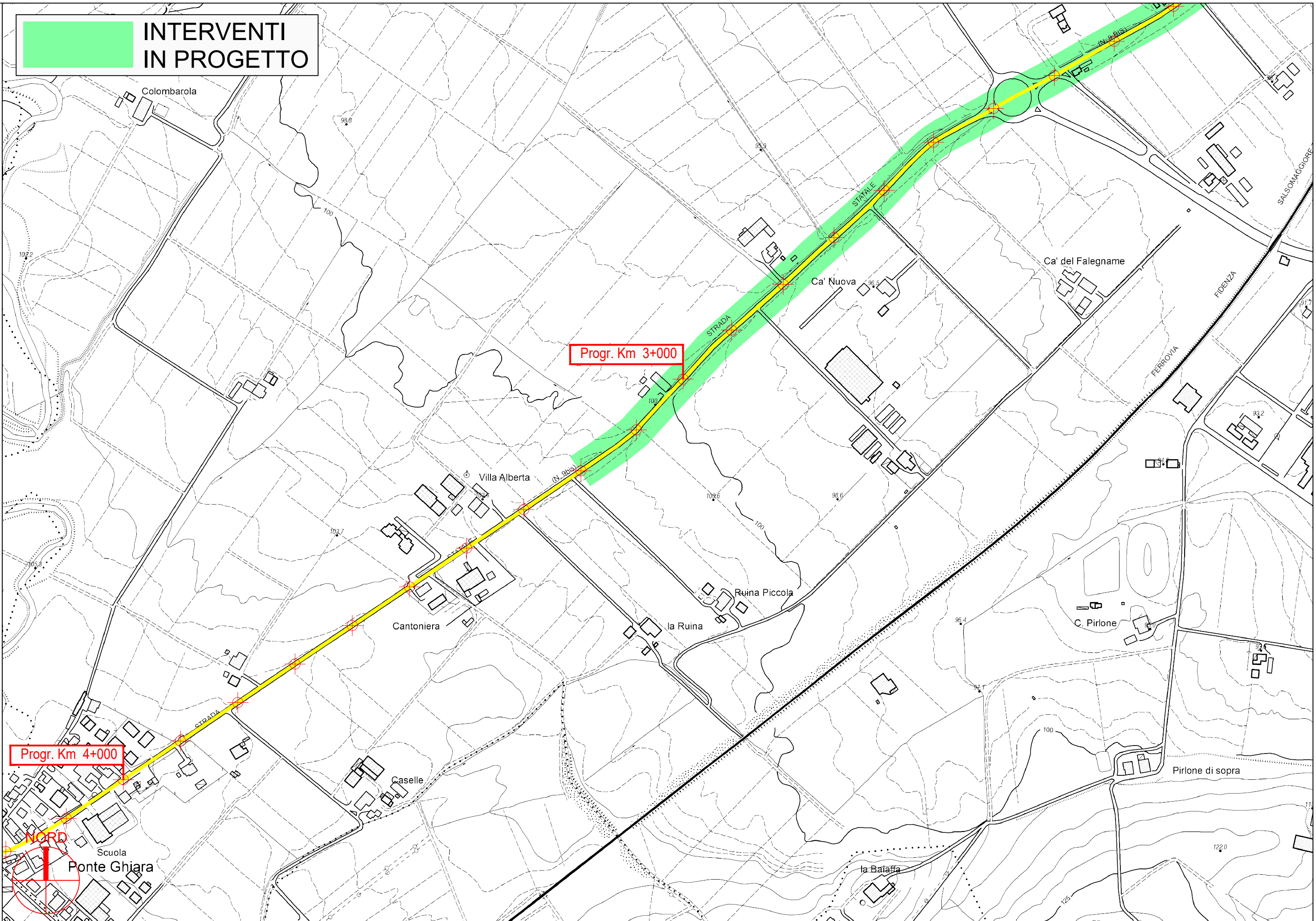


PROVINCIA DI PARMA





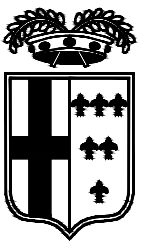
**INTERVENTI
IN PROGETTO**



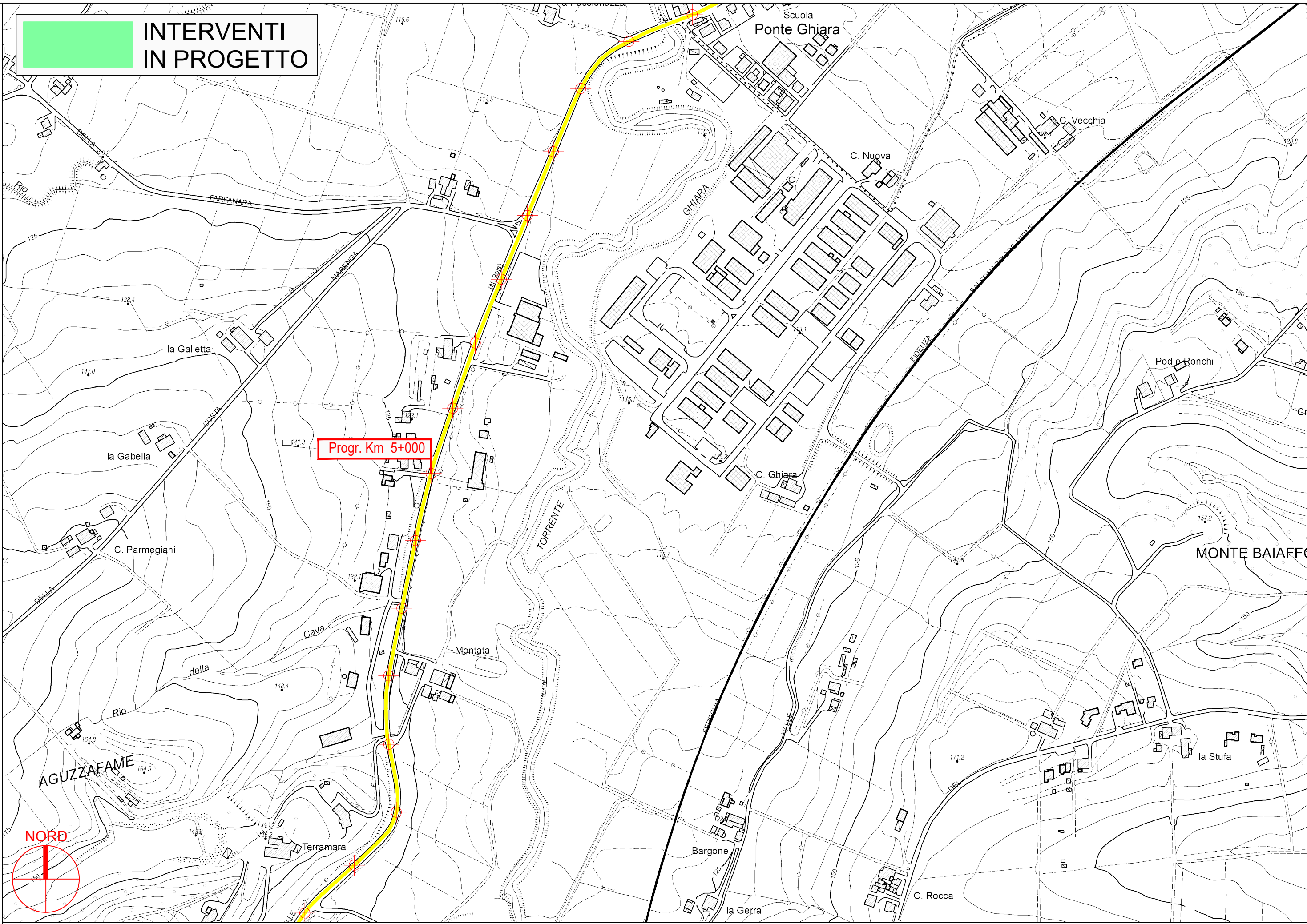
PROVINCIA DI PARMA

S.P. 359R di Salsomaggiore e Bardi - Sviluppo chilometrico 101+468 km

Tavola 2 di 51 - Scala 1 : 5.000

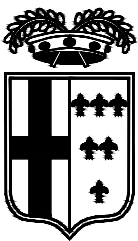


**INTERVENTI
IN PROGETTO**

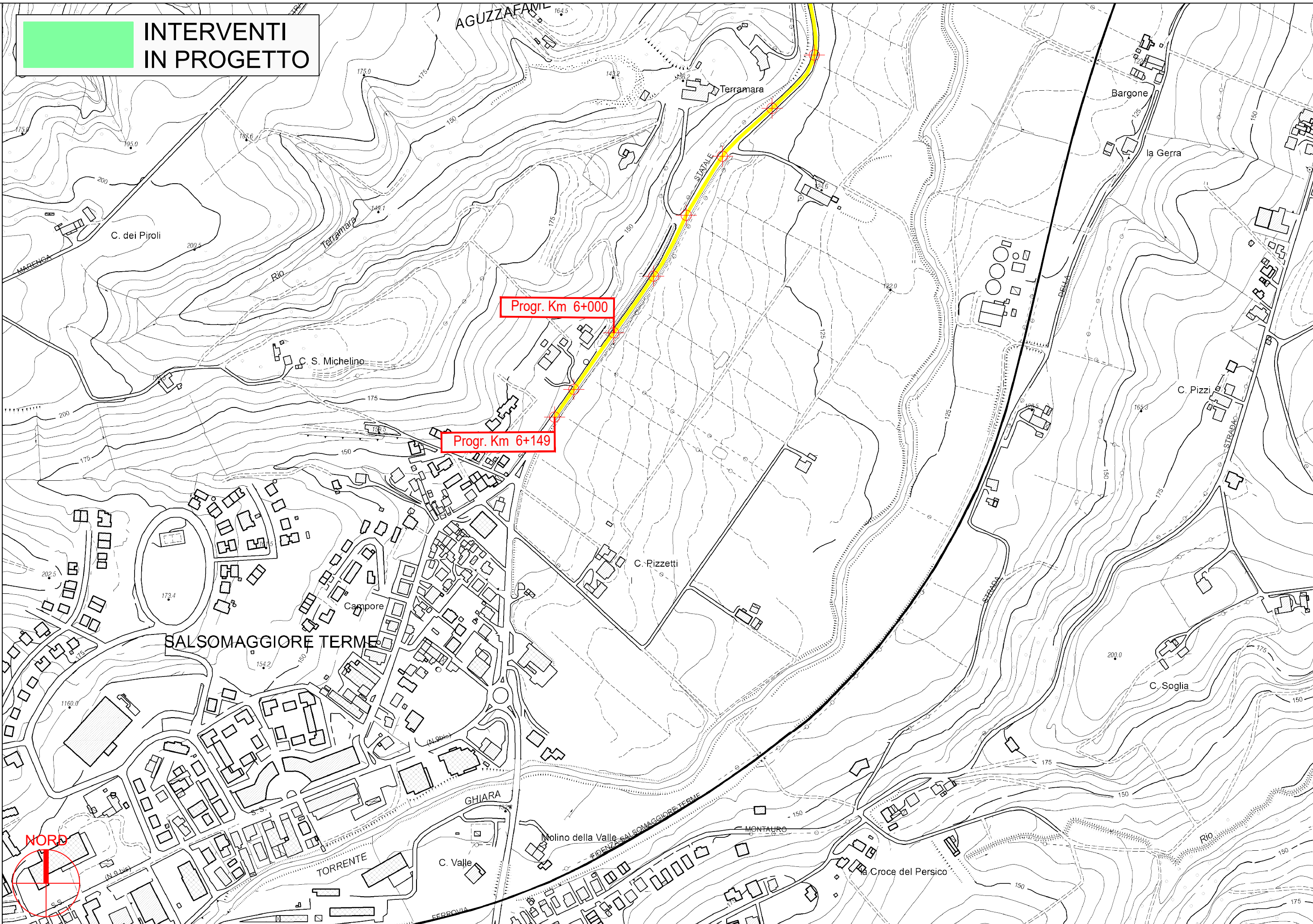


PROVINCIA DI PARMA





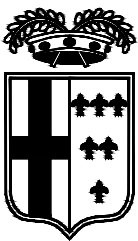
**INTERVENTI
IN PROGETTO**



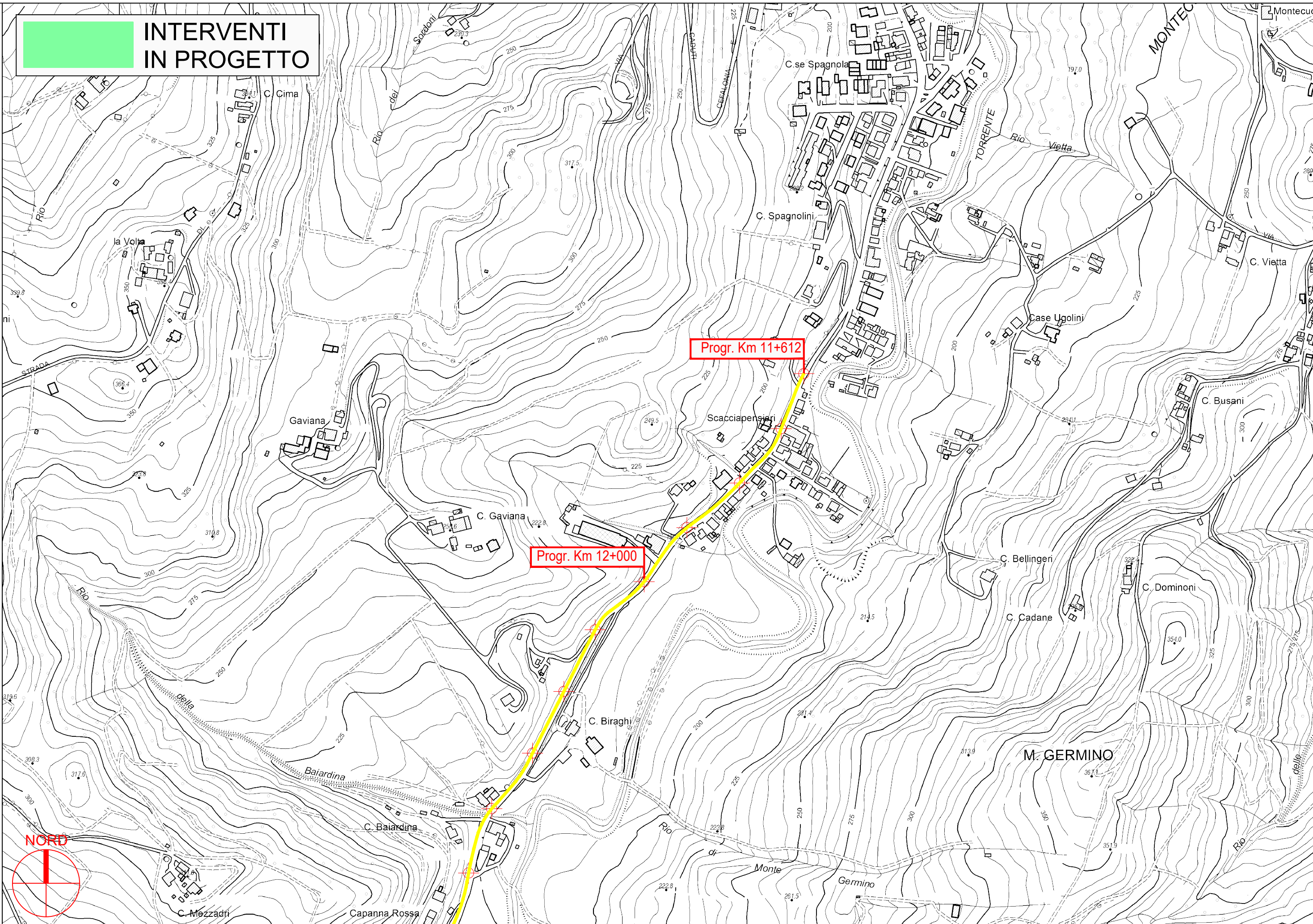
PROVINCIA DI PARMA

S.P. 359R di Salsomaggiore e Bardi - Sviluppo chilometrico 101+468 km

Tavola 4 di 51 - Scala 1 : 5.000



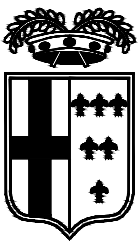
**INTERVENTI
IN PROGETTO**



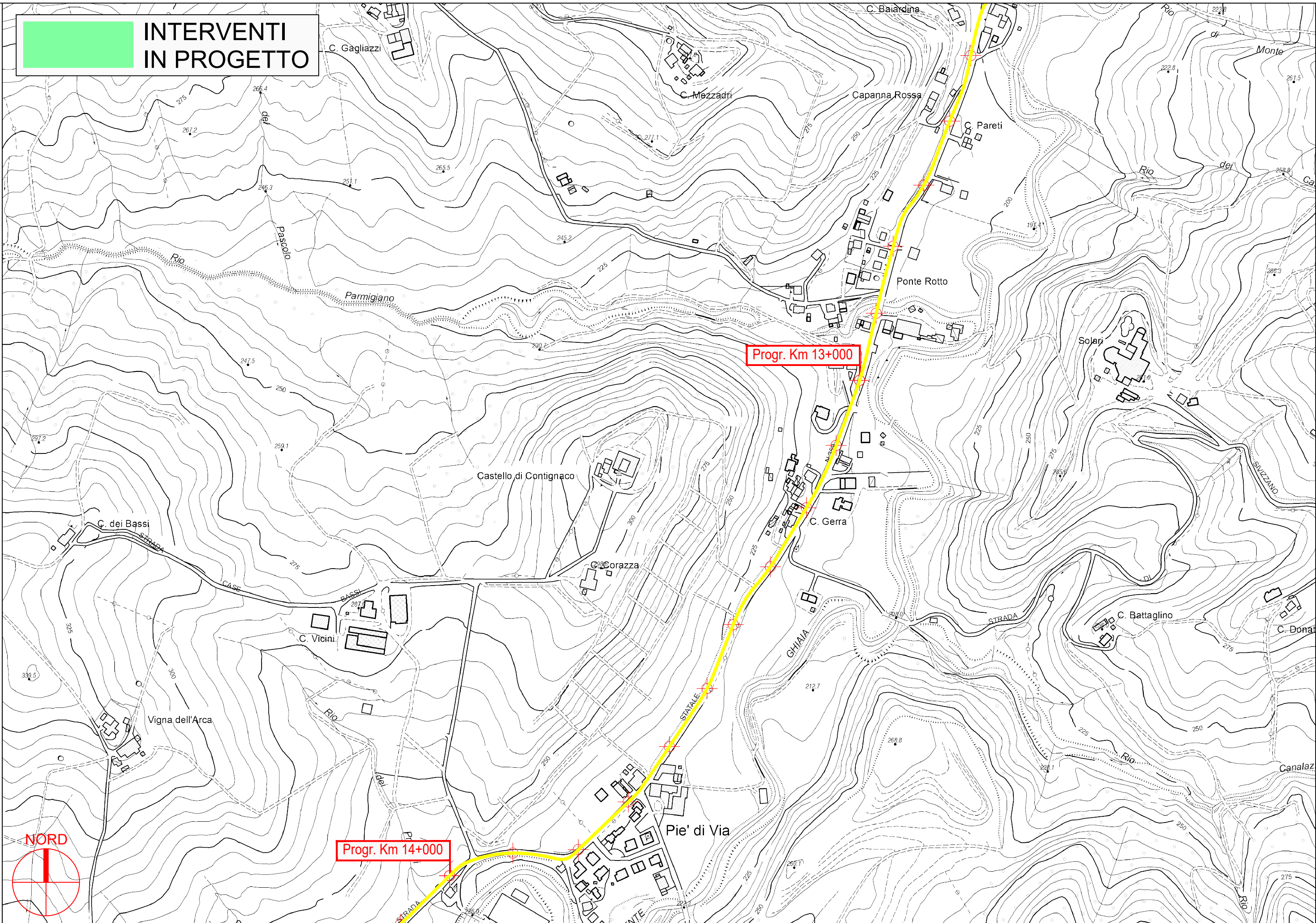
PROVINCIA DI PARMA

S.P. 359R di Salsomaggiore e Bardi - Sviluppo chilometrico 101+468 km

Tavola 5 di 51 - Scala 1 : 5.000



**INTERVENTI
IN PROGETTO**

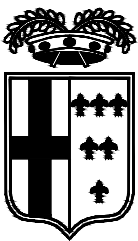


PROVINCIA DI PARMA



S.P. 359R di Salsomaggiore e Bardi - Sviluppo chilometrico 101+468 km

Tavola 6 di 51 - Scala 1 : 5.000



**INTERVENTI
IN PROGETTO**

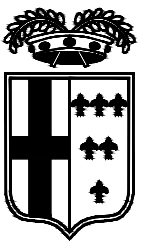
Progr. Km 14+000

Progr. Km 15+000

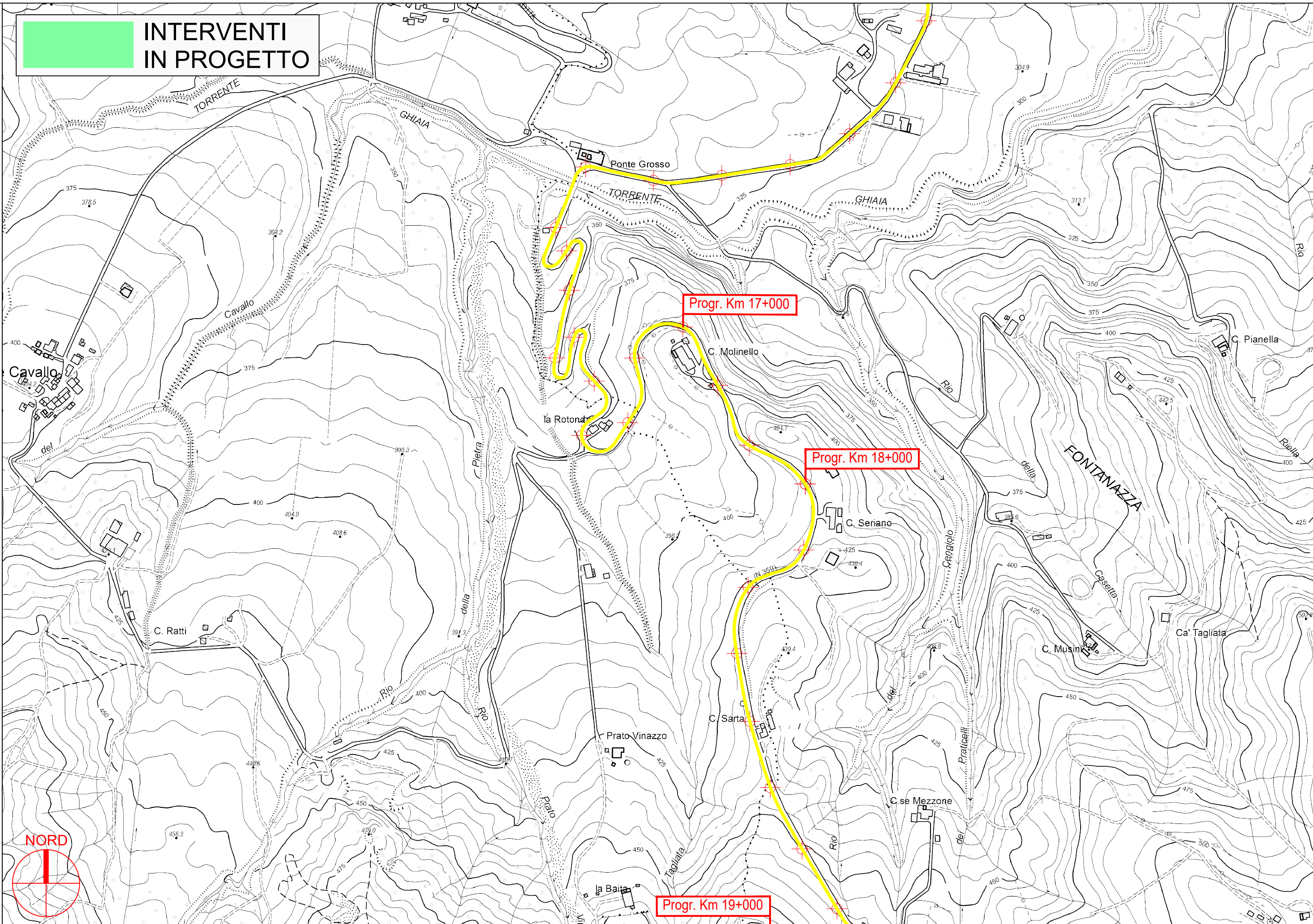
Km 16+000

PROVINCIA DI PARMA



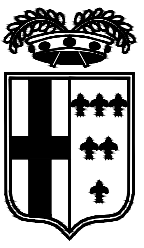


**INTERVENTI
IN PROGETTO**

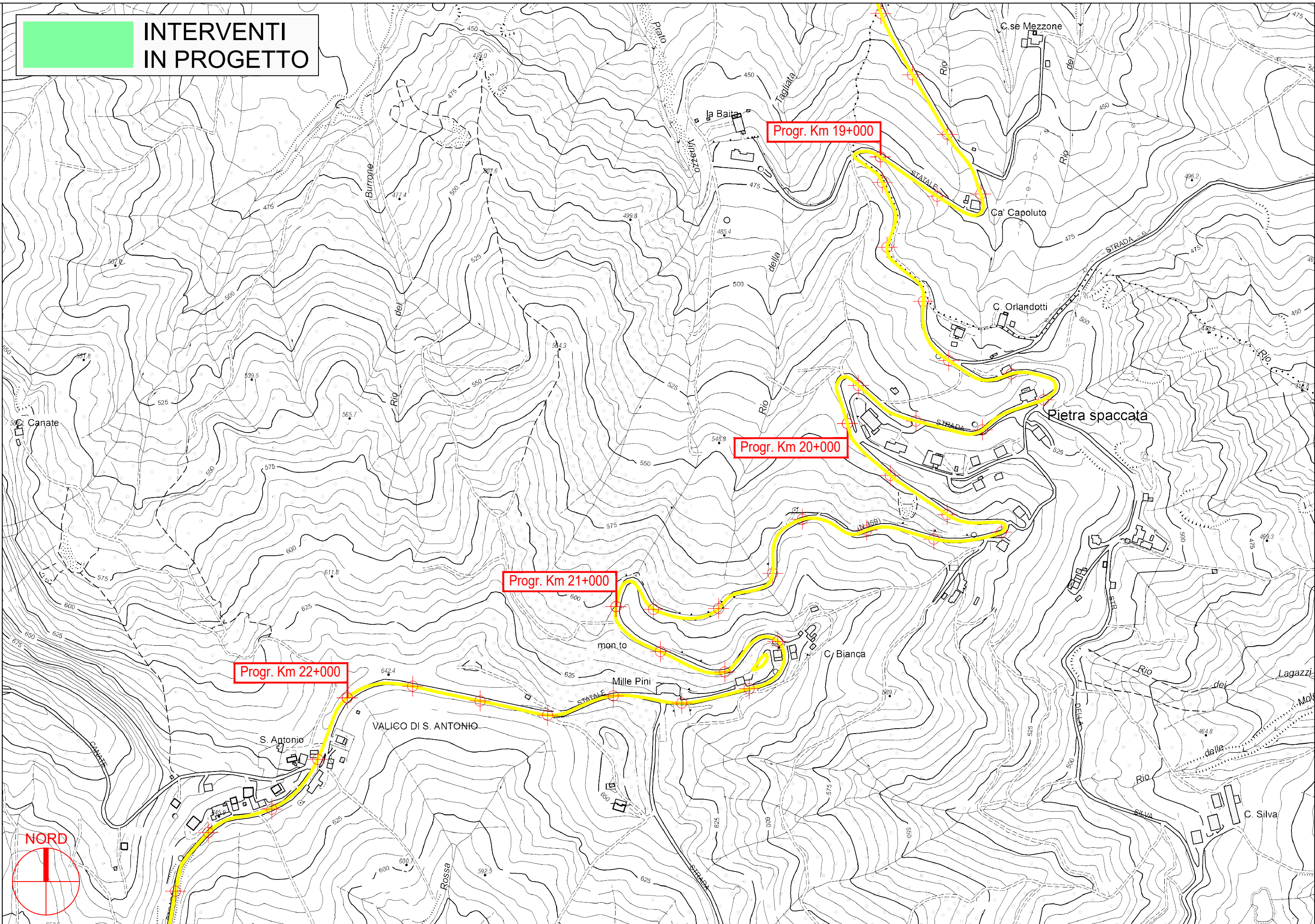


PROVINCIA DI PARMA

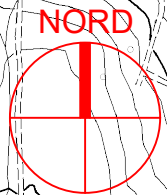


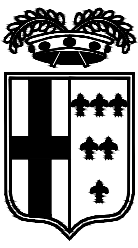


**INTERVENTI
IN PROGETTO**

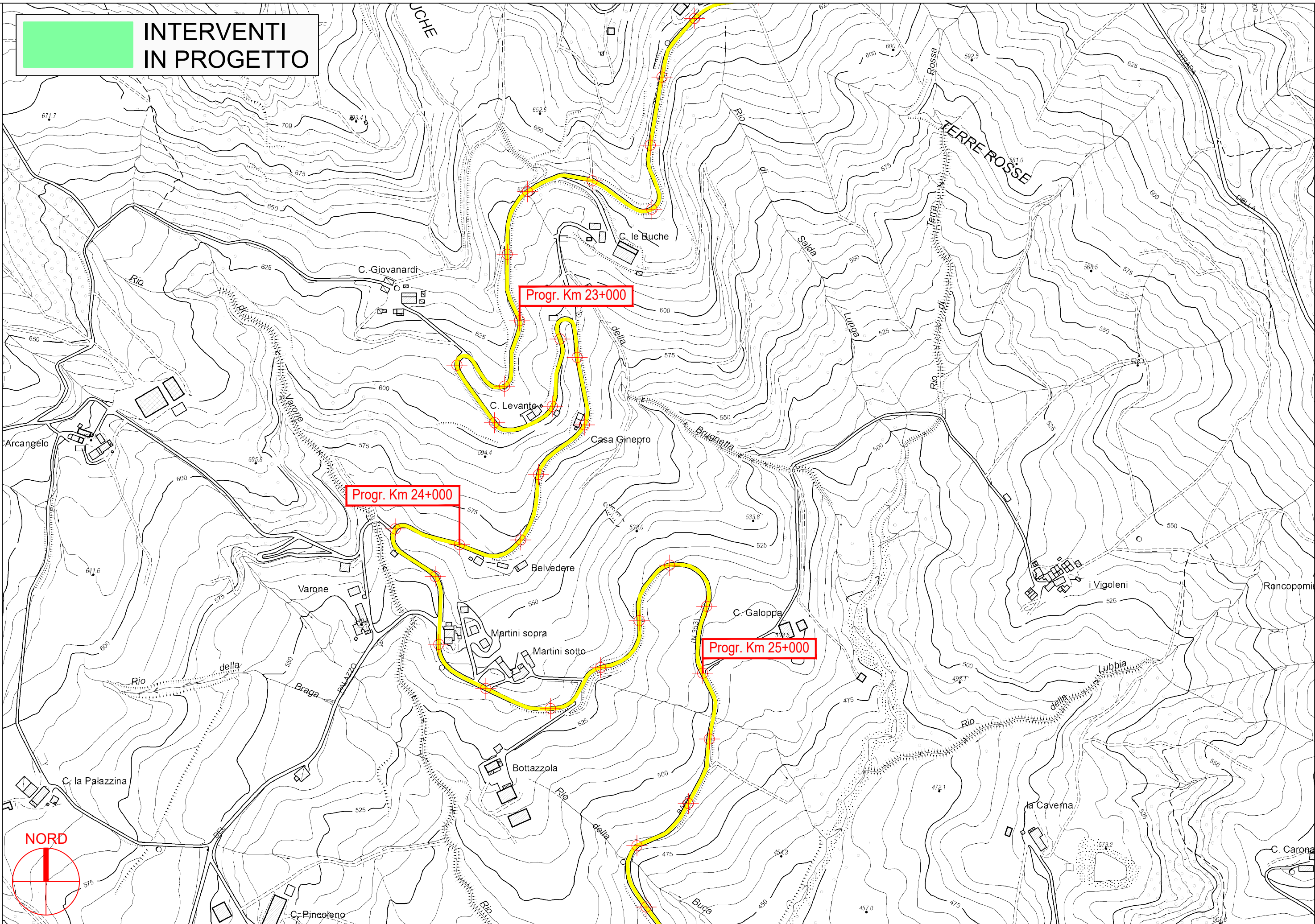


PROVINCIA DI PARMA





**INTERVENTI
IN PROGETTO**

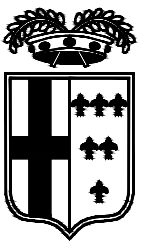


PROVINCIA DI PARMA

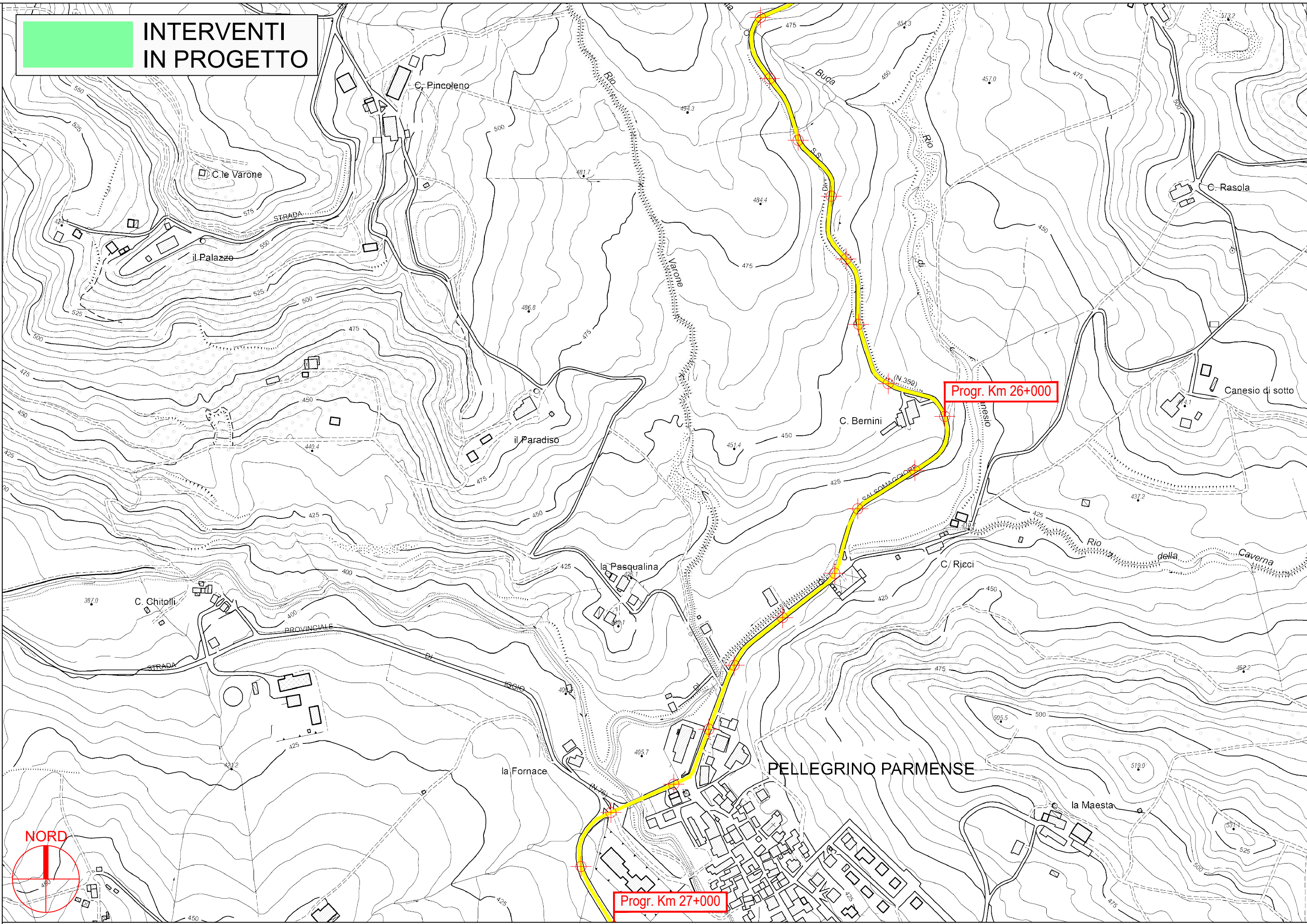


S.P. 359R di Salsomaggiore e Bardi - Sviluppo chilometrico 101+468 km

Tavola 10 di 51 - Scala 1 : 5.000



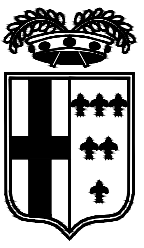
**INTERVENTI
IN PROGETTO**



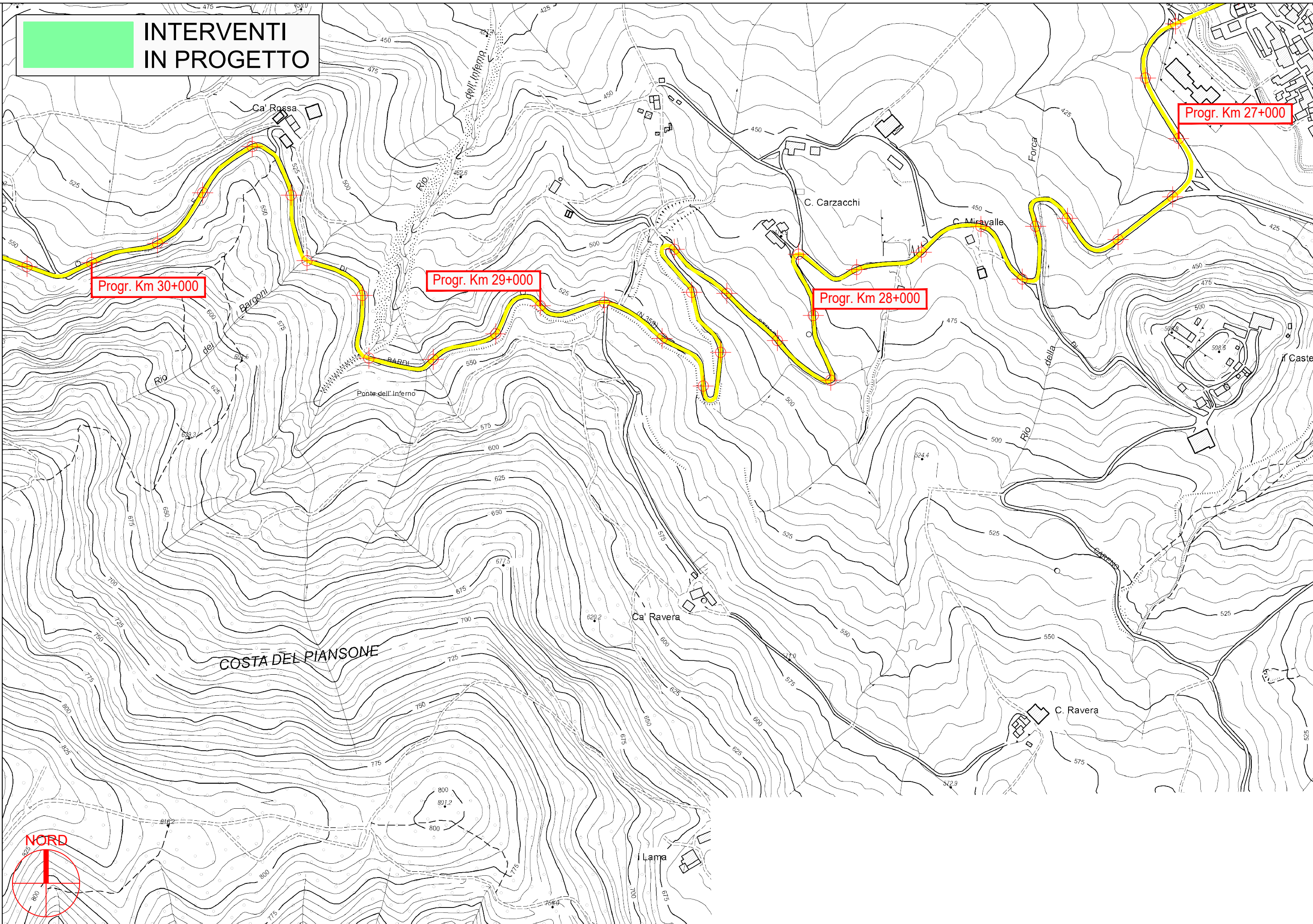
Progr. Km 26+000

Progr. Km 27+000

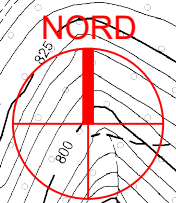
PROVINCIA DI PARMA



**INTERVENTI
IN PROGETTO**

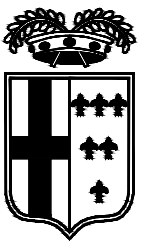


PROVINCIA DI PARMA

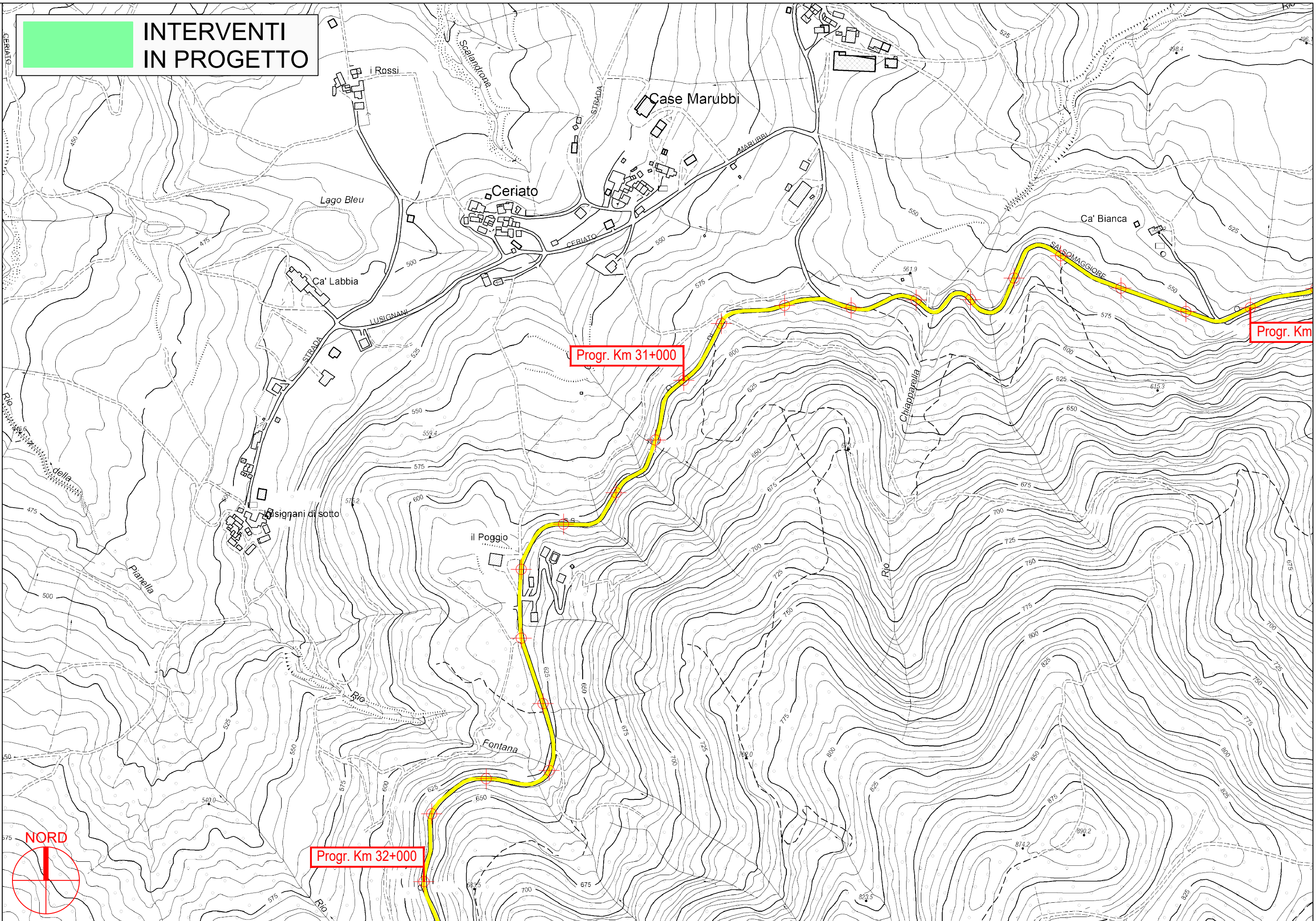


S.P. 359R di Salsomaggiore e Bardi - Sviluppo chilometrico 101+468 km

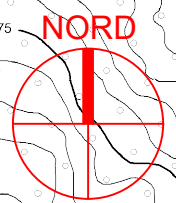
Tavola 12 di 51 - Scala 1 : 5.000

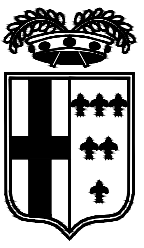


**INTERVENTI
IN PROGETTO**

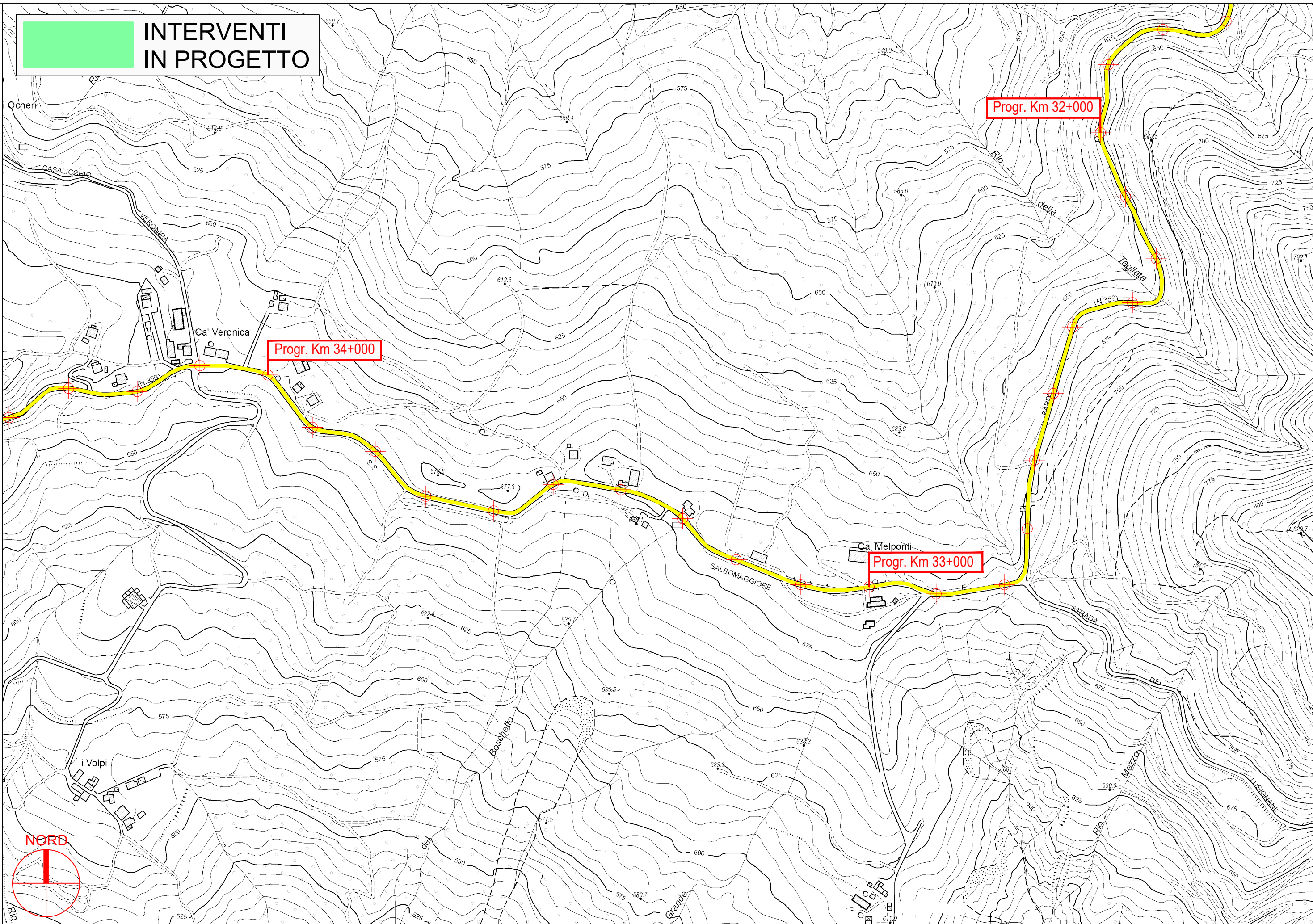


PROVINCIA DI PARMA

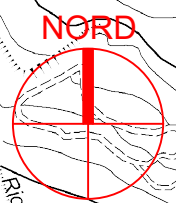


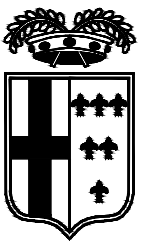


**INTERVENTI
IN PROGETTO**

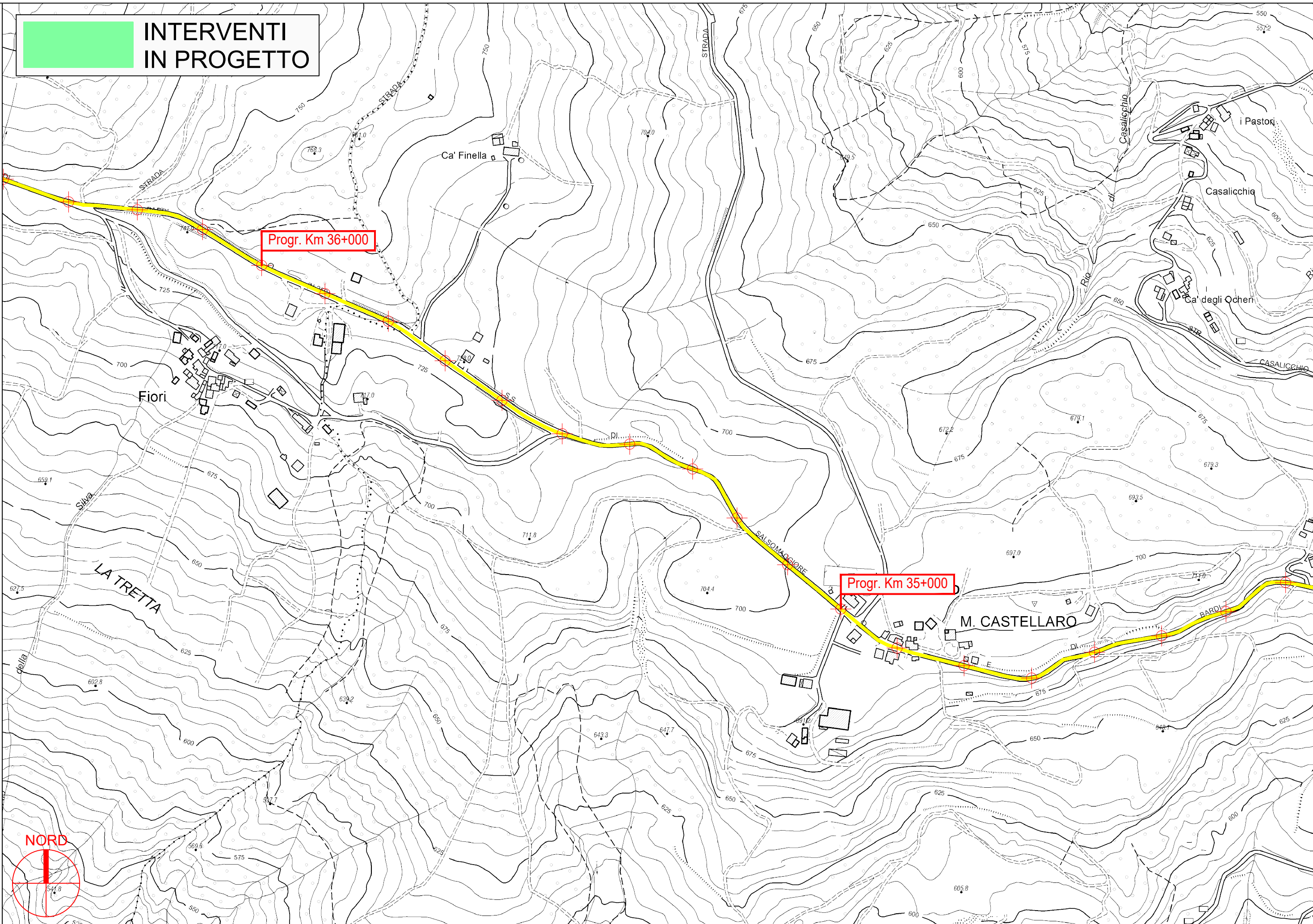


PROVINCIA DI PARMA

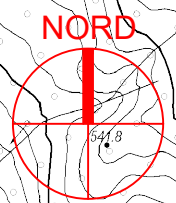


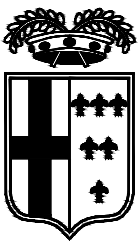


**INTERVENTI
IN PROGETTO**

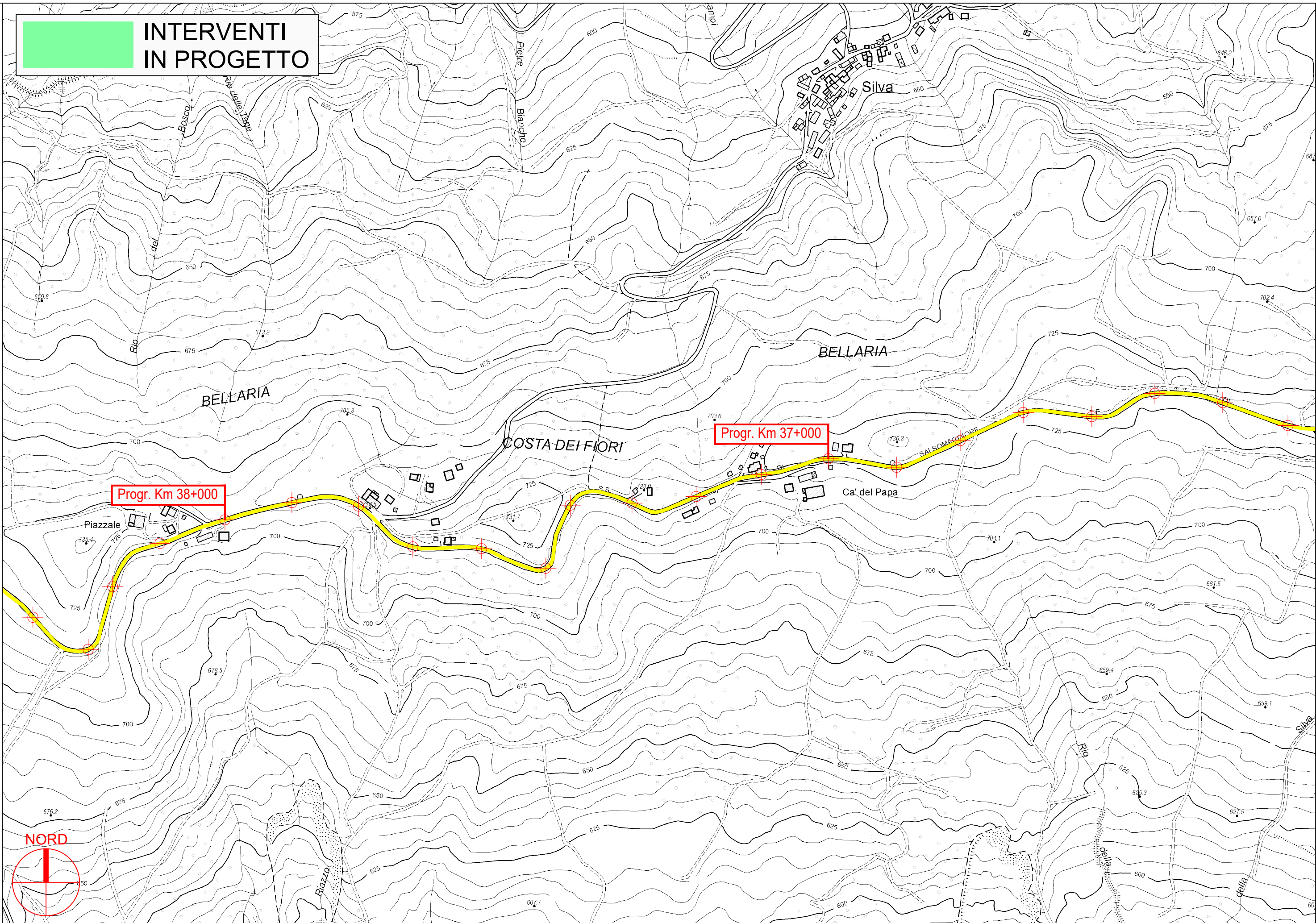


PROVINCIA DI PARMA





**INTERVENTI
IN PROGETTO**

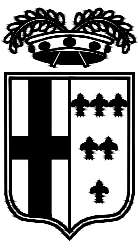


PROVINCIA DI PARMA



S.P. 359R di Salsomaggiore e Bardi - Sviluppo chilometrico 101+468 km

Tavola 16 di 51 - Scala 1 : 5.000



**INTERVENTI
IN PROGETTO**

m 41+000

Progr. Km 40+000

Progr. Km 39+000

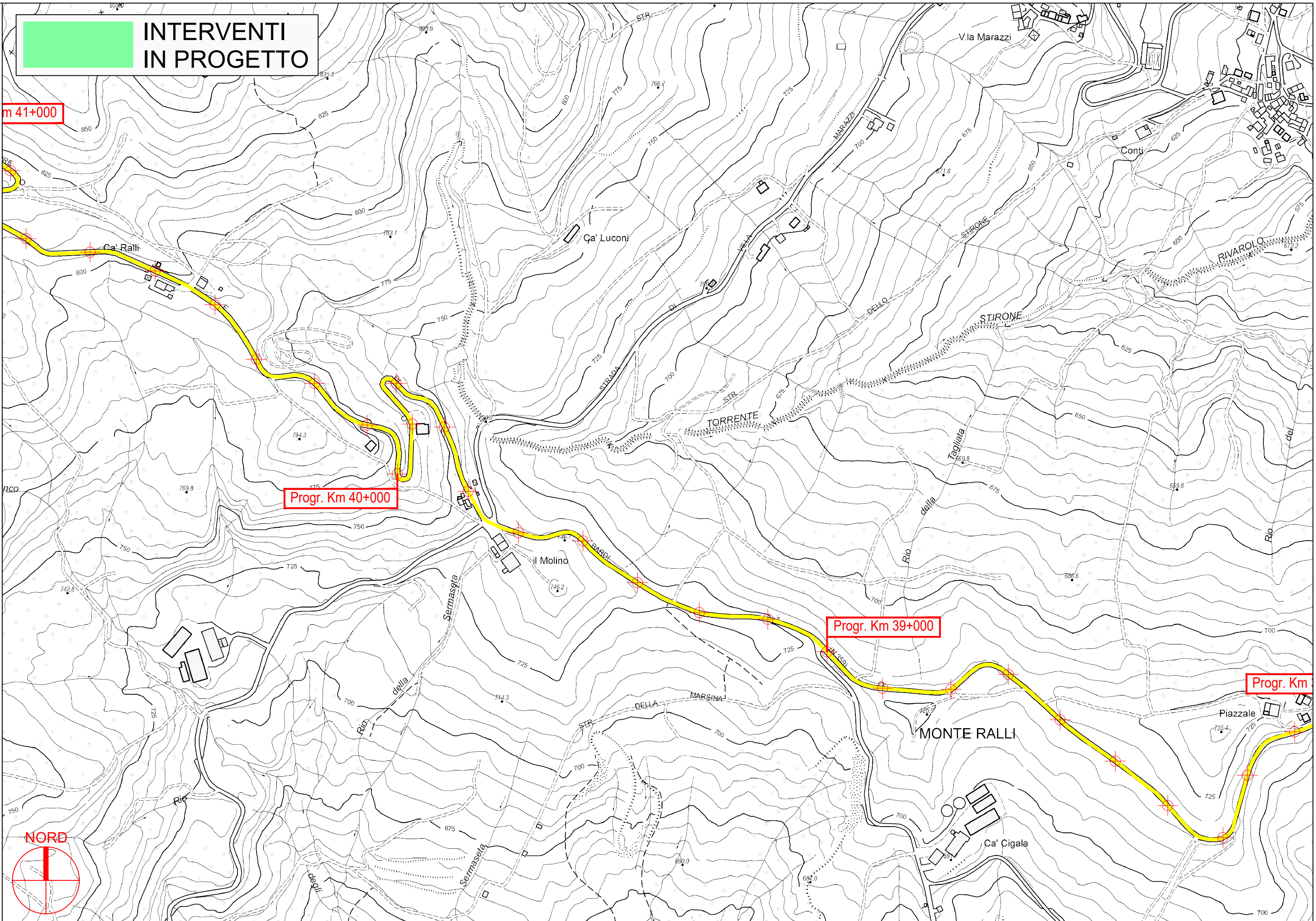
Progr. Km

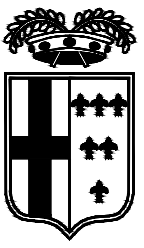
PROVINCIA DI PARMA



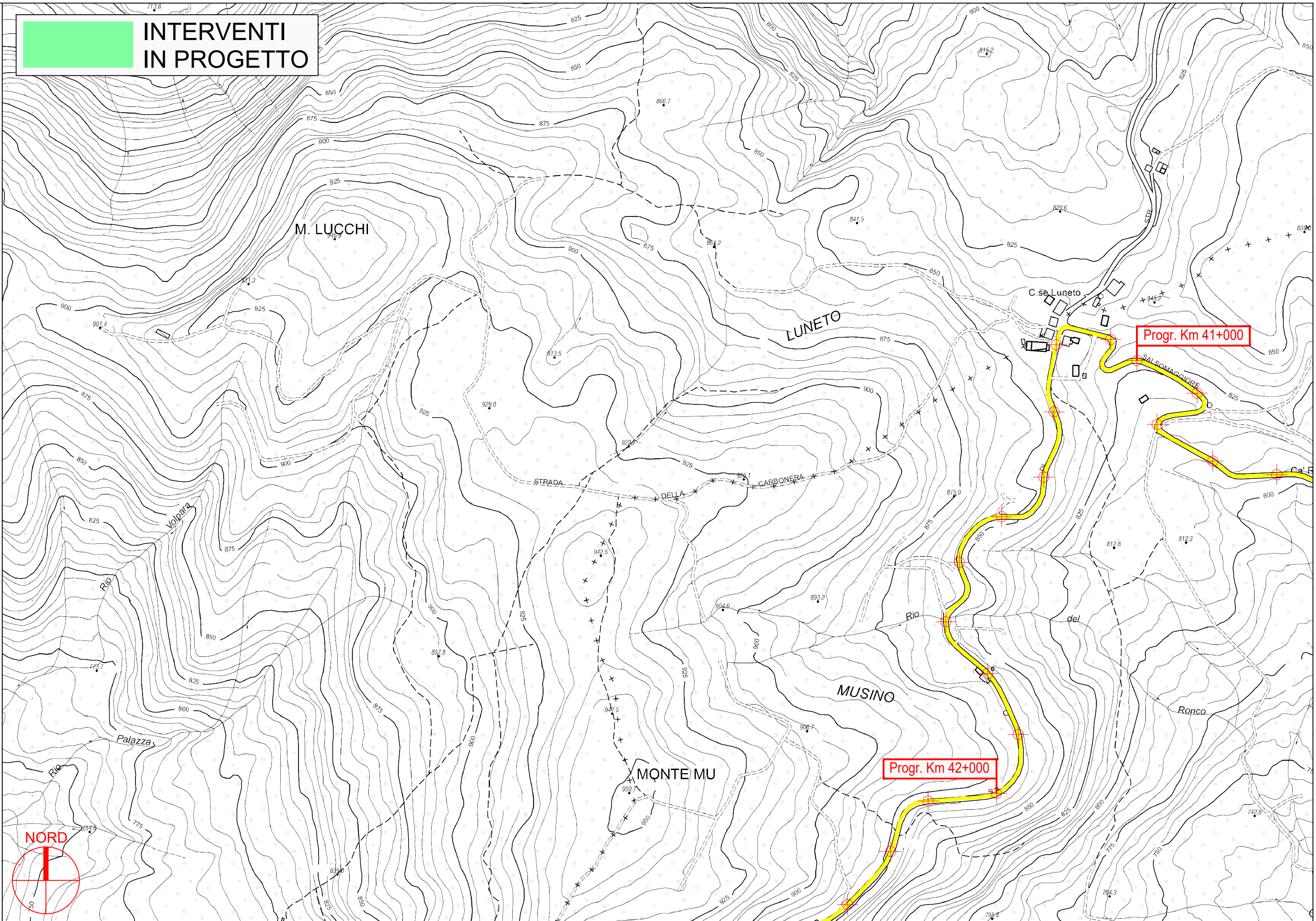
S.P. 359R di Salsomaggiore e Bardi - Sviluppo chilometrico 101+468 km

Tavola 17 di 51 - Scala 1 : 5.000





**INTERVENTI
IN PROGETTO**



PROVINCIA DI PARMA

S.P. 359R di Salsomaggiore e Bardi - Sviluppo chilometrico 101+468 km

Tavola 18 di 51 - Scala 1 : 5.000