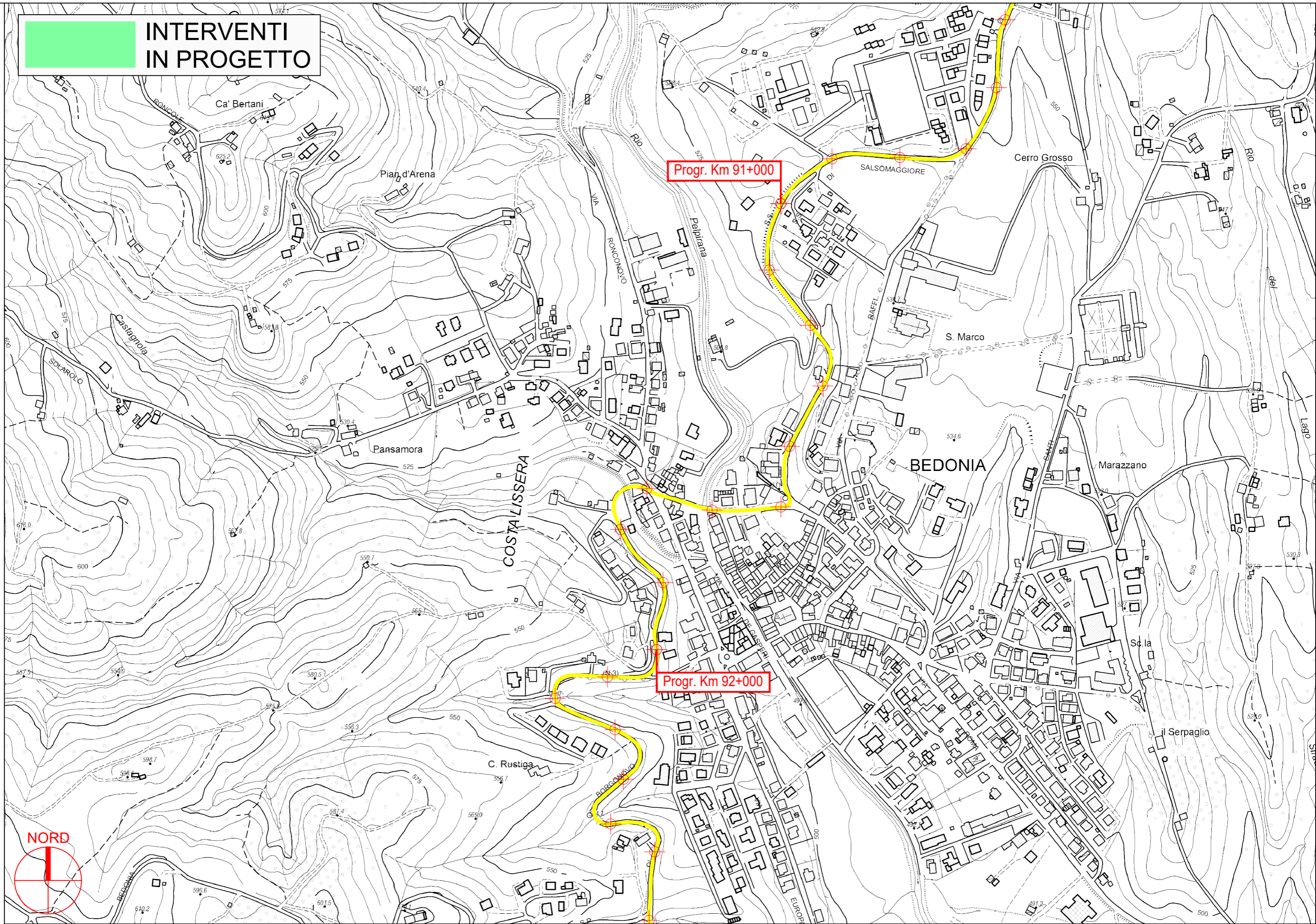
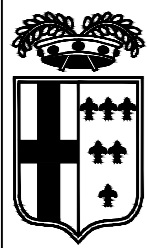




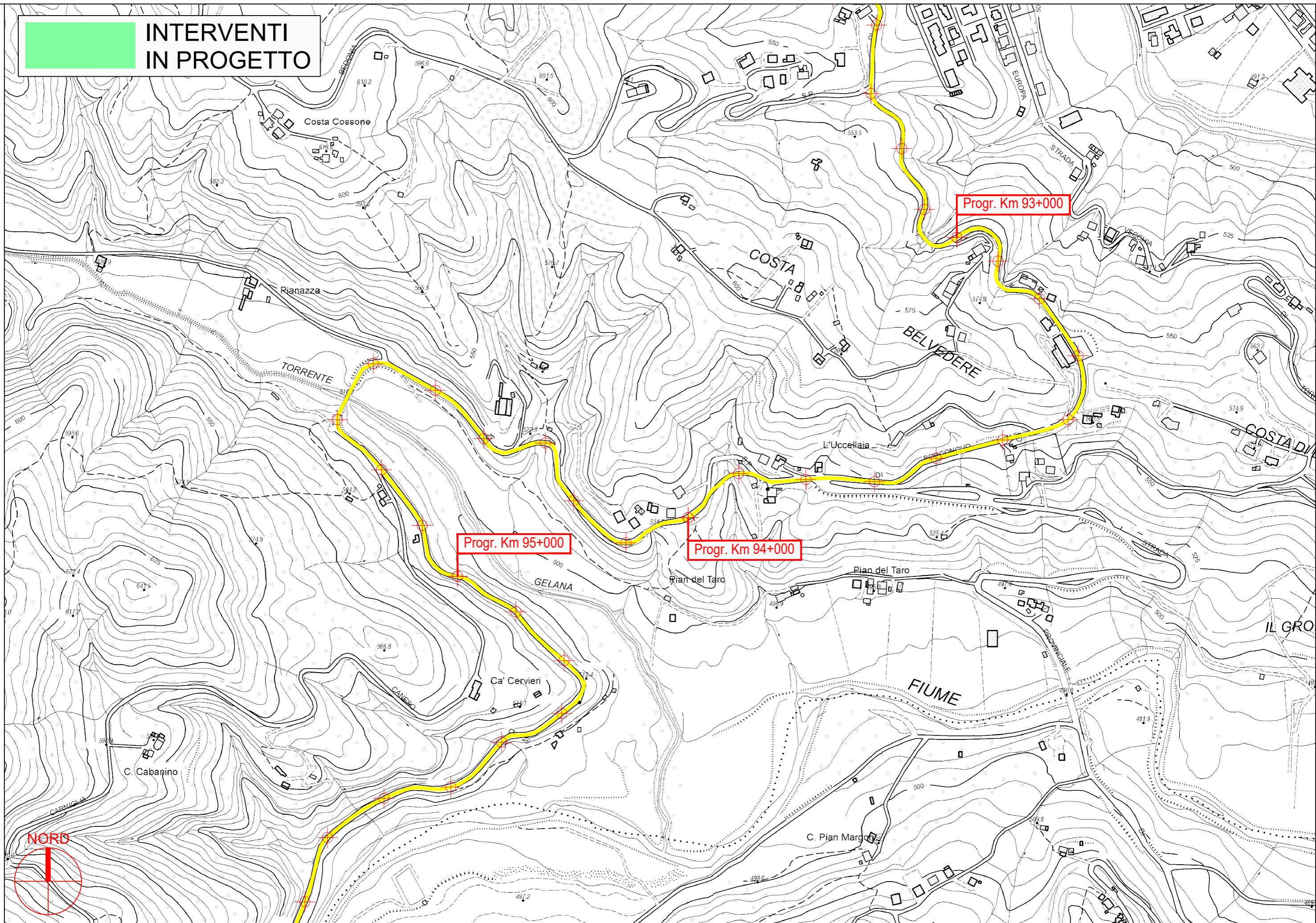
**INTERVENTI
IN PROGETTO**



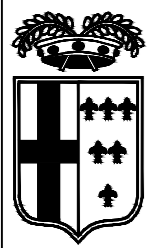
PROVINCIA DI PARMA



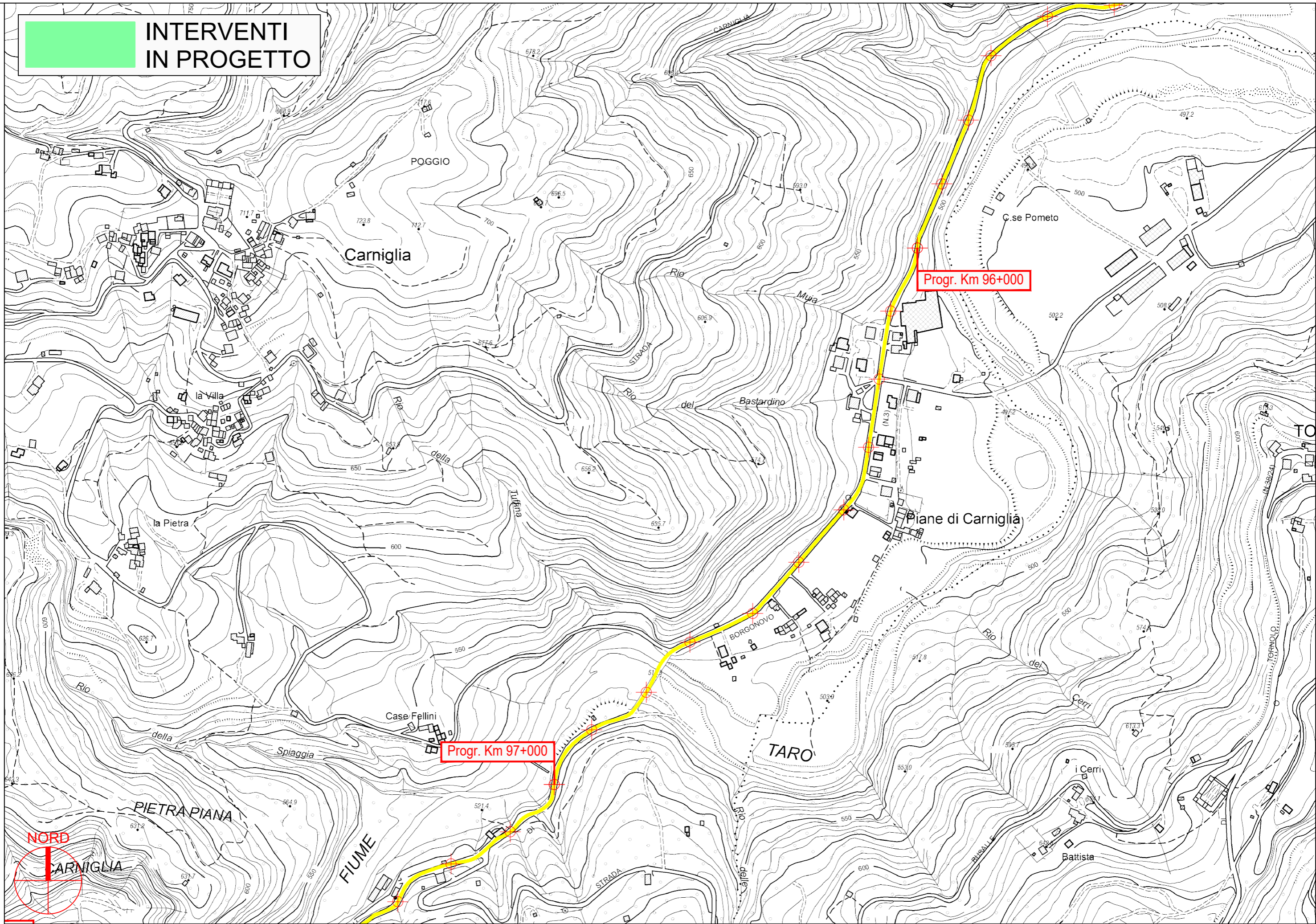
**INTERVENTI
IN PROGETTO**



PROVINCIA DI PARMA



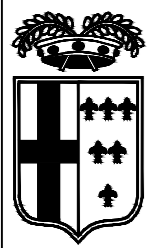
**INTERVENTI
IN PROGETTO**



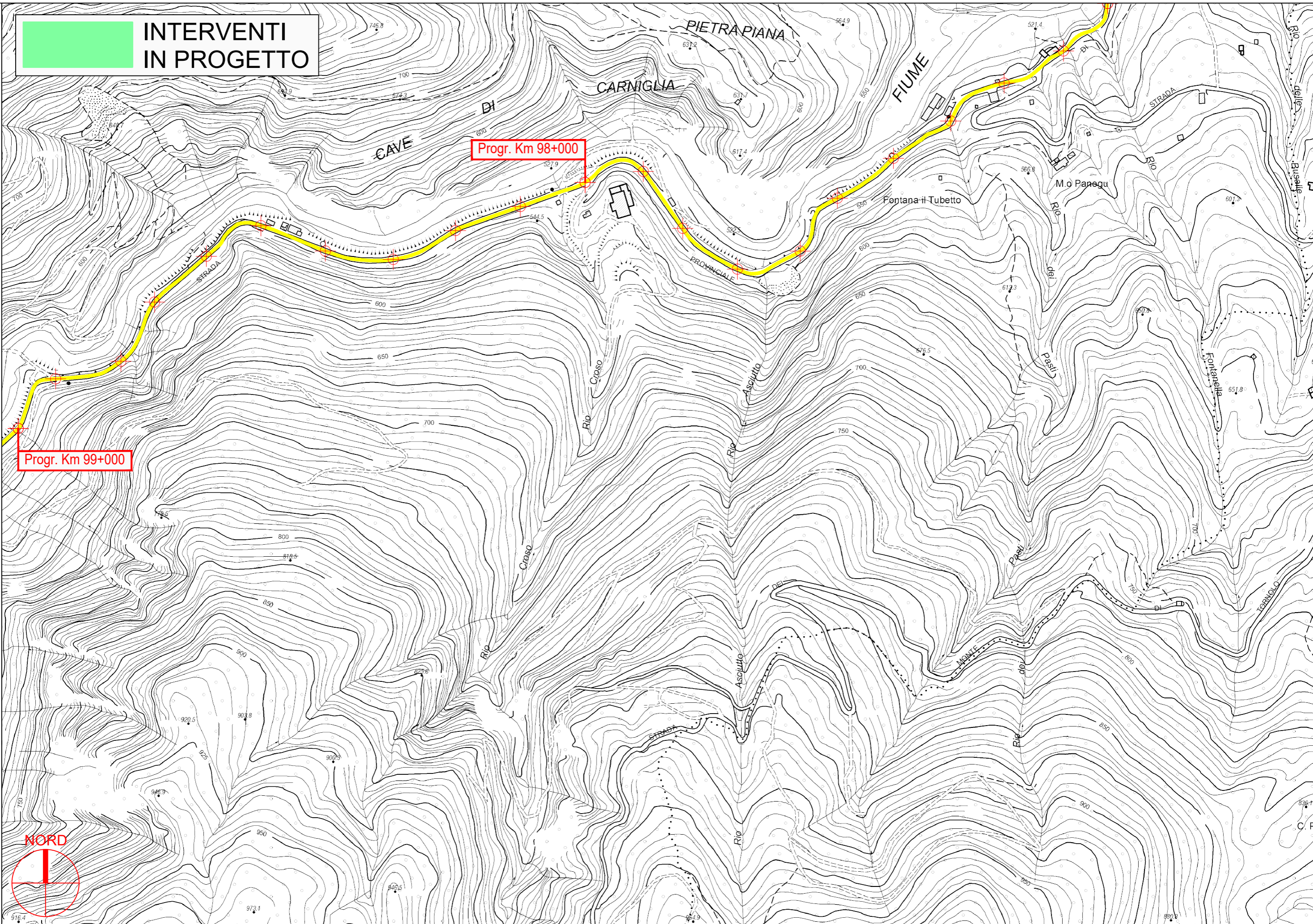
PROVINCIA DI PARMA

S.P. 359R di Salsomaggiore e Bardi - Sviluppo chilometrico 101+468 km

Tavola 41 di 51 - Scala 1 : 5.000



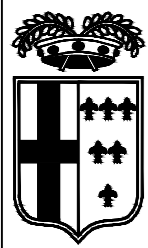
**INTERVENTI
IN PROGETTO**



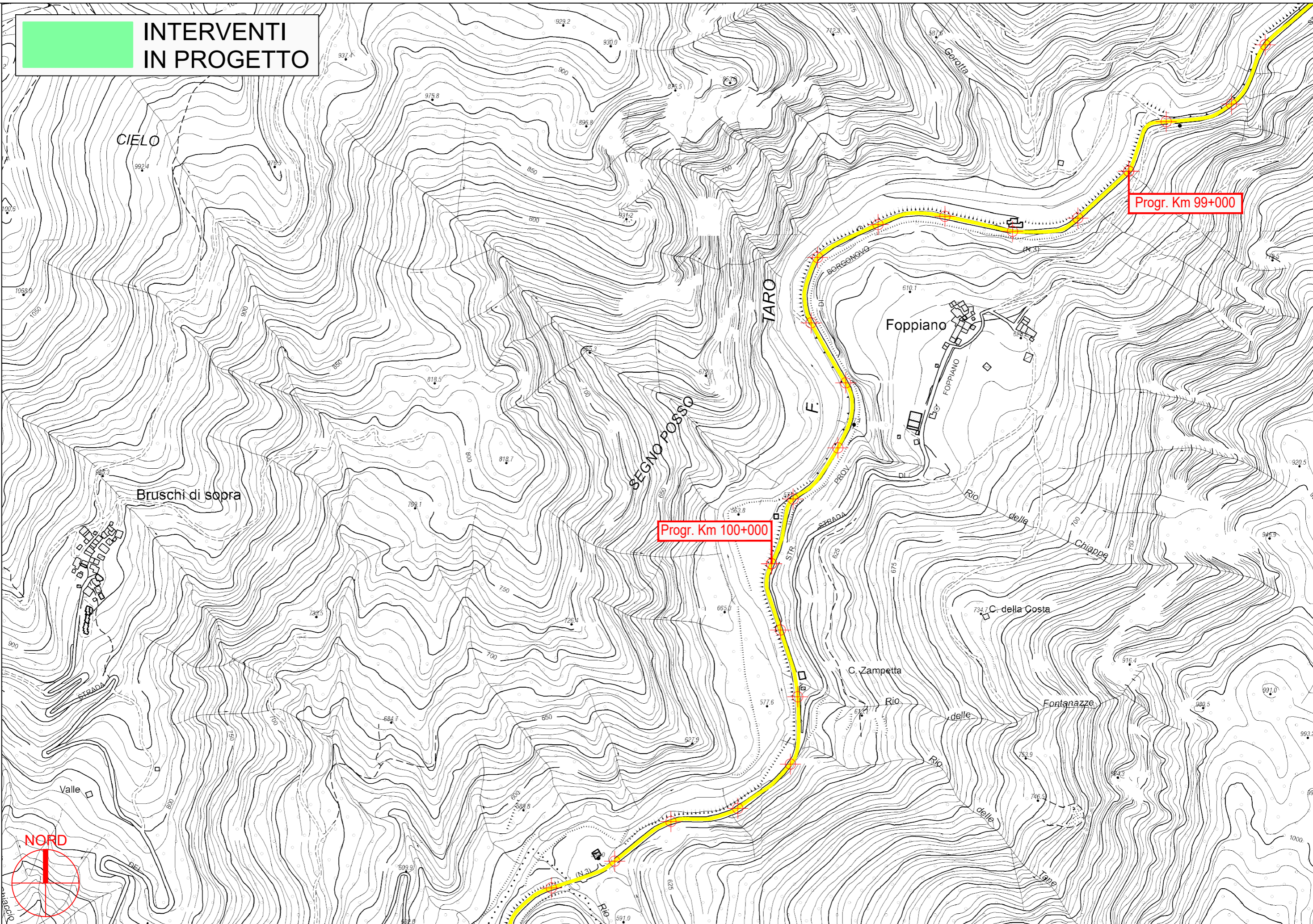
PROVINCIA DI PARMA

S.P. 359R di Salsomaggiore e Bardi - Sviluppo chilometrico 101+468 km

Tavola 42 di 51 - Scala 1 : 5.000



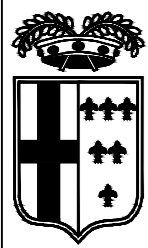
**INTERVENTI
IN PROGETTO**



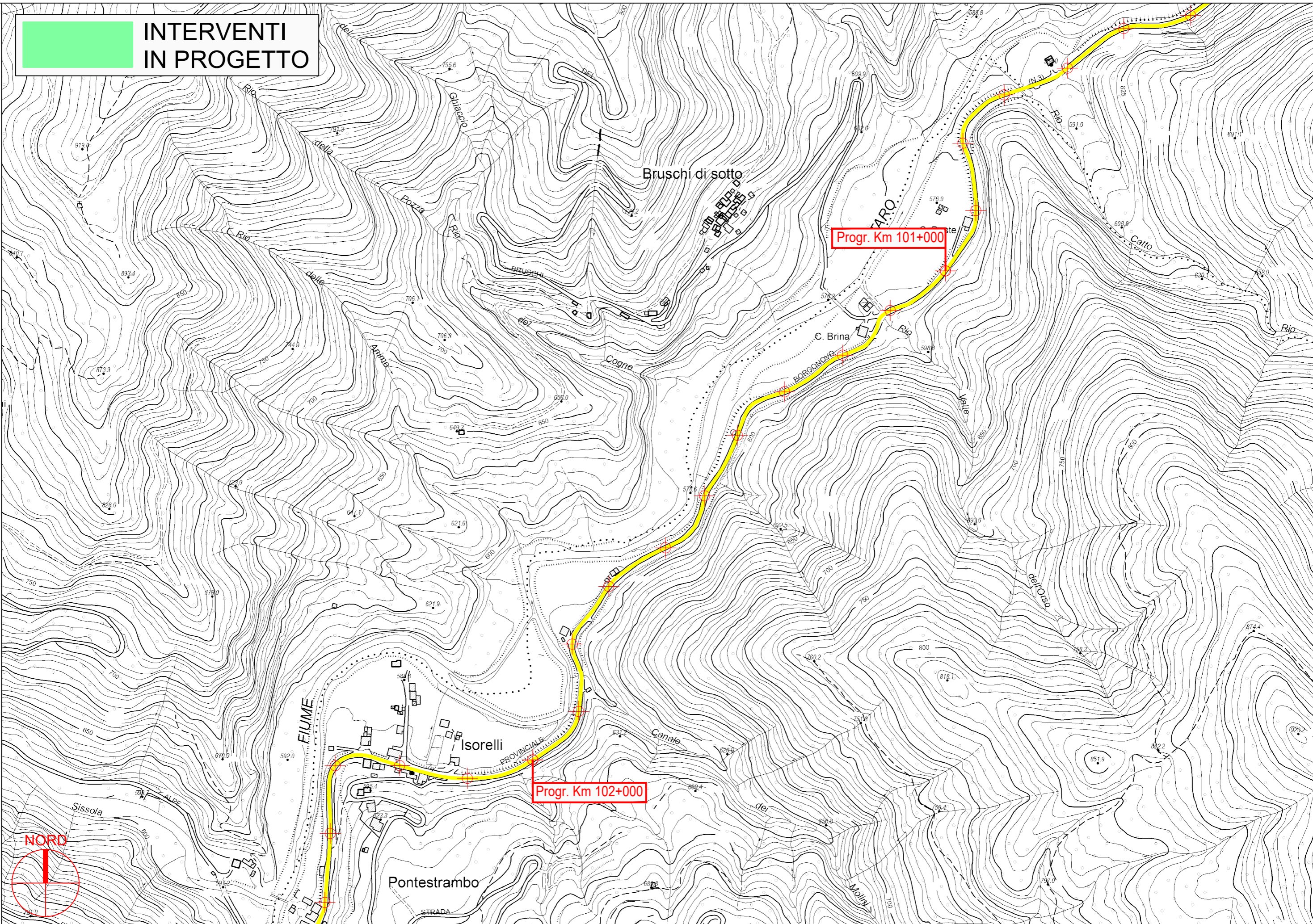
PROVINCIA DI PARMA

S.P. 359R di Salsomaggiore e Bardi - Sviluppo chilometrico 101+468 km

Tavola 43 di 51 - Scala 1 : 5.000



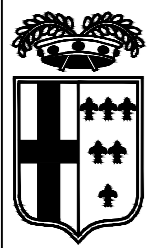
**INTERVENTI
IN PROGETTO**



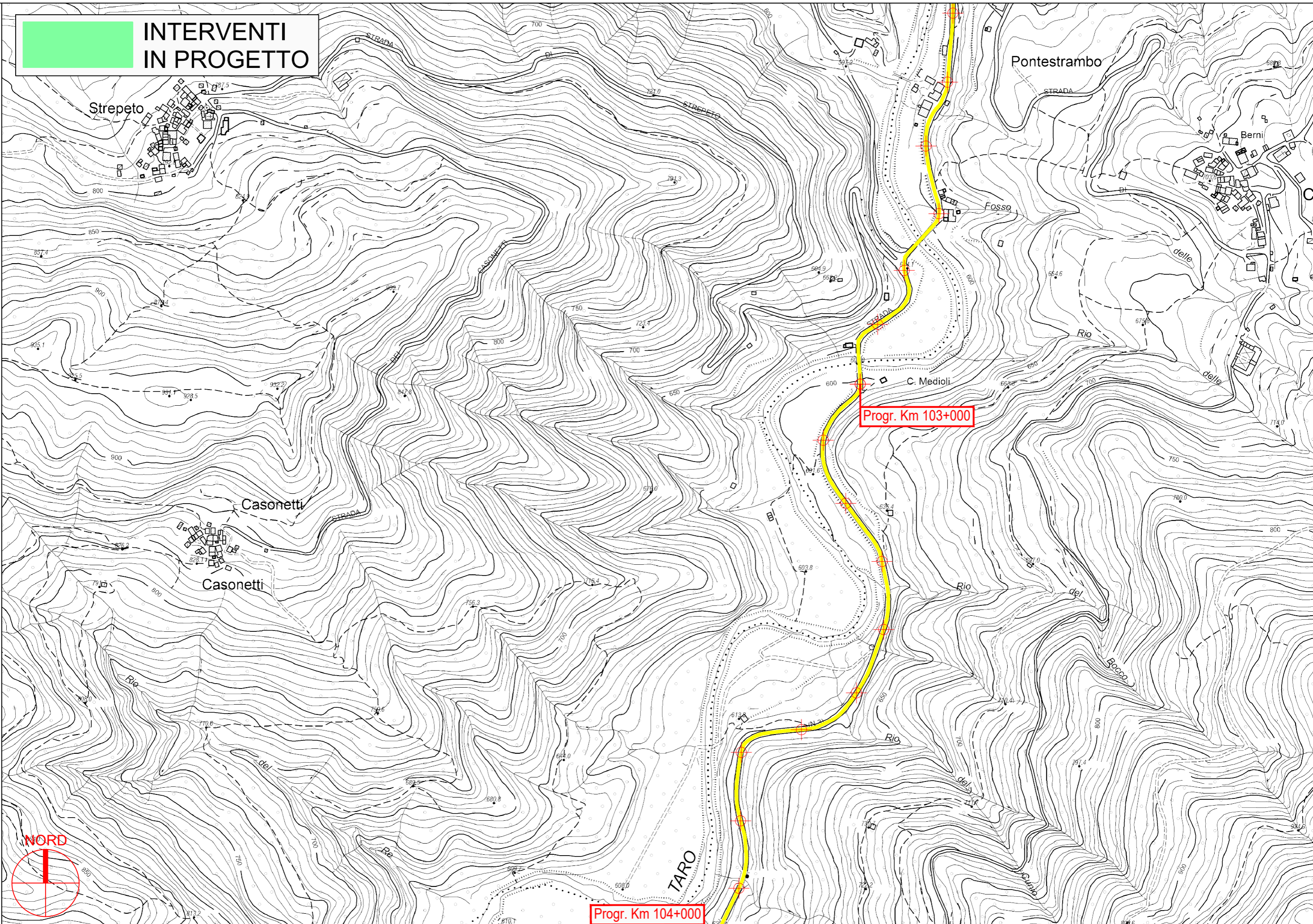
PROVINCIA DI PARMA

S.P. 359R di Salsomaggiore e Bardi - Sviluppo chilometrico 101+468 km

Tavola 44 di 51 - Scala 1 : 5.000



**INTERVENTI
IN PROGETTO**

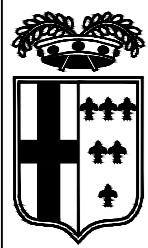


PROVINCIA DI PARMA

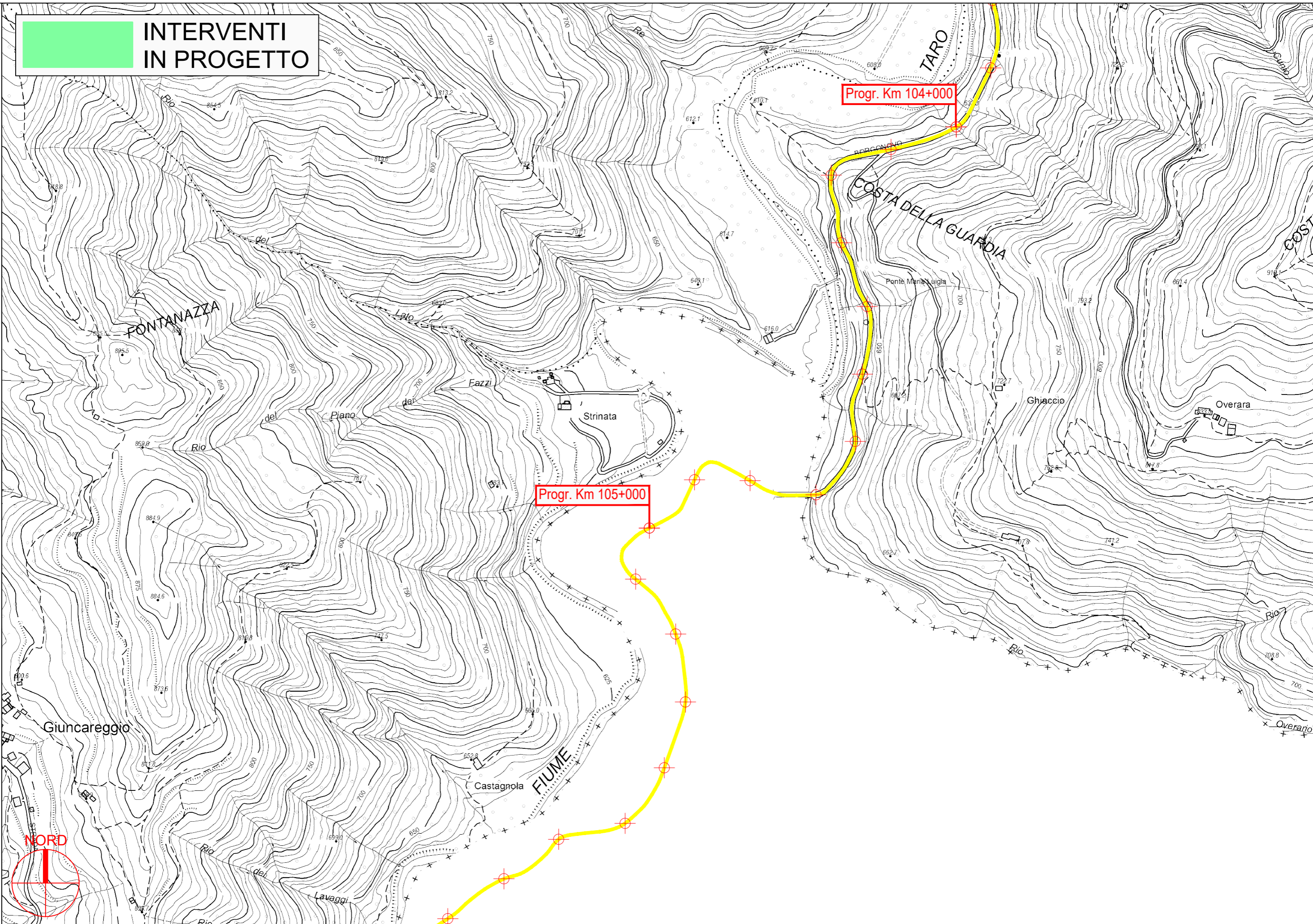


S.P. 359R di Salsomaggiore e Bardi - Sviluppo chilometrico 101+468 km

Tavola 45 di 51 - Scala 1 : 5.000



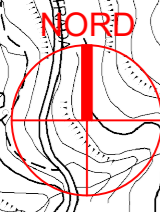
**INTERVENTI
IN PROGETTO**

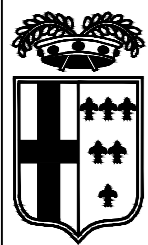


PROVINCIA DI PARMA

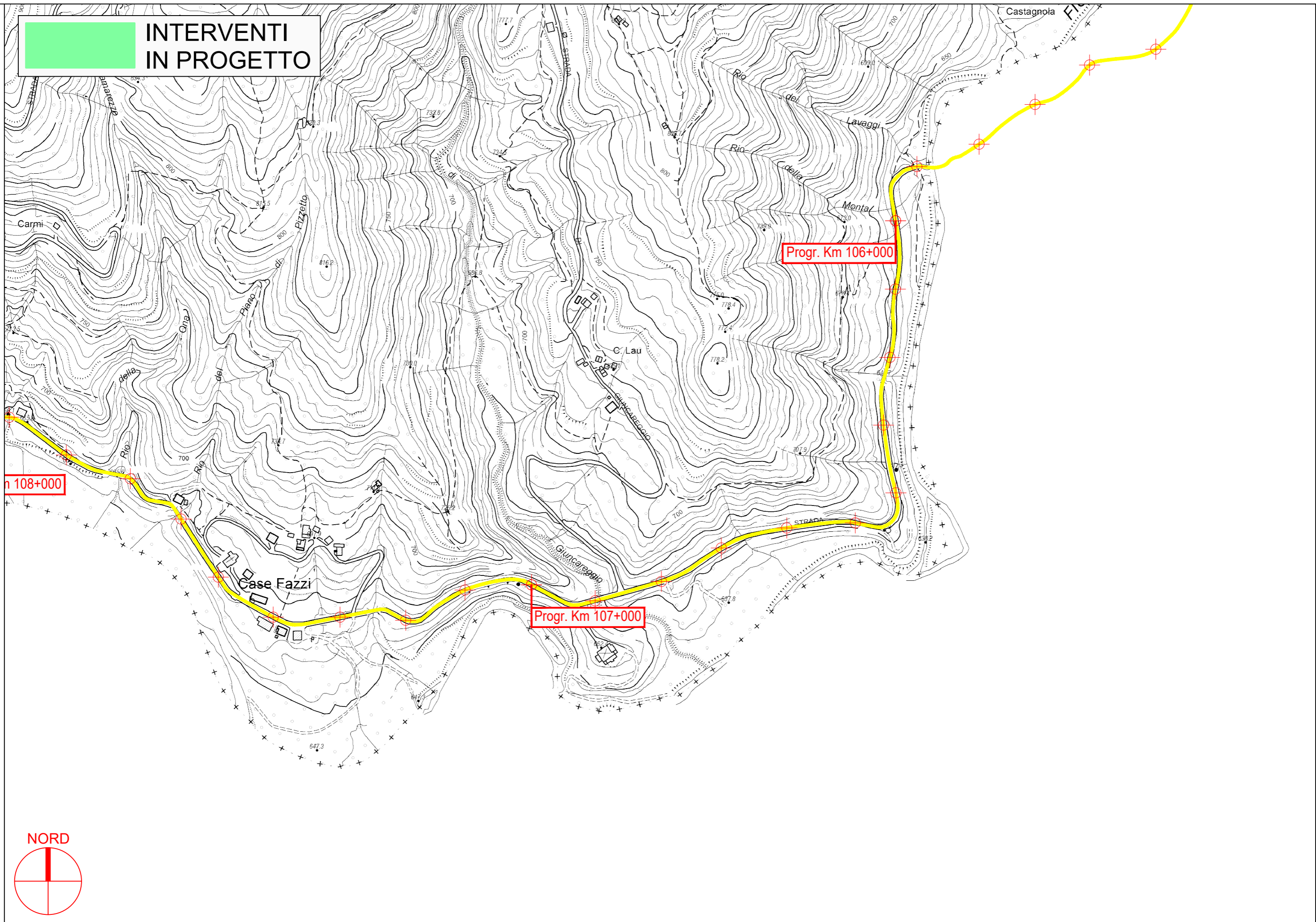
S.P. 359R di Salsomaggiore e Bardi - Sviluppo chilometrico 101+468 km

Tavola 46 di 51 - Scala 1 : 5.000



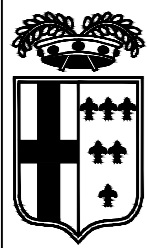


**INTERVENTI
IN PROGETTO**

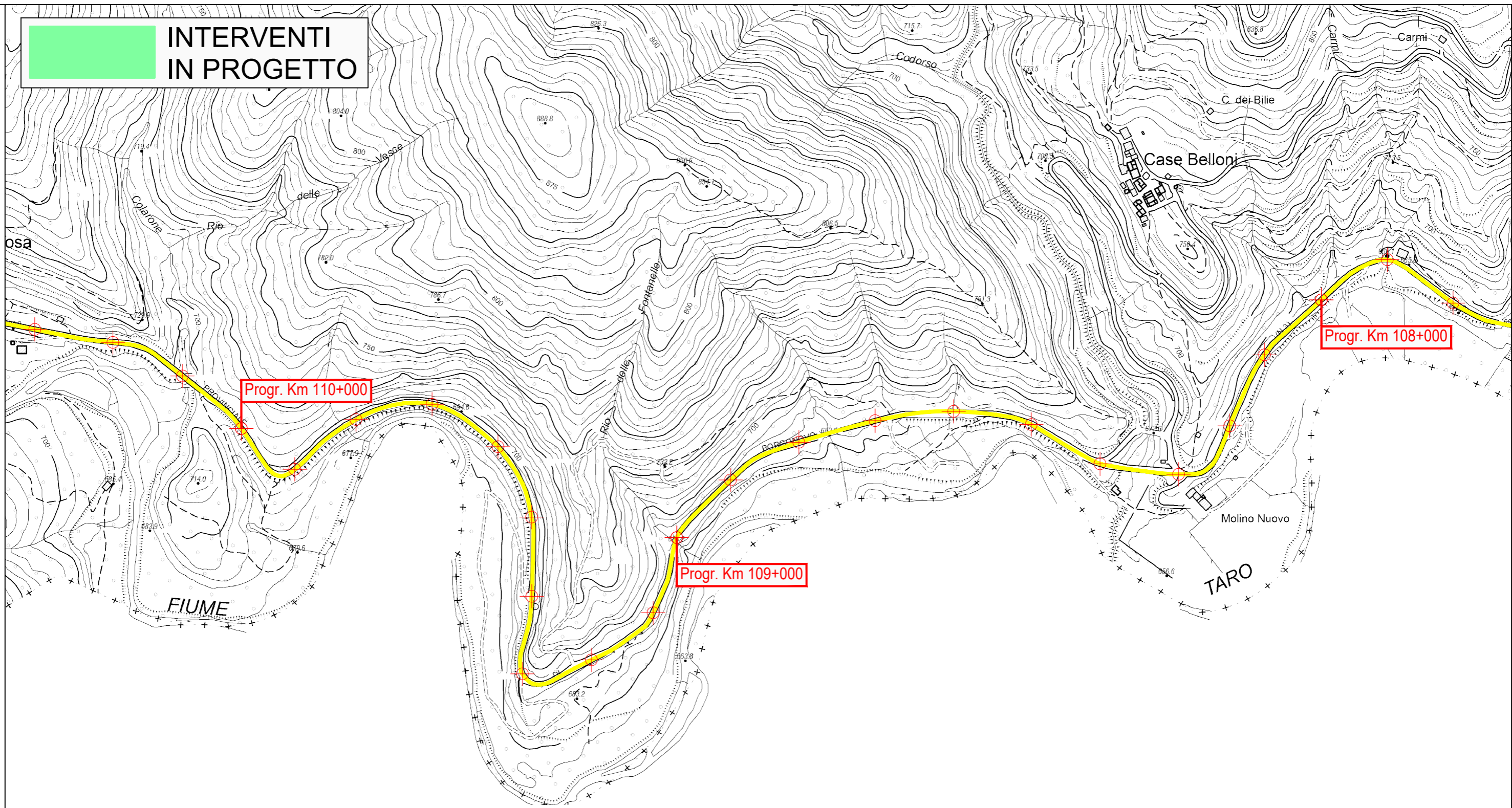


PROVINCIA DI PARMA



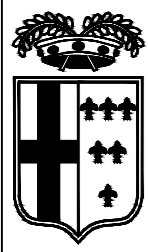


**INTERVENTI
IN PROGETTO**

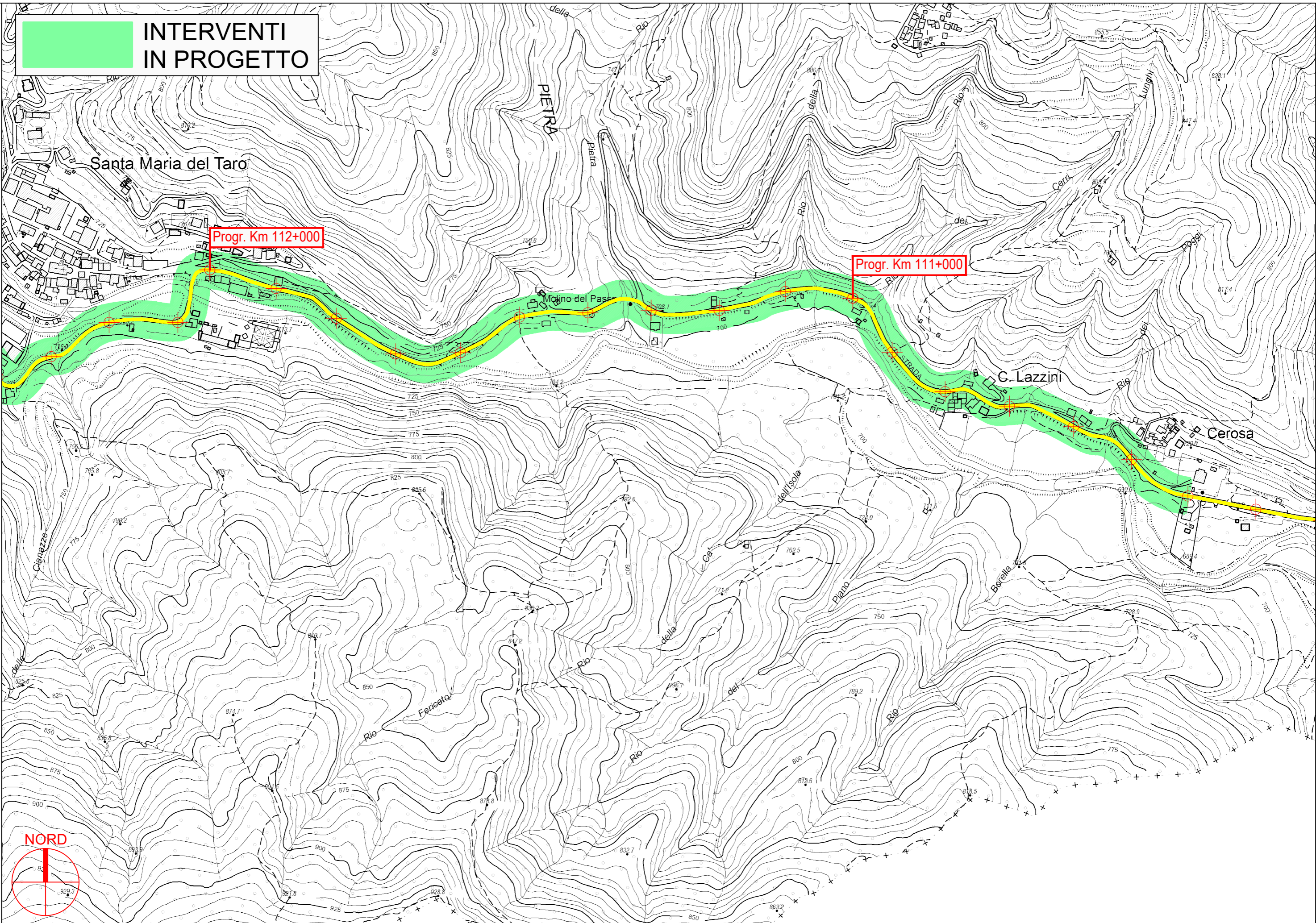


PROVINCIA DI PARMA





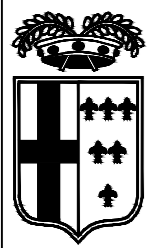
**INTERVENTI
IN PROGETTO**



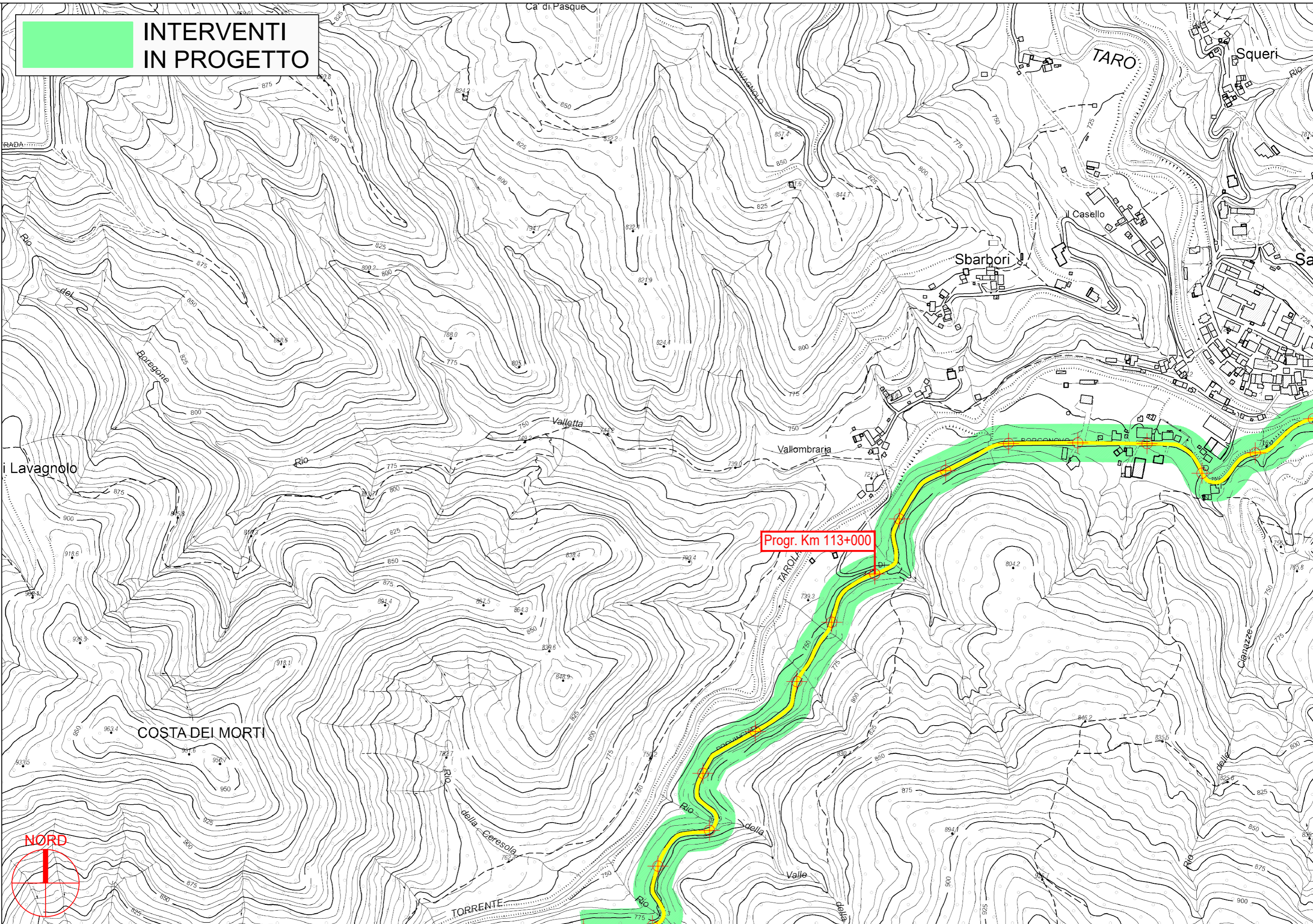
PROVINCIA DI PARMA

S.P. 359R di Salsomaggiore e Bardi - Sviluppo chilometrico 101+468 km

Tavola 49 di 51 - Scala 1 : 5.000



**INTERVENTI
IN PROGETTO**



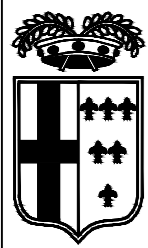
Progr. Km 113+000

PROVINCIA DI PARMA

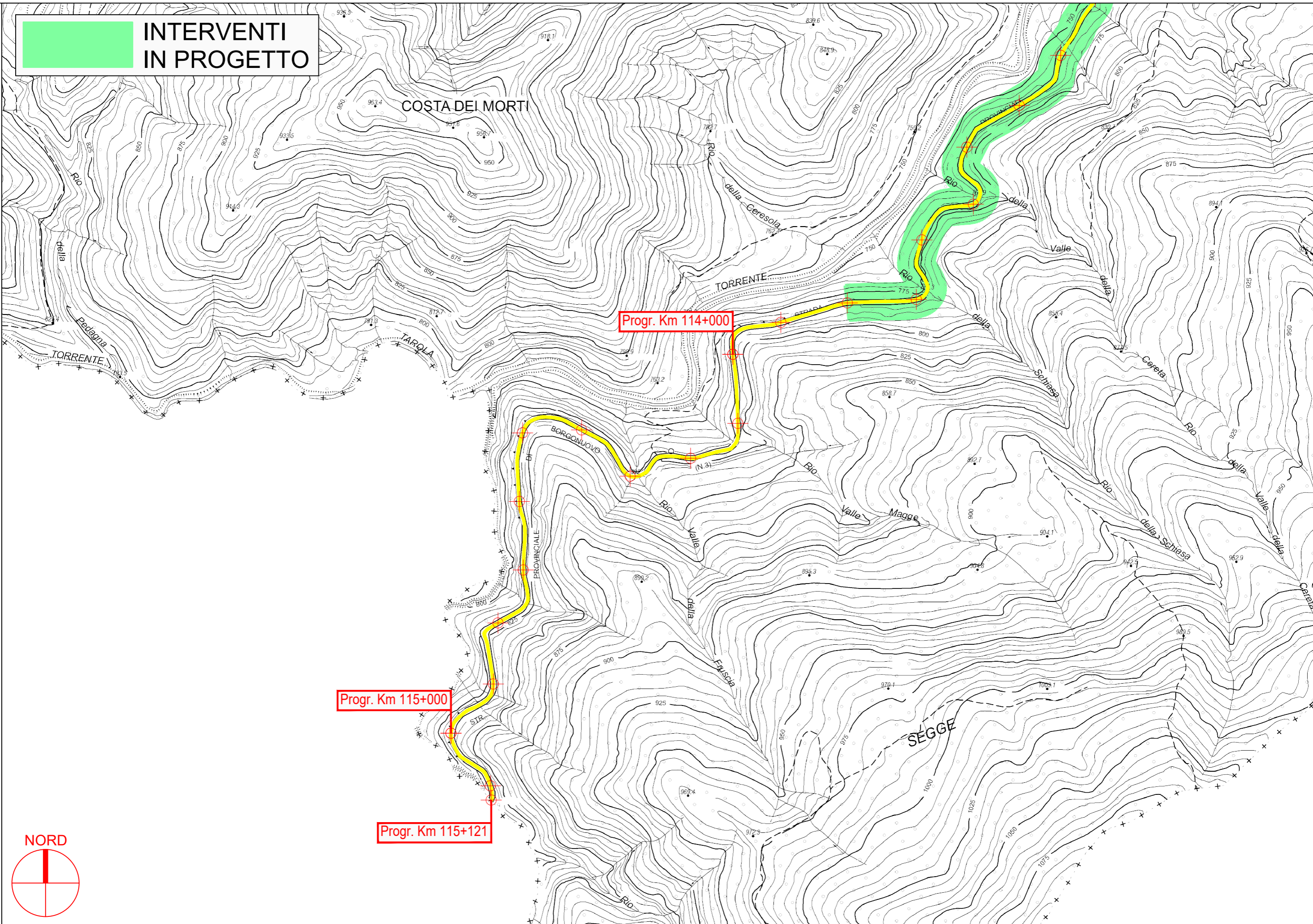


S.P. 359R di Salsomaggiore e Bardi - Sviluppo chilometrico 101+468 km

Tavola 50 di 51 - Scala 1 : 5.000



**INTERVENTI
IN PROGETTO**



Progr. Km 114+000

Progr. Km 115+000

Progr. Km 115+121



PROVINCIA DI PARMA