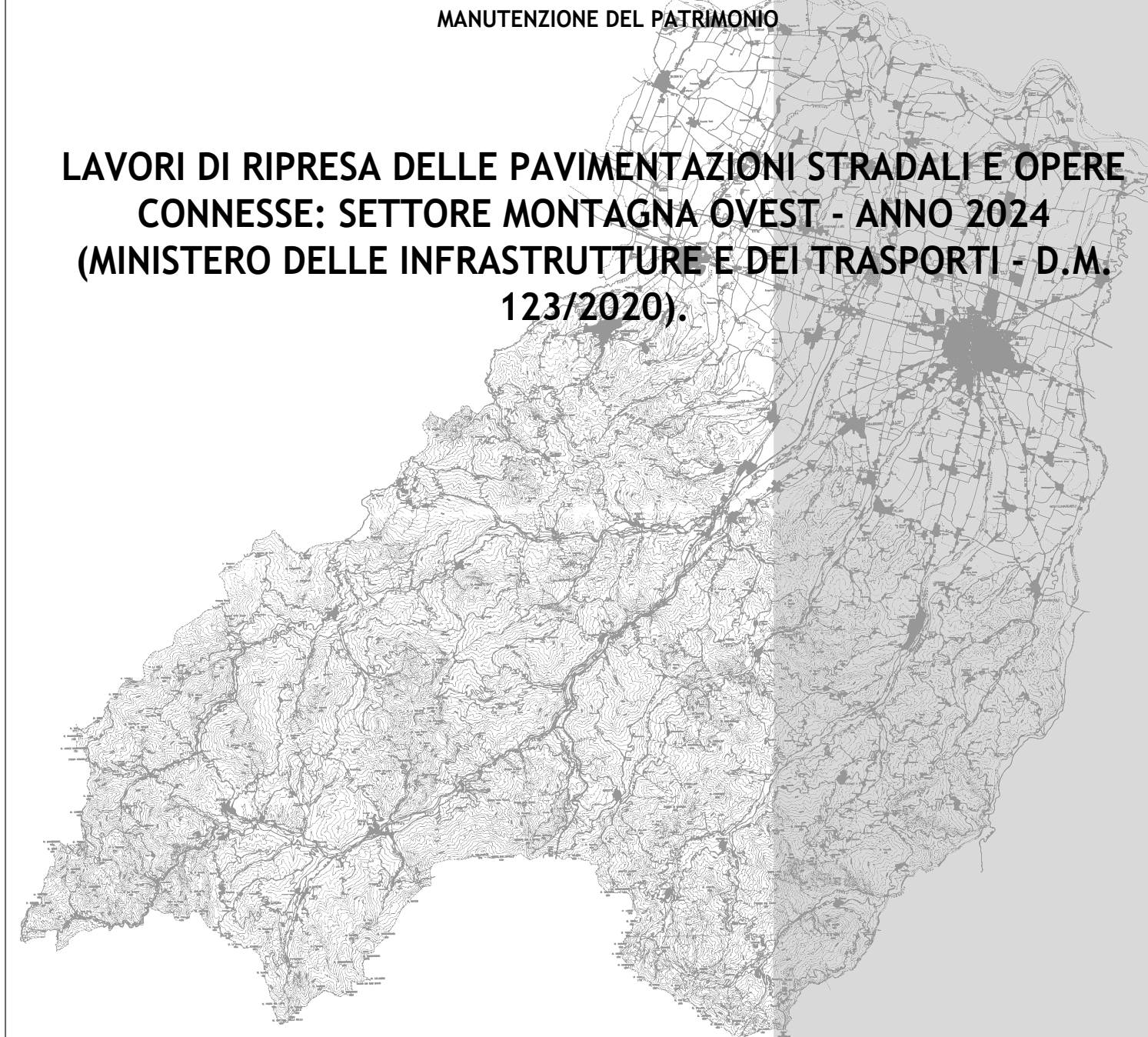




PROVINCIA DI PARMA
SERVIZIO VIABILITA' E INFRASTRUTTURE
TRASPORTI ECCEZIONALI - ESPROPRI - EDILIZIA SCOLASTICA
MANUTENZIONE DEL PATRIMONIO

**LAVORI DI RIPRESA DELLE PAVIMENTAZIONI STRADALI E OPERE
CONNESSE: SETTORE MONTAGNA OVEST - ANNO 2024
(MINISTERO DELLE INFRASTRUTTURE E DEI TRASPORTI - D.M.
123/2020).**



PROGETTO DEFINITIVO-ESECUTIVO

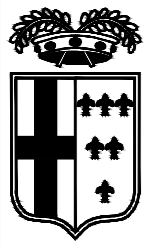
DESCRIZIONE	ELABORATO
PLANIMETRIE: TRATTI DI INTERVENTO	7.9
S.P. 42 DEL MOZZOLA	
SCALA	DATA
1:5.000	FEBBRAIO 2024

Il Responsabile del Servizio
Ing. Gianpaolo Monteverdi

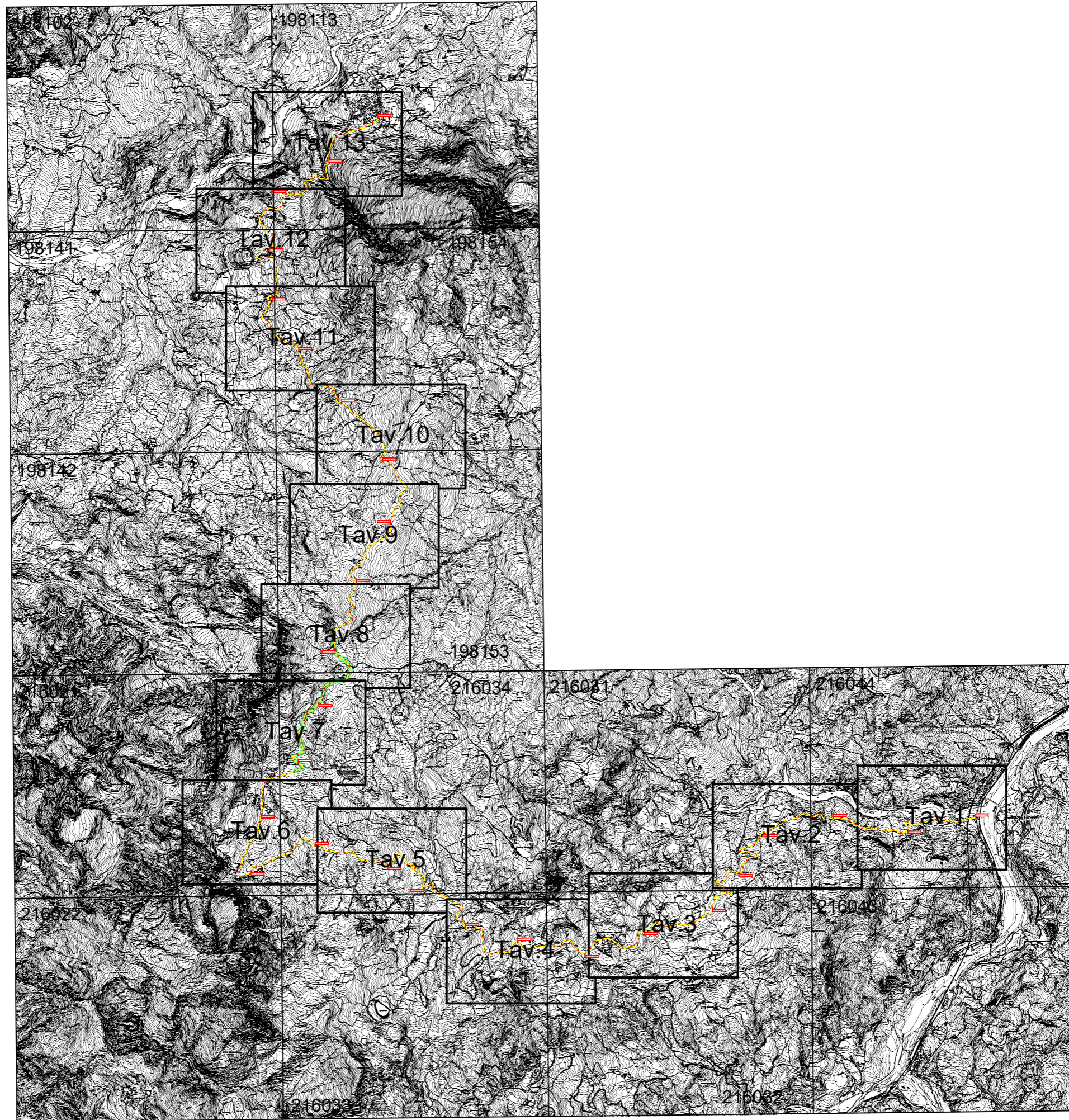
Il Responsabile del Procedimento
Arch. Gloria Resteghini

Il Progettista
Geom. Antonio Mesti

Il Coordinatore
Geom. Antonio Mesti

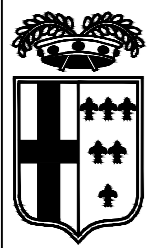


PROVINCIA DI PARMA

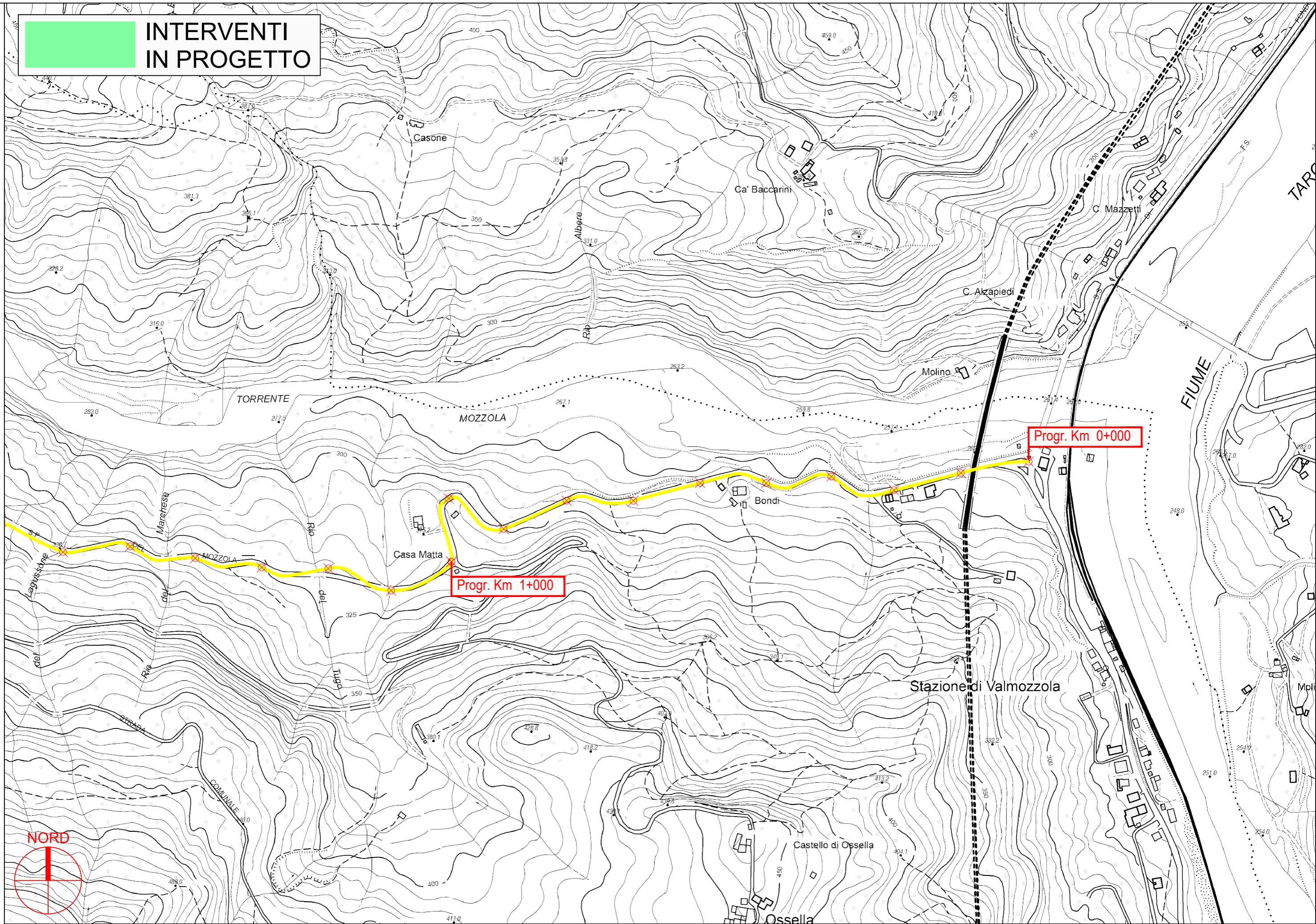


S.P. 42 del Mozzola - Sviluppo chilometrico 26+900 km

Inquadramento - Scala Adattata



**INTERVENTI
IN PROGETTO**

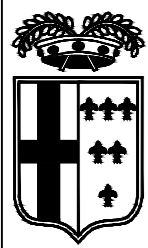


PROVINCIA DI PARMA

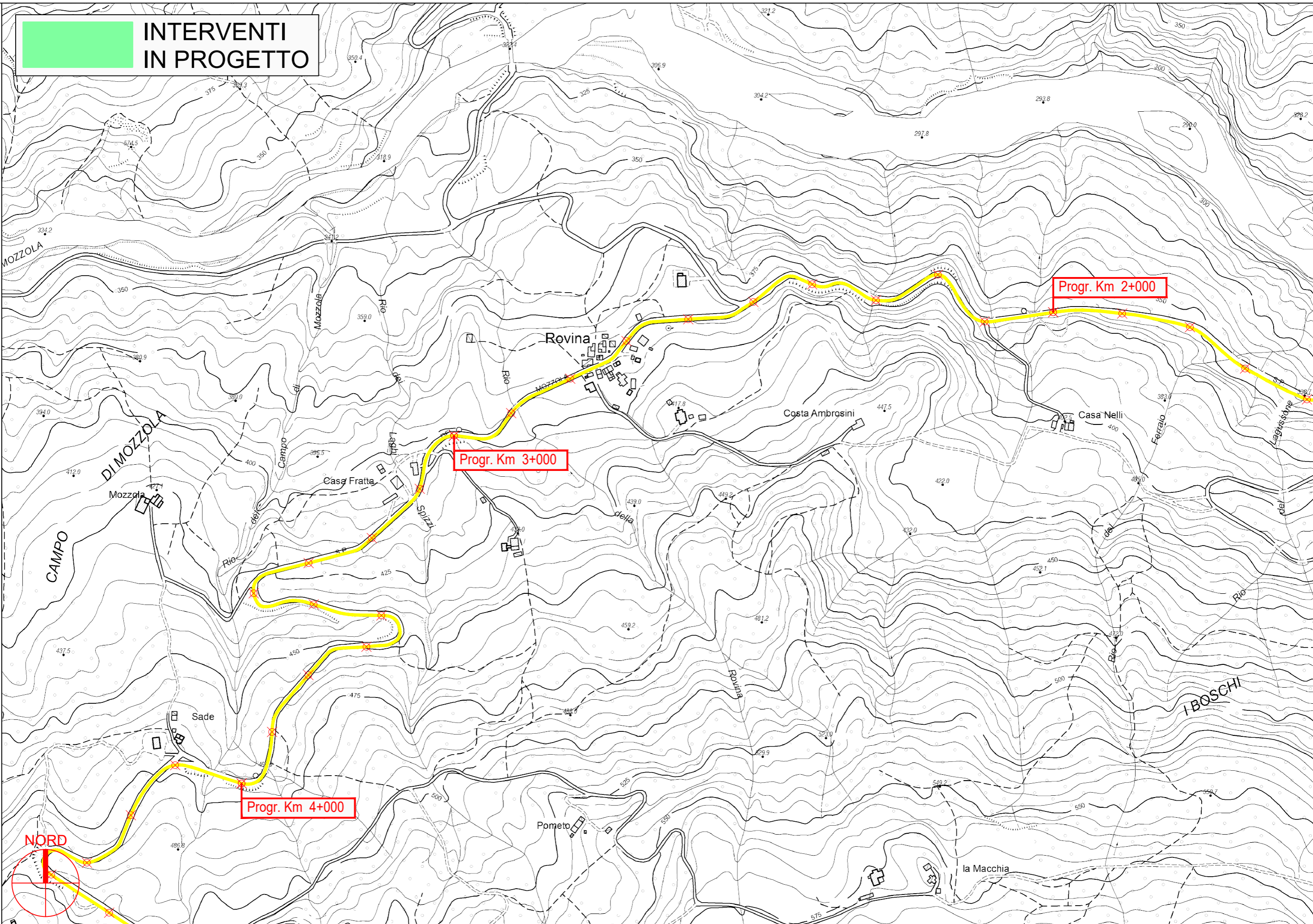


S.P. 42 del Mozzola - Sviluppo chilometrico 26+900 km

Tavola 1 di 13 - Scala 1 : 5.000



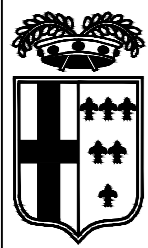
**INTERVENTI
IN PROGETTO**



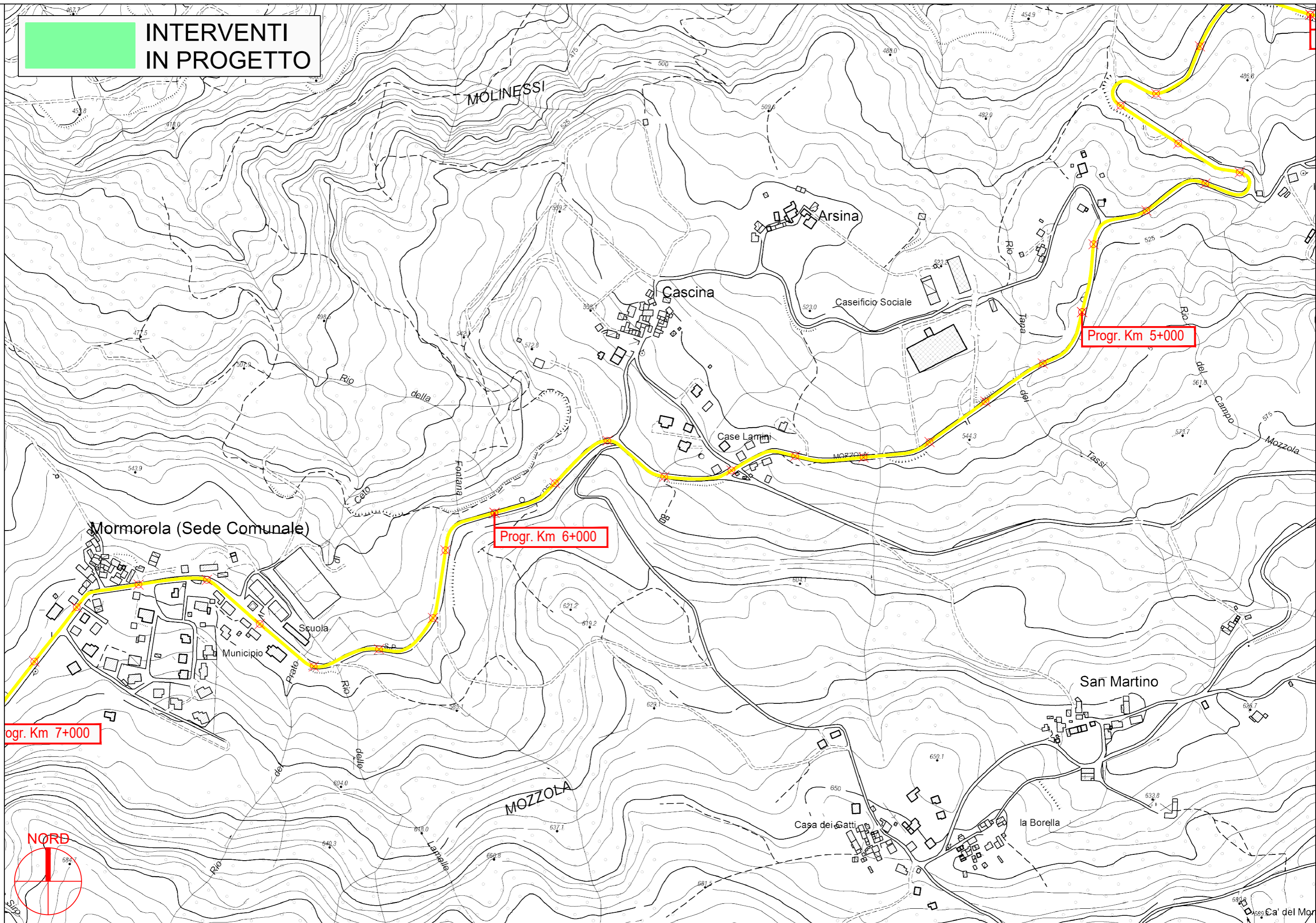
PROVINCIA DI PARMA

S.P. 42 del Mozzola - Sviluppo chilometrico 26+900 km

Tavola 2 di 13 - Scala 1 : 5.000



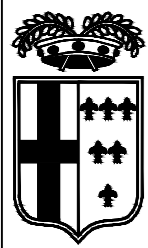
**INTERVENTI
IN PROGETTO**



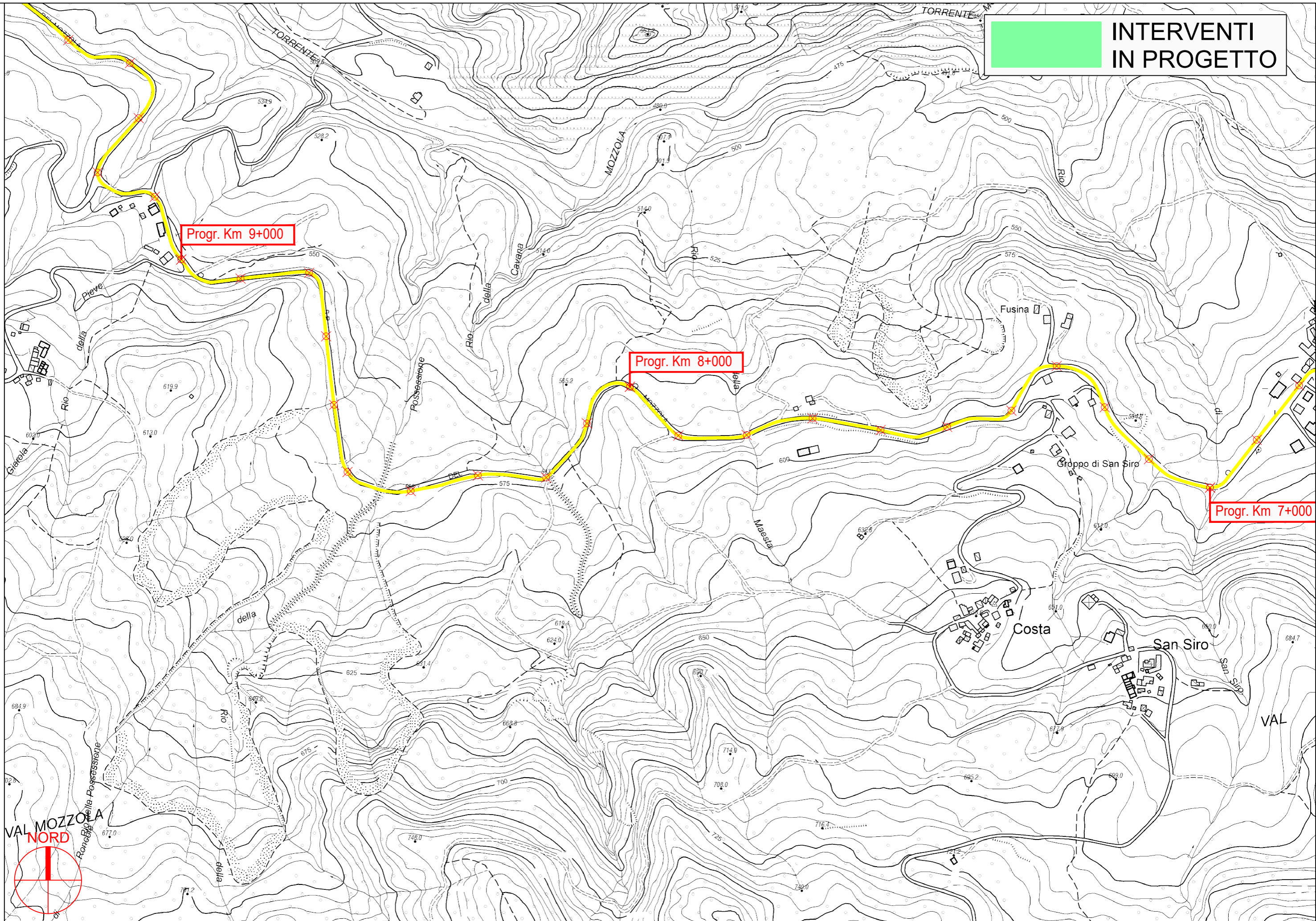
PROVINCIA DI PARMA

S.P. 42 del Mozzola - Sviluppo chilometrico 26+900 km

Tavola 3 di 13 - Scala 1 : 5.000



**INTERVENTI
IN PROGETTO**

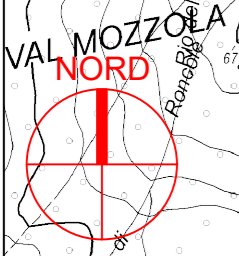


Progr. Km 9+000

Progr. Km 8+000

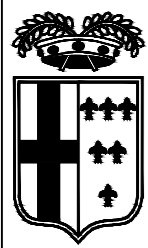
Progr. Km 7+000

PROVINCIA DI PARMA

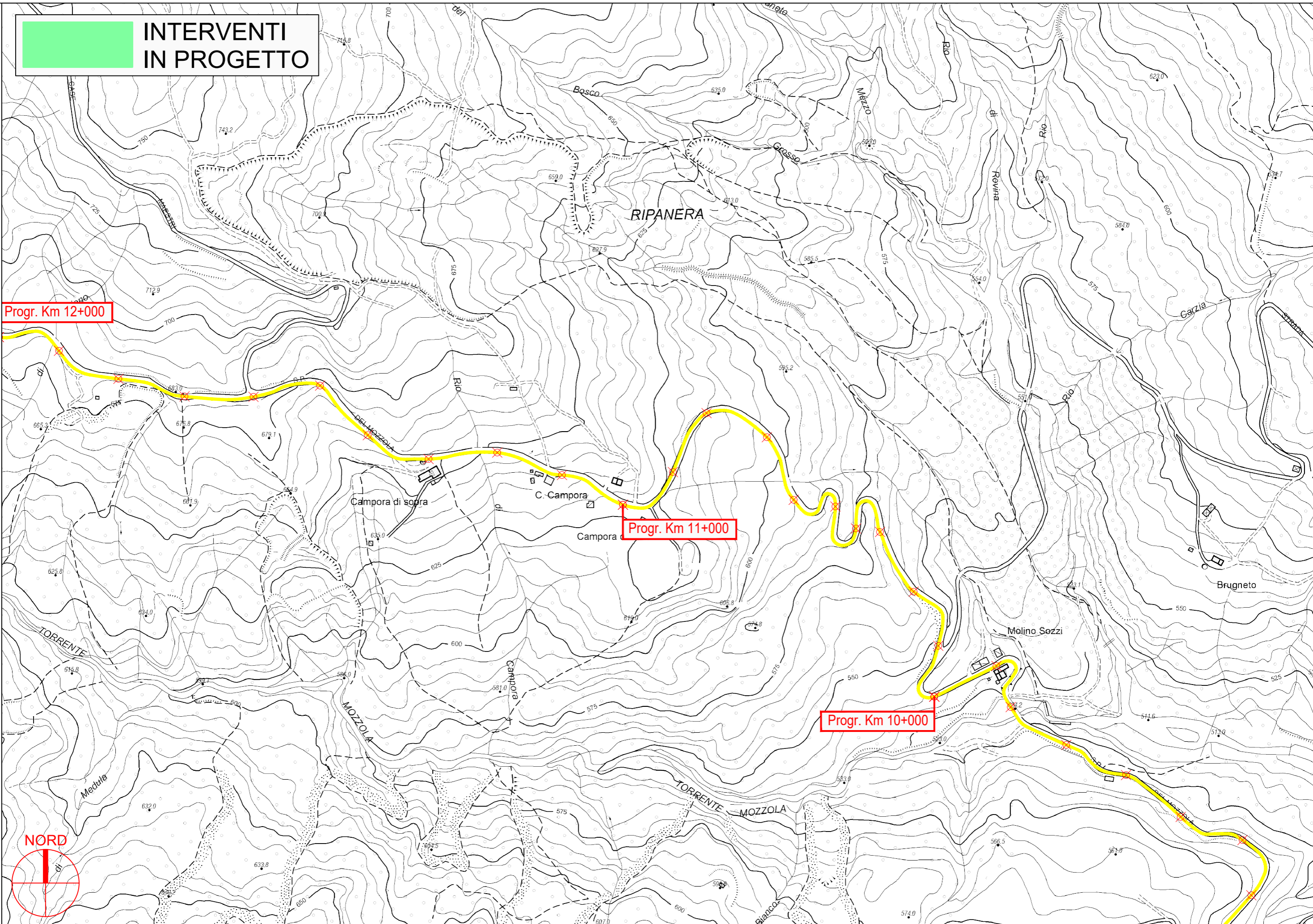


S.P. 42 del Mozzola - Sviluppo chilometrico 26+900 km

Tavola 4 di 13 - Scala 1 : 5.000



**INTERVENTI
IN PROGETTO**

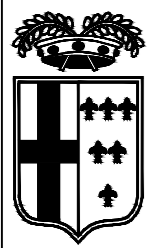


PROVINCIA DI PARMA

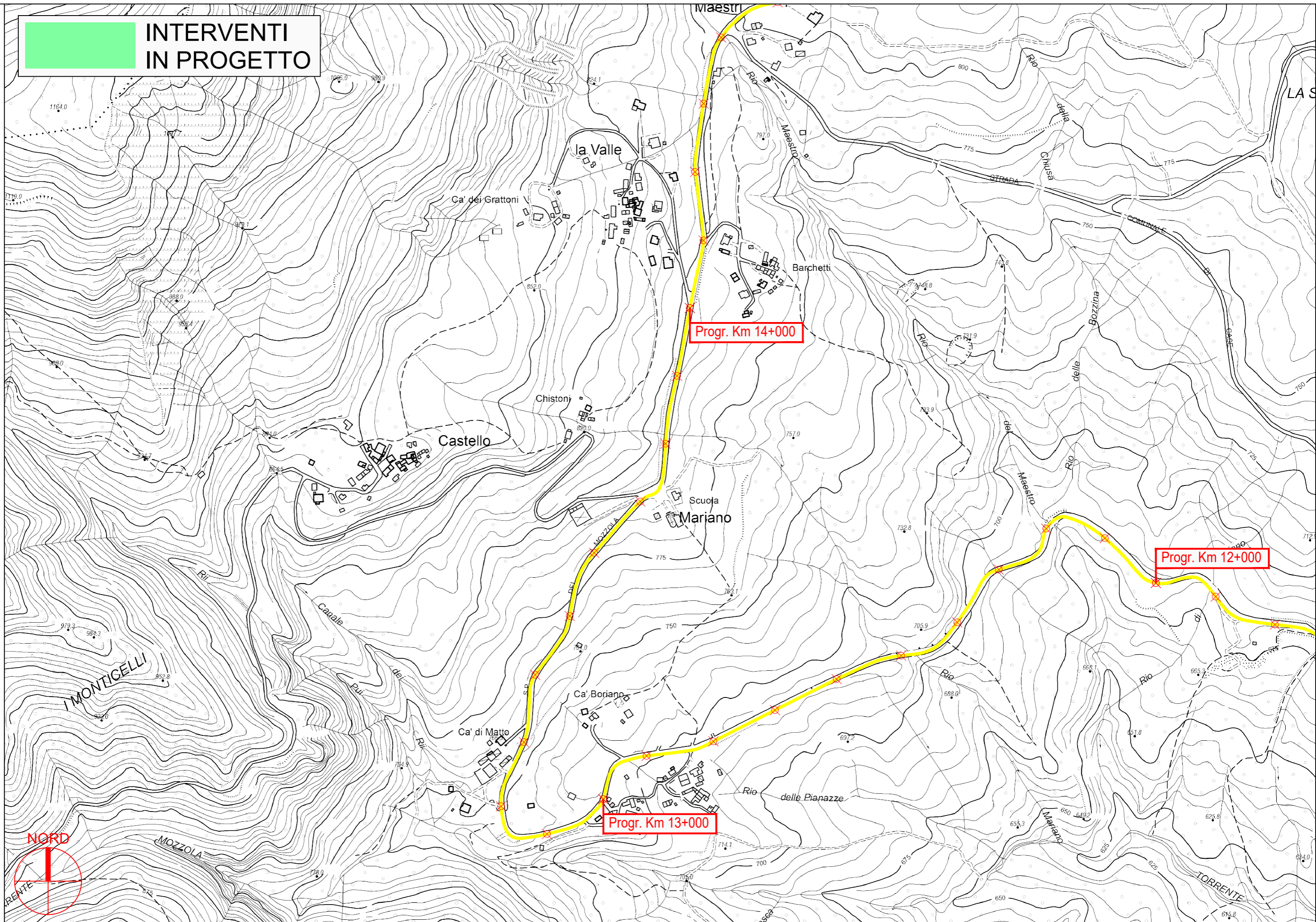


S.P. 42 del Mozzola - Sviluppo chilometrico 26+900 km

Tavola 5 di 13 - Scala 1 : 5.000



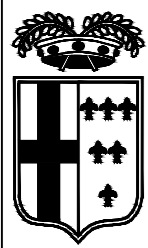
**INTERVENTI
IN PROGETTO**



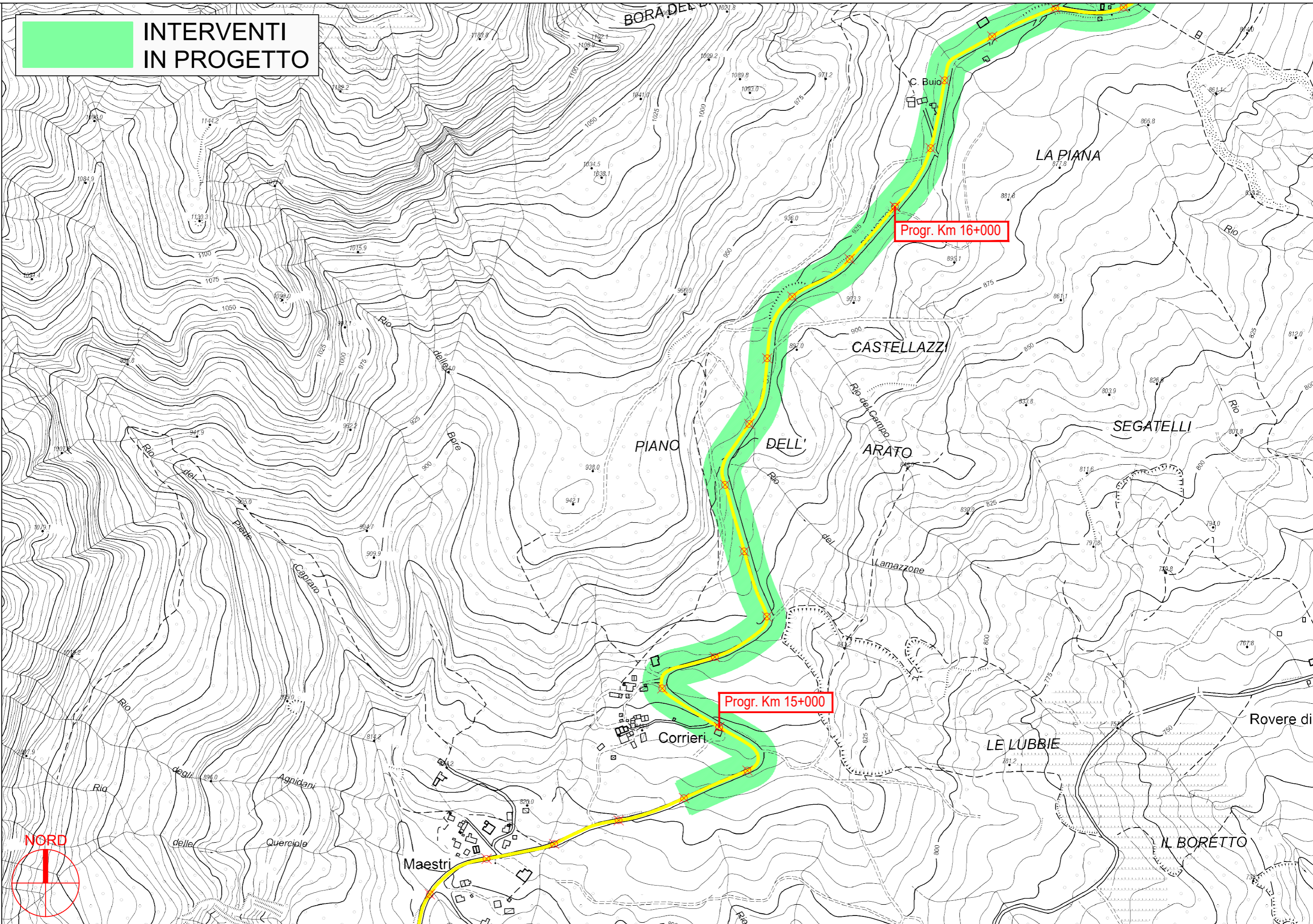
PROVINCIA DI PARMA

S.P. 42 del Mozzola - Sviluppo chilometrico 26+900 km

Tavola 6 di 13 - Scala 1 : 5.000



**INTERVENTI
IN PROGETTO**



Progr. Km 16+000

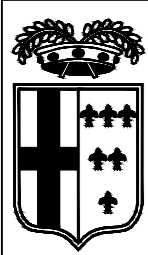
Progr. Km 15+000



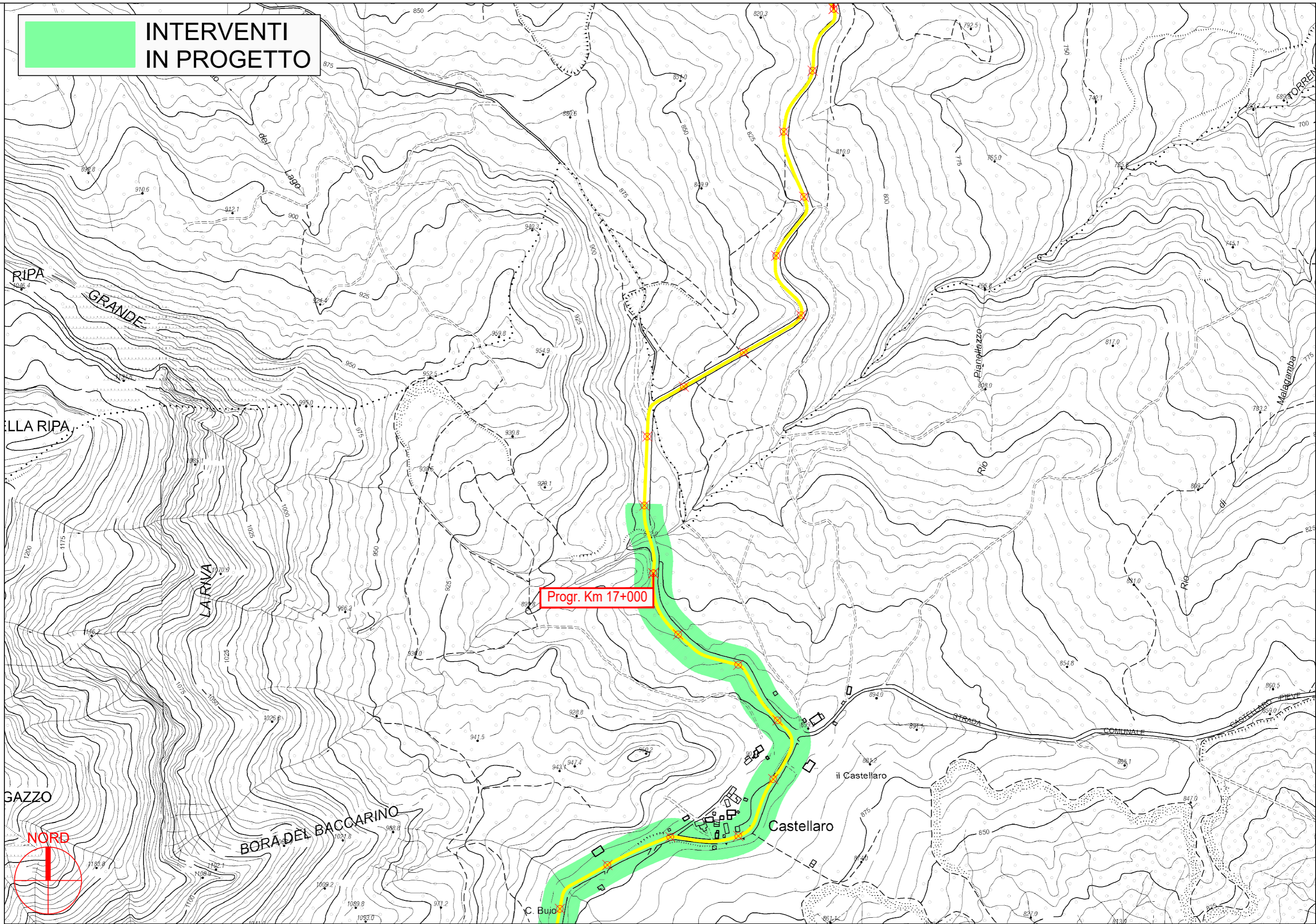
PROVINCIA DI PARMA

S.P. 42 del Mozzola - Sviluppo chilometrico 26+900 km

Tavola 7 di 13 - Scala 1 : 5.000



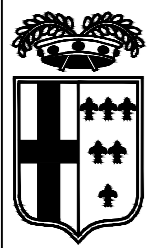
**INTERVENTI
IN PROGETTO**



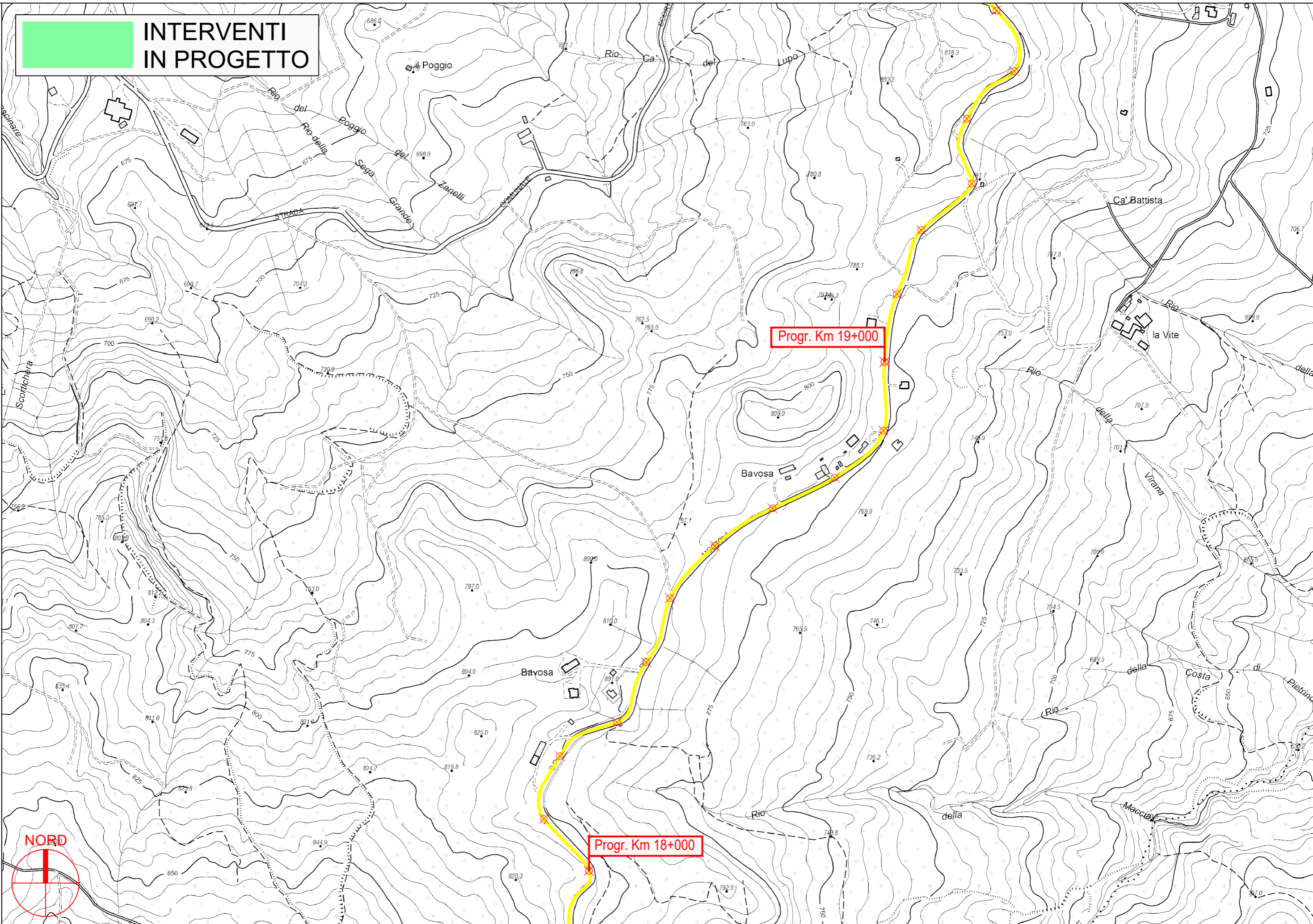
PROVINCIA DI PARMA

S.P. 42 del Mozzola - Sviluppo chilometrico 26+900 km

Tavola 8 di 13 - Scala 1 : 5.000



**INTERVENTI
IN PROGETTO**



Progr. Km 19+000

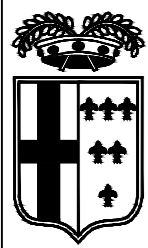
Progr. Km 18+000



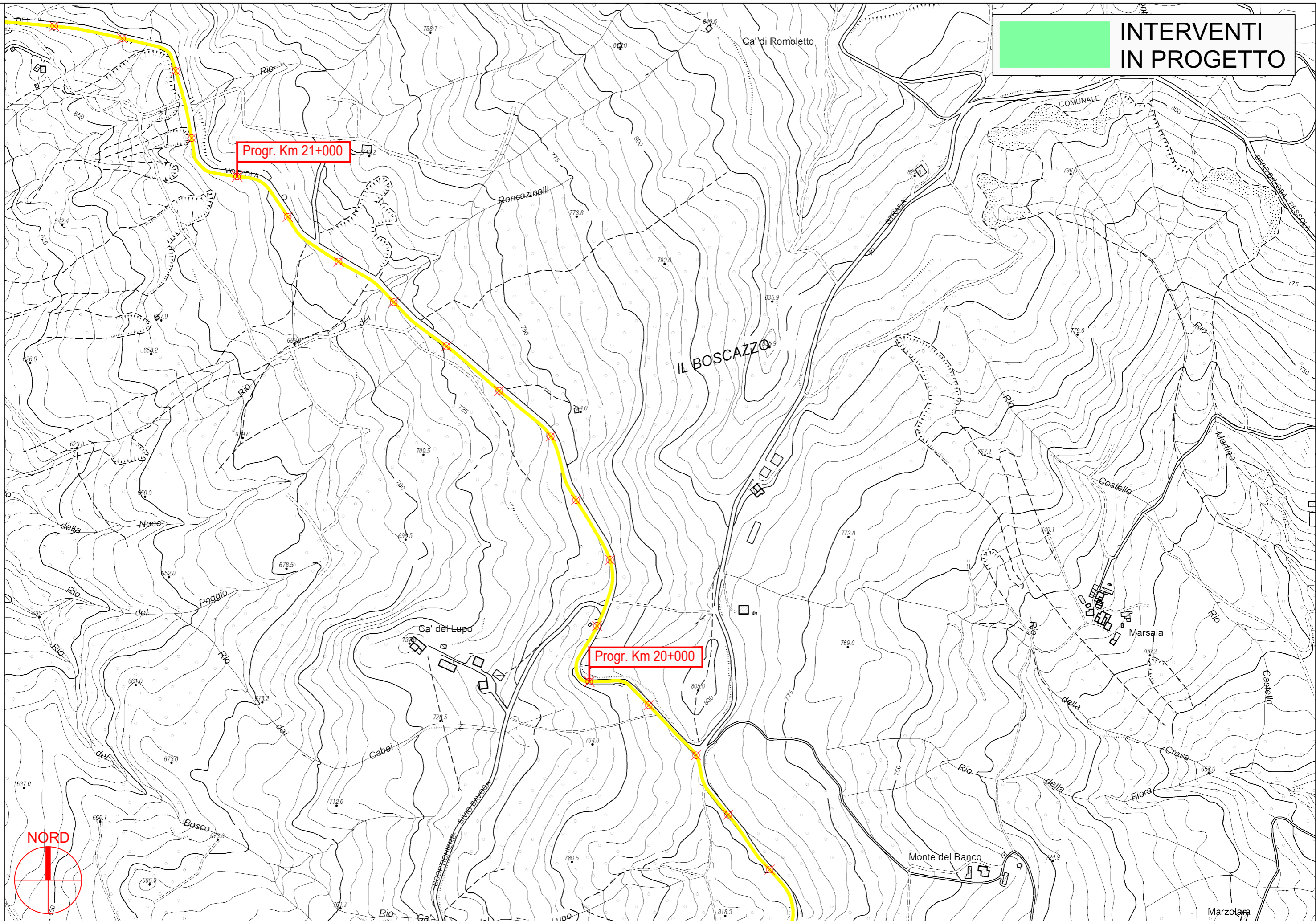
PROVINCIA DI PARMA

S.P. 42 del Mozzola - Sviluppo chilometrico 26+900 km

Tavola 9 di 13 - Scala 1 : 5.000



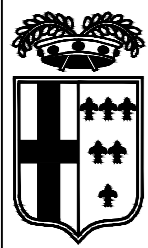
**INTERVENTI
IN PROGETTO**



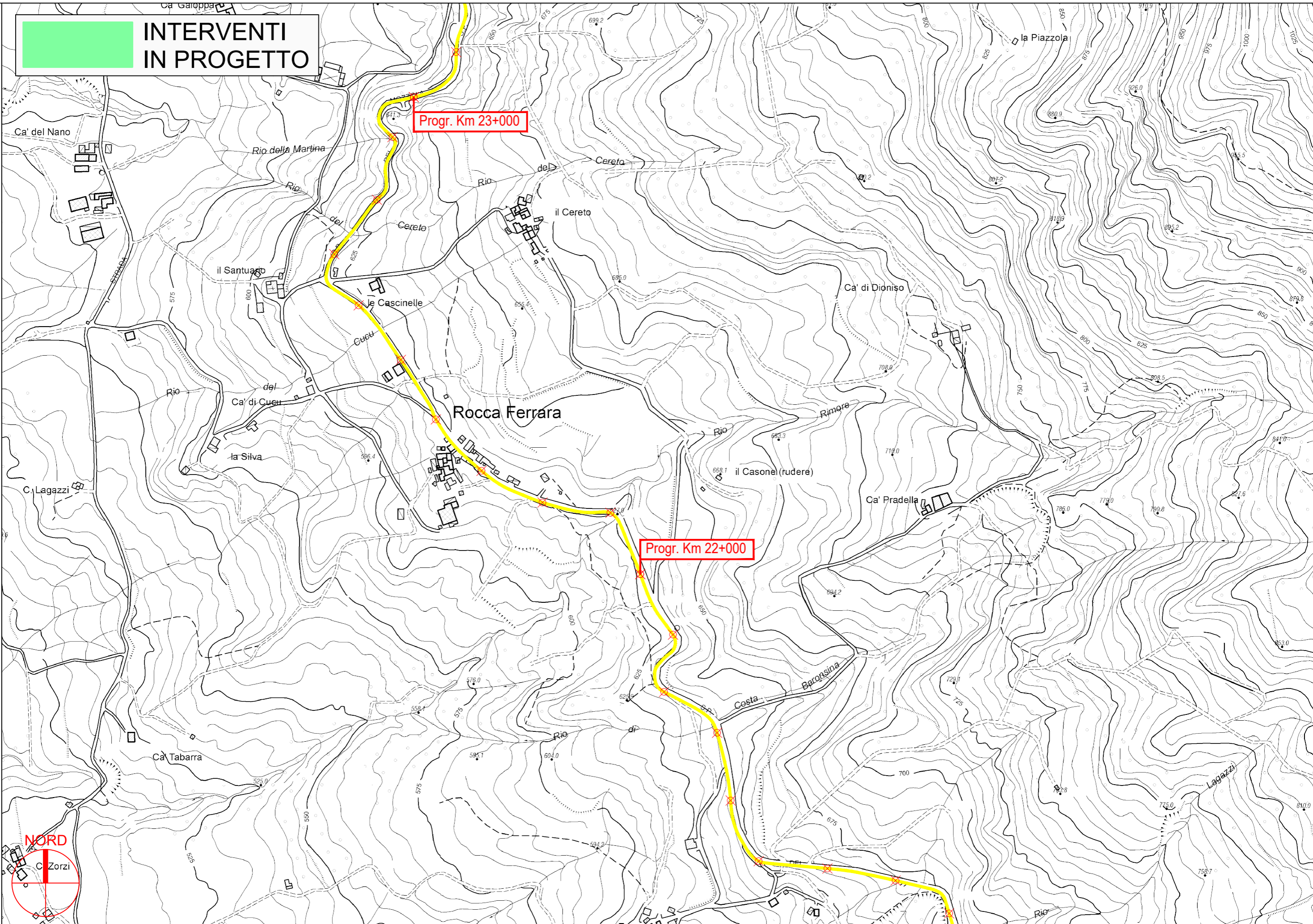
PROVINCIA DI PARMA

S.P. 42 del Mozzola - Sviluppo chilometrico 26+900 km

Tavola 10 di 13 - Scala 1 : 5.000



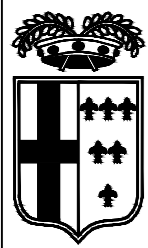
**INTERVENTI
IN PROGETTO**



PROVINCIA DI PARMA

S.P. 42 del Mozzola - Sviluppo chilometrico 26+900 km

Tavola 11 di 13 - Scala 1 : 5.000



**INTERVENTI
IN PROGETTO**

Progr. Km 25+000

Progr. Km 24+000

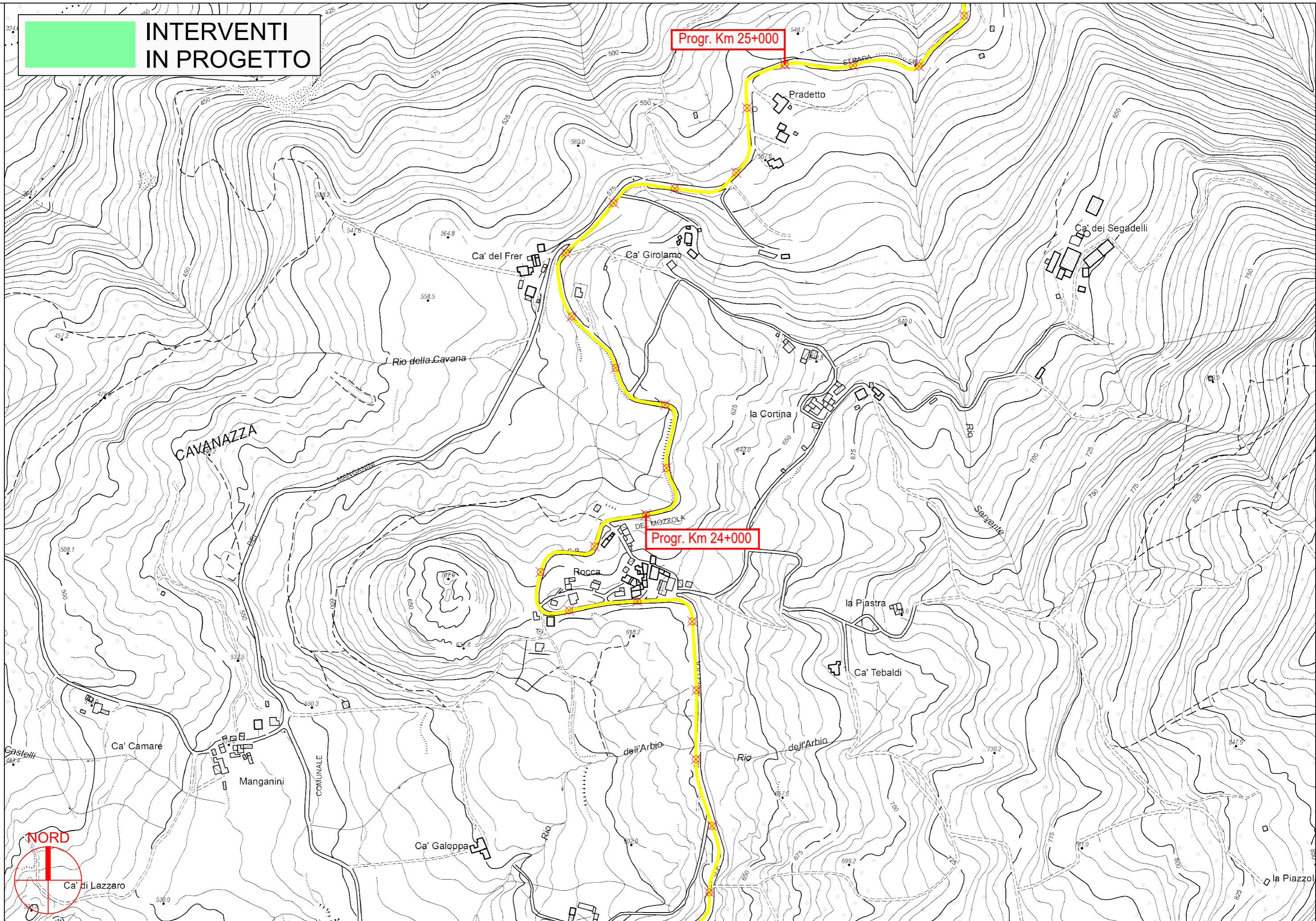
PROVINCIA DI PARMA

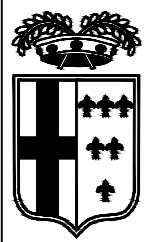
NORD



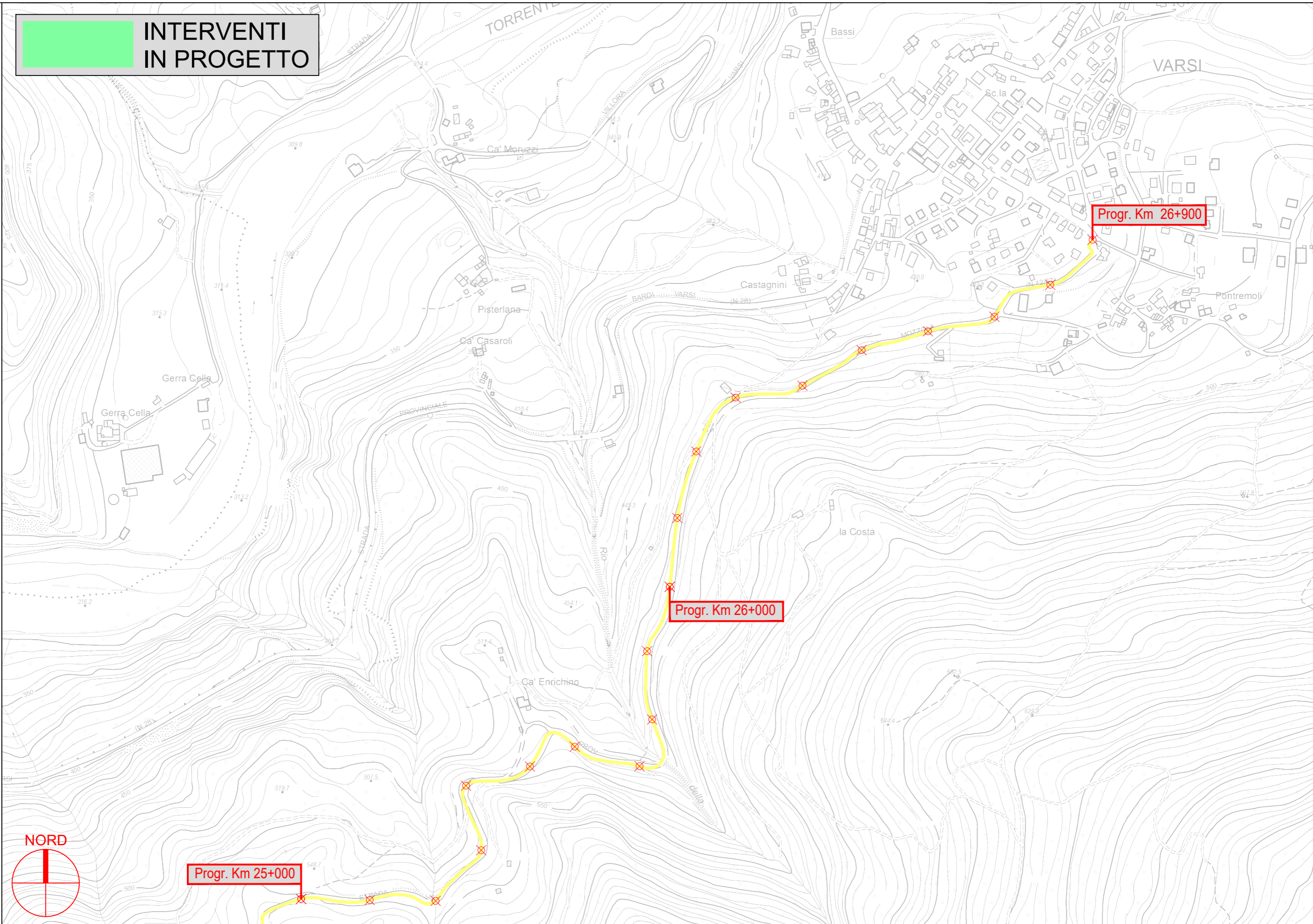
S.P. 42 del Mozzola - Sviluppo chilometrico 26+900 km

Tavola 12 di 13 - Scala 1 : 5.000





**INTERVENTI
IN PROGETTO**



PROVINCIA DI PARMA



S.P. 42 del Mozzola - Sviluppo chilometrico 26+900 km

Tavola 13 di 13 - Scala 1 : 5.000