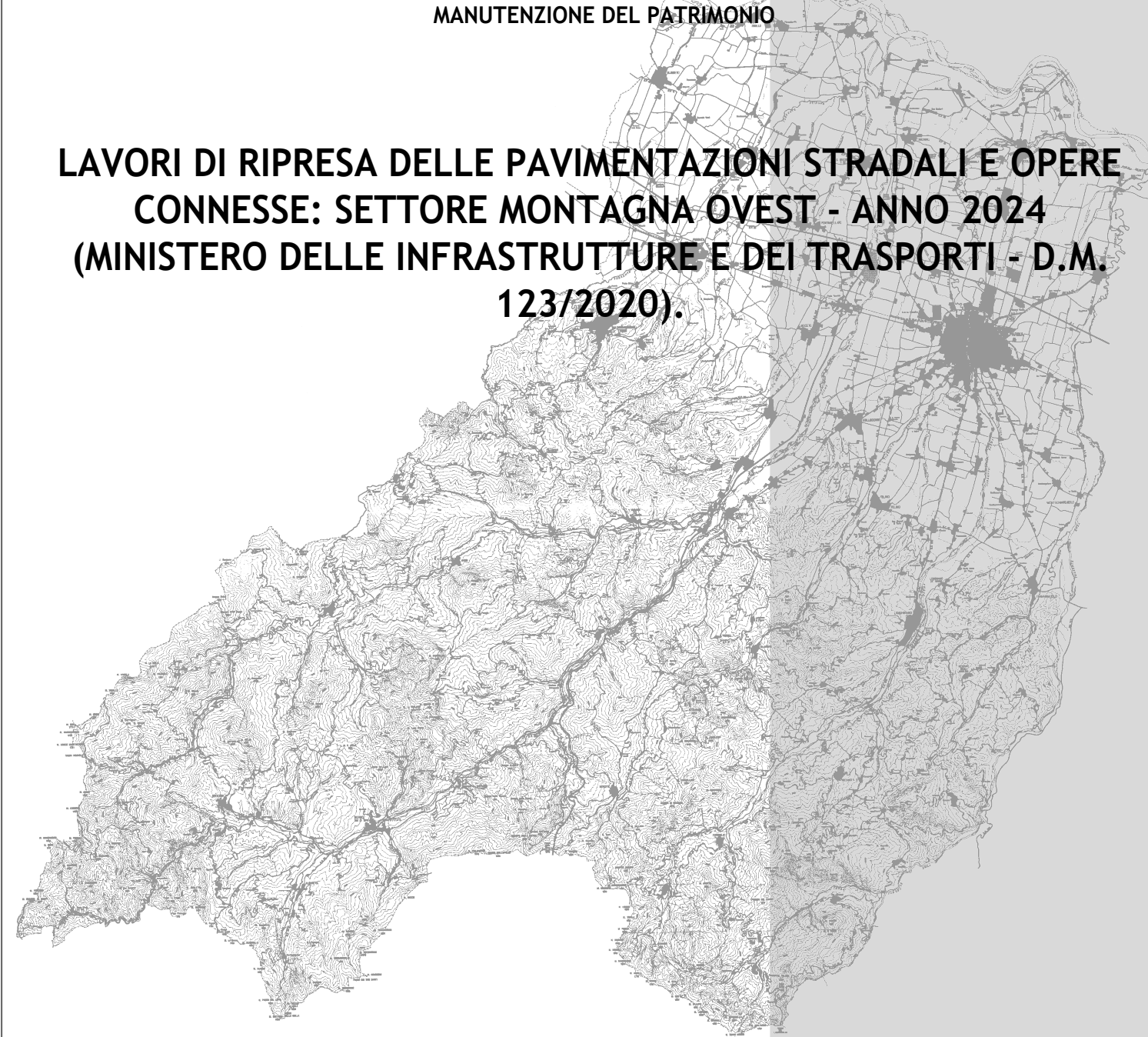


**PROVINCIA DI PARMA**  
SERVIZIO VIABILITA' E INFRASTRUTTURE  
TRASPORTI ECCEZIONALI - ESPROPRI - EDILIZIA SCOLASTICA  
MANUTENZIONE DEL PATRIMONIO

**LAVORI DI RIPRESA DELLE PAVIMENTAZIONI STRADALI E OPERE  
CONNESSE: SETTORE MONTAGNA OVEST - ANNO 2024  
(MINISTERO DELLE INFRASTRUTTURE E DEI TRASPORTI - D.M.  
123/2020).**



**PROGETTO DEFINITIVO-ESECUTIVO**

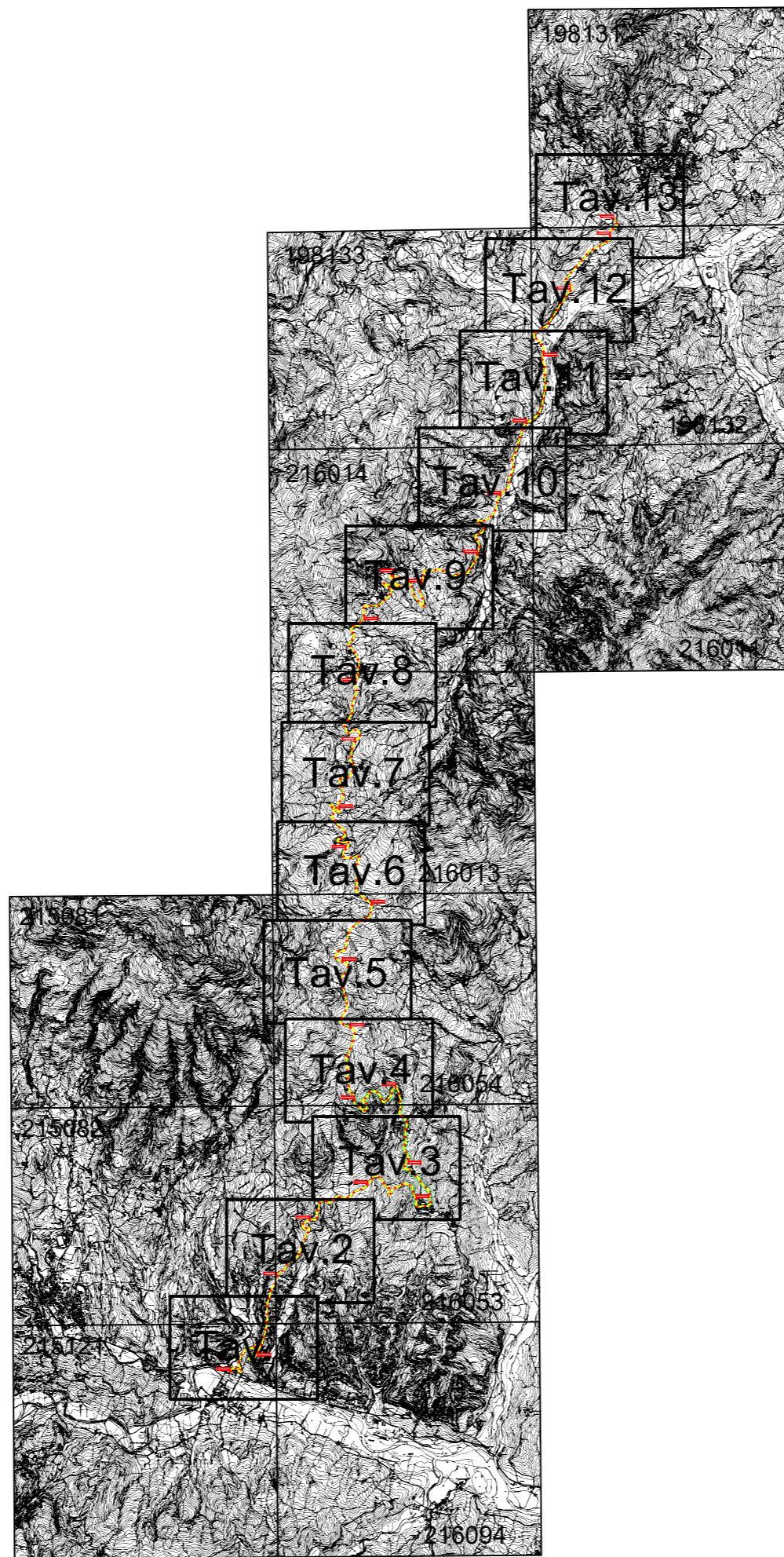
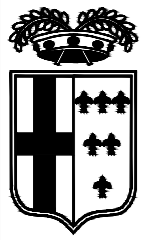
DESCRIZIONE	ELABORATO
<b>PLANIMETRIE: TRATTI DI INTERVENTO S.P. 66 DI COMPIANO</b>	<b>7.10</b>
SCALA	DATA
<b>1:5.000</b>	<b>FEBBRAIO 2024</b>

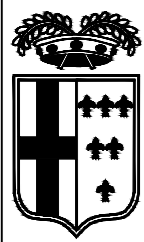
Il Responsabile del Servizio  
Ing. Gianpaolo Monteverdi

Il Responsabile del Procedimento  
Arch. Gloria Resteghini

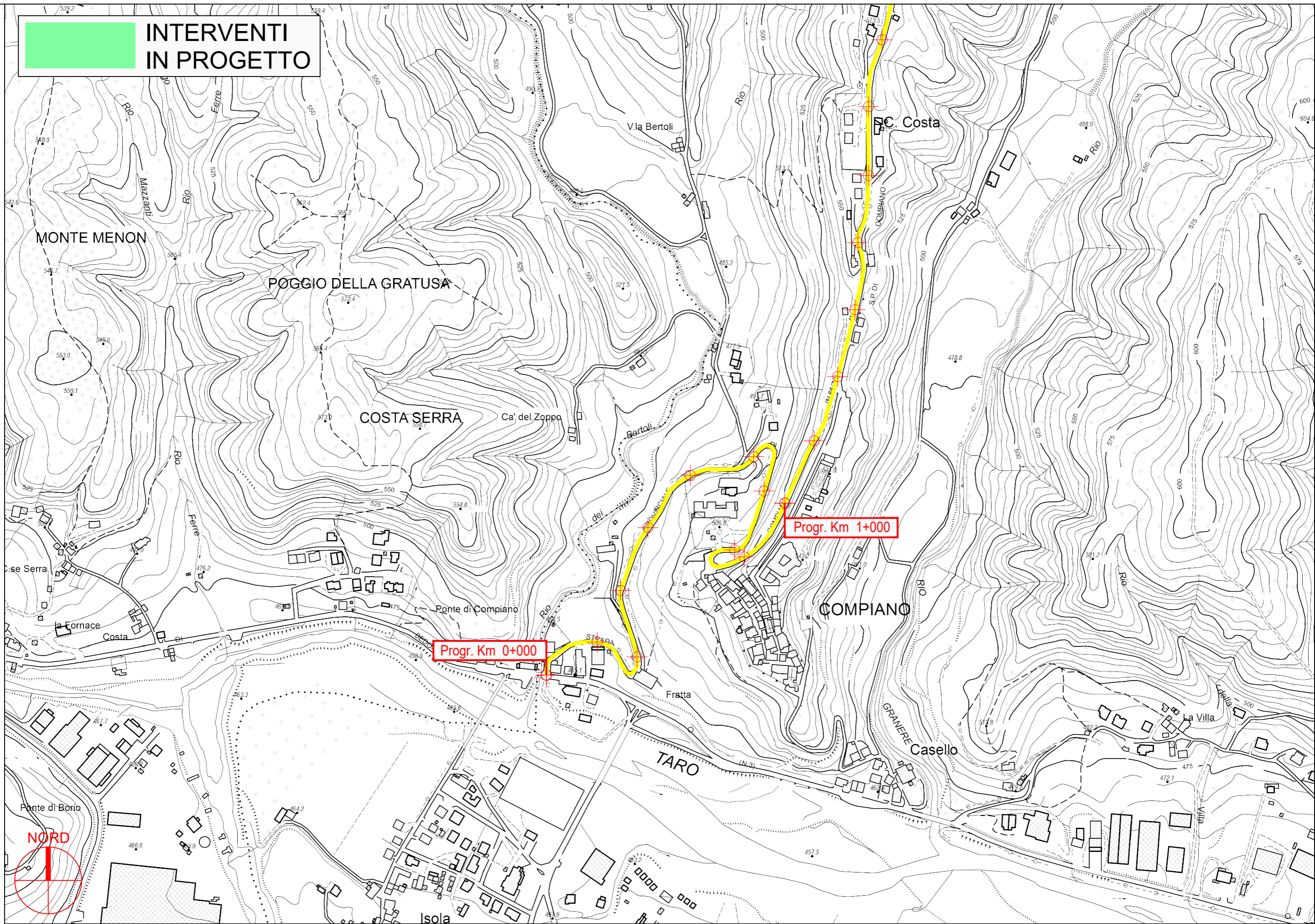
Il Progettista  
Geom. Antonio Mesti

Il Coordinatore  
Geom. Antonio Mesti





**INTERVENTI  
IN PROGETTO**

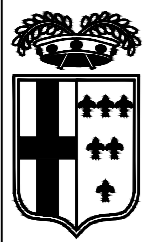


**PROVINCIA DI PARMA**

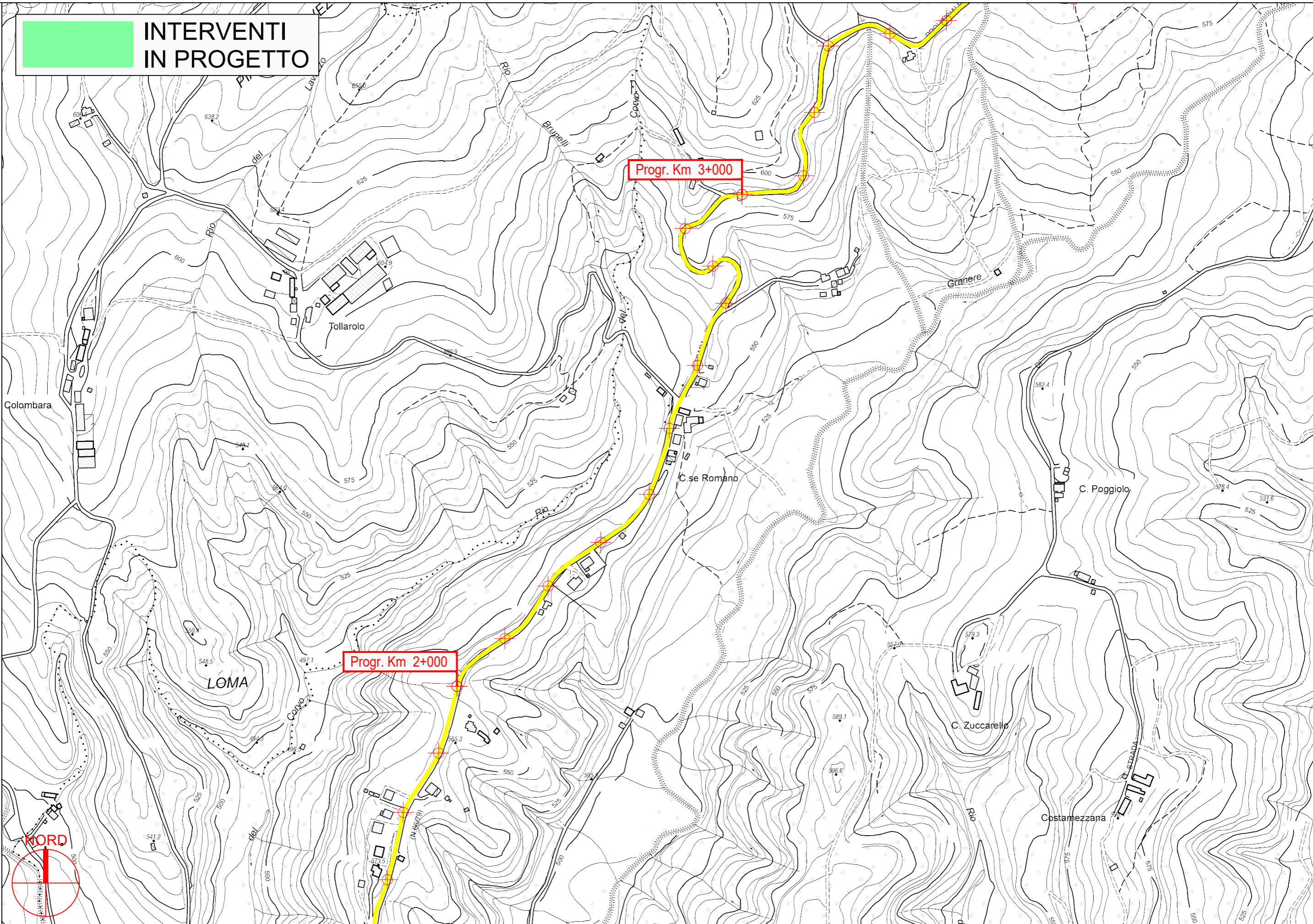


**S.P. 66 di Compiano - Sviluppo chilometrico 24+267 km**

**Tavola 1 di 13 - Scala 1 : 5.000**



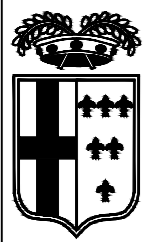
**INTERVENTI  
IN PROGETTO**



**PROVINCIA DI PARMA**

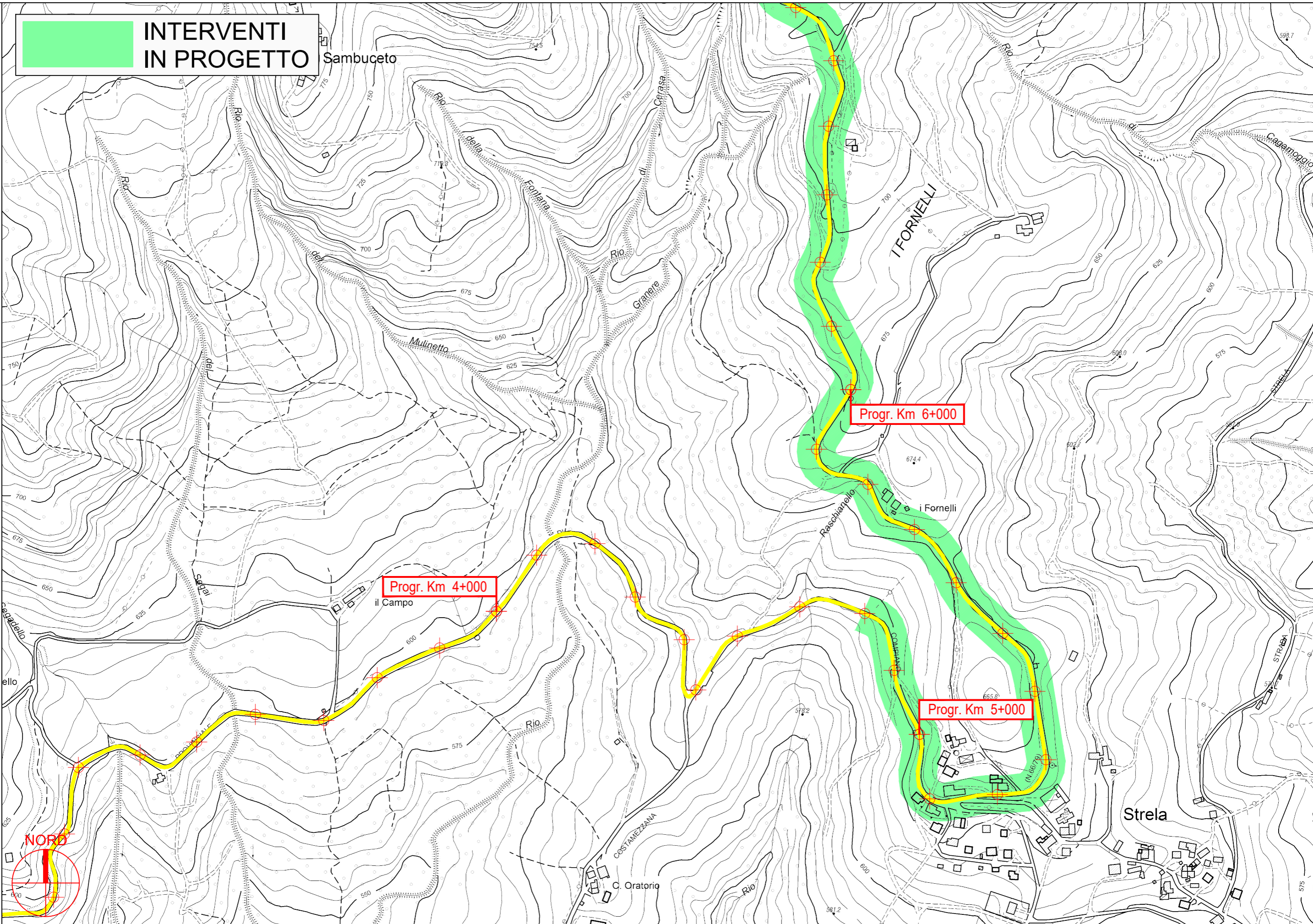
**S.P. 66 di Compiano - Sviluppo chilometrico 24+267 km**

**Tavola 2 di 13 - Scala 1 : 5.000**



**INTERVENTI  
IN PROGETTO**

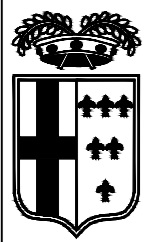
Sambuceto



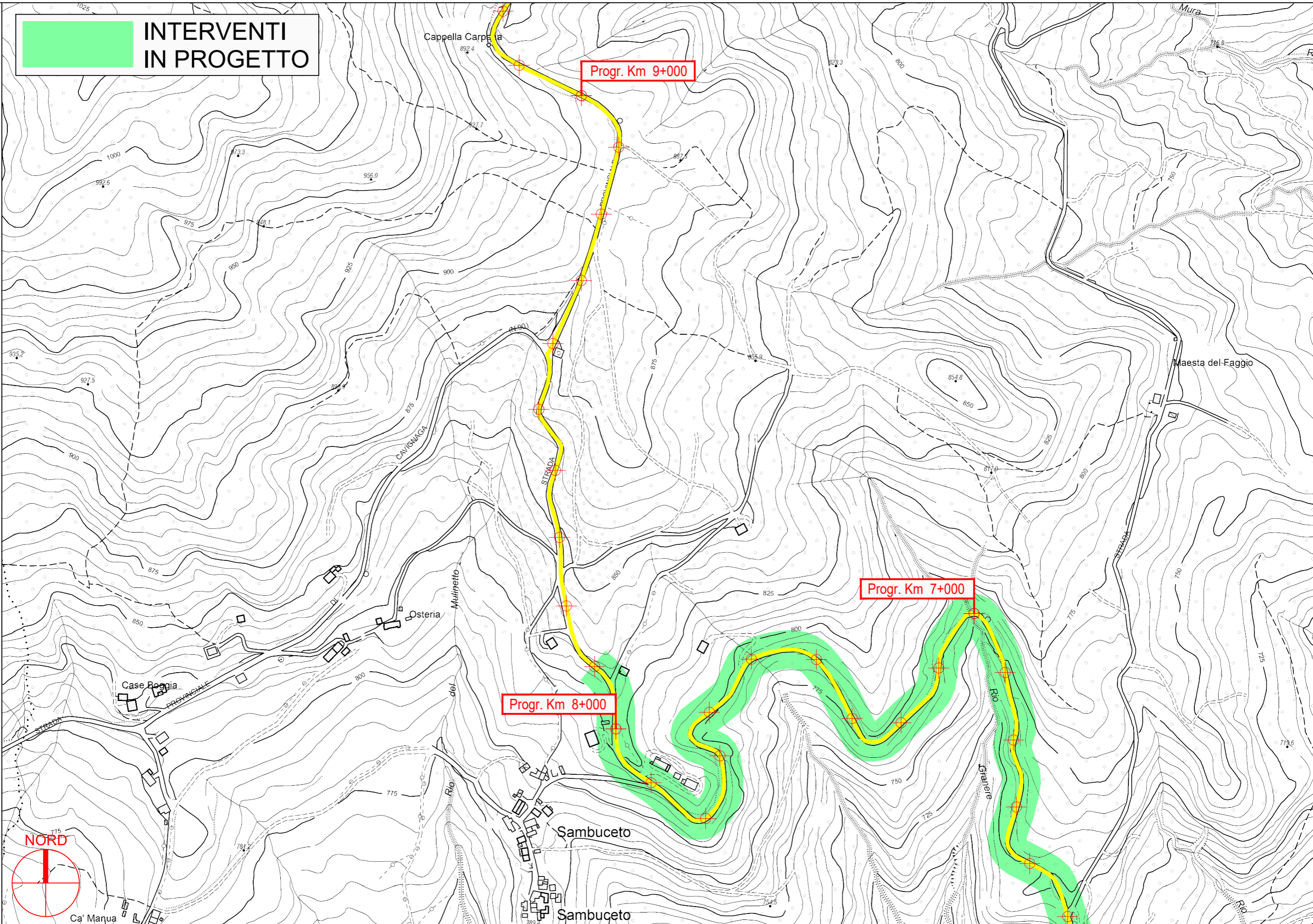
**PROVINCIA DI PARMA**

S.P. 66 di Compiano - Sviluppo chilometrico 24+267 km

Tavola 3 di 13 - Scala 1 : 5.000



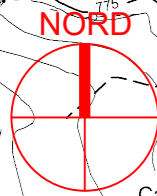
**INTERVENTI  
IN PROGETTO**



Progr. Km 9+000

Progr. Km 7+000

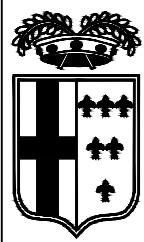
Progr. Km 8+000



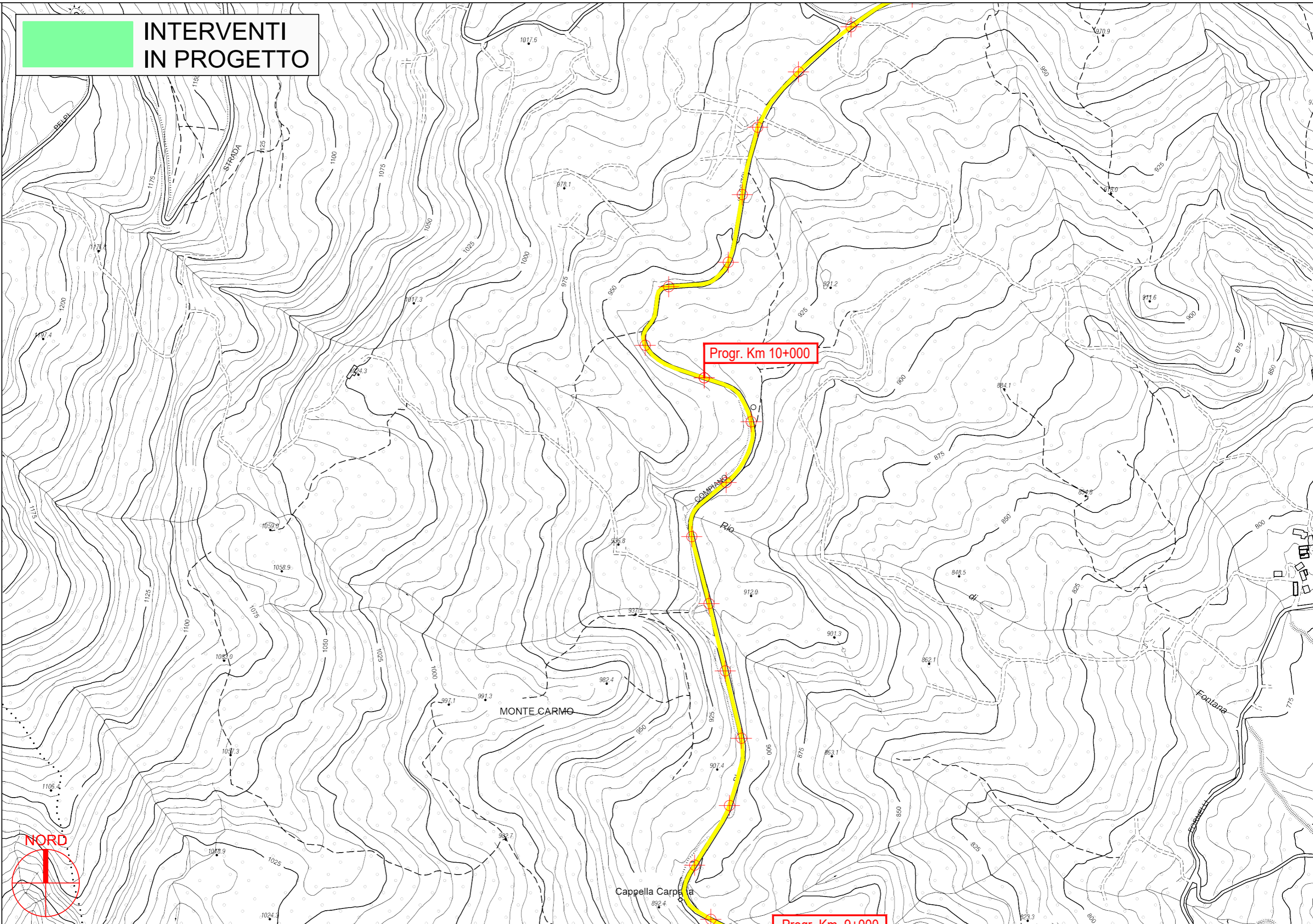
**PROVINCIA DI PARMA**

S.P. 66 di Compiano - Sviluppo chilometrico 24+267 km

Tavola 4 di 13 - Scala 1 : 5.000



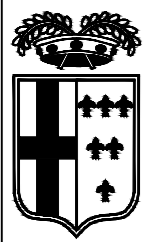
**INTERVENTI  
IN PROGETTO**



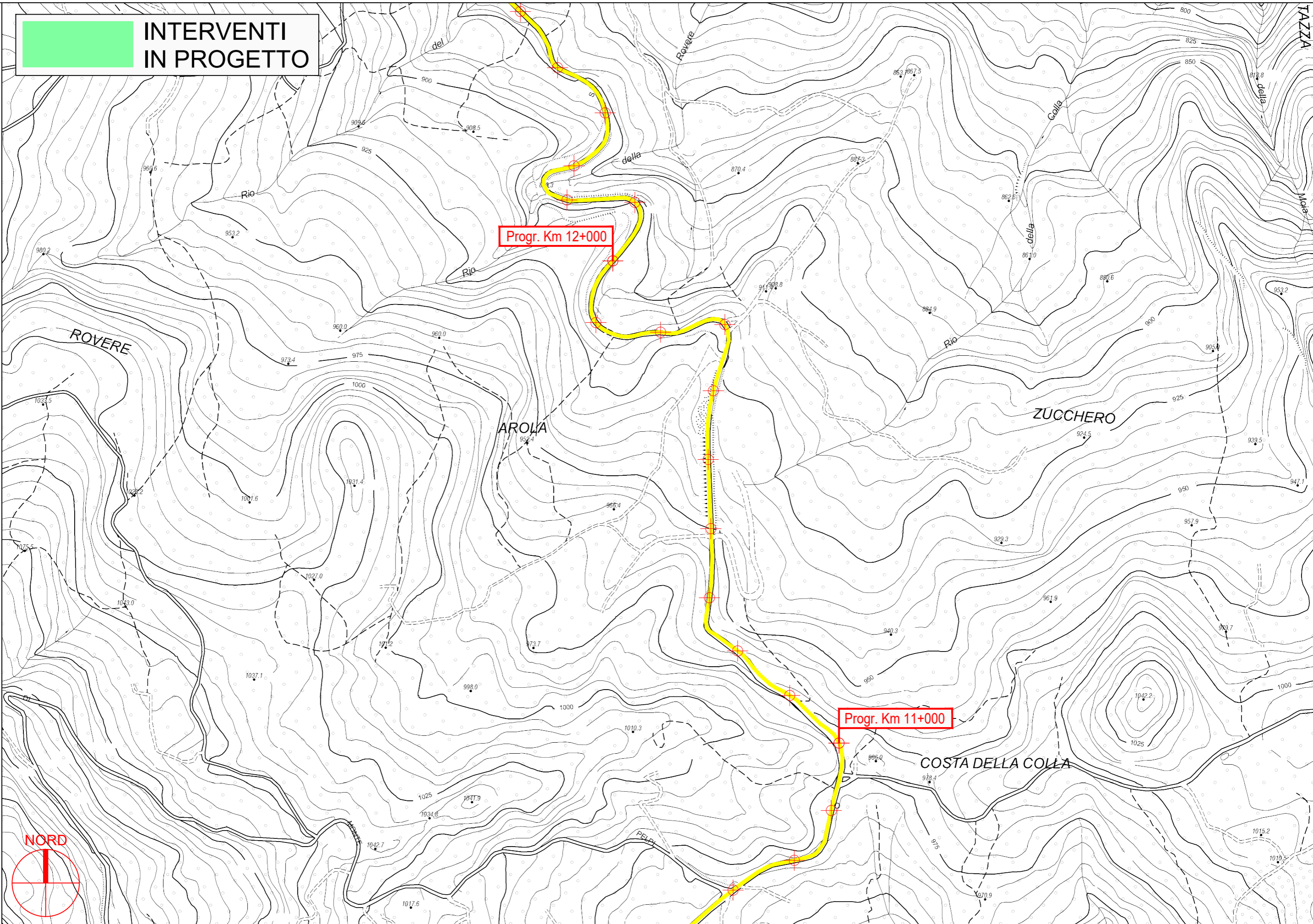
**PROVINCIA DI PARMA**

**S.P. 66 di Compiano - Sviluppo chilometrico 24+267 km**

**Tavola 5 di 13 - Scala 1 : 5.000**



**INTERVENTI  
IN PROGETTO**

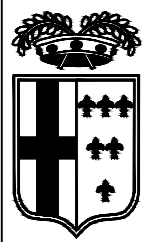


**PROVINCIA DI PARMA**

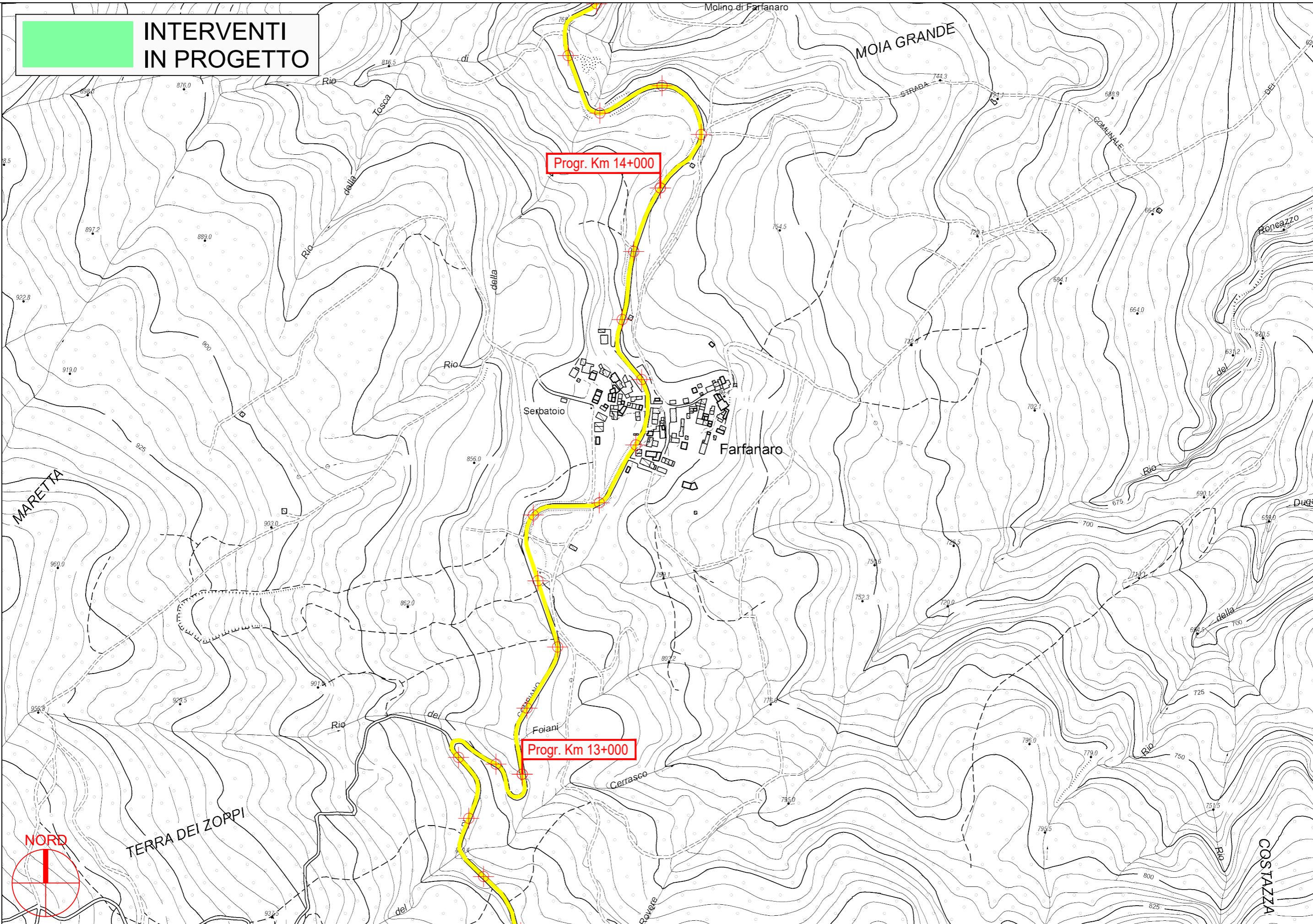
**S.P. 66 di Compiano - Sviluppo chilometrico 24+267 km**

**Tavola 6 di 13 - Scala 1 : 5.000**





**INTERVENTI  
IN PROGETTO**

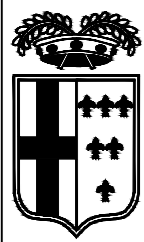


**PROVINCIA DI PARMA**

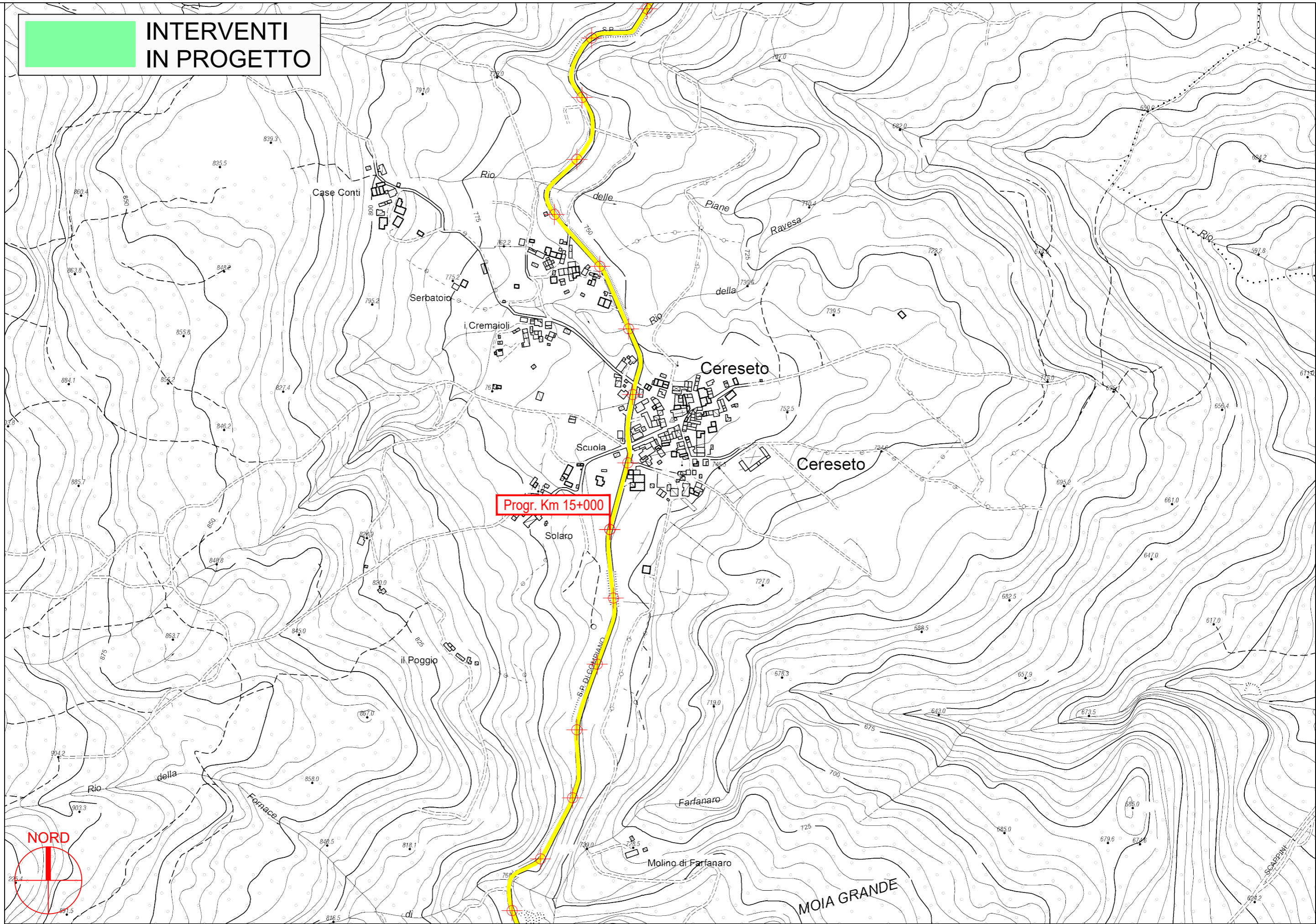


**S.P. 66 di Compiano - Sviluppo chilometrico 24+267 km**

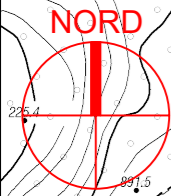
**Tavola 7 di 13 - Scala 1 : 5.000**



**INTERVENTI  
IN PROGETTO**

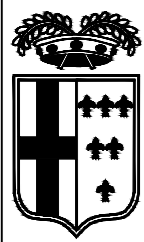


**PROVINCIA DI PARMA**

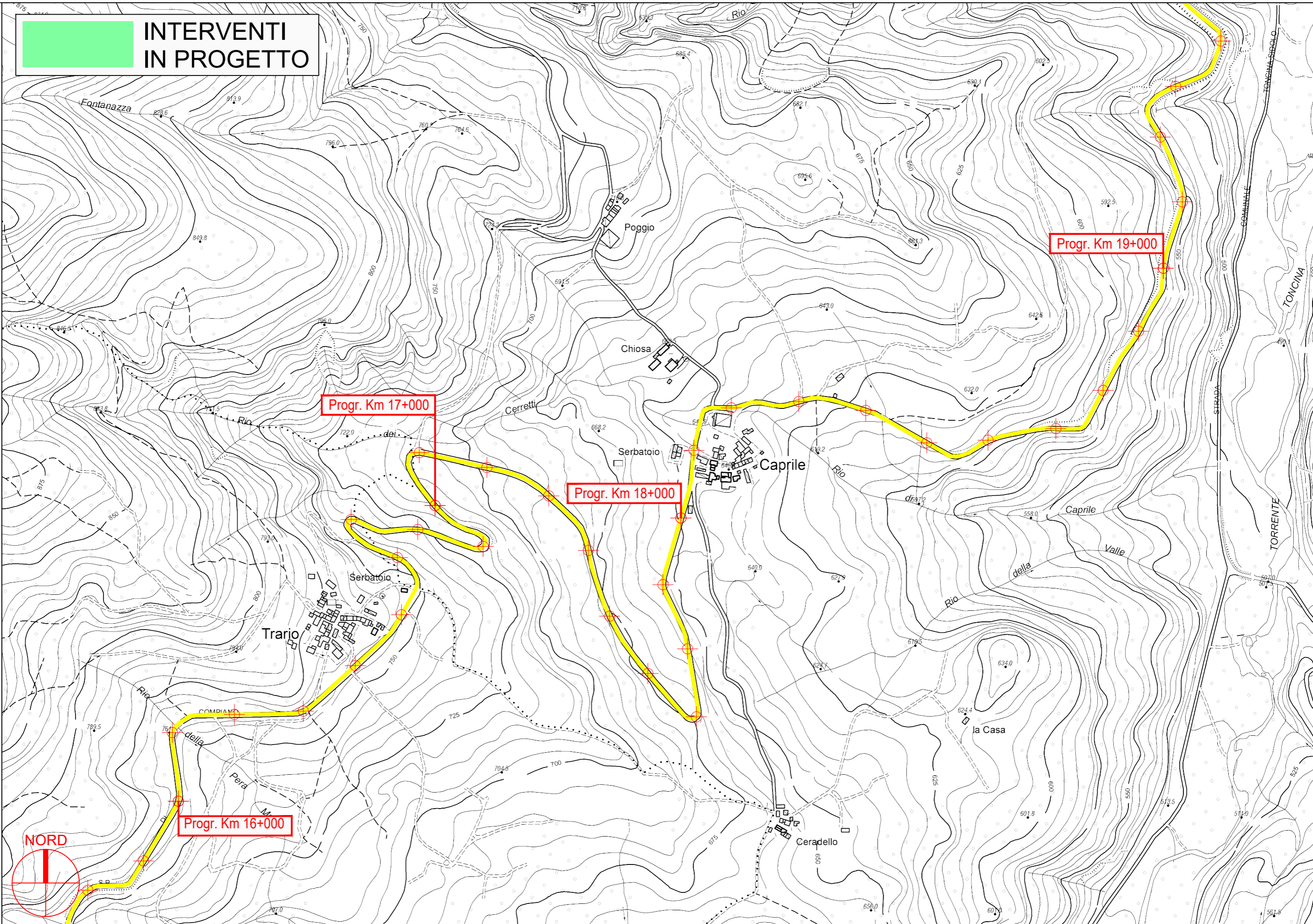


**S.P. 66 di Compiano - Sviluppo chilometrico 24+267 km**

**Tavola 8 di 13 - Scala 1 : 5.000**



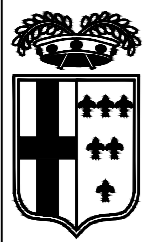
**INTERVENTI  
IN PROGETTO**



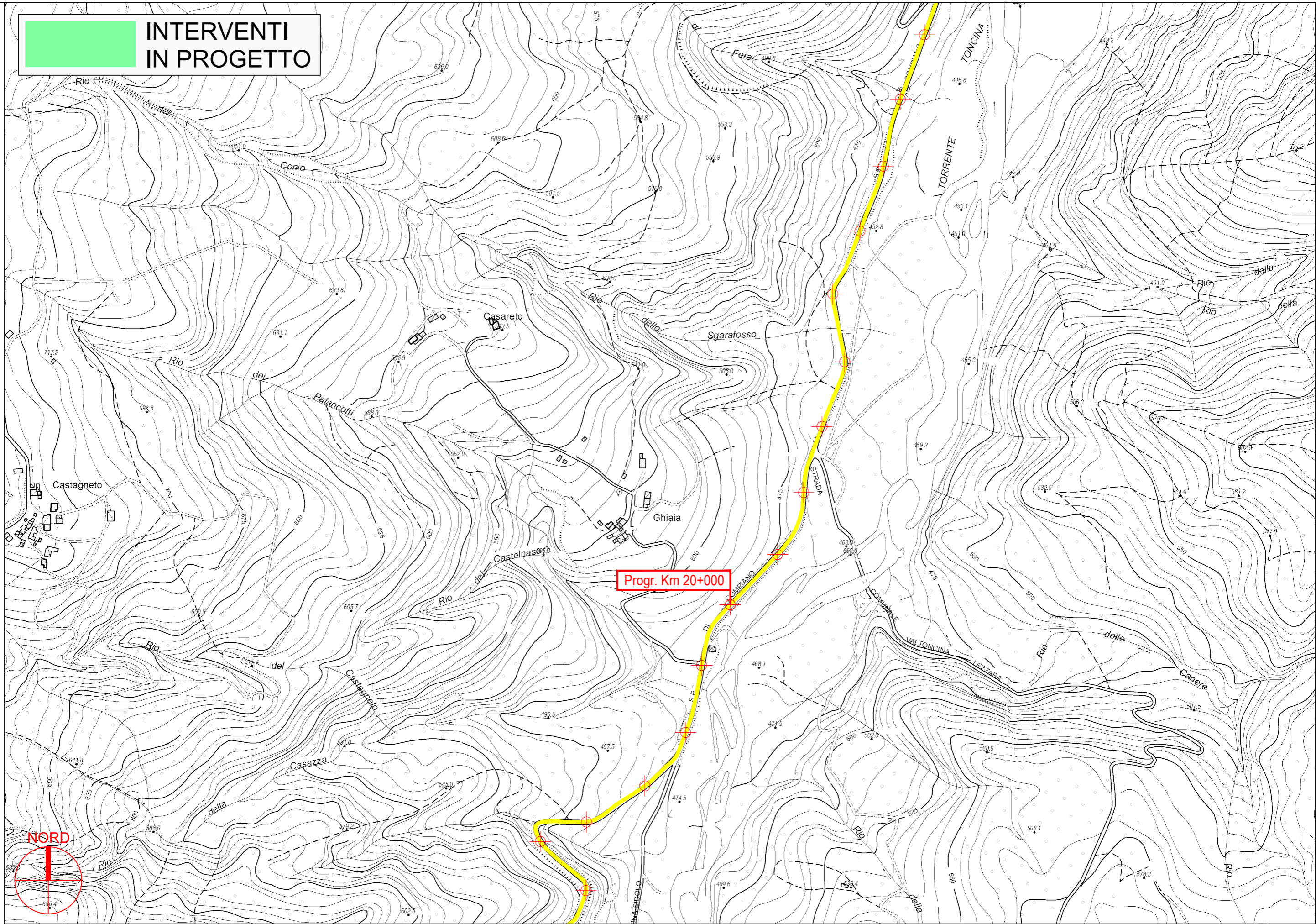
**PROVINCIA DI PARMA**

S.P. 66 di Compiano - Sviluppo chilometrico 24+267 km

Tavola 9 di 13 - Scala 1 : 5.000



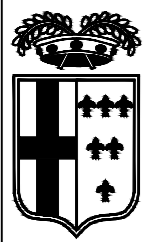
**INTERVENTI  
IN PROGETTO**



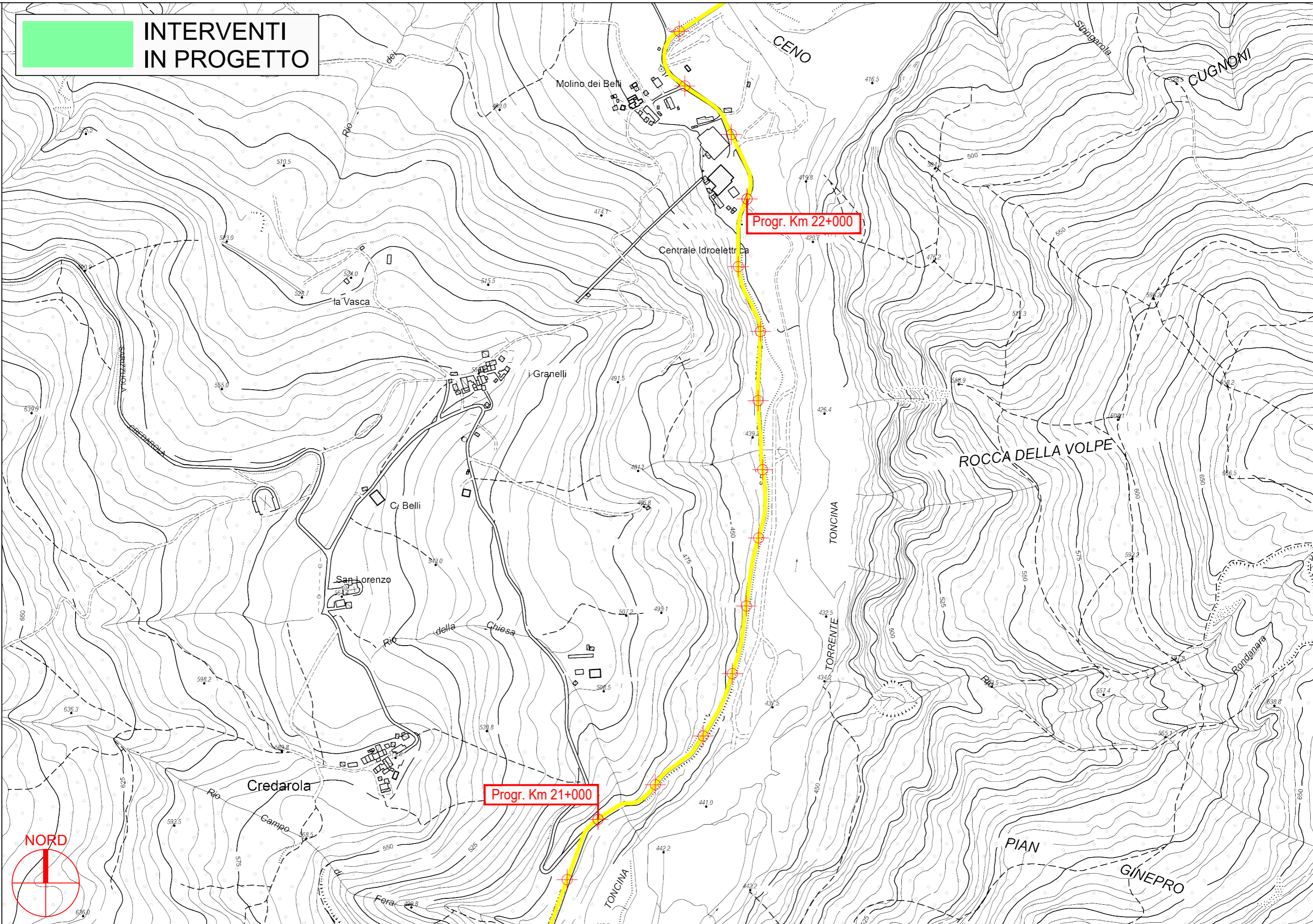
**PROVINCIA DI PARMA**

**S.P. 66 di Compiano - Sviluppo chilometrico 24+267 km**

**Tavola 10 di 13 - Scala 1 : 5.000**



**INTERVENTI  
IN PROGETTO**

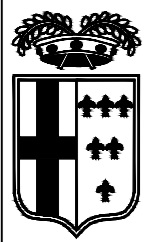


**PROVINCIA DI PARMA**

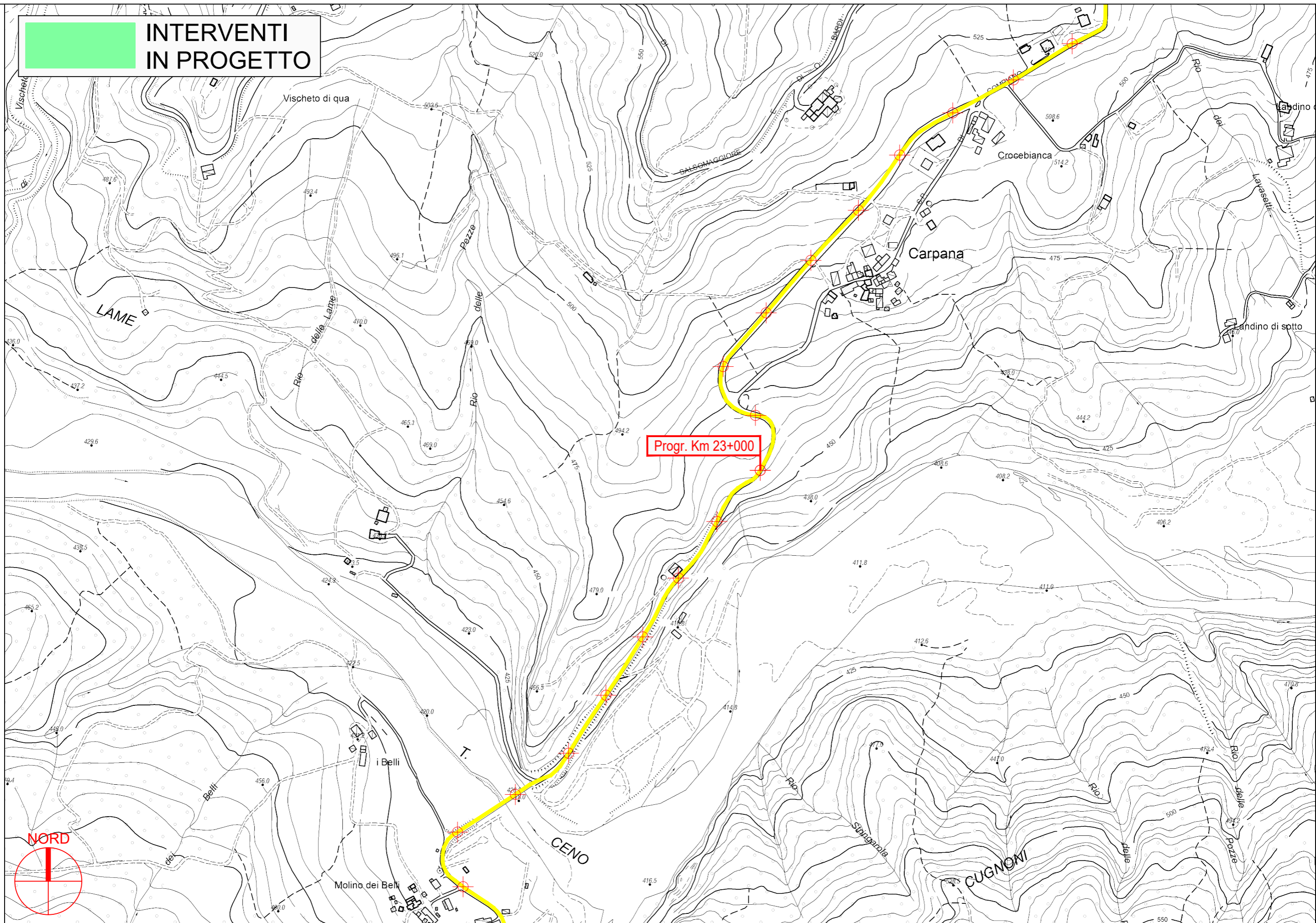


**S.P. 66 di Compiano - Sviluppo chilometrico 24+267 km**

**Tavola 11 di 13 - Scala 1 : 5.000**



**INTERVENTI  
IN PROGETTO**

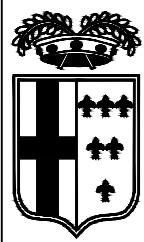


**PROVINCIA DI PARMA**

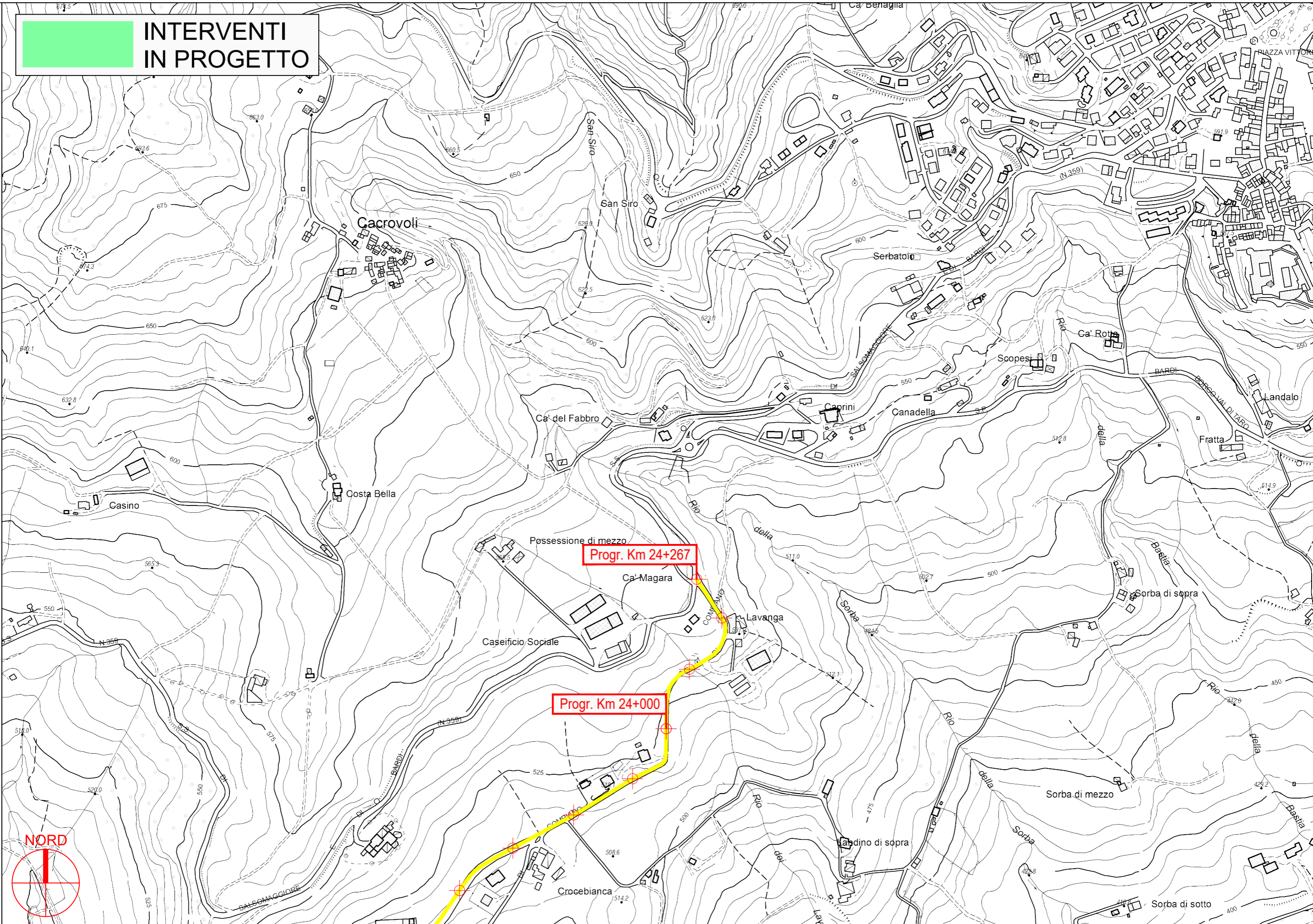


**S.P. 66 di Compiano - Sviluppo chilometrico 24+267 km**

**Tavola 12 di 13 - Scala 1 : 5.000**



**INTERVENTI  
IN PROGETTO**



**PROVINCIA DI PARMA**



**S.P. 66 di Compiano - Sviluppo chilometrico 24+267 km**

**Tavola 13 di 13 - Scala 1 : 5.000**