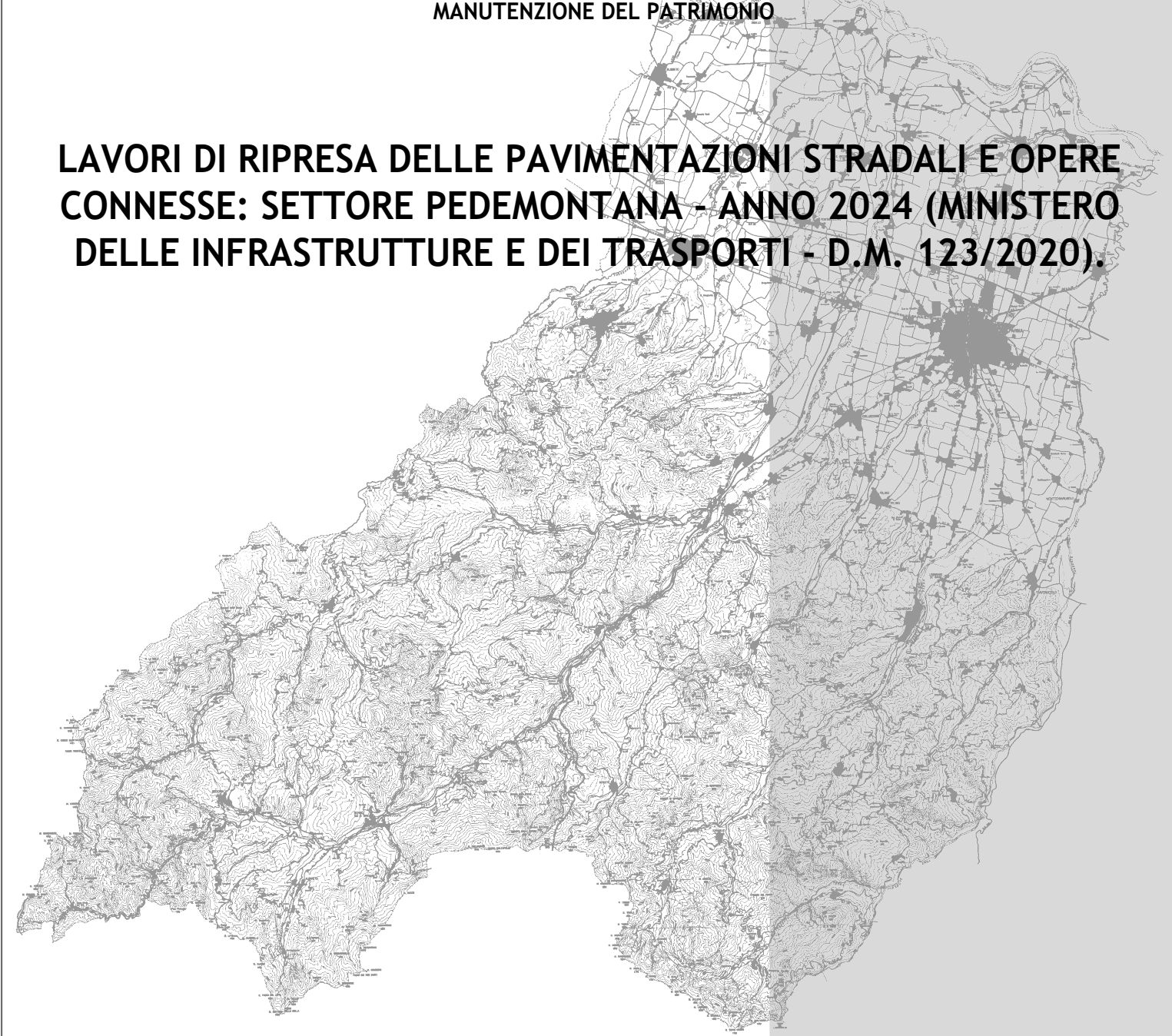




PROVINCIA DI PARMA
SERVIZIO VIABILITA' E INFRASTRUTTURE
TRASPORTI ECCEZIONALI - ESPROPRI - EDILIZIA SCOLASTICA
MANUTENZIONE DEL PATRIMONIO

**LAVORI DI RIPRESA DELLE PAVIMENTAZIONI STRADALI E OPERE
CONNESSE: SETTORE PEDEMONTANA - ANNO 2024 (MINISTERO
DELLE INFRASTRUTTURE E DEI TRASPORTI - D.M. 123/2020).**



PROGETTO DEFINITIVO-ESECUTIVO

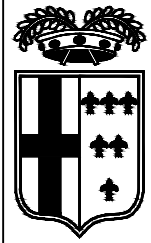
DESCRIZIONE	ELABORATO
PLANIMETRIE: TRATTI DI INTERVENTO S.P. 359R DI SALSOMAGGIORE E BARDI	7.6
SCALA	DATA
1:5.000	FEBBRAIO 2024

Il Responsabile del Servizio
Ing. Gianpaolo Monteverdi

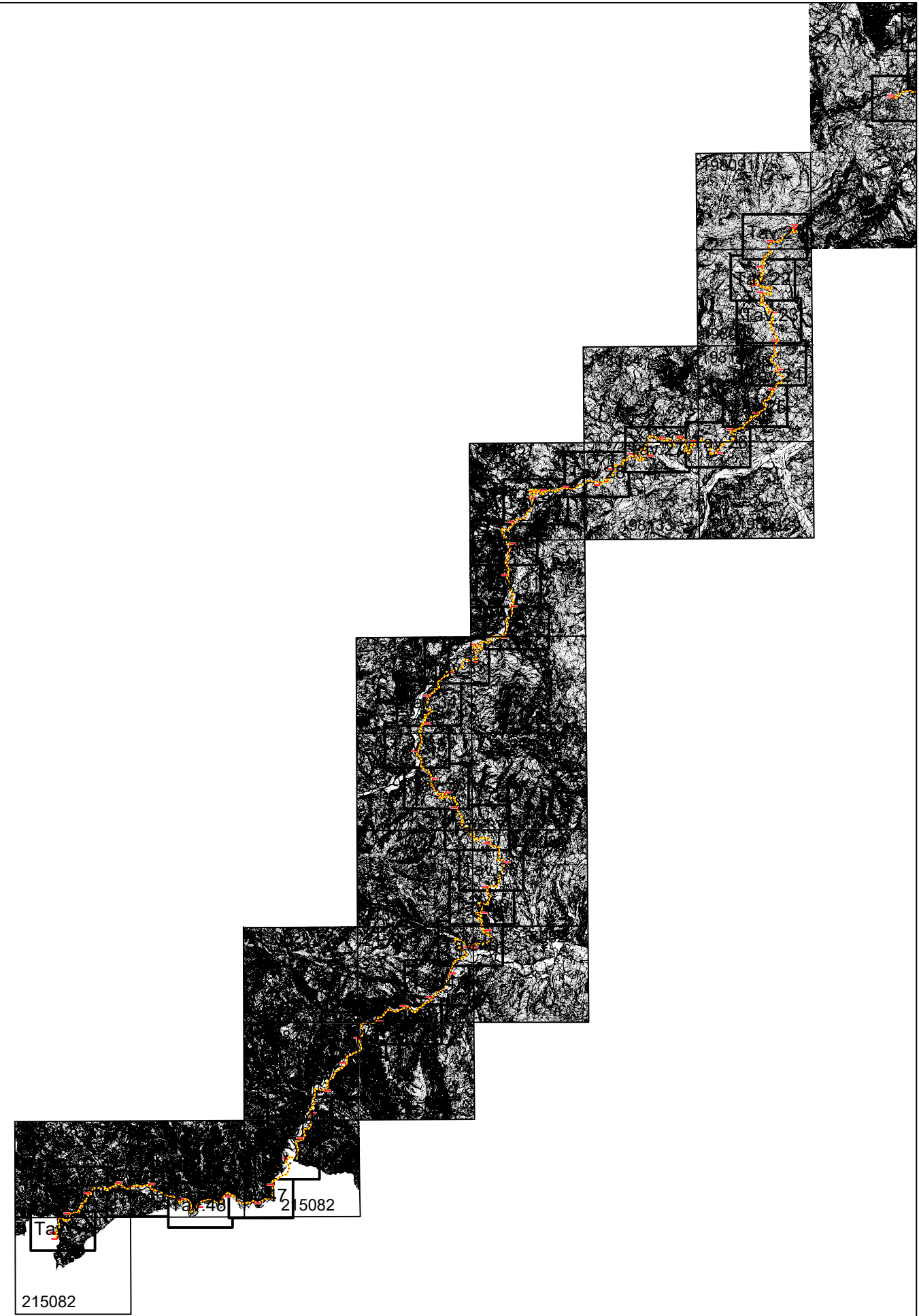
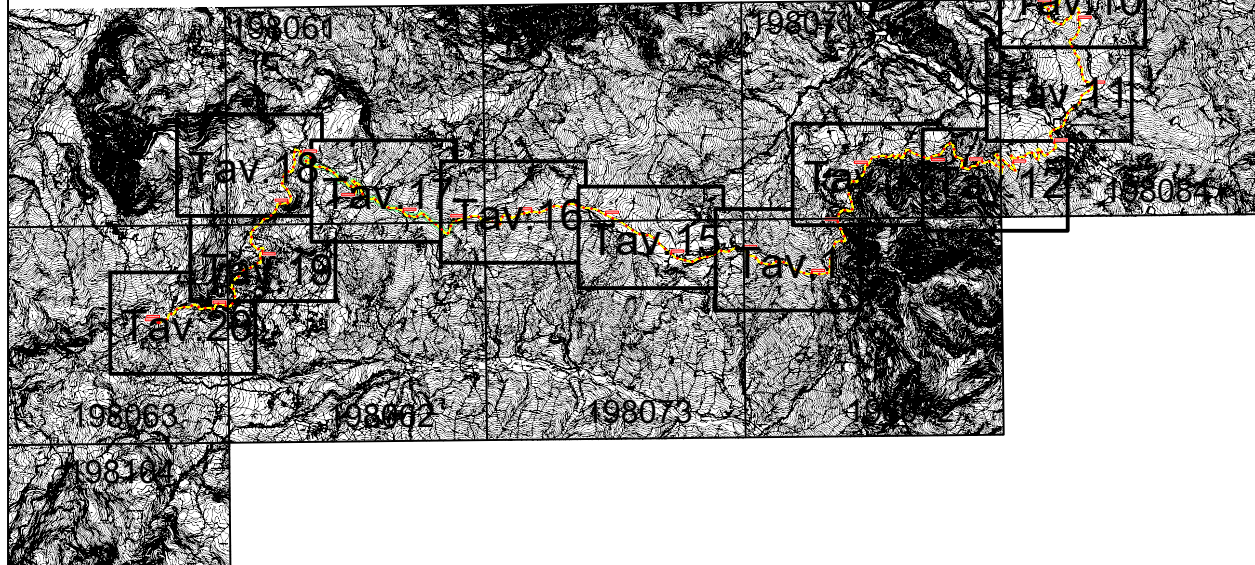
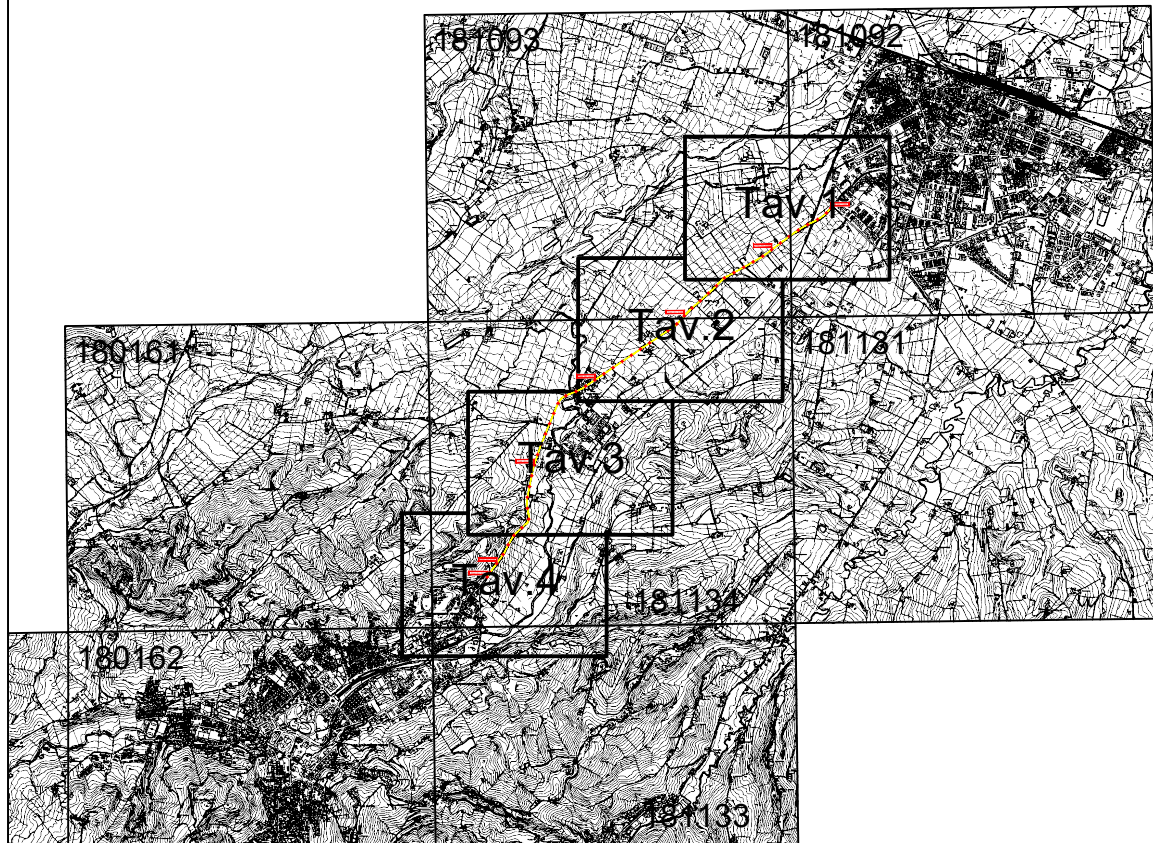
Il Responsabile del Procedimento
Arch. Gloria Resteghini

Il Progettista
Geom. Antonio Mesti

Il Coordinatore
Geom. Antonio Mesti

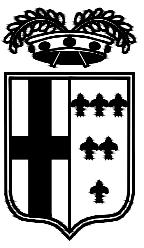


PROVINCIA DI PARMA

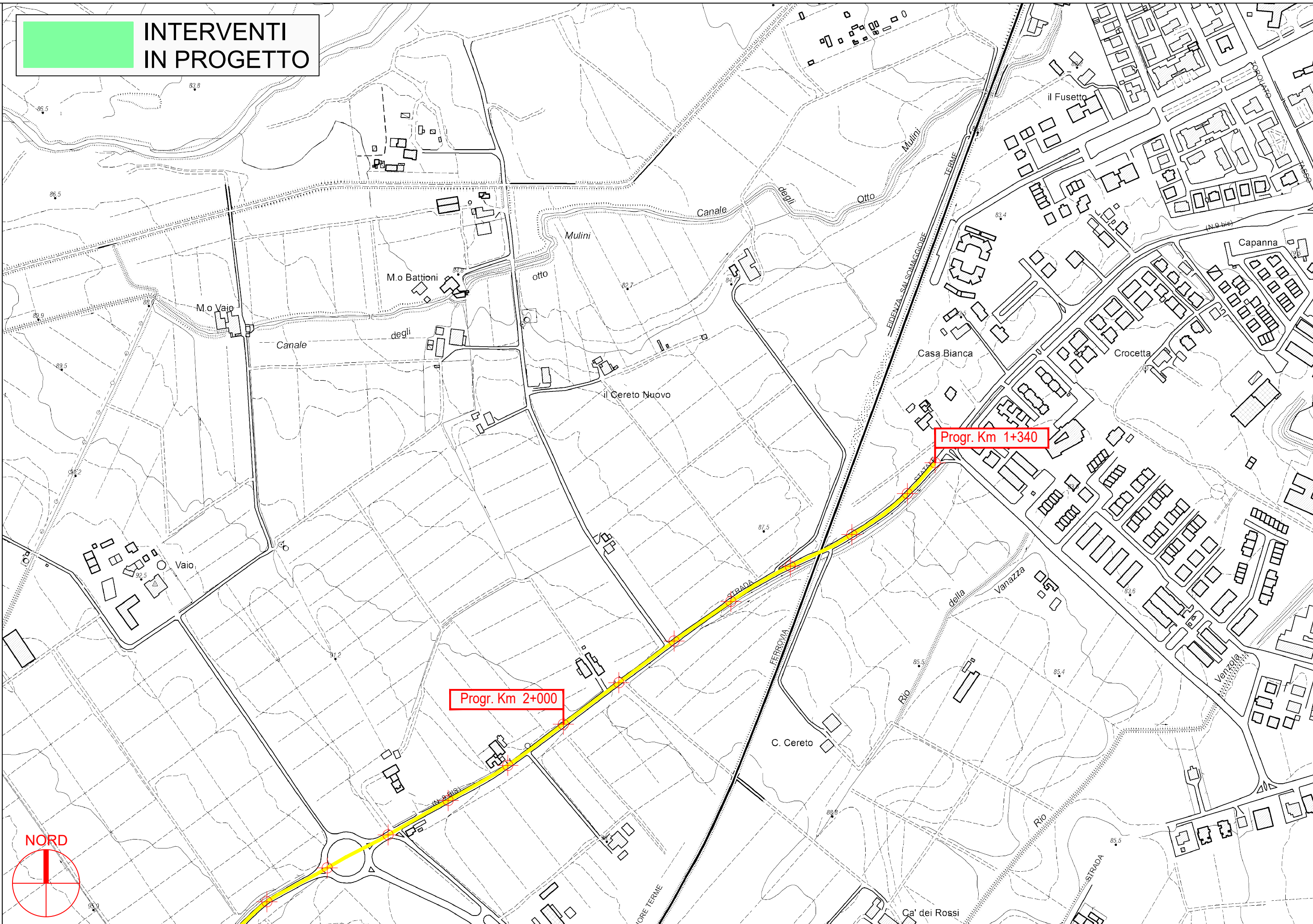


S.P. 359R di Salsomaggiore e Bardi - Sviluppo chilometrico 101+468 km

Inquadramento - Scala Adattata

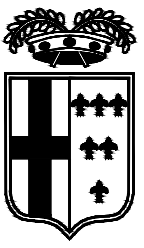


**INTERVENTI
IN PROGETTO**

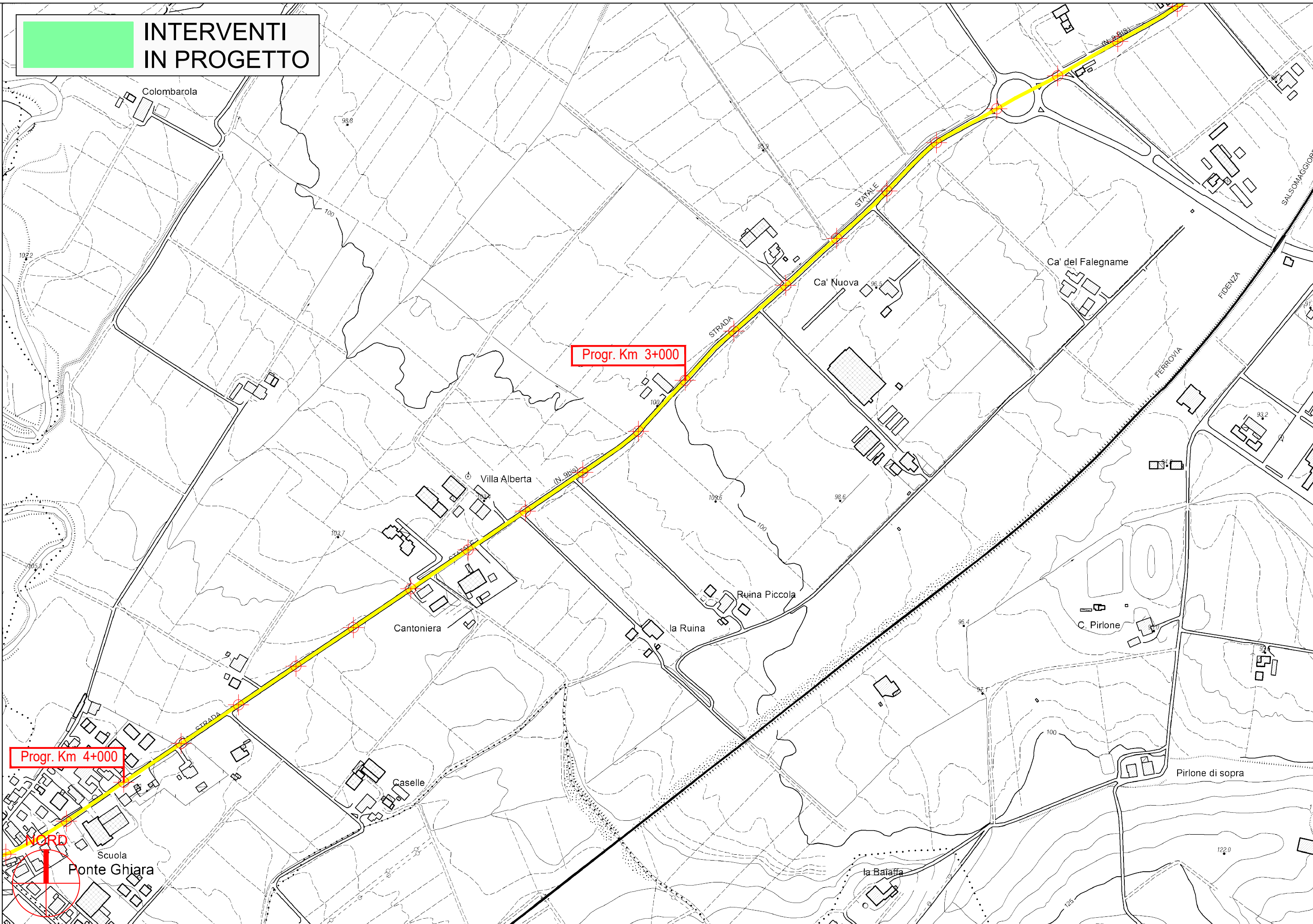


PROVINCIA DI PARMA





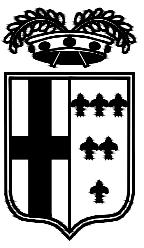
**INTERVENTI
IN PROGETTO**



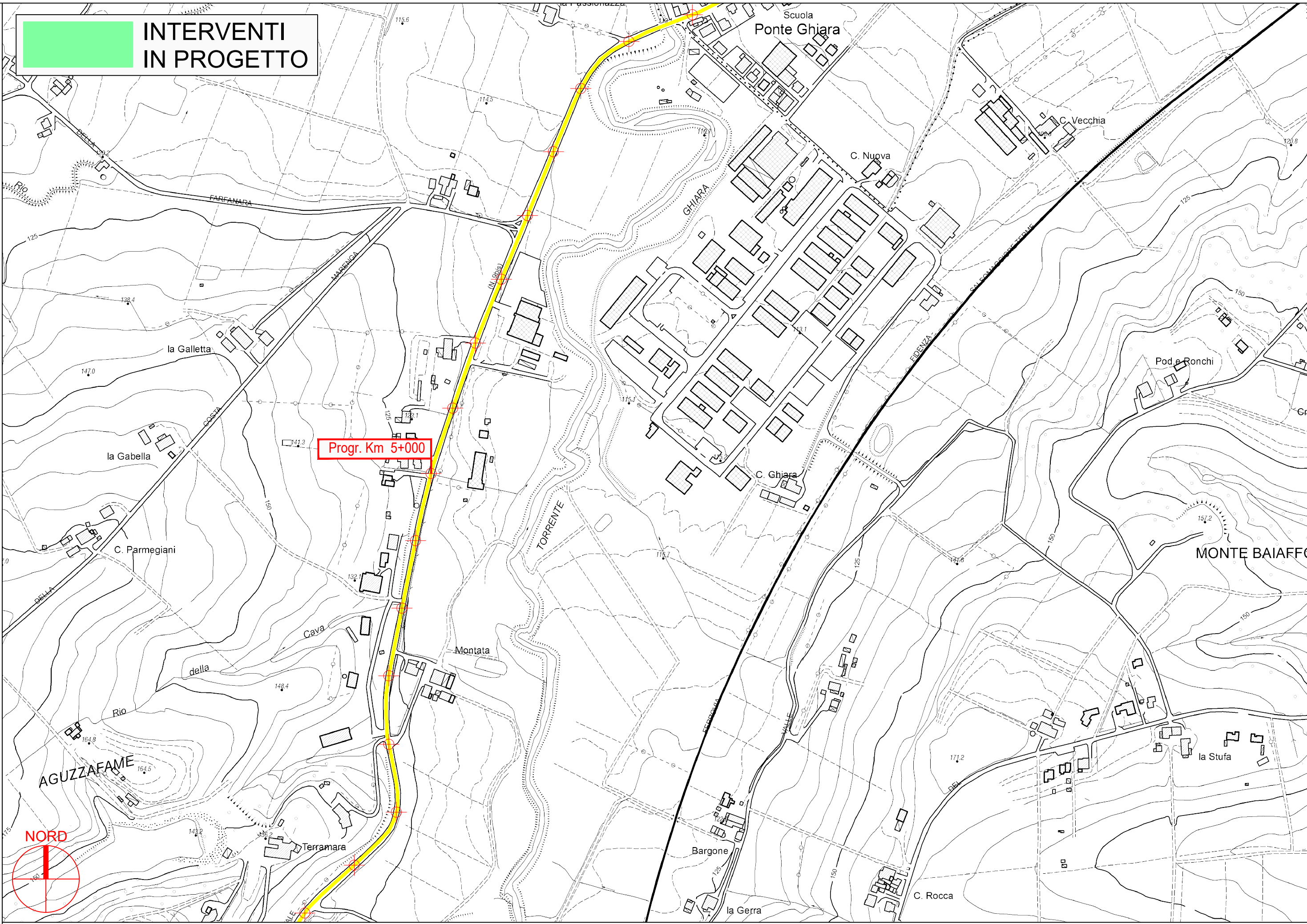
Progr. Km 3+000

Progr. Km 4+000

PROVINCIA DI PARMA



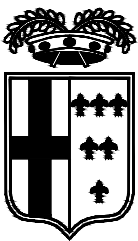
**INTERVENTI
IN PROGETTO**



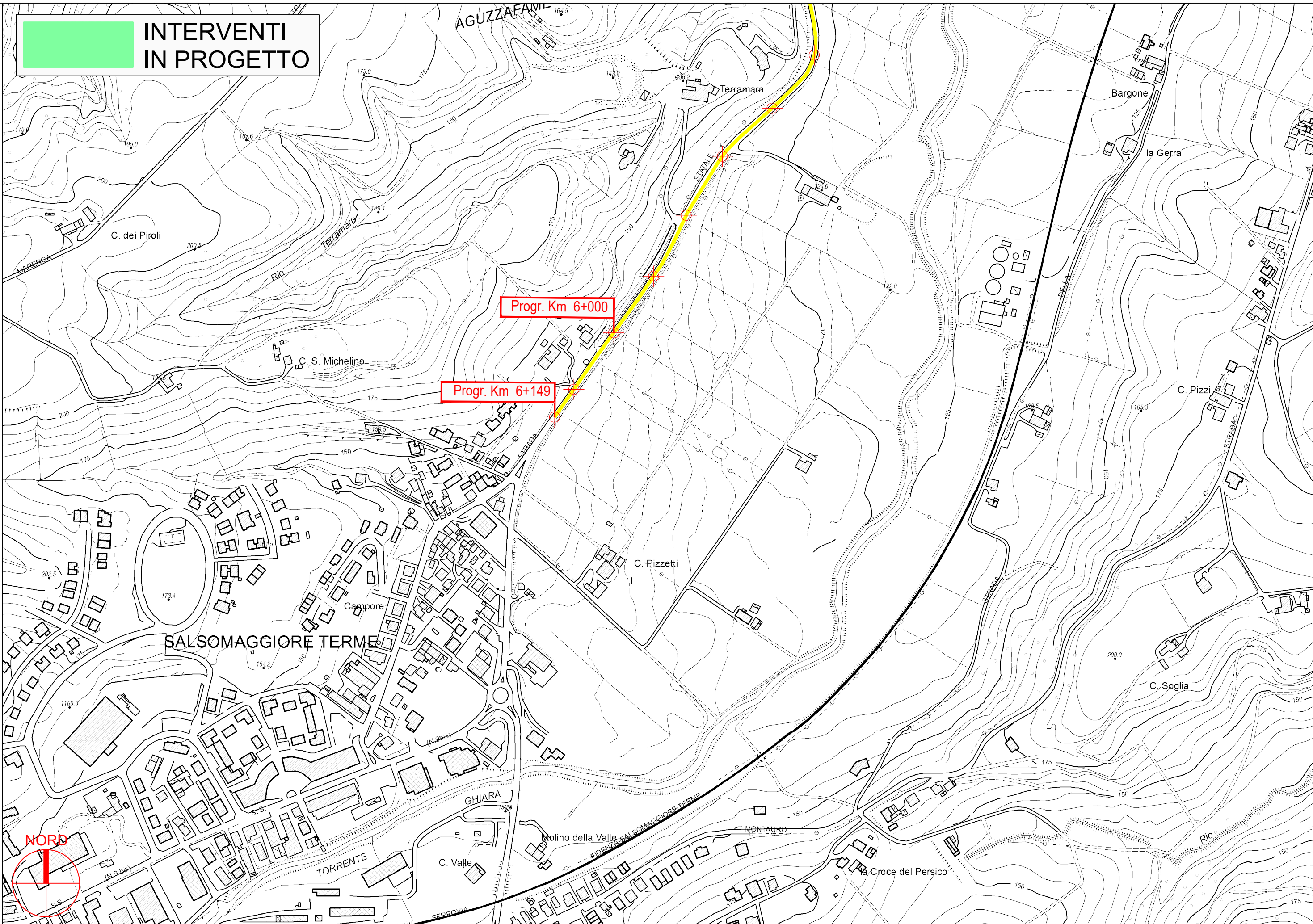
PROVINCIA DI PARMA

S.P. 359R di Salsomaggiore e Bardi - Sviluppo chilometrico 101+468 km

Tavola 3 di 51 - Scala 1 : 5.000



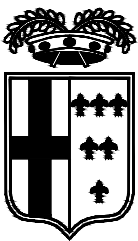
**INTERVENTI
IN PROGETTO**



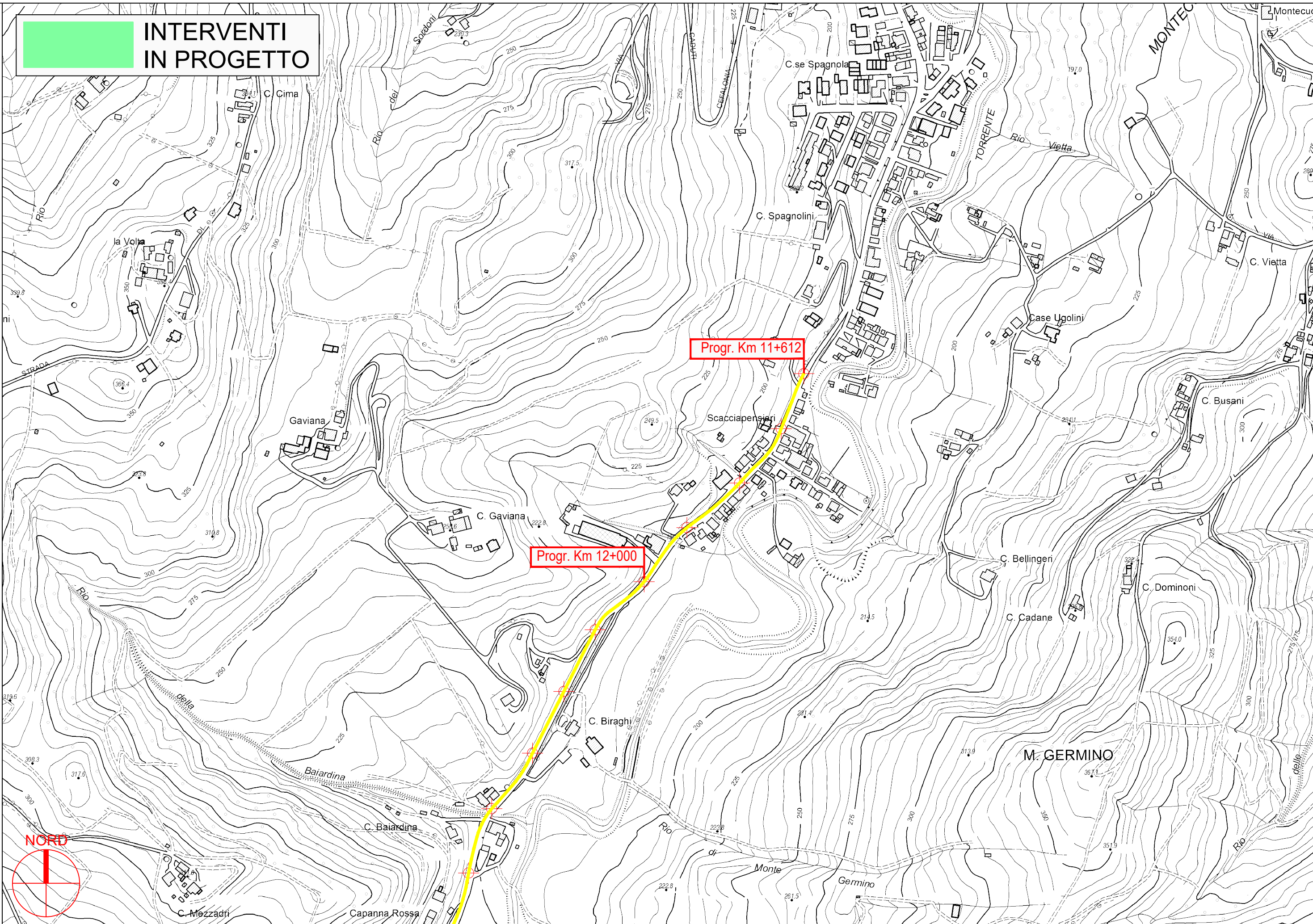
PROVINCIA DI PARMA

S.P. 359R di Salsomaggiore e Bardi - Sviluppo chilometrico 101+468 km

Tavola 4 di 51 - Scala 1 : 5.000



 **INTERVENTI
IN PROGETTO**

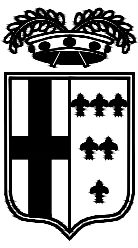


PROVINCIA DI PARMA

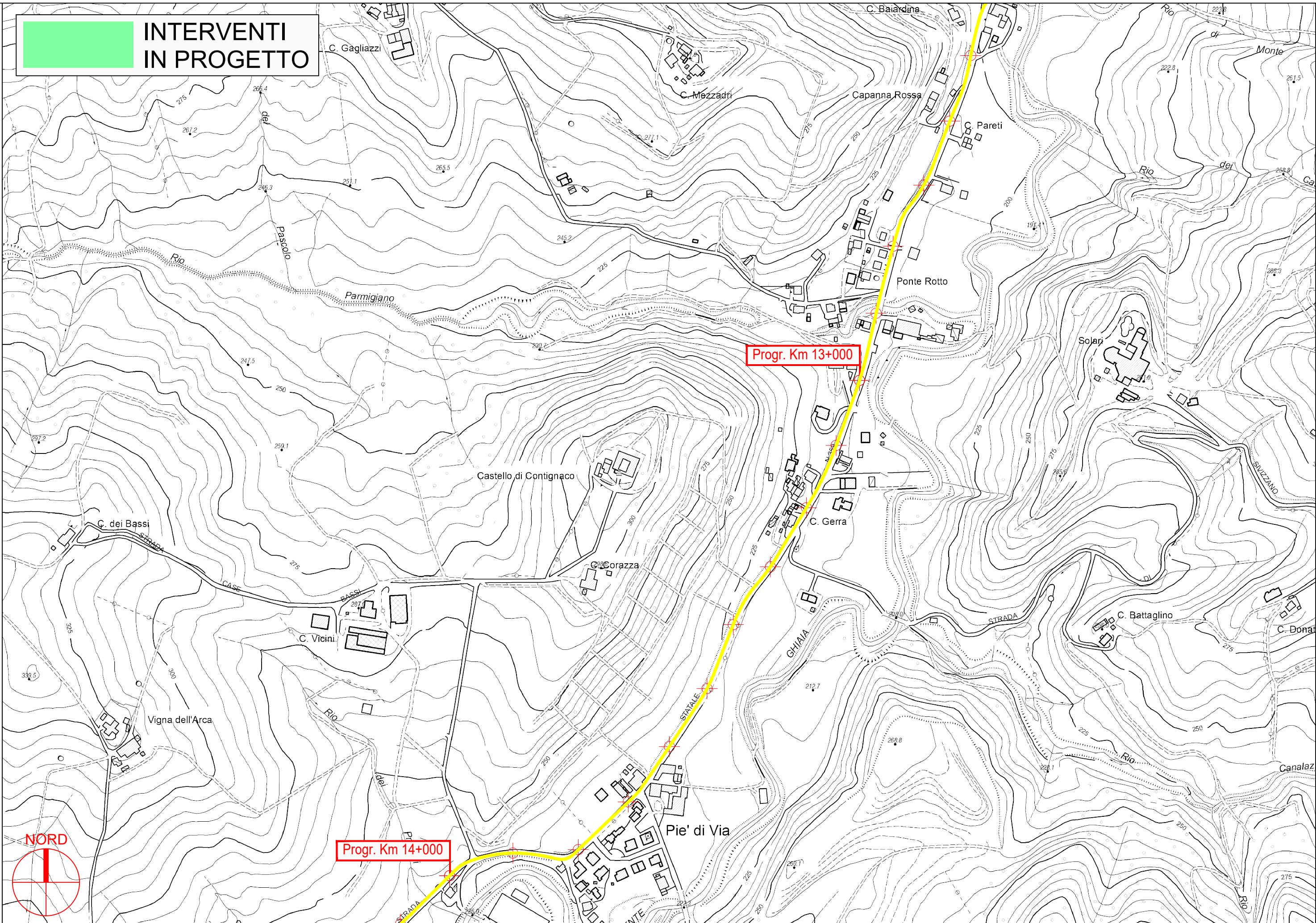


S.P. 359R di Salsomaggiore e Bardi - Sviluppo chilometrico 101+468 km

Tavola 5 di 51 - Scala 1 : 5.000



**INTERVENTI
IN PROGETTO**

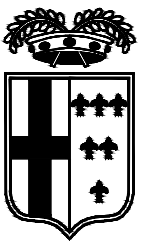


PROVINCIA DI PARMA



S.P. 359R di Salsomaggiore e Bardi - Sviluppo chilometrico 101+468 km

Tavola 6 di 51 - Scala 1 : 5.000



**INTERVENTI
IN PROGETTO**

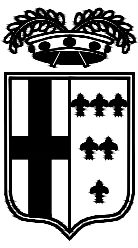
Progr. Km 14+000

Progr. Km 15+000

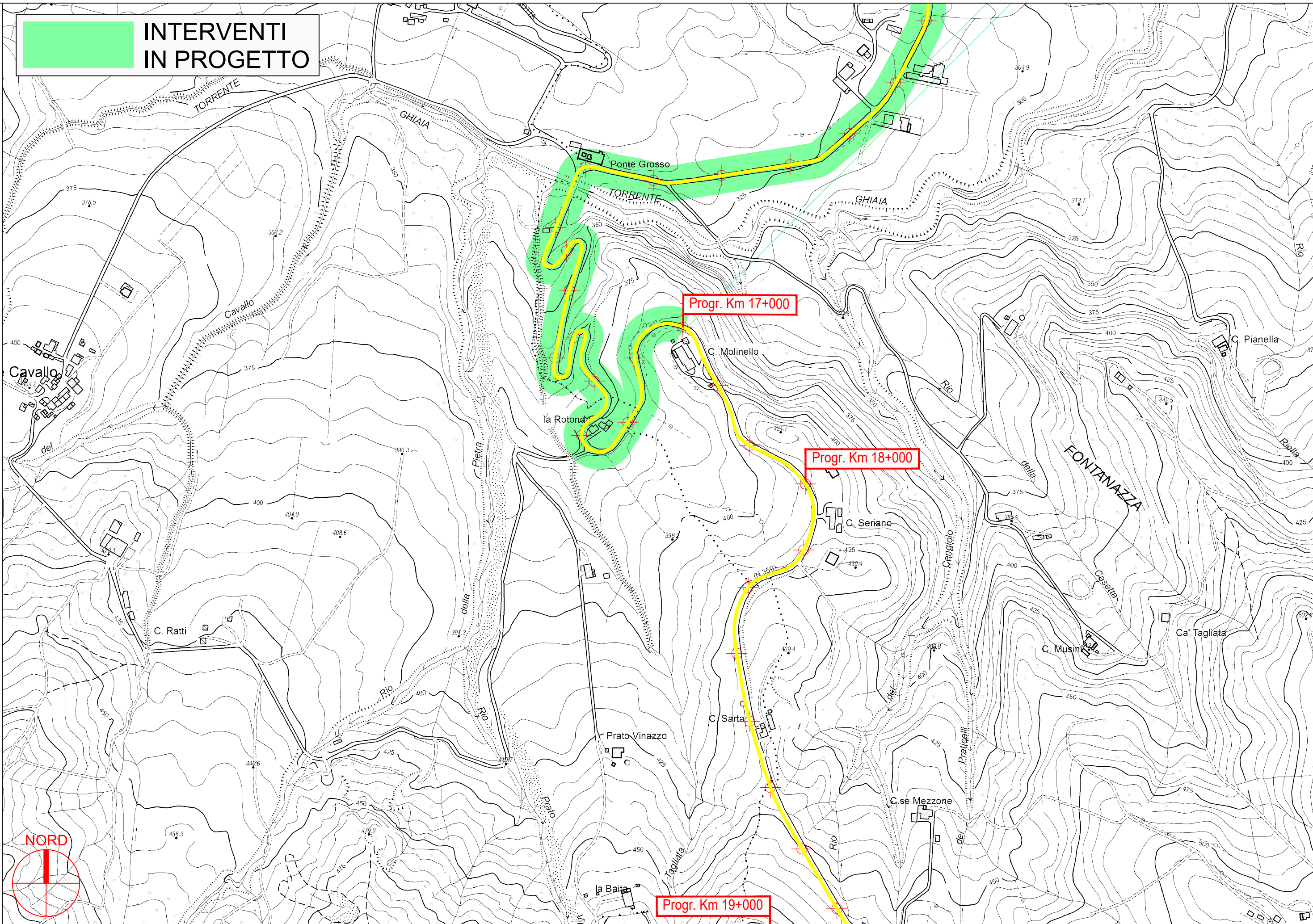
Km 16+000

PROVINCIA DI PARMA





**INTERVENTI
IN PROGETTO**



Progr. Km 17+000

Progr. Km 18+000

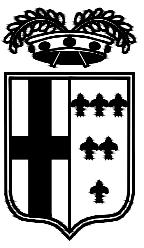
Progr. Km 19+000

PROVINCIA DI PARMA

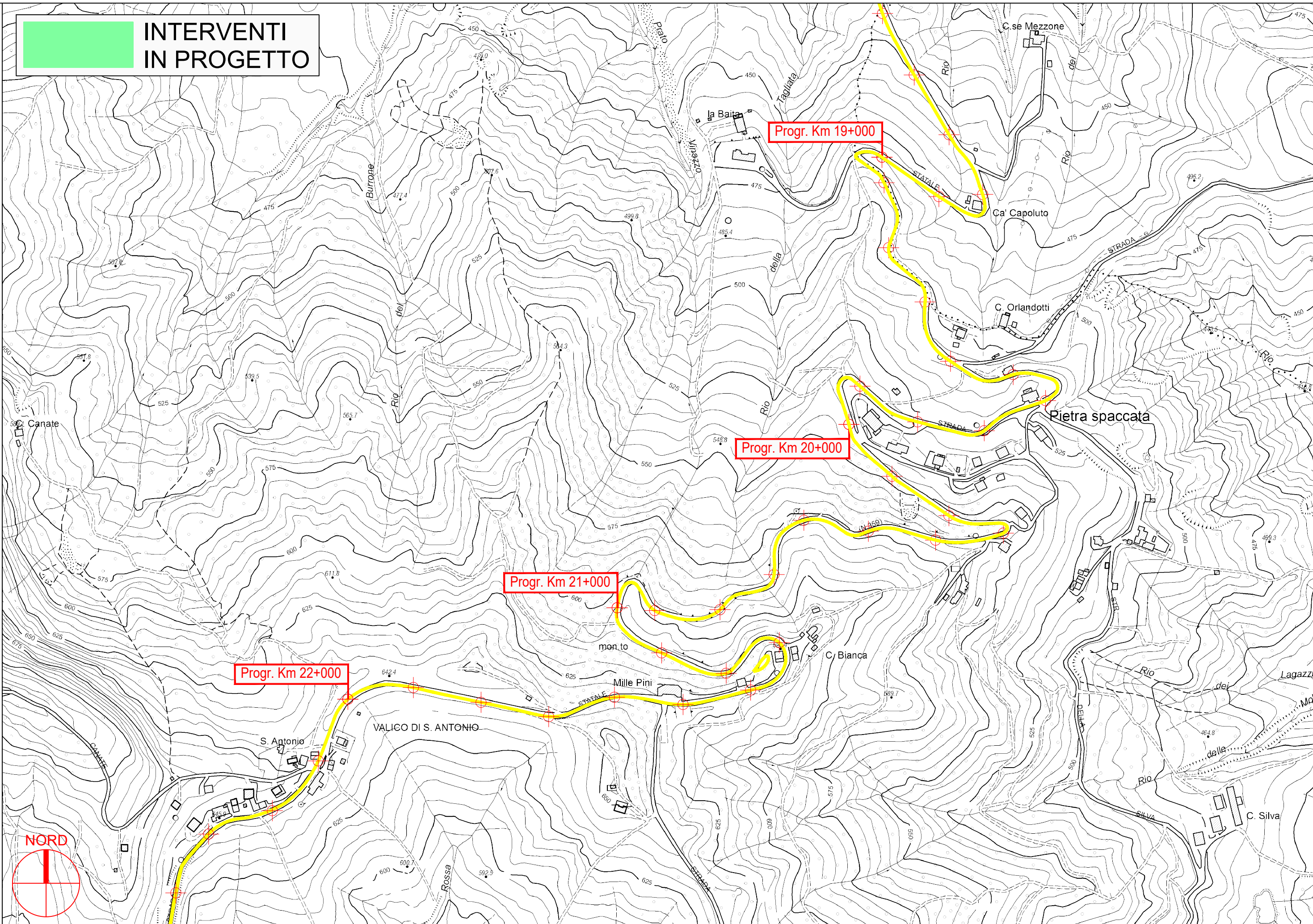


S.P. 359R di Salsomaggiore e Bardi - Sviluppo chilometrico 101+468 km

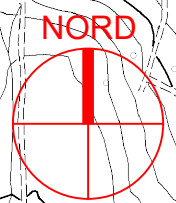
Tavola 8 di 51 - Scala 1 : 5.000

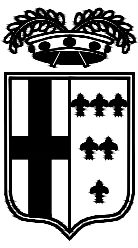


**INTERVENTI
IN PROGETTO**

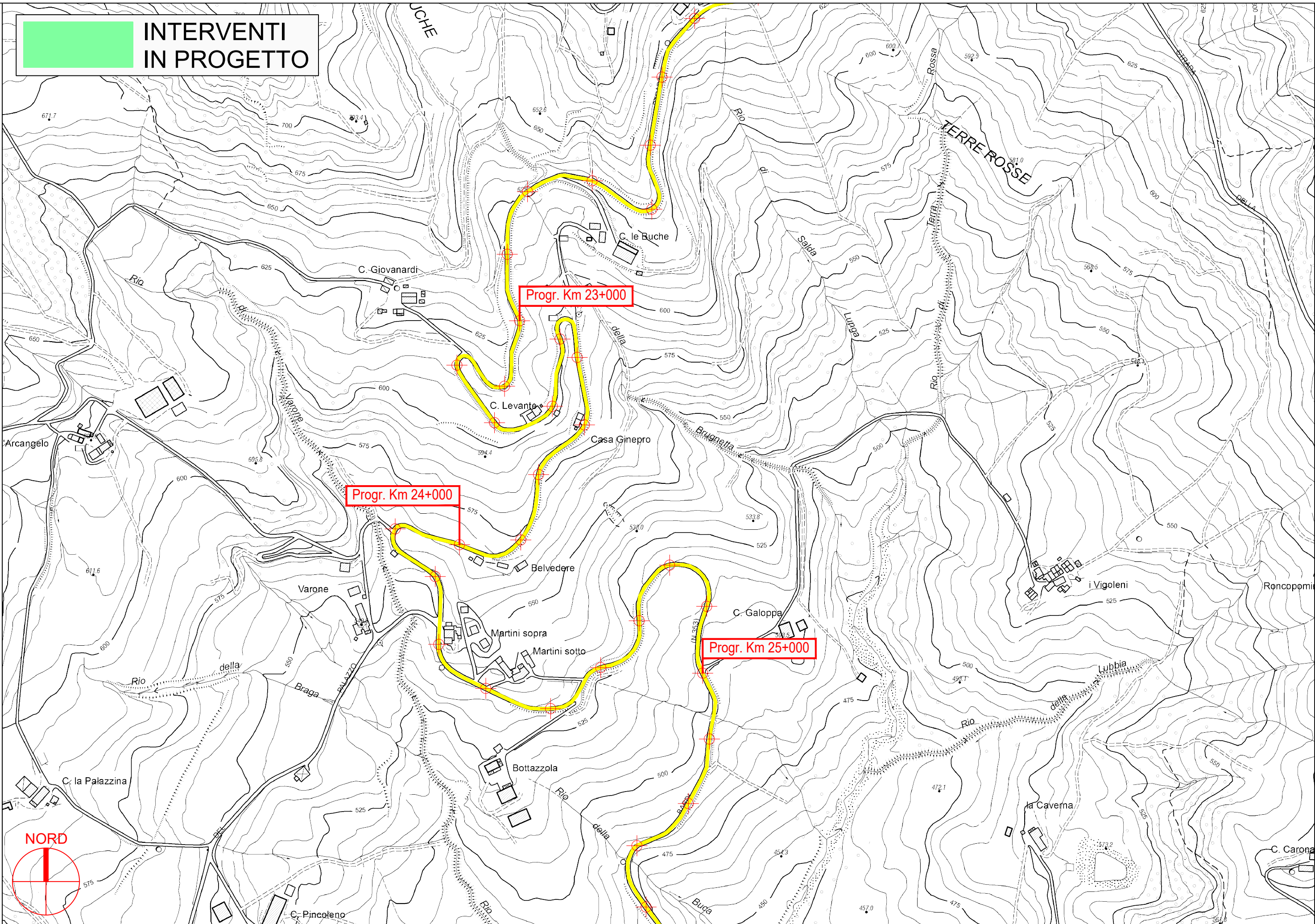


PROVINCIA DI PARMA





**INTERVENTI
IN PROGETTO**

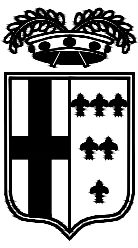


PROVINCIA DI PARMA

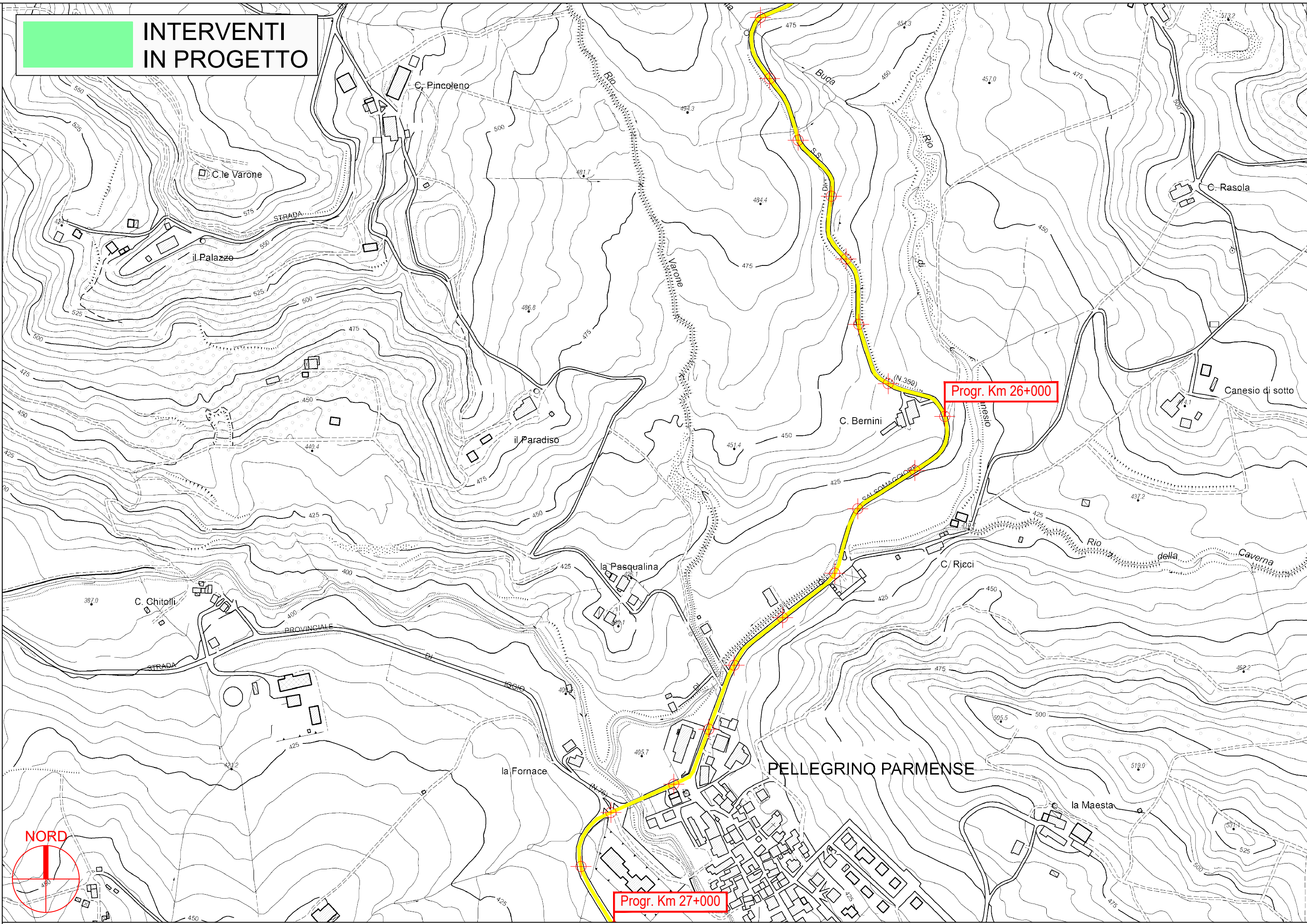


S.P. 359R di Salsomaggiore e Bardi - Sviluppo chilometrico 101+468 km

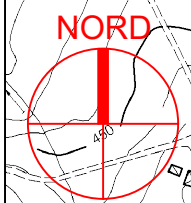
Tavola 10 di 51 - Scala 1 : 5.000

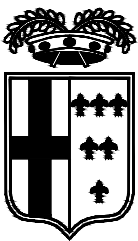


**INTERVENTI
IN PROGETTO**

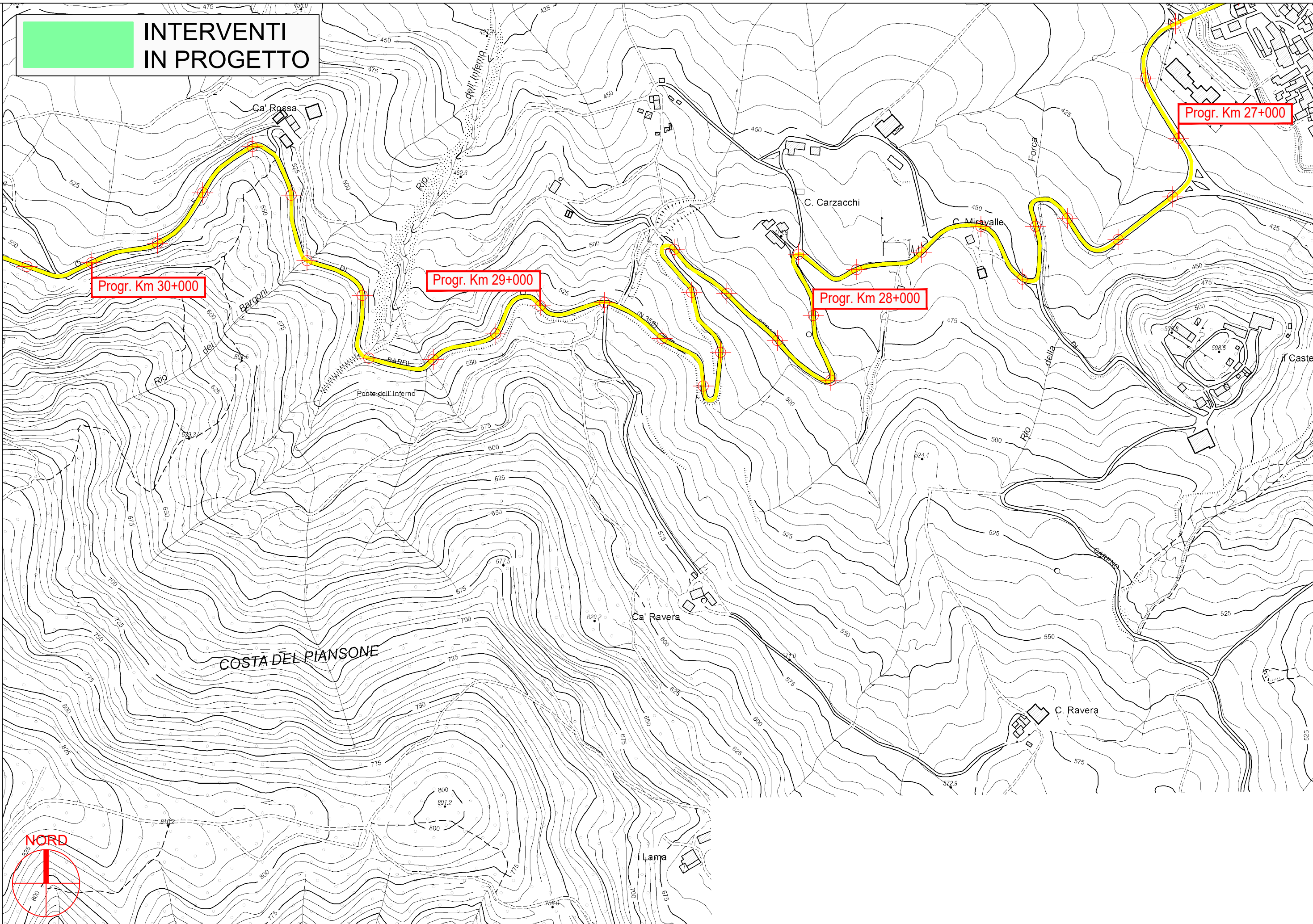


PROVINCIA DI PARMA

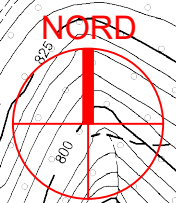




**INTERVENTI
IN PROGETTO**

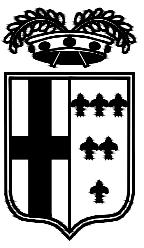


PROVINCIA DI PARMA

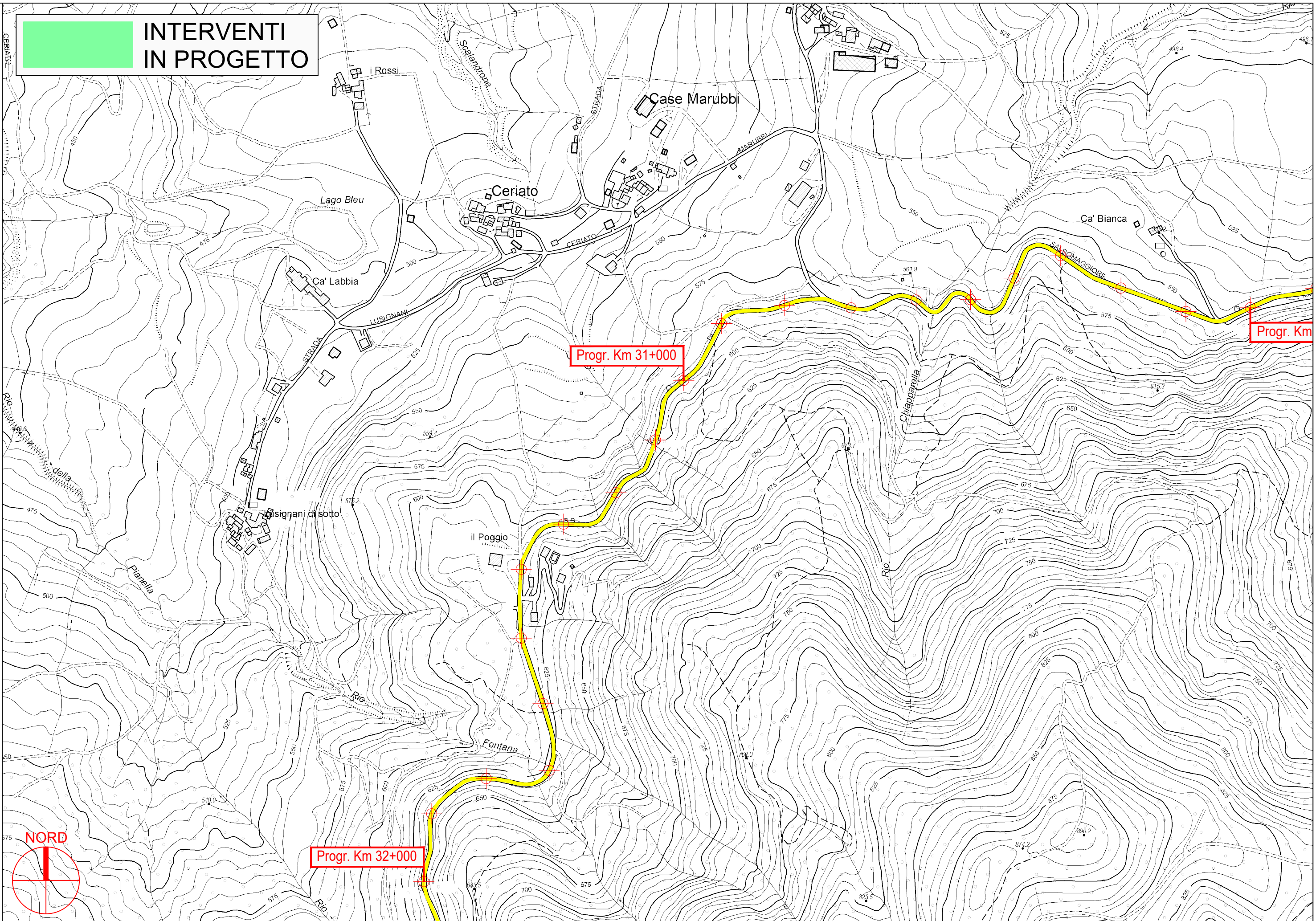


S.P. 359R di Salsomaggiore e Bardi - Sviluppo chilometrico 101+468 km

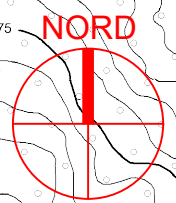
Tavola 12 di 51 - Scala 1 : 5.000

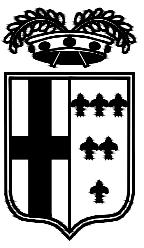


**INTERVENTI
IN PROGETTO**

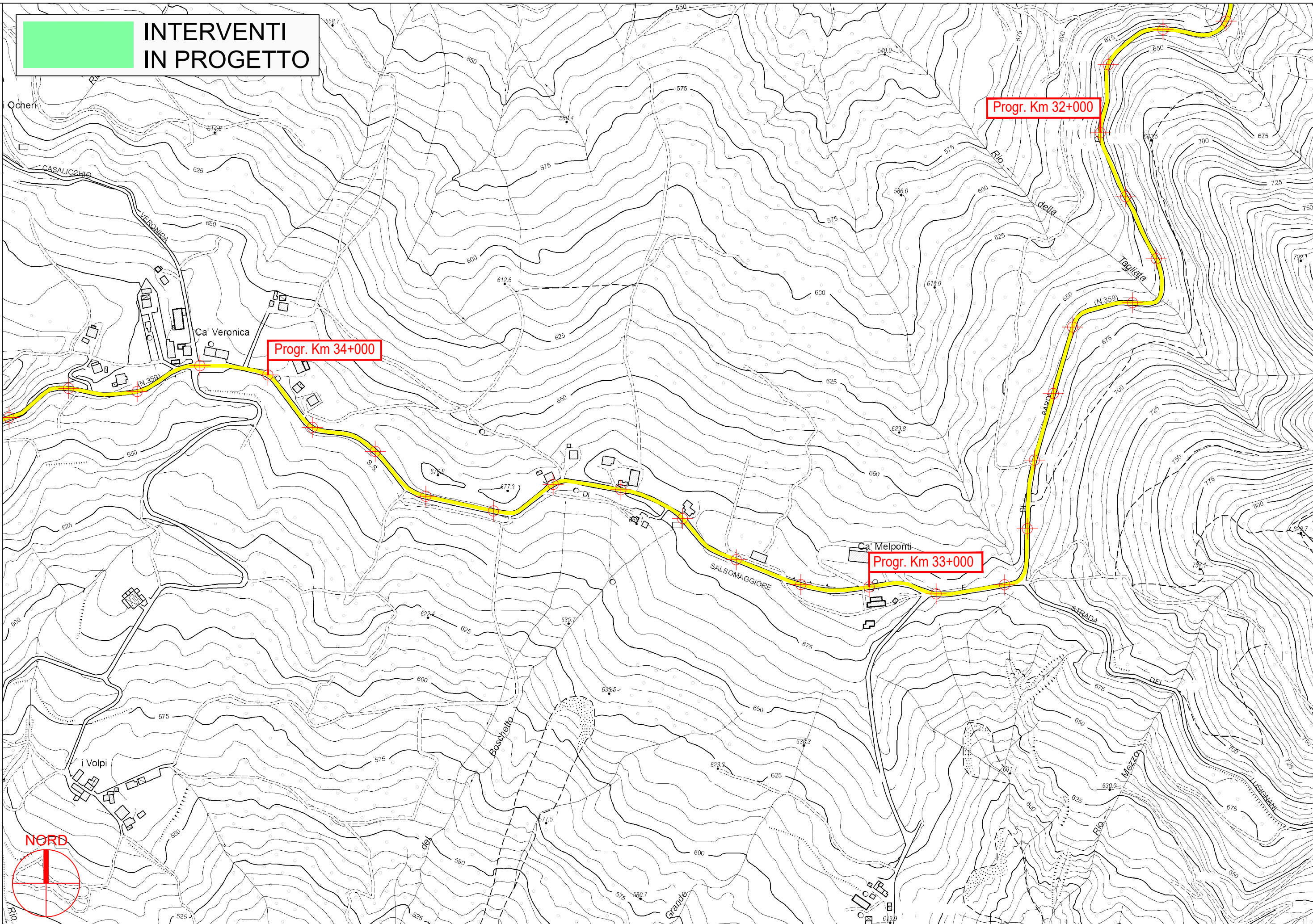


PROVINCIA DI PARMA

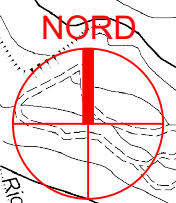


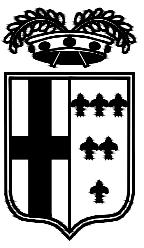


**INTERVENTI
IN PROGETTO**

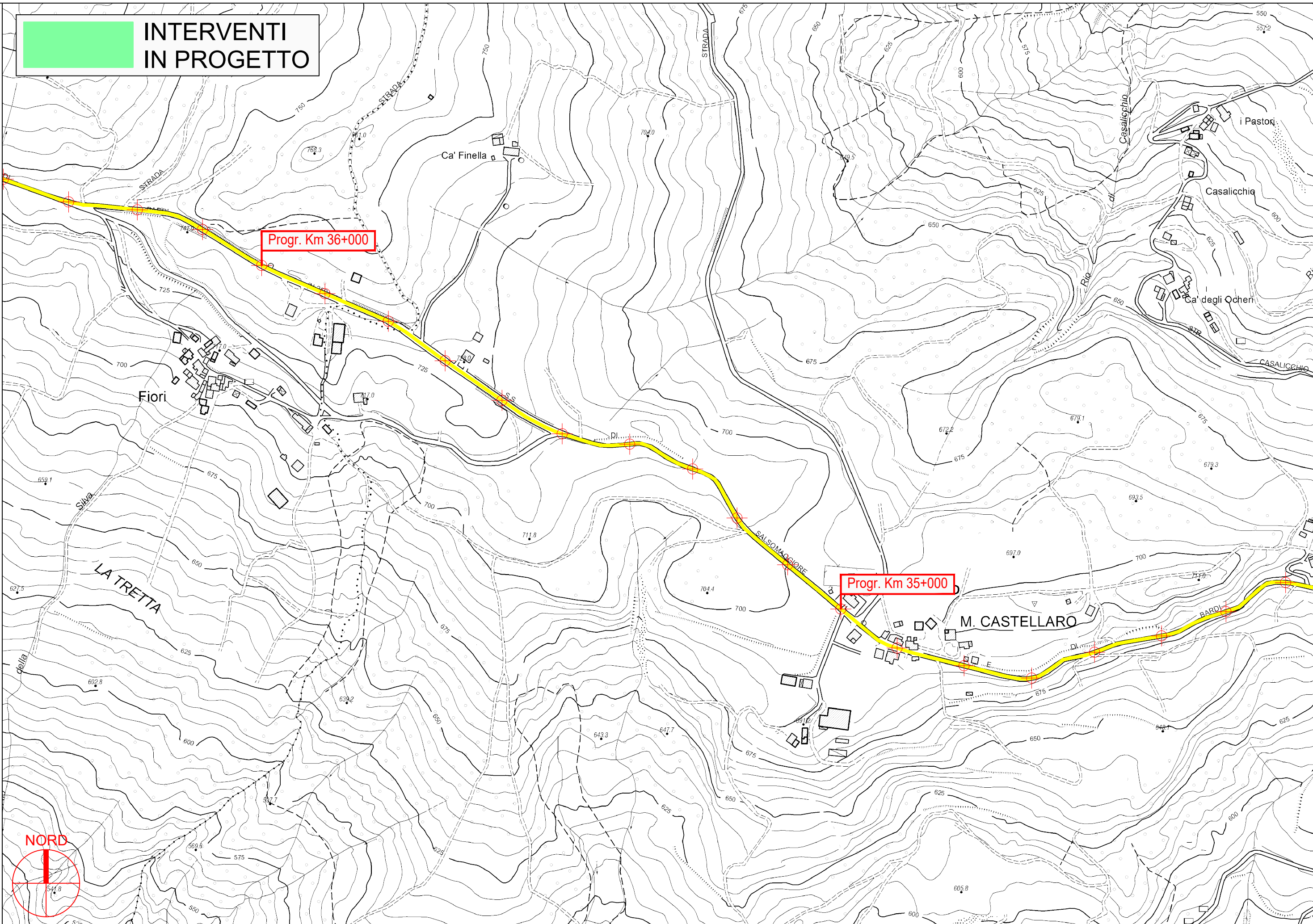


PROVINCIA DI PARMA

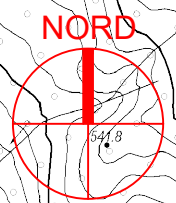




**INTERVENTI
IN PROGETTO**

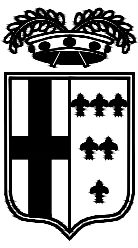


PROVINCIA DI PARMA

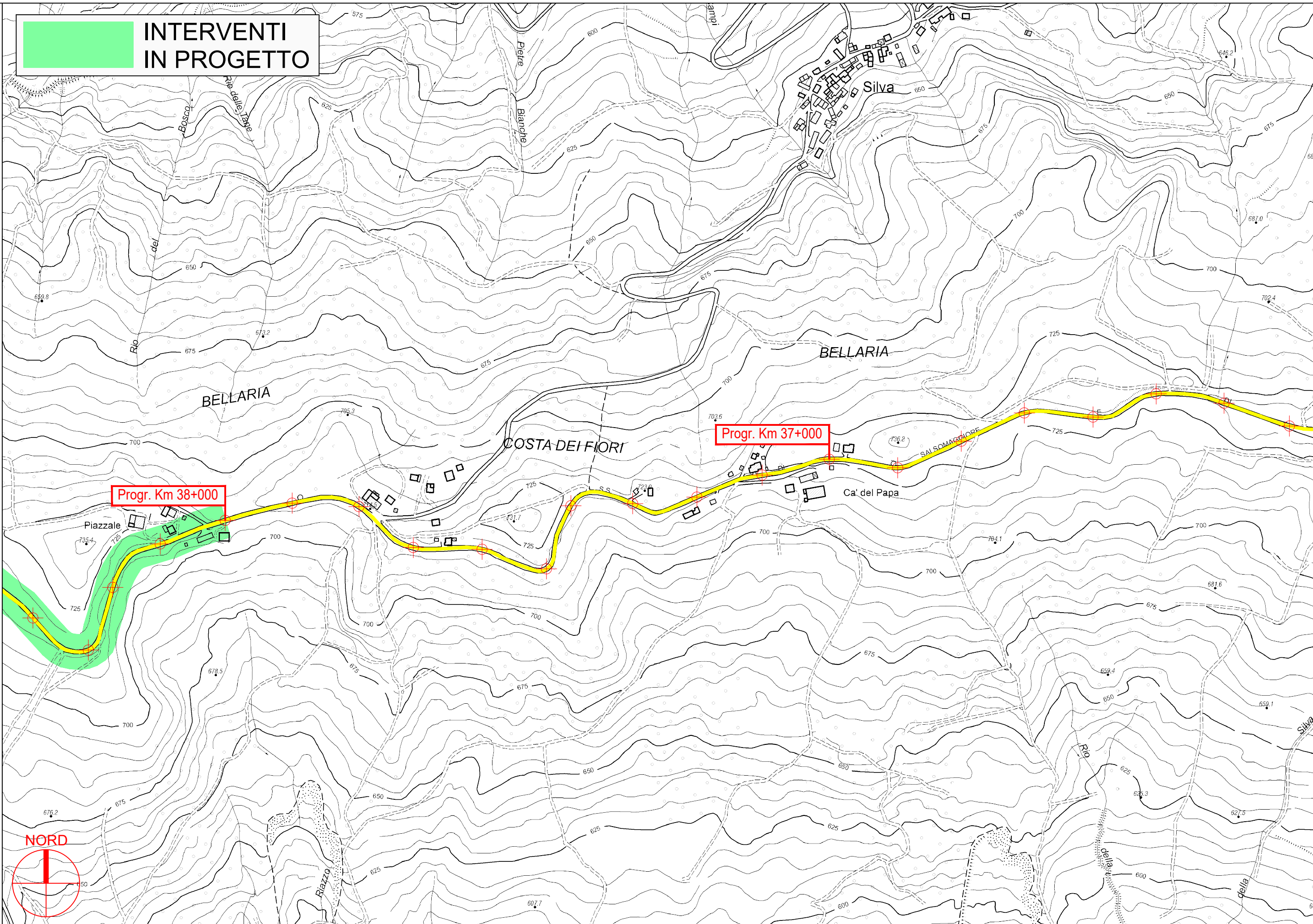


S.P. 359R di Salsomaggiore e Bardi - Sviluppo chilometrico 101+468 km

Tavola 15 di 51 - Scala 1 : 5.000



**INTERVENTI
IN PROGETTO**

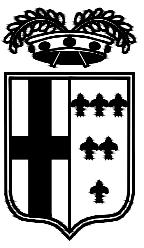


Progr. Km 38+000

Progr. Km 37+000



PROVINCIA DI PARMA



**INTERVENTI
IN PROGETTO**

m 41+000

Progr. Km 40+000

Progr. Km 39+000

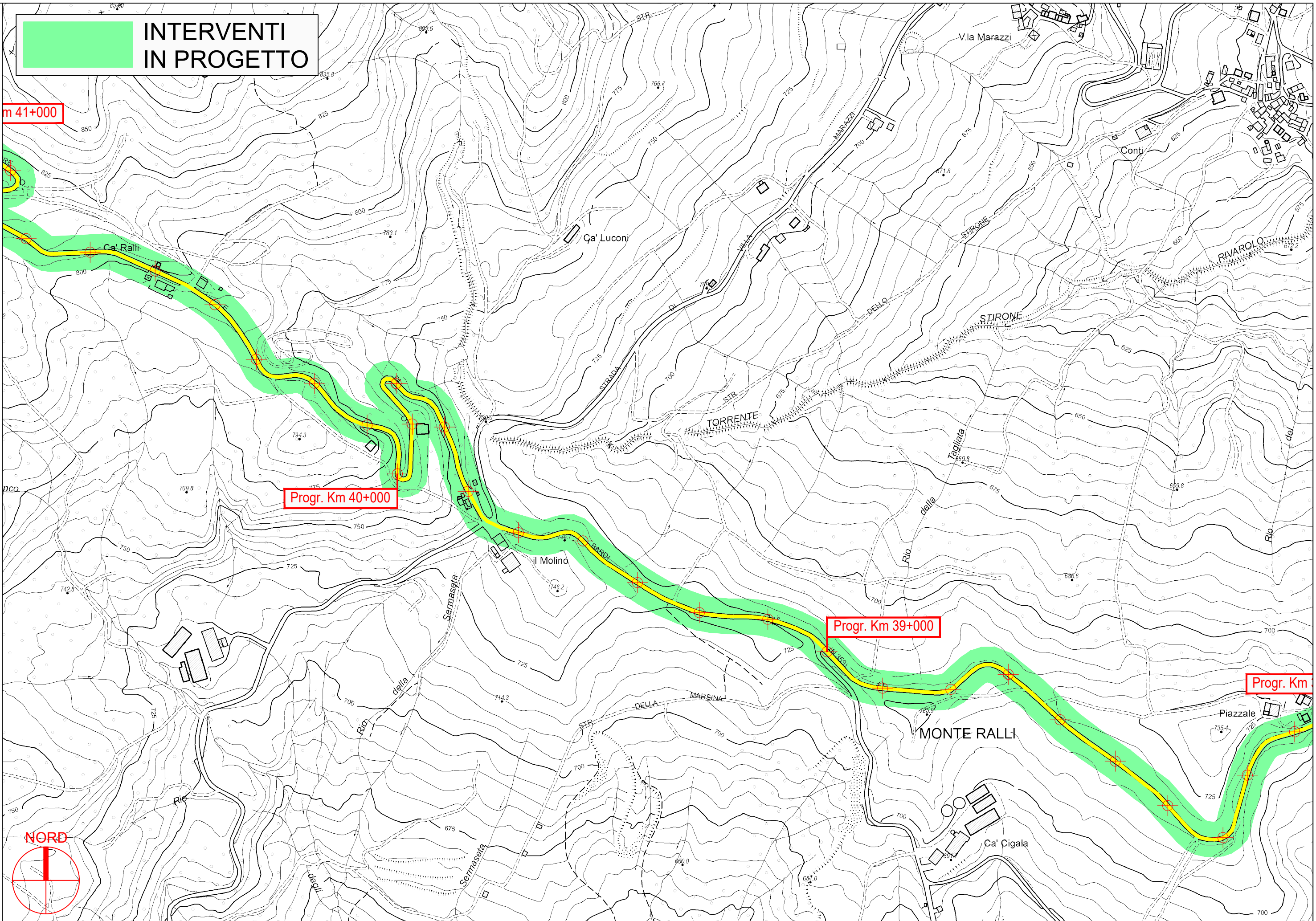
Progr. Km

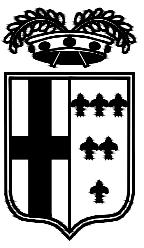
PROVINCIA DI PARMA



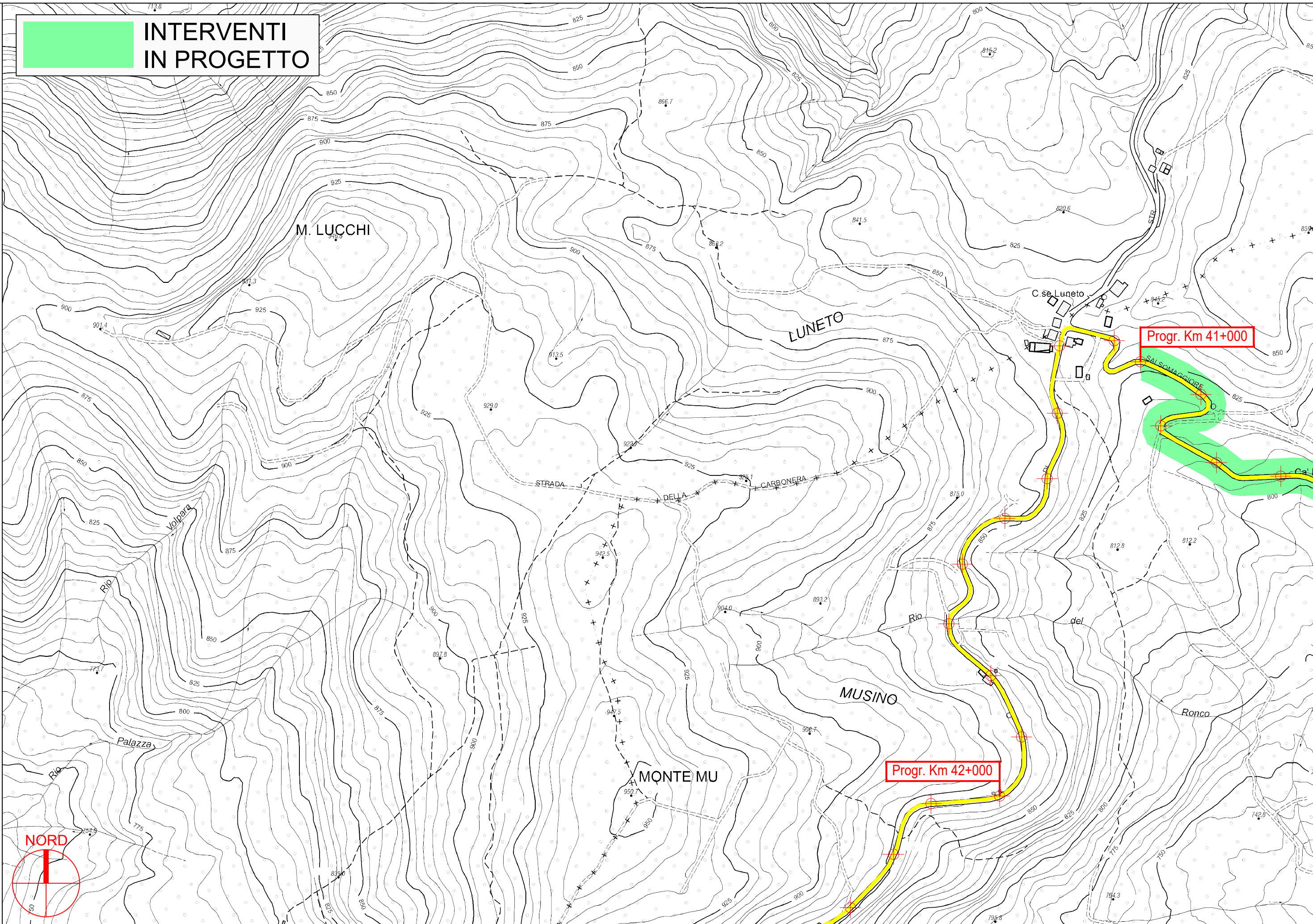
S.P. 359R di Salsomaggiore e Bardi - Sviluppo chilometrico 101+468 km

Tavola 17 di 51 - Scala 1 : 5.000





**INTERVENTI
IN PROGETTO**



PROVINCIA DI PARMA

S.P. 359R di Salsomaggiore e Bardi - Sviluppo chilometrico 101+468 km

Tavola 18 di 51 - Scala 1 : 5.000