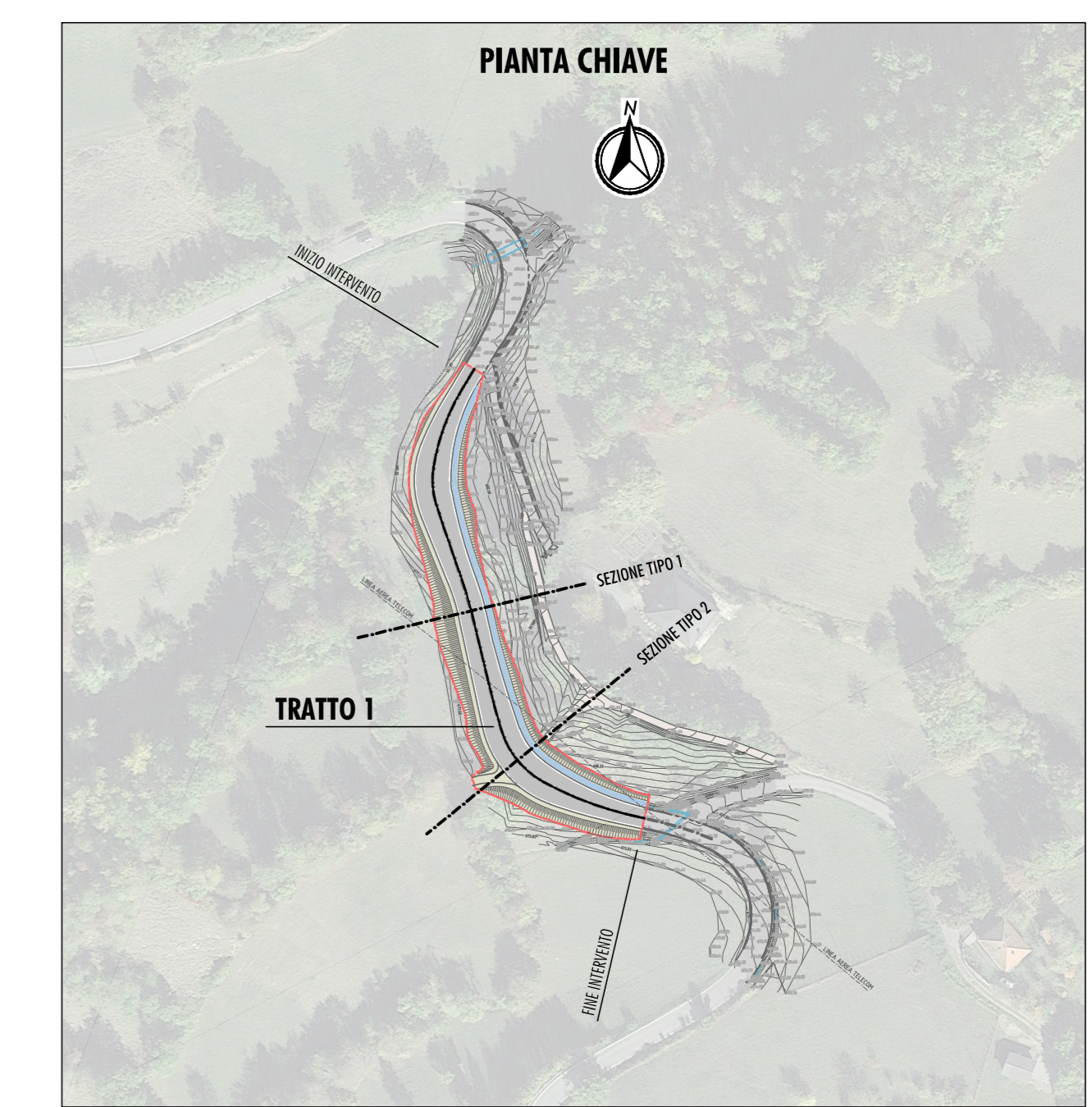
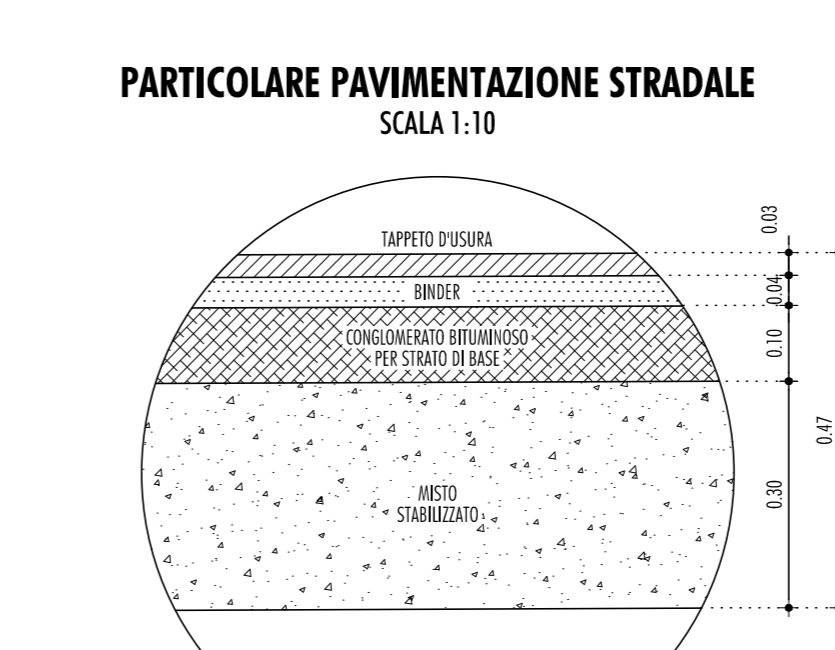
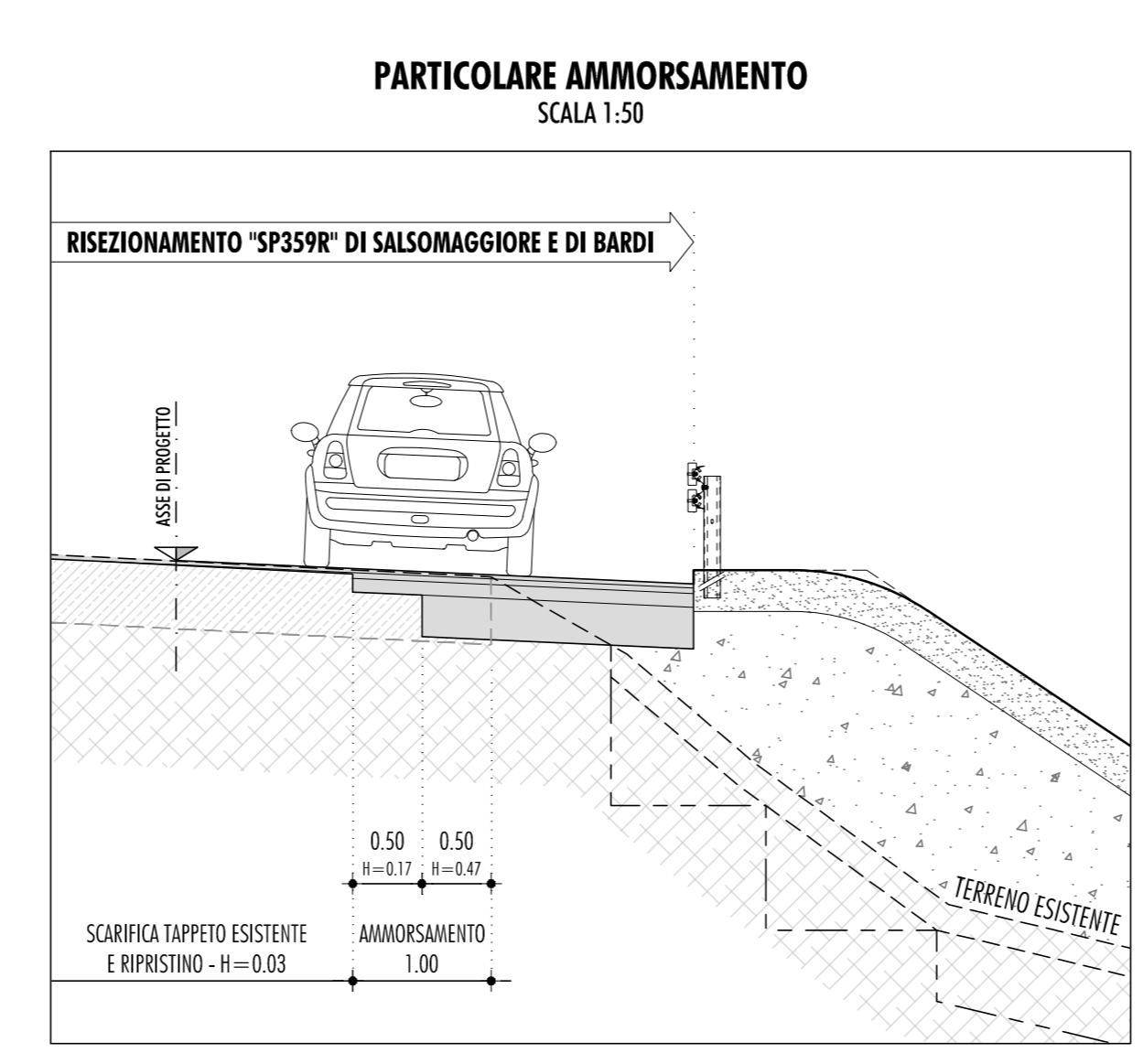
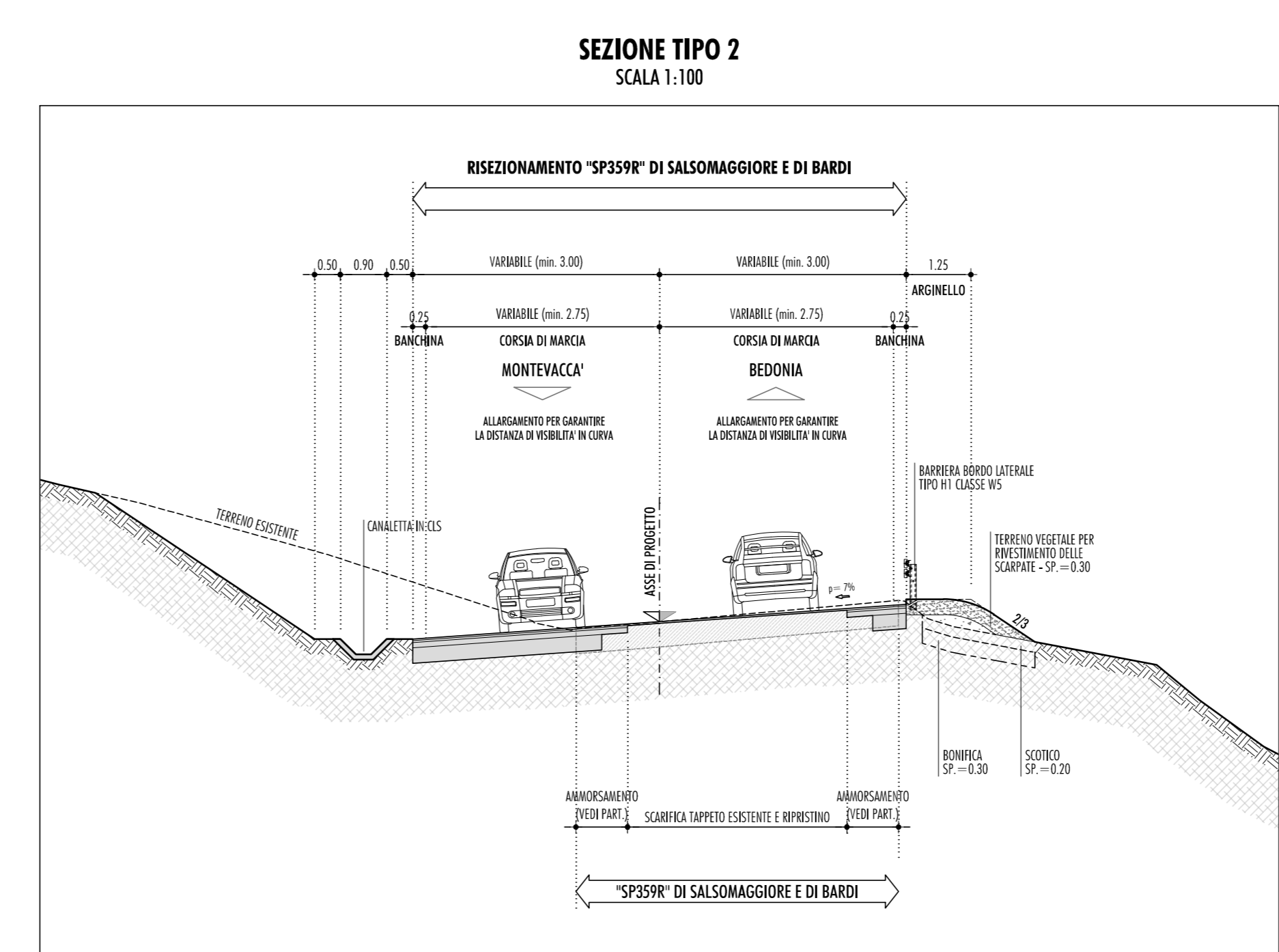
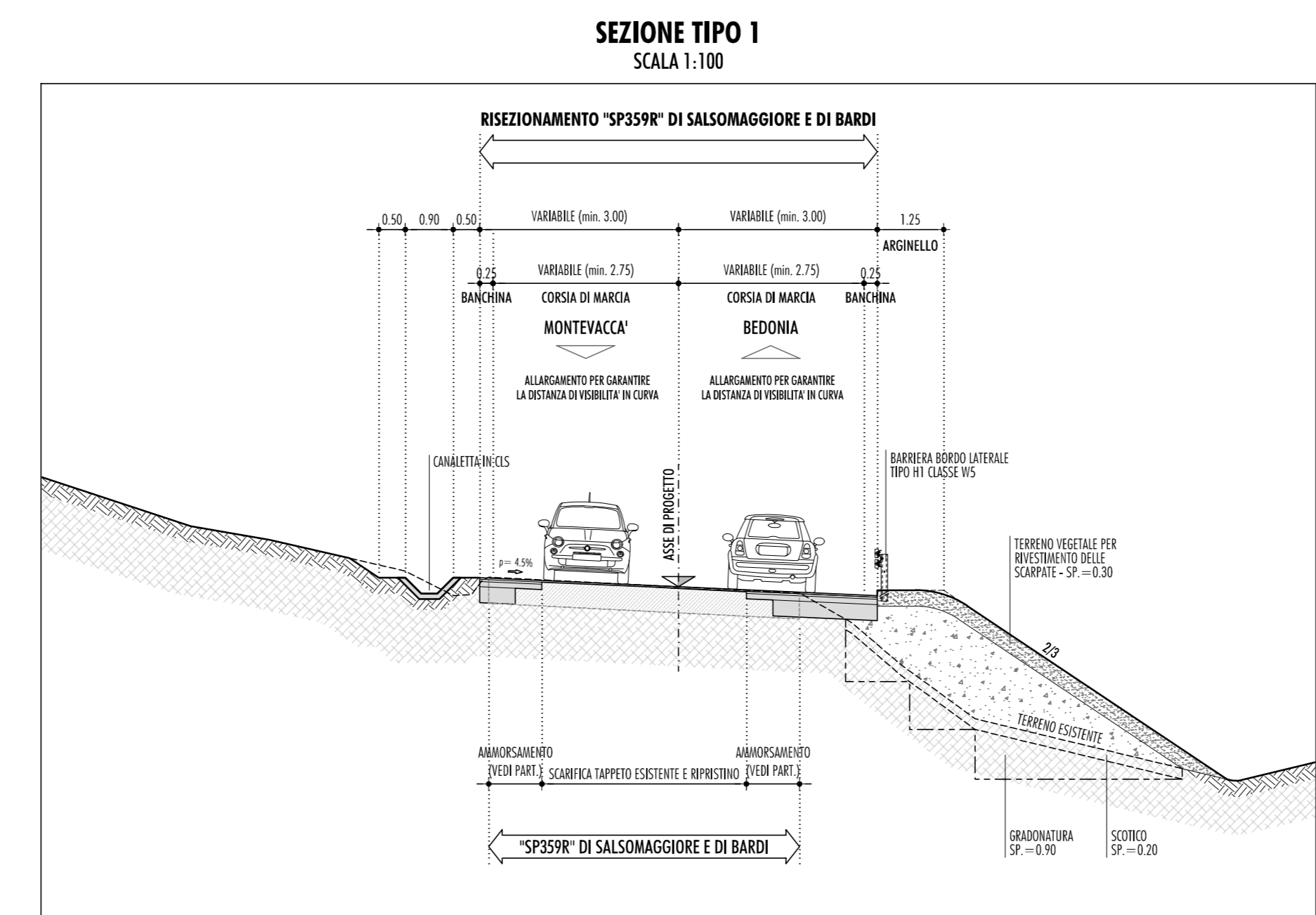


SEZIONI	670.00																									
	0	1	2	3	4	5	6	7	8	9	10	11	12	13	14	15	16	17	18	19	20	21	22	23	24	
DISTANZE	PARZIALI	6.54	11.27	11.27	4.87	4.86	3.71	7.30	3.38	4.23	5.14	3.97	9.39	10.43	6.72	6.72	9.03	9.03	6.17	6.33	12.52	4.08	4.76	7.05	7.05	
	PROGRESSIVE	0.00	6.54	17.81	22.68	27.54	31.35	38.65	45.95	49.33	53.56	58.70	63.67	73.06	83.49	90.21	99.24	108.27	117.30	126.33	138.85	151.37	155.45	162.50	169.55	176.60
ETOMETRICHE	TERRENO	681.32	681.16	680.93	680.70	680.55	680.43	680.34	680.27	680.20	680.16	680.02	679.87	679.54	679.28	679.01	678.86	678.42	678.18	678.01	677.49	677.30	677.14	676.85	676.59	676.30
	PROGETTO	681.32	681.16	680.93	680.70	680.55	680.43	680.34	680.27	680.20	680.16	680.02	679.87	679.54	679.28	679.01	678.86	678.42	678.18	678.01	677.49	677.30	677.14	676.85	676.59	676.30
	DIFFERENZE	0.00	0.00	0.00	0.00	-0.01	0.01	-0.00	0.00	-0.00	0.00	-0.01	0.00	0.00	-0.00	-0.00	-0.00	-0.00	-0.00	-0.00	0.00	0.00	0.00	0.00	0.00	0.00
ANDAMENTO PLANIMETRICO	TK1	6.54	17.81	29.08	33.95	38.81	41.52	44.23	51.53	55.70	60.03	63.08	66.04	69.01	76.40	83.83	91.26	98.69	106.12	113.55	120.98	128.41	135.84	143.27	150.70	
	TK2	13.08	31.62	48.49	58.90	68.31	76.04	81.47	87.00	92.70	98.53	104.40	110.31	116.26	122.25	128.28	134.35	140.46	146.61	152.80	159.03	165.30	171.61	177.96	184.35	




 S.P. 359R DI SALSOMAGGIORE E BARDI - RIQUALIFICA FUNZIONALE E MIGLIORAMENTO DEL TRATTO STRADALE TRA BEDONIA E LOC. MONTEVACCA
 INTERVENTI INDIVIDUATI TRA IL KM 88+000 ED IL KM 90+000
 PROVINCIA DI PARMA

INTERVENTI PUNTUALI DI MESSA IN SICUREZZA DELLA CARREGGIATA STRADALE ALLE PROGRESSIVE MEDIE KM 88+000, KM 88+760 E KM 88+930
 CUP D33D19000120003

PROGETTO DEFINITIVO

IL RESPONSABILE DEL PROCEDIMENTO ARCH. GLORIA RESTEGHINI

RESPONSABILE DEL SERVIZIO VIABILITÀ E INFRASTRUTTURE ING. GIANPAOLO MONTEVERDI

PROGETTISTI
 ING. FILIPPO VIARO
 ARCH. SERGIO BECCARELLI
 ING. PAOLO CORCHIA



DESCRIZIONE: PROGETTO STRADALE INTERVENTO ALLA PROGRESSIVA MEDIA KM 88+000
 PROFILO LONGITUDINALE DI PROGETTO E SEZIONI TIPO
 TAV. N°: PD.03.02.05

SCALE: VARIE
 REVISIONE: DATA: OGGETTO: MARZO 2020